

\*Fixings with an asterisk are required on sheet ends and end laps only.

**ELITE SYSTEMS**



www.euroclad.com  
Tel: +44 (0)2922 010 101  
Fax: +44 (0)2922 010 122

TITLE: Elite System 52  
DWG NO: E52  
DRAWN: CD  
CHECK: MP  
DATE: Jan 2020  
SCALE: NTS

This draft drawing has been supplied by Euroclad Group Ltd for the purpose of guidance free of charge. It is a suggested typical detail and as such should not be assumed suitable for any specific project or application. No responsibility is assumed for errors or misinterpretations resulting from the information contained in the drawing. Details are for illustration only and no liability is accepted. We reserve the right to change the details without notice. The drawing is copyright, it remains our property.

To be read in conjunction with Elite System specification documents

Elite System 52				
Bracket Height	Insulation Thickness	Insulation Value	Overall System Depth	U Value at 1.8M Centres
120mm	120mm	0.040	152mm	0.35
140mm	140mm	0.040	172mm	0.30
150mm	150mm*/160mm	0.040	182mm	0.28
160mm	160mm	0.040	192mm	0.26
170mm	180mm	0.040	202mm	0.25
180mm	180mm	0.040	212mm	0.24
200mm	200mm	0.040	232mm	0.21
220mm	220mm	0.040	252mm	0.19
240mm	240mm	0.040	272mm	0.18
260mm	260mm	0.040	292mm	0.17
280mm	280mm	0.040	312mm	0.15
300mm	300mm	0.040	332mm	0.14
320mm	320mm	0.040	352mm	0.13

\* Only available in Rockwool Cladding Roll

**Please Note:**  
System is fire rated using Knauf Factoryclad 40 ECOSE insulation of minimum thickness 80mm with steel outer sheet only.  
Ensure roll edges are lapped/butted to ensure no gaps.  
Fire Resistance performance 120 minutes Integrity, 15 minutes (min) Insulation.  
Meets the requirements of Building Regulations Part B for external walls where fire attack is from inside the building and the wall is 1M or more from the boundary.  
System can be fire rated using Rockwool insulation of minimum thickness 120mm with steel outer sheet only, with liner stitched at 300mm centres.  
Ensure roll edges are lapped/butted to ensure no gaps. Refer to Fr30 specification.  
Fire Resistance performance 120 minutes Integrity, 30 minutes (min) Insulation.

**Please Note:**

System is fire rated using Knauf Factoryclad 40 ECOSE insulation of minimum thickness 80mm with steel outer sheet only.

Ensure roll edges are lapped/buttet to ensure no gaps.

Fire Resistance performance 120 minutes Integrity, 15 minutes (min) Insulation.

Meets the requirements of Building Regulations Part B for external walls where fire attack is from inside the building and the wall is 1M or more from the boundary.

System can be fire rated using Rockwool insulation of minimum thickness 120mm with steel outer sheet only, with liner stitched at 300mm centres.

Ensure roll edges are lapped/buttet to ensure no gaps. Refer to Fr30 specification.

Fire Resistance performance 120 minutes Integrity, 30 minutes (min) Insulation.

**ELITE SYSTEM 52 SIDE LAP DETAIL**

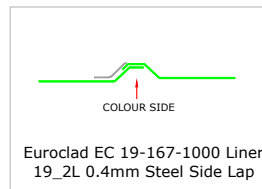
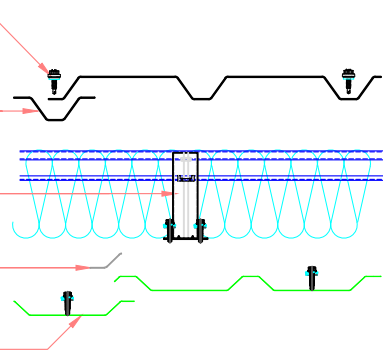
On intermediate supports fixing at each profile side lap and subsequently in alternate troughs. Fix all troughs at sheet ends & end laps

EC 32-200-1000 Wall MW5\_4Rev  
0.5mm steel

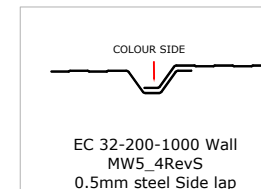
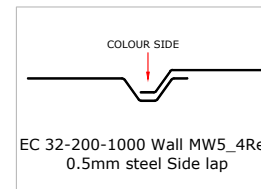
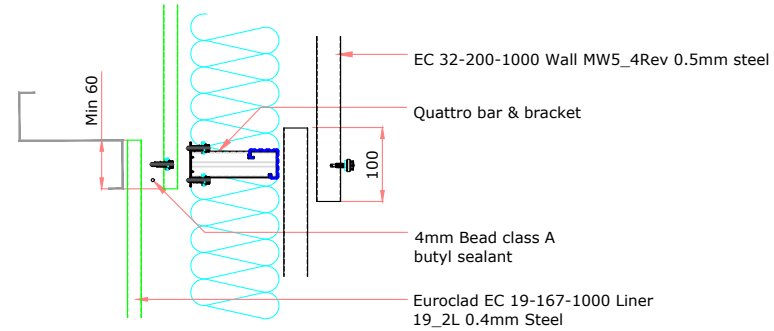
Quattro bar & bracket to required depth typically @ 1.167m centres

50mm x 1mm butyl sealing tape

Euroclad EC 19-167-1000 Liner  
19\_2L 0.4mm Steel



**ELITE SYSTEM 52 END LAP DETAIL**



**ELITE SYSTEMS**



www.euroclad.com  
Tel: +44 (0)2922 010 101  
Fax: +44 (0)2922 010 122

TITLE: Elite System 52

DWG NO: E52

DRAWN: CD

CHECK: MP

DATE: Jan 2020

SCALE: NTS

This draft drawing has been supplied by Euroclad Group Ltd for the purpose of guidance free of charge. It is a suggested typical detail and as such should not be assumed suitable for any specific project or application. No responsibility is assumed for errors or misinterpretations resulting from the information contained in the drawing. Details are for illustration only and no liability is accepted. We reserve the right to change the details without notice. The drawing is copyright, it remains our property.

To be read in conjunction with Elite System specification documents

TITLE: Elite System 52

DWG NO: E52

DRAWN: CD

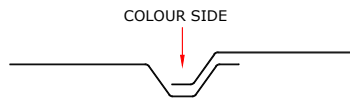
CHECK: MP

DATE: Jan 2020

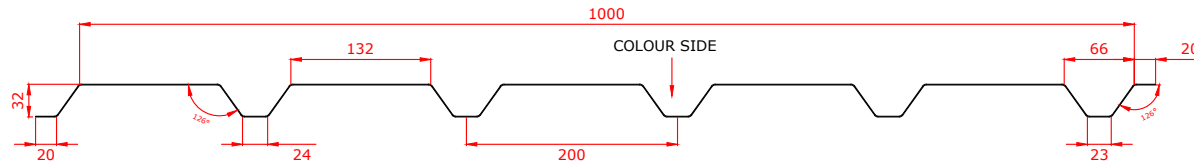
SCALE: NTS

This draft drawing has been supplied by Euroclad Group Ltd for the purpose of guidance free of charge. It is a suggested typical detail and as such should not be assumed suitable for any specific project or application. No responsibility is assumed for errors or misinterpretations resulting from the information contained in the drawing. Details are for illustration only and no liability is accepted. We reserve the right to change the details without notice. The drawing is copyright, it remains our property.

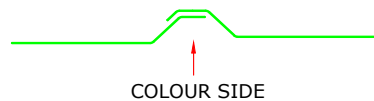
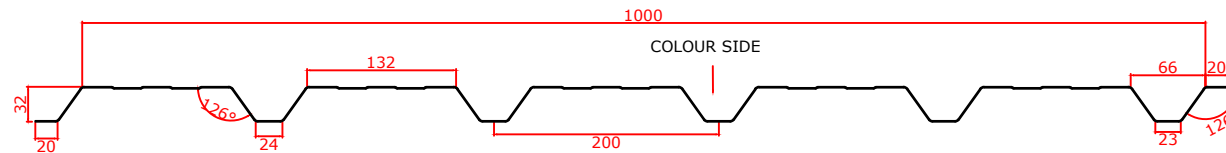
To be read in conjunction with Elite System specification documents



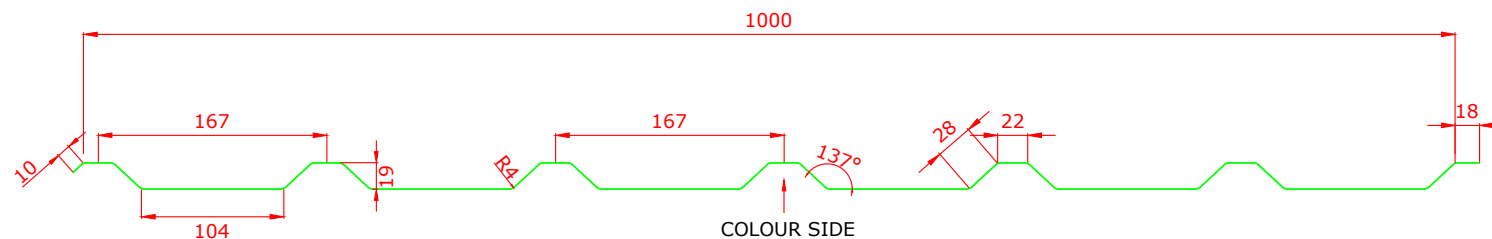
**EUROCLAD EC 32-200-1000 Wall MW5\_4Rev  
0.5mm steel EXTERNAL SHEET**

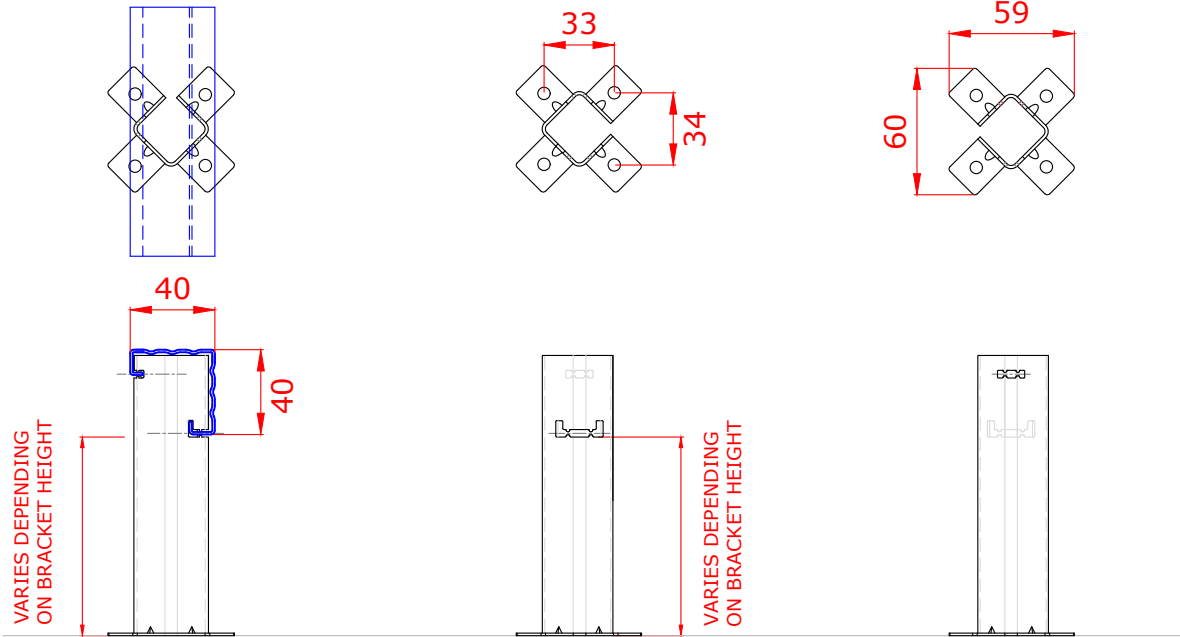
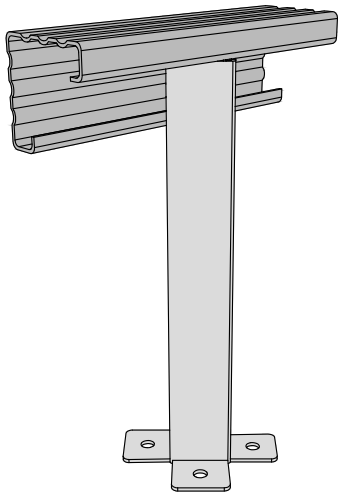


**EUROCLAD EC 32-200-1000 Wall MW5\_4RevS  
0.5mm steel EXTERNAL SHEET**



**EUROCLAD EC 19-167-1000 Liner 19\_2L 0.4mm  
Steel LINER**





**ELITE SYSTEMS**

**EUROCLAD**

www.euroclad.com  
Tel: +44 (0)2922 010 101  
Fax: +44 (0)2922 010 122

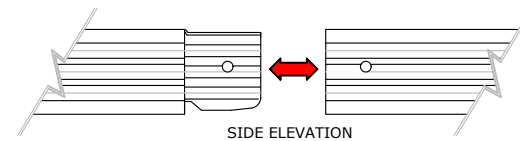
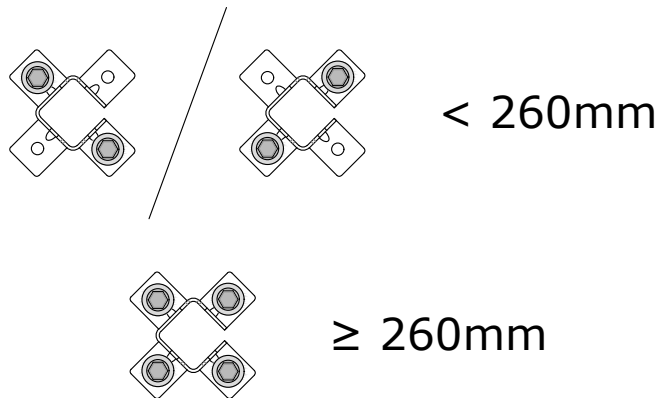
TITLE: Elite System 52  
DWG NO: E52  
DRAWN: CD  
CHECK: MP  
DATE: Jan 2020  
SCALE: NTS

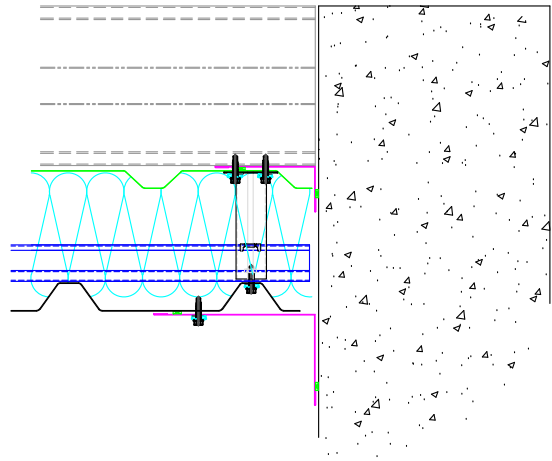
This draft drawing has been supplied by Euroclad Group Ltd for the purpose of guidance free of charge. It is a suggested typical detail and as such should not be assumed suitable for any specific project or application. No responsibility is assumed for errors or misinterpretations resulting from the information contained in the drawing. Details are for illustration only and no liability is accepted. We reserve the right to change the details without notice. The drawing is copyright, it remains our property.

To be read in conjunction with Elite System specification documents

Brackets less than 260mm require 2 fixings diagonally opposite.  
Brackets 260mm or more require 4 fixings.

Maximum bar cantilever at free ends is 300mm.  
Spigot can fall anywhere between two brackets.





**ELITE SYSTEMS**



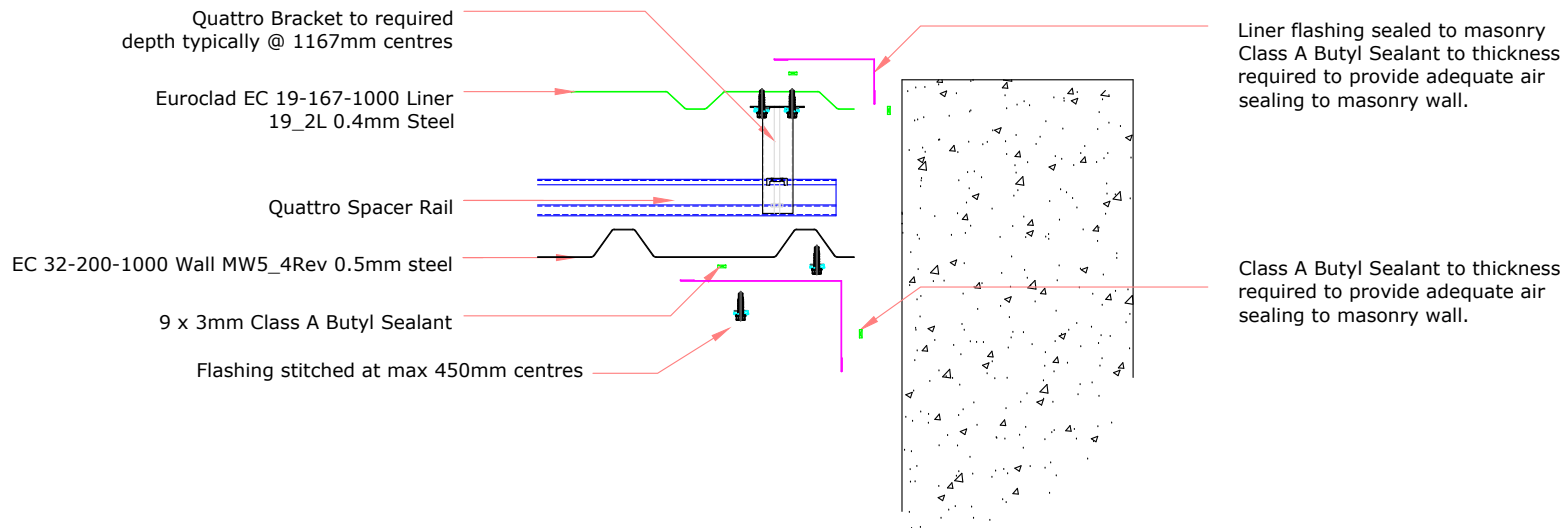
www.euroclad.com  
 Tel: +44 (0)2922 010 101  
 Fax: +44 (0)2922 010 122

TITLE: Elite System 52  
 DWG NO: E52  
 DRAWN: CD  
 CHECK: MP  
 DATE: Jan 2020  
 SCALE: NTS

This draft drawing has been supplied by Euroclad Group Ltd for the purpose of guidance free of charge. It is a suggested typical detail and as such should not be assumed suitable for any specific project or application. No responsibility is assumed for errors or misinterpretations resulting from the information contained in the drawing. Details are for illustration only and no liability is accepted. We reserve the right to change the details without notice. The drawing is copyright, it remains our property.

To be read in conjunction with Elite System specification documents

**EUROCLAD ELITE SYSTEM 52 WALL CONSTRUCTION**



Insulation excluded for clarity  
 A range of mineral & glass wool insulations are available for different requirements

**ELITE SYSTEMS**

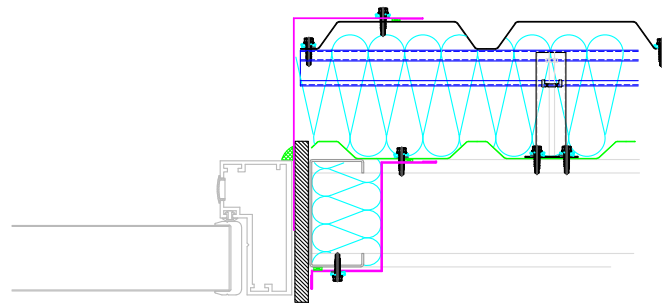


www.euroclad.com  
Tel: +44 (0)2922 010 101  
Fax: +44 (0)2922 010 122

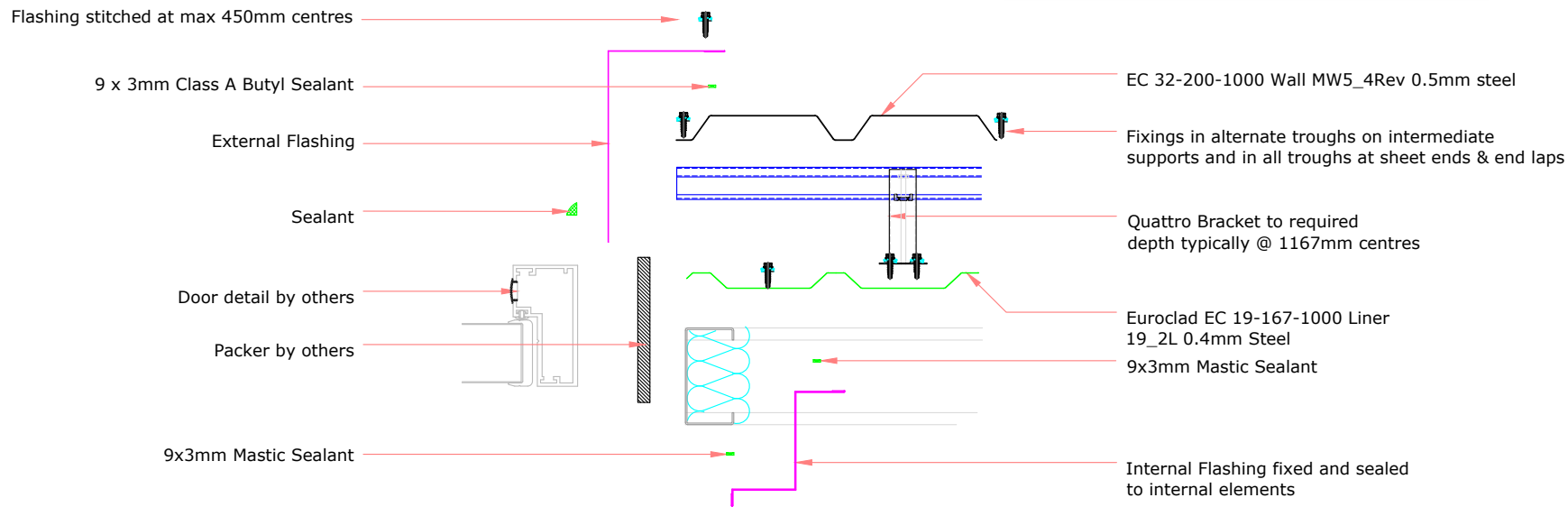
TITLE: Elite System 52  
DWG NO: E52  
DRAWN: CD  
CHECK: MP  
DATE: Jan 2020  
SCALE: NTS

This draft drawing has been supplied by Euroclad Group Ltd for the purpose of guidance free of charge. It is a suggested typical detail and as such should not be assumed suitable for any specific project or application. No responsibility is assumed for errors or misinterpretations resulting from the information contained in the drawing. Details are for illustration only and no liability is accepted. We reserve the right to change the details without notice. The drawing is copyright, it remains our property.

To be read in conjunction with Elite System specification documents

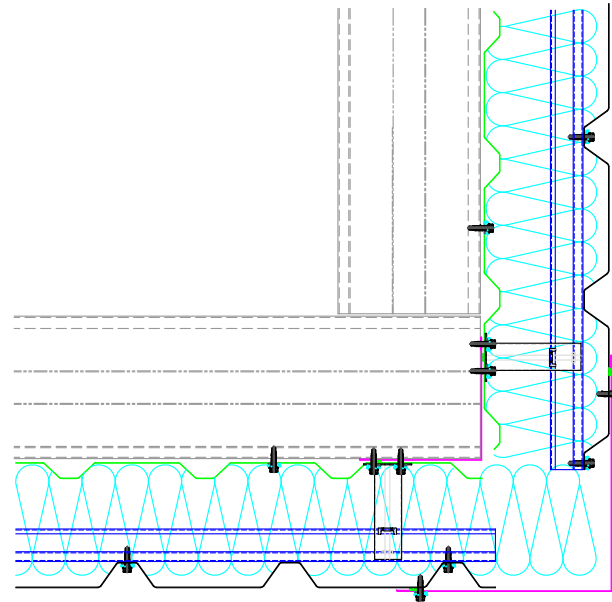


**EUROCLAD ELITE SYSTEM 52 WALL CONSTRUCTION**



Insulation excluded for clarity

A range of mineral & glass wool insulations are available for different requirements



**ELITE SYSTEMS**



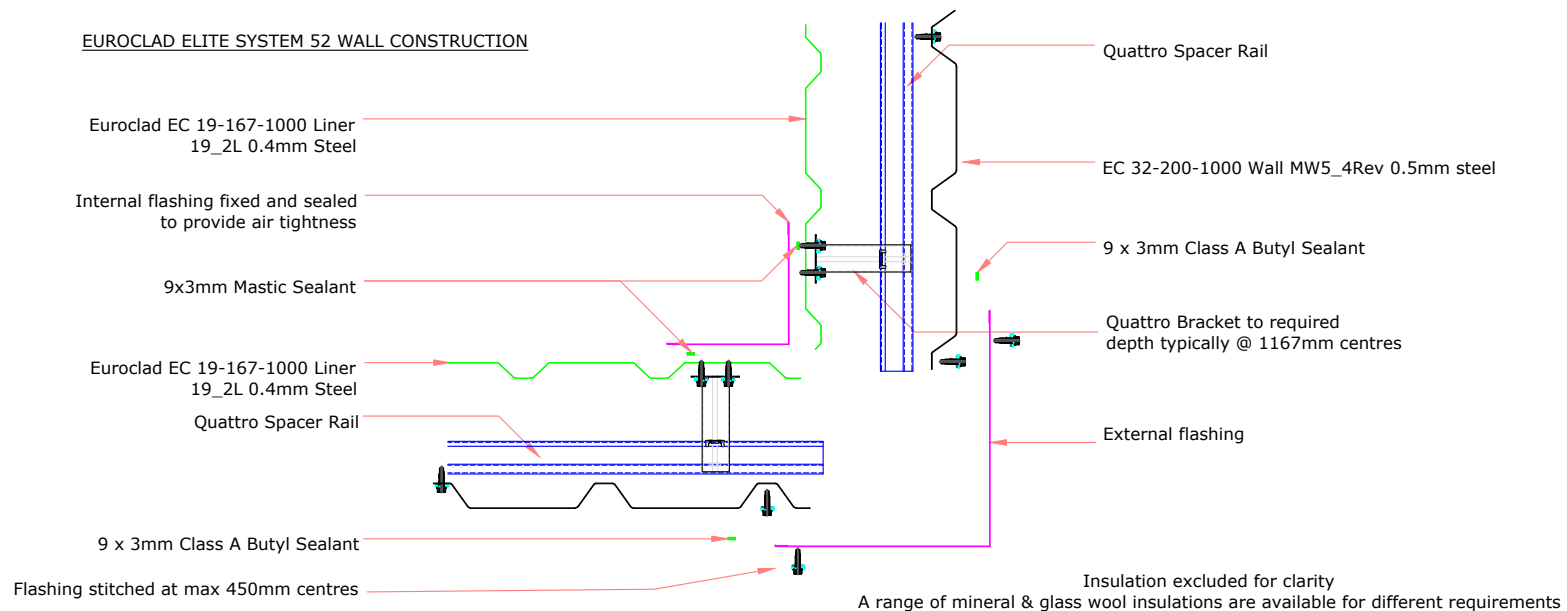
www.euroclad.com  
 Tel: +44 (0)2922 010 101  
 Fax: +44 (0)2922 010 122

TITLE: Elite System 52  
 DWG NO: E52  
 DRAWN: CD  
 CHECK: MP  
 DATE: Jan 2020  
 SCALE: NTS

This draft drawing has been supplied by Euroclad Group Ltd for the purpose of guidance free of charge. It is a suggested typical detail and as such should not be assumed suitable for any specific project or application. No responsibility is assumed for errors or misinterpretations resulting from the information contained in the drawing. Details are for illustration only and no liability is accepted. We reserve the right to change the details without notice. The drawing is copyright, it remains our property.

To be read in conjunction with Elite System specification documents

EUROCLAD ELITE SYSTEM 52 WALL CONSTRUCTION



**ELITE SYSTEMS**

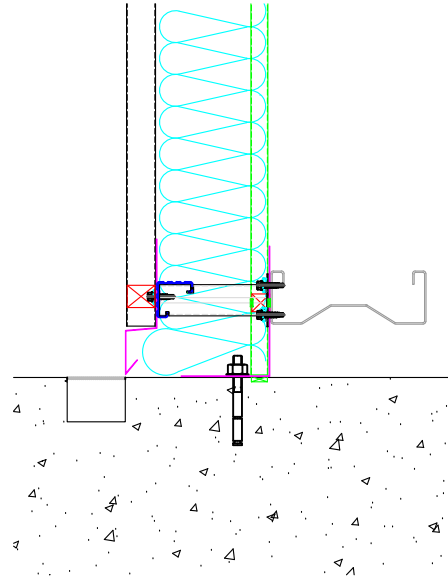


www.euroclad.com  
Tel: +44 (0)2922 010 101  
Fax: +44 (0)2922 010 122

TITLE: Elite System 52  
DWG NO: E52  
DRAWN: CD  
CHECK: MP  
DATE: Jan 2020  
SCALE: NTS

This draft drawing has been supplied by Euroclad Group Ltd for the purpose of guidance free of charge. It is a suggested typical detail and as such should not be assumed suitable for any specific project or application. No responsibility is assumed for errors or misinterpretations resulting from the information contained in the drawing. Details are for illustration only and no liability is accepted. We reserve the right to change the details without notice. The drawing is copyright, it remains our property.

To be read in conjunction with Elite System specification documents



**EUROCLAD ELITE SYSTEM 52 WALL CONSTRUCTION**

EC 32-200-1000 Wall MW5\_4Rev 0.5mm steel

Euroclad EC 19-167-1000 Liner 19\_2L 0.4mm Steel

Quattro Bracket to required depth typically @ 1167mm centres

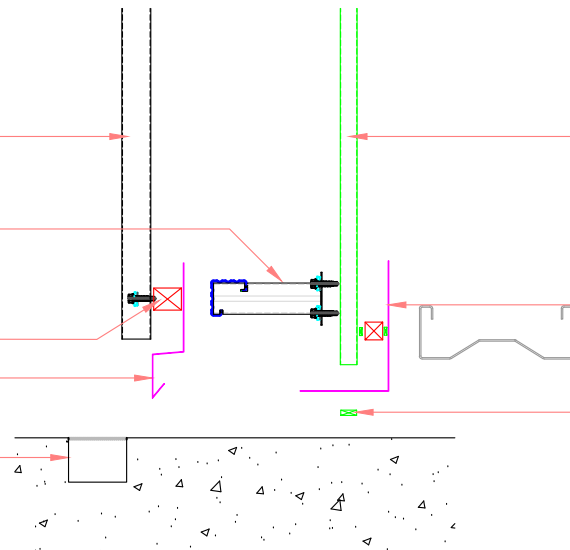
Profile Filler

Drip Flashing

Drainage Point

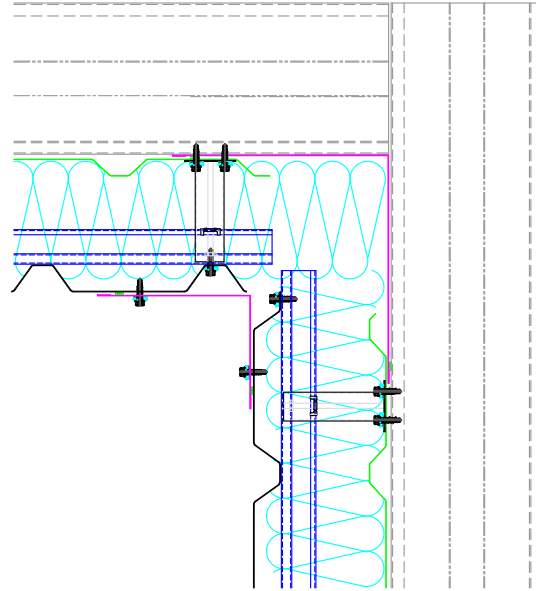
Internal Flashing and profile filler sealed to liner

Large amount of sealant to make allowance for imperfection in concrete and ensure good airtightness. Seal may be achieved at flashing or structural element such as ring beam, depending on project specific details.



Insulation excluded for clarity  
A range of mineral & glass wool insulations are available for different requirements





**ELITE SYSTEMS**



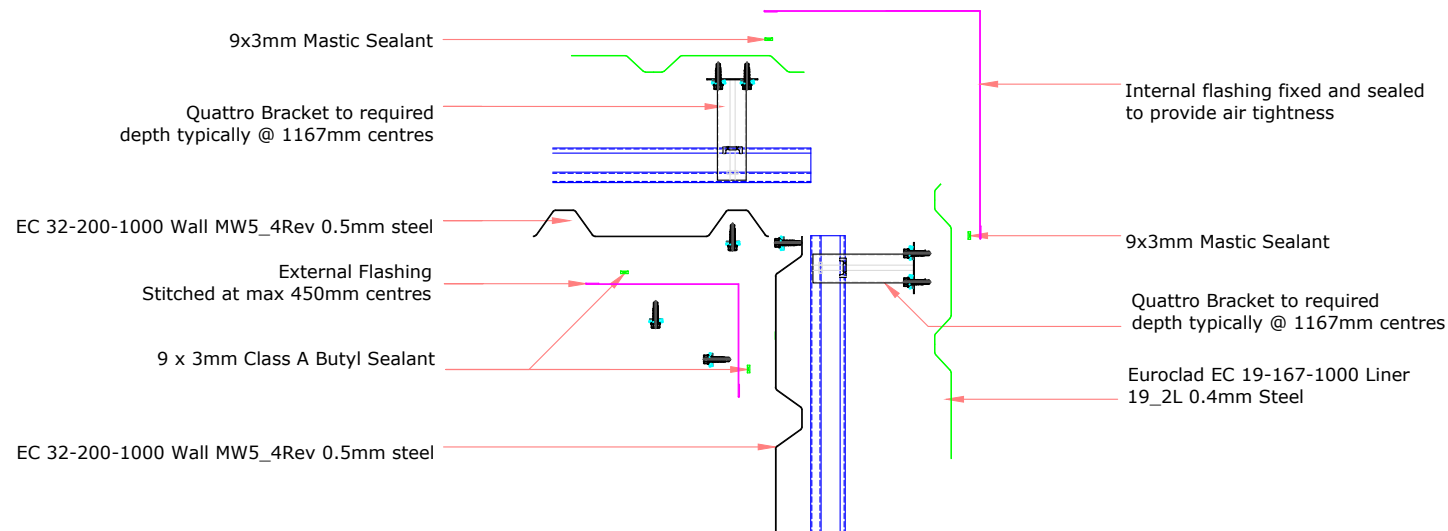
www.euroclad.com  
 Tel: +44 (0)2922 010 101  
 Fax: +44 (0)2922 010 122

TITLE: Elite System 52  
 DWG NO: E52  
 DRAWN: CD  
 CHECK: MP  
 DATE: Jan 2020  
 SCALE: NTS

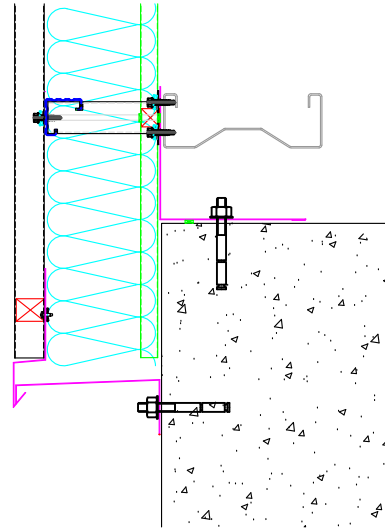
This draft drawing has been supplied by Euroclad Group Ltd for the purpose of guidance free of charge. It is a suggested typical detail and as such should not be assumed suitable for any specific project or application. No responsibility is assumed for errors or misinterpretations resulting from the information contained in the drawing. Details are for illustration only and no liability is accepted. We reserve the right to change the details without notice. The drawing is copyright, it remains our property.

To be read in conjunction with Elite System specification documents

**EUROCLAD ELITE SYSTEM 52 WALL CONSTRUCTION**



Insulation excluded for clarity  
 A range of mineral & glass wool insulations are available for different requirements



**ELITE SYSTEMS**



www.euroclad.com  
Tel: +44 (0)2922 010 101  
Fax: +44 (0)2922 010 122

TITLE: Elite System 52  
DWG NO: E52  
DRAWN: CD  
CHECK: MP  
DATE: Jan 2020  
SCALE: NTS

This draft drawing has been supplied by Euroclad Group Ltd for the purpose of guidance free of charge. It is a suggested typical detail and as such should not be assumed suitable for any specific project or application. No responsibility is assumed for errors or misinterpretations resulting from the information contained in the drawing. Details are for illustration only and no liability is accepted. We reserve the right to change the details without notice. The drawing is copyright, it remains our property.

To be read in conjunction with Elite System specification documents

**EUROCLAD ELITE SYSTEM 52 WALL CONSTRUCTION**

EC 32-200-1000 Wall MW5\_4Rev 0.5mm steel

Euroclad 19/1000 0.4 Steel Liner

Quattro Bracket to required depth typically @ 1167mm centres

Profile Filler

Drip Flashing

Closure Flashing

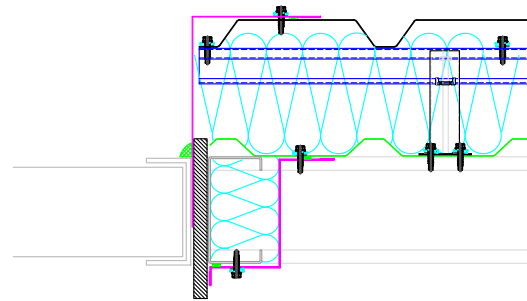
Liner Flashing fillers fixed and sealed to liners to provide air tightness and vapour control

Large amount of sealant to make allowance for imperfection in concrete and ensure good airtightness. Seal may be achieved at flashing or structural element such as ring beam, depending on project specific details.

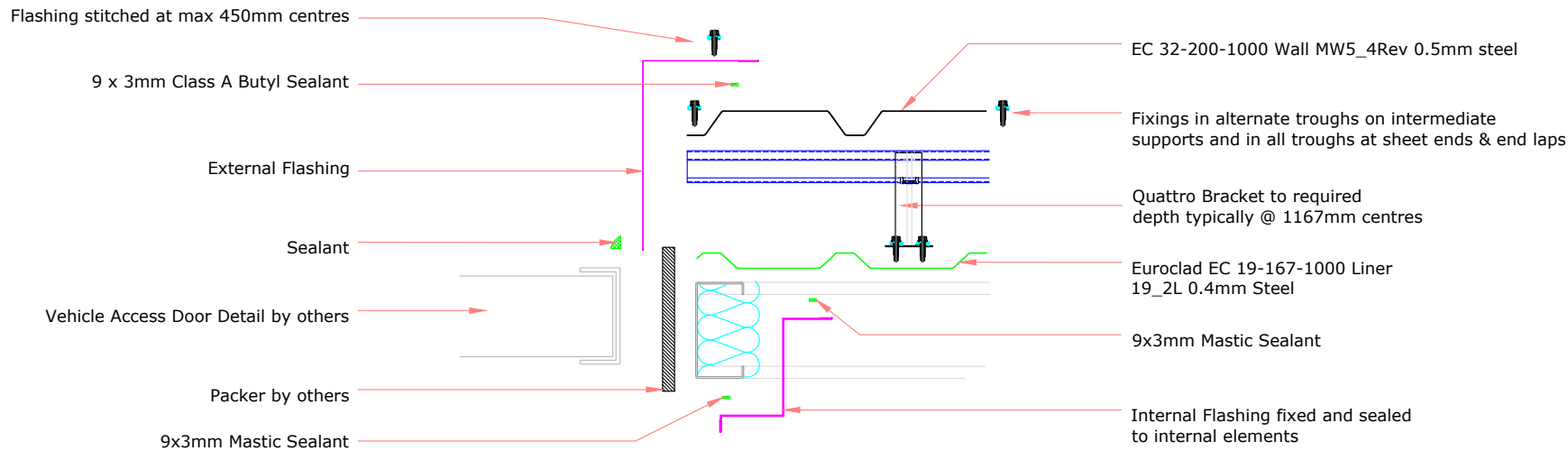
Insulation excluded for clarity  
A range of mineral & glass wool insulations are available for different requirements

This draft drawing has been supplied by Euroclad Group Ltd for the purpose of guidance free of charge. It is a suggested typical detail and as such should not be assumed suitable for any specific project or application. No responsibility is assumed for errors or misinterpretations resulting from the information contained in the drawing. Details are for illustration only and no liability is accepted. We reserve the right to change the details without notice. The drawing is copyright, it remains our property.

To be read in conjunction with Elite System specification documents



**EUROCLAD ELITE SYSTEM 52 WALL CONSTRUCTION**



**ELITE SYSTEMS**

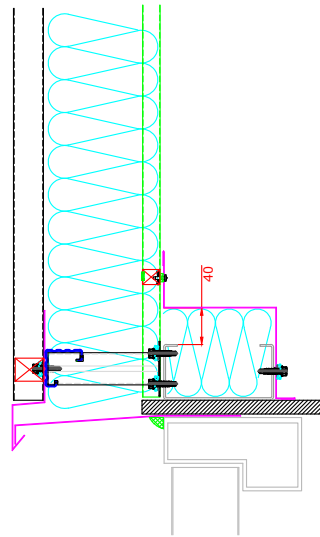


www.euroclad.com  
 Tel: +44 (0)2922 010 101  
 Fax: +44 (0)2922 010 122

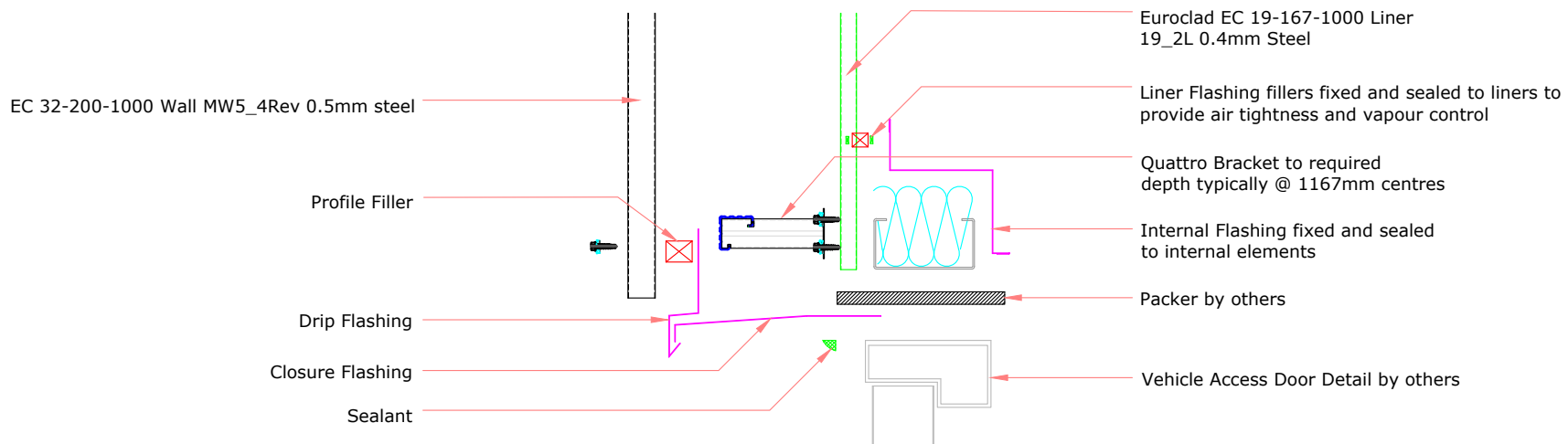
TITLE: Elite System 52  
 DWG NO: E52  
 DRAWN: CD  
 CHECK: MP  
 DATE: Jan 2020  
 SCALE: NTS

This draft drawing has been supplied by Euroclad Group Ltd for the purpose of guidance free of charge. It is a suggested typical detail and as such should not be assumed suitable for any specific project or application. No responsibility is assumed for errors or misinterpretations resulting from the information contained in the drawing. Details are for illustration only and no liability is accepted. We reserve the right to change the details without notice. The drawing is copyright, it remains our property.

To be read in conjunction with Elite System specification documents



**EUROCLAD ELITE SYSTEM 52 WALL CONSTRUCTION**



Insulation excluded for clarity  
 A range of mineral & glass wool insulations are available for different requirements

**ELITE SYSTEMS**

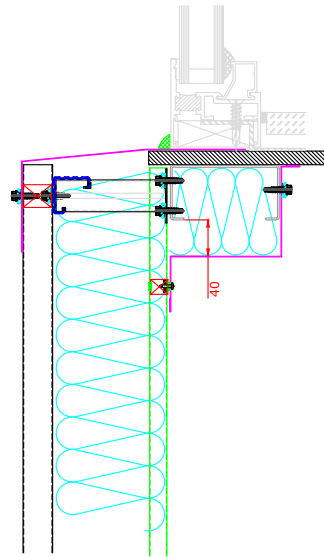
**EUROCLAD**

www.euroclad.com  
 Tel: +44 (0)2922 010 101  
 Fax: +44 (0)2922 010 122

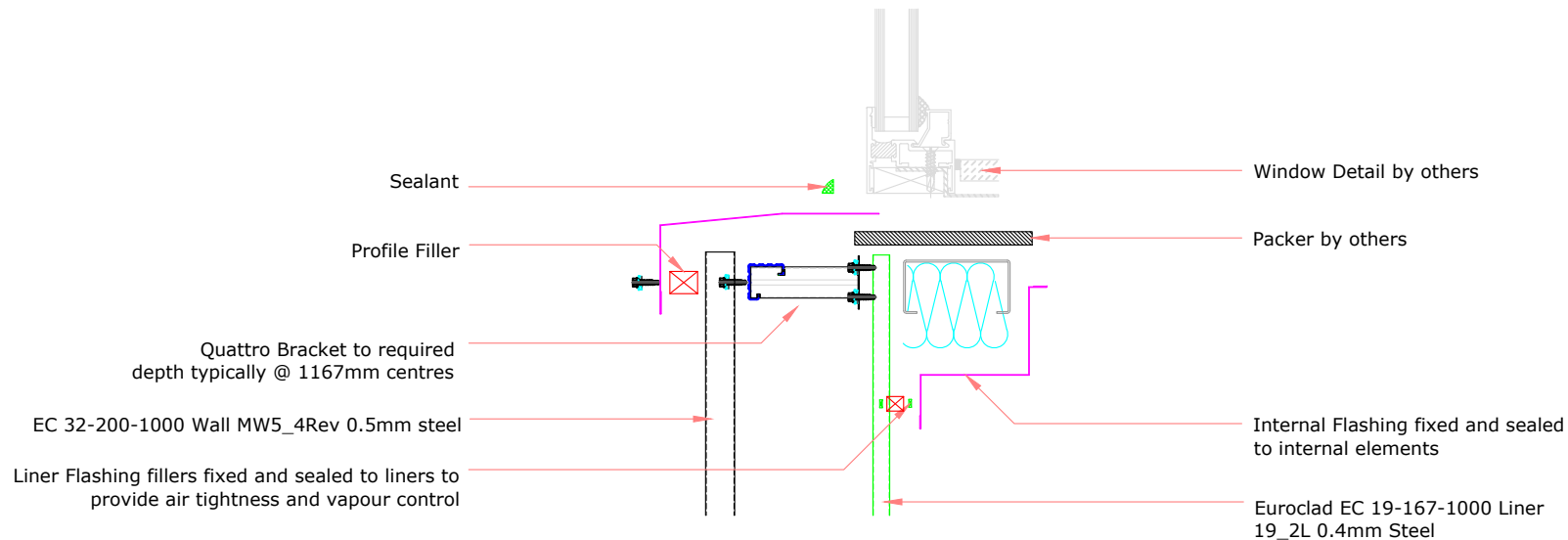
TITLE: Elite System 52  
 DWG NO: E52  
 DRAWN: CD  
 CHECK: MP  
 DATE: Jan 2020  
 SCALE: NTS

This draft drawing has been supplied by Euroclad Group Ltd for the purpose of guidance free of charge. It is a suggested typical detail and as such should not be assumed suitable for any specific project or application. No responsibility is assumed for errors or misinterpretations resulting from the information contained in the drawing. Details are for illustration only and no liability is accepted. We reserve the right to change the details without notice. The drawing is copyright, it remains our property.

To be read in conjunction with Elite System specification documents



**EUROCLAD ELITE SYSTEM 52 WALL CONSTRUCTION**



Insulation excluded for clarity  
 A range of mineral & glass wool insulations are available for different requirements

**ELITE SYSTEMS**

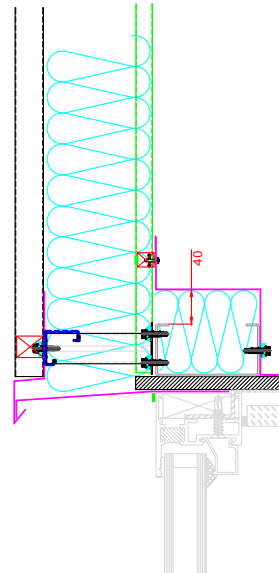


www.euroclad.com  
 Tel: +44 (0)2922 010 101  
 Fax: +44 (0)2922 010 122

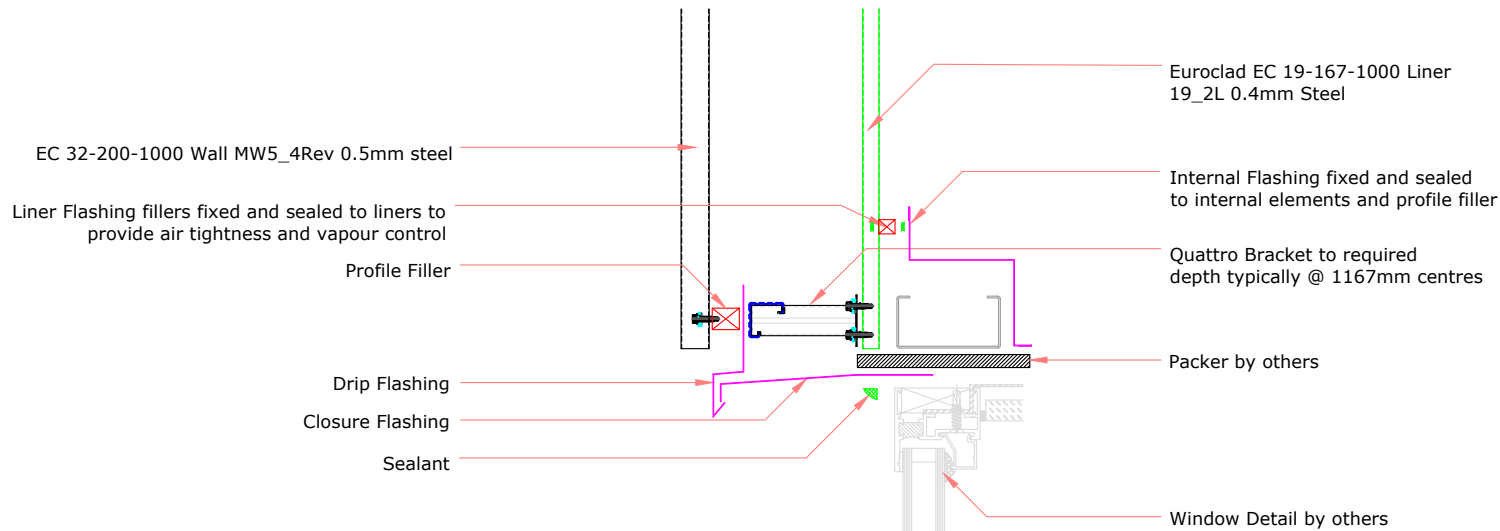
TITLE: Elite System 52  
 DWG NO: E52  
 DRAWN: CD  
 CHECK: MP  
 DATE: Jan 2020  
 SCALE: NTS

This draft drawing has been supplied by Euroclad Group Ltd for the purpose of guidance free of charge. It is a suggested typical detail and as such should not be assumed suitable for any specific project or application. No responsibility is assumed for errors or misinterpretations resulting from the information contained in the drawing. Details are for illustration only and no liability is accepted. We reserve the right to change the details without notice. The drawing is copyright, it remains our property.

To be read in conjunction with Elite System specification documents



**EUROCLAD ELITE SYSTEM 52 WALL CONSTRUCTION**



EC 32-200-1000 Wall MW5\_4Rev 0.5mm steel

Liner Flashing fillers fixed and sealed to liners to provide air tightness and vapour control

Profile Filler

Drip Flashing

Closure Flashing

Sealant

Euroclad EC 19-167-1000 Liner 19\_2L 0.4mm Steel

Internal Flashing fixed and sealed to internal elements and profile filler

Quattro Bracket to required depth typically @ 1167mm centres

Packer by others

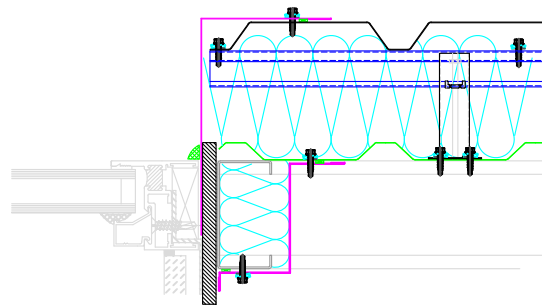
Window Detail by others

Insulation excluded for clarity

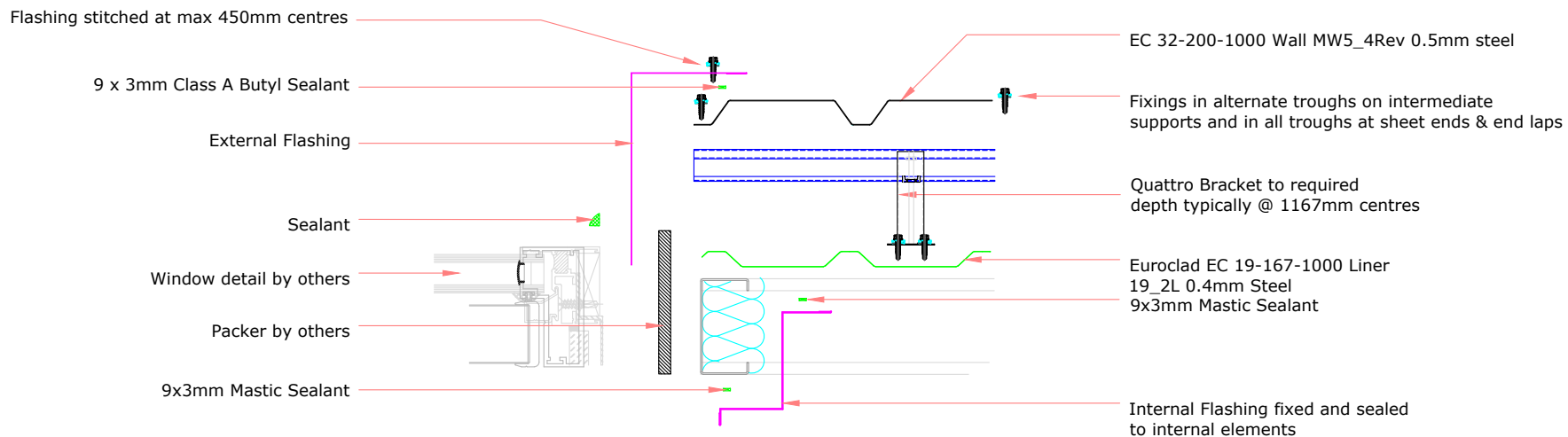
A range of mineral & glass wool insulations are available for different requirements

This draft drawing has been supplied by Euroclad Group Ltd for the purpose of guidance free of charge. It is a suggested typical detail and as such should not be assumed suitable for any specific project or application. No responsibility is assumed for errors or misinterpretations resulting from the information contained in the drawing. Details are for illustration only and no liability is accepted. We reserve the right to change the details without notice. The drawing is copyright, it remains our property.

To be read in conjunction with Elite System specification documents



**EUROCLAD ELITE SYSTEM 52 WALL CONSTRUCTION**



Insulation excluded for clarity  
A range of mineral & glass wool insulations are available for different requirements