

ELITE SYSTEMS



www.euroclad.com
Tel: +44 (0)2922 010 101
Fax: +44 (0)2922 010 122

TITLE: Elite System 57

DWG NO: E57

DRAWN: CD

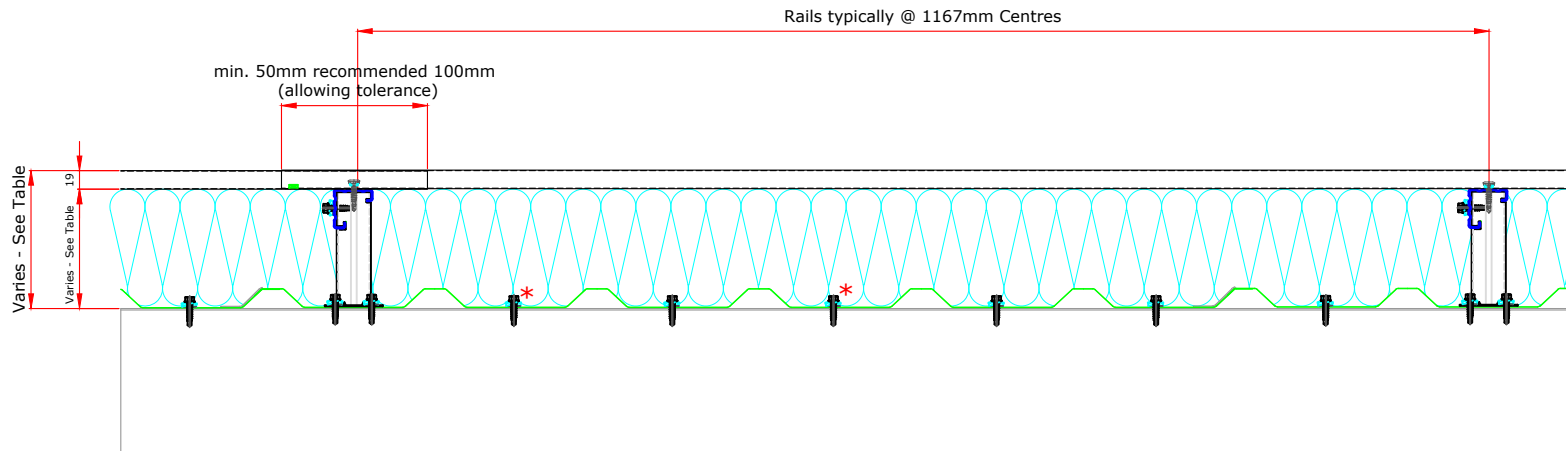
CHECK: MP

DATE: Jan 2020

SCALE: NTS

This draft drawing has been supplied by Euroclad Group Ltd for the purpose of guidance free of charge. It is a suggested typical detail and as such should not be assumed suitable for any specific project or application. No responsibility is assumed for errors or misinterpretations resulting from the information contained in the drawing. Details are for illustration only and no liability is accepted. We reserve the right to change the details without notice. The drawing is copyright, it remains our property.

To be read in conjunction with Elite System specification documents



*Fixings with an asterisk are required on sheet ends and end laps only.

Elite System 57				
Bracket Height	Insulation Thickness	Insulation Value	Overall System Depth	U Value at 1.5M Centres
100mm	100mm	0.040	120mm	0.45
120mm	120mm	0.040	140mm	0.37
140mm	140mm	0.040	160mm	0.32
160mm	160mm	0.040	180mm	0.28
180mm	180mm	0.040	200mm	0.25
200mm	200mm	0.040	220mm	0.22
220mm	220mm	0.040	240mm	0.20

Please Note:

System is fire rated using Knauf Factoryclad 40 ECOSE insulation of minimum thickness 80mm with steel outer sheet only, to achieve 120 minutes Integrity, 15 minutes (min) Insulation which meets the requirements of Building Regulations Part B for external walls where fire attack is from inside the building and the wall is 1M or more from the boundary.

System can be fire rated using Rockwool insulation of minimum thickness 120mm with steel outer sheet only, with liner stitched at 300mm centres, to achieve 120 minutes Integrity, 30 minutes (min) Insulation.

Ensure roll edges are lapped/butted to ensure no gaps.

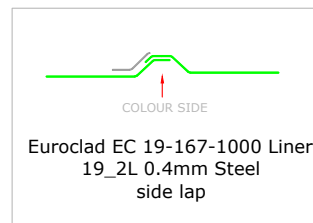
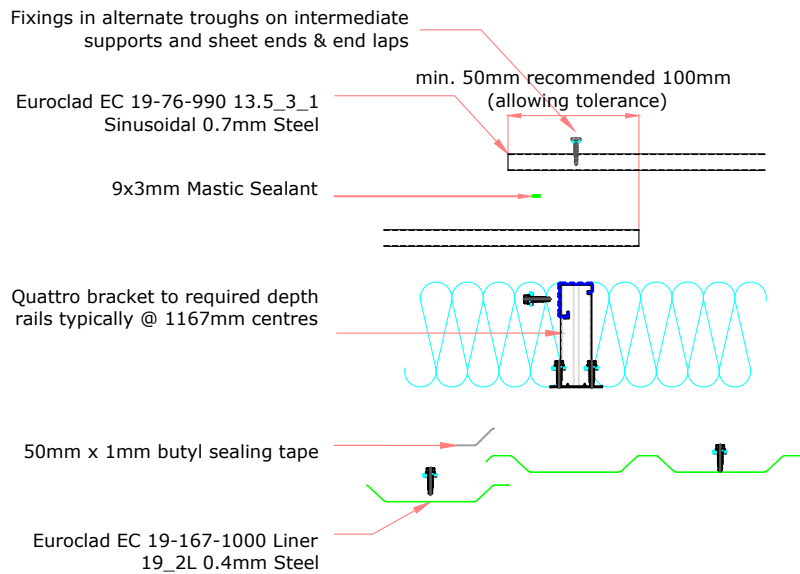
Please refer to the technical note: Installer guidance for quilt insulation in Elite Wall Systems
Refer to Technical for advice on constructions requiring better U values than those shown.

Please Note:
 System is fire rated using Knauf Factoryclad 40 ECOSE insulation of minimum thickness 80mm with steel outer sheet only, to achieve 120 minutes Integrity, 15 minutes (min) Insulation which meets the requirements of Building Regulations Part B for external walls where fire attack is from inside the building and the wall is 1M or more from the boundary.

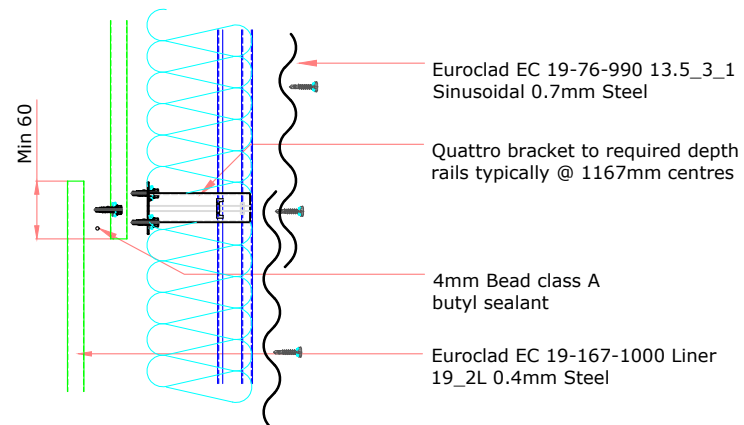
System can be fire rated using Rockwool insulation of minimum thickness 120mm with steel outer sheet only, with liner stitched at 300mm centres, to achieve 120 minutes Integrity, 30 minutes (min) Insulation.

Ensure roll edges are lapped/butted to ensure no gaps.

ELITE SYSTEM 57 END LAP DETAIL



ELITE SYSTEM 57 SIDE LAP DETAIL



ELITE SYSTEMS

EUROCLAD

www.euroclad.com
 Tel: +44 (0)2922 010 101
 Fax: +44 (0)2922 010 122

TITLE: Elite System 57
 DWG NO: E57
 DRAWN: CD
 CHECK: MP
 DATE: Jan 2020
 SCALE: NTS

This draft drawing has been supplied by Euroclad Group Ltd for the purpose of guidance free of charge. It is a suggested typical detail and as such should not be assumed suitable for any specific project or application. No responsibility is assumed for errors or misinterpretations resulting from the information contained in the drawing. Details are for illustration only and no liability is accepted. We reserve the right to change the details without notice. The drawing is copyright, it remains our property.

To be read in conjunction with Elite System specification documents

ELITE SYSTEMS

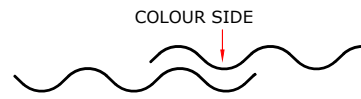
EUROCLAD

www.euroclad.com
Tel: +44 (0)2922 010 101
Fax: +44 (0)2922 010 122

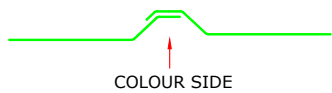
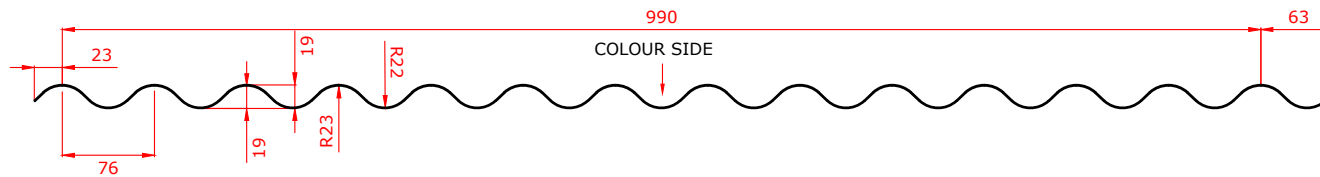
TITLE: Elite System 57
DWG NO: E57
DRAWN: CD
CHECK: MP
DATE: Jan 2020
SCALE: NTS

This draft drawing has been supplied by Euroclad Group Ltd for the purpose of guidance free of charge. It is a suggested typical detail and as such should not be assumed suitable for any specific project or application. No responsibility is assumed for errors or misinterpretations resulting from the information contained in the drawing. Details are for illustration only and no liability is accepted. We reserve the right to change the details without notice. The drawing is copyright, it remains our property.

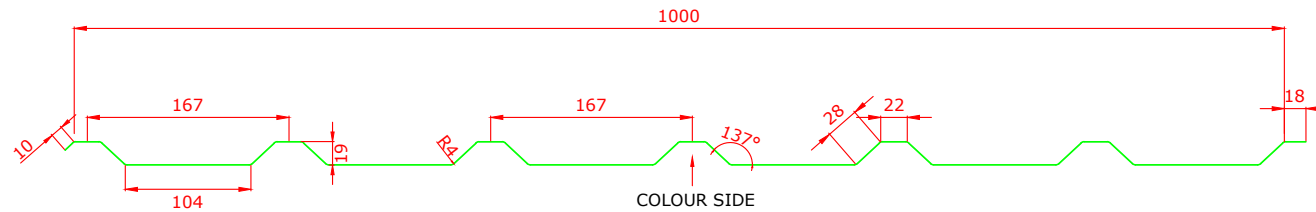
To be read in conjunction with Elite System specification documents



**EUROCLAD EC 19-76-990 13.5_3_1 SINUSOIDAL
0.7mm EXTERNAL SHEET**

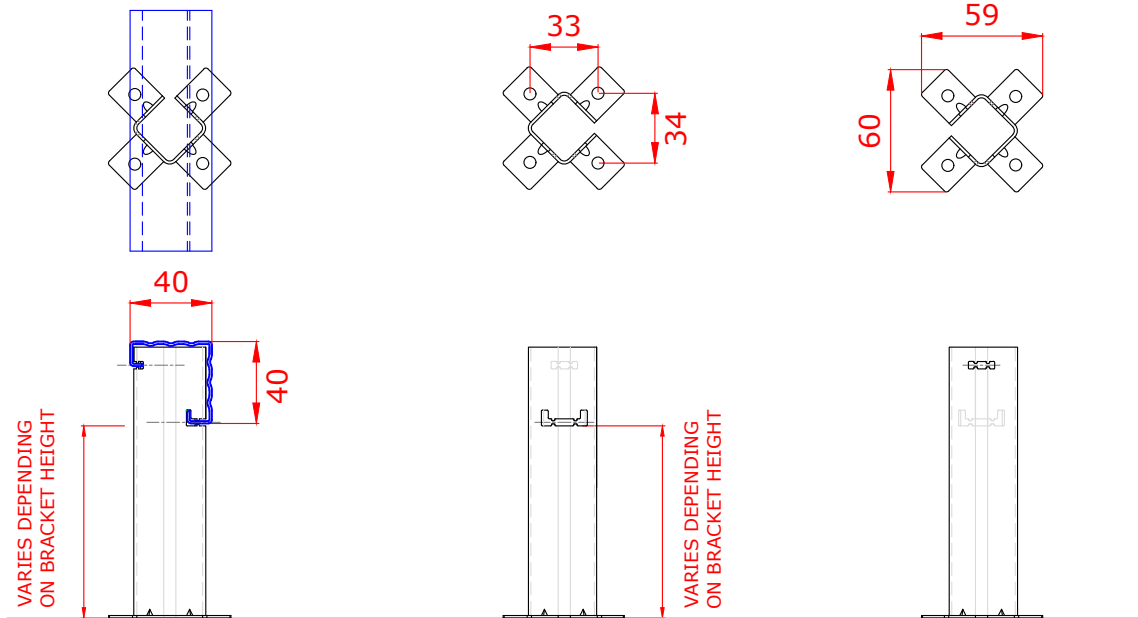
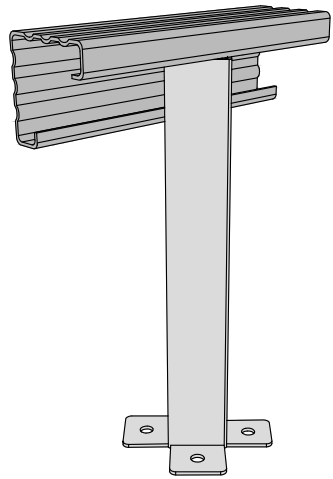


**EUROCLAD EC 19-167-1000 Liner 19_2L 0.4mm
LINER**

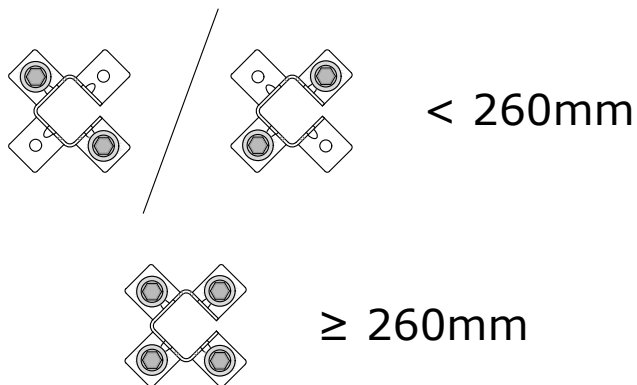


This draft drawing has been supplied by Euroclad Group Ltd for the purpose of guidance free of charge. It is a suggested typical detail and as such should not be assumed suitable for any specific project or application. No responsibility is assumed for errors or misinterpretations resulting from the information contained in the drawing. Details are for illustration only and no liability is accepted. We reserve the right to change the details without notice. The drawing is copyright, it remains our property.

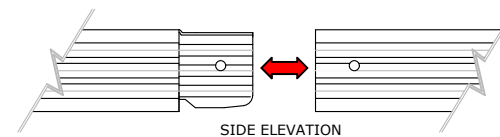
To be read in conjunction with Elite System specification documents

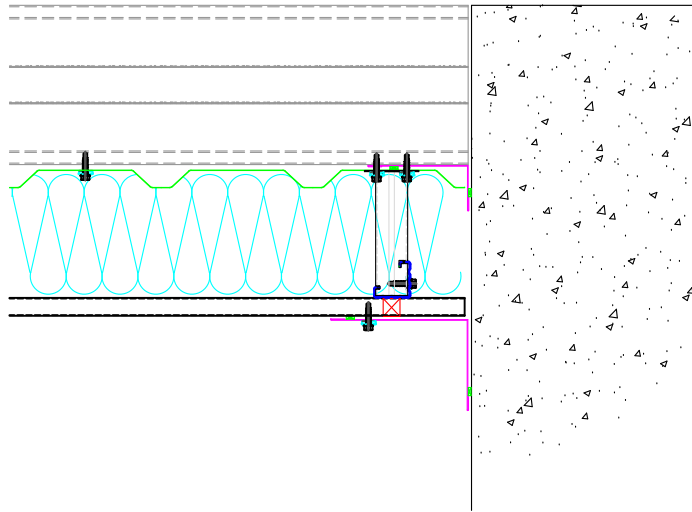


Brackets less than 260mm require 2 fixings diagonally opposite.
 Brackets 260mm or more require 4 fixings.



Maximum bar cantilever at free ends is 300mm.
 Spigot can fall anywhere between two brackets.





ELITE SYSTEMS

EUROCLAD

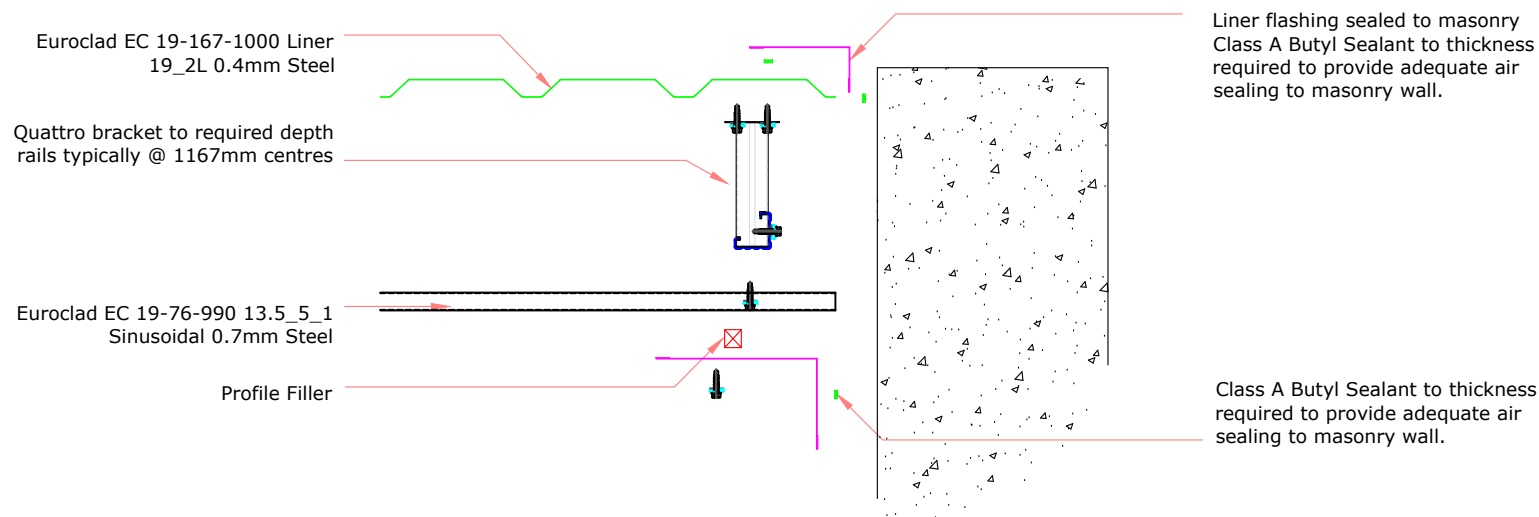
www.euroclad.com
Tel: +44 (0)2922 010 101
Fax: +44 (0)2922 010 122

TITLE: Elite System 57
DWG NO: E57
DRAWN: CD
CHECK: MP
DATE: Jan 2020
SCALE: NTS

This draft drawing has been supplied by Euroclad Group Ltd for the purpose of guidance free of charge. It is a suggested typical detail and as such should not be assumed suitable for any specific project or application. No responsibility is assumed for errors or misinterpretations resulting from the information contained in the drawing. Details are for illustration only and no liability is accepted. We reserve the right to change the details without notice. The drawing is copyright, it remains our property.

To be read in conjunction with Elite System specification documents

EUROCLAD ELITE SYSTEM 57 WALL CONSTRUCTION



Insulation excluded for clarity
A range of mineral & glass wool insulations are available for different requirements

ELITE SYSTEMS

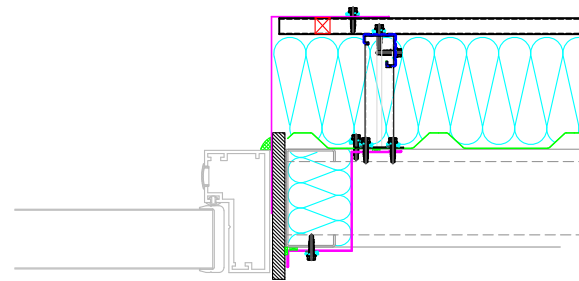


www.euroclad.com
 Tel: +44 (0)2922 010 101
 Fax: +44 (0)2922 010 122

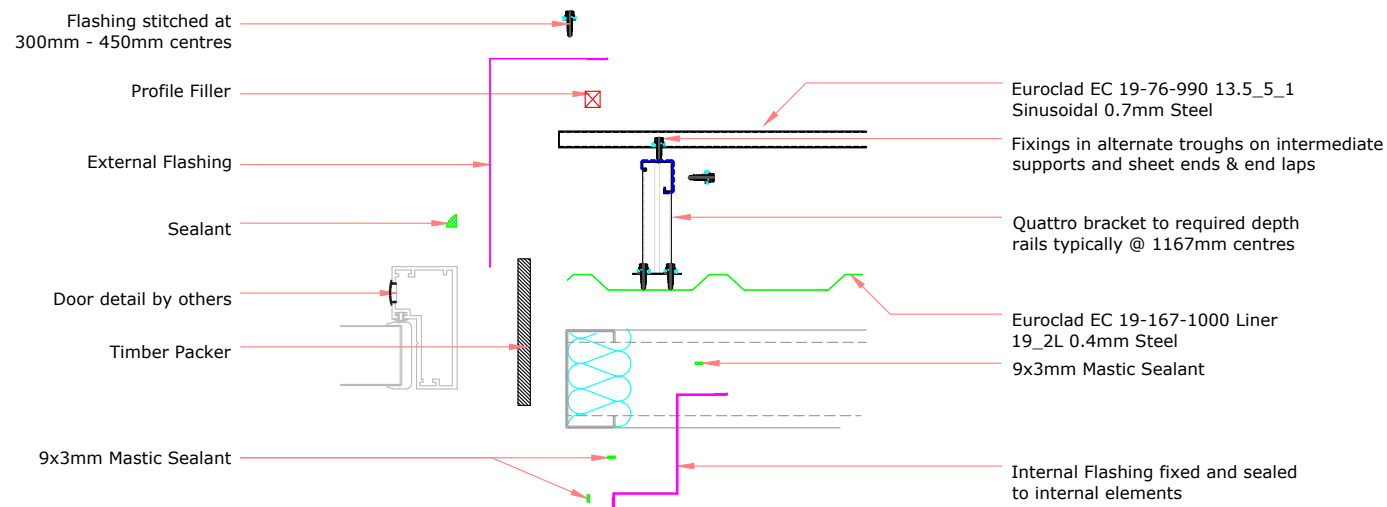
TITLE: Elite System 57
 DWG NO: E57
 DRAWN: CD
 CHECK: MP
 DATE: Jan 2020
 SCALE: NTS

This draft drawing has been supplied by Euroclad Group Ltd for the purpose of guidance free of charge. It is a suggested typical detail and as such should not be assumed suitable for any specific project or application. No responsibility is assumed for errors or misinterpretations resulting from the information contained in the drawing. Details are for illustration only and no liability is accepted. We reserve the right to change the details without notice. The drawing is copyright, it remains our property.

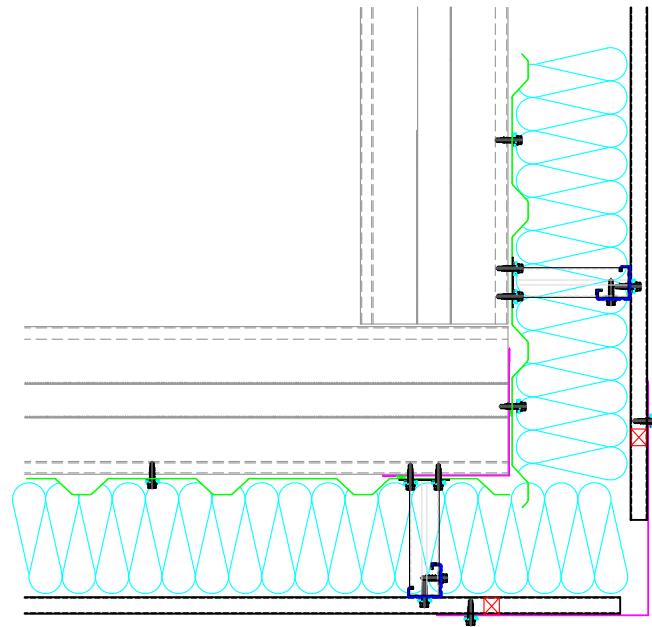
To be read in conjunction with Elite System specification documents



EUROCLAD ELITE SYSTEM 57 WALL CONSTRUCTION



Insulation excluded for clarity
 A range of mineral & glass wool insulations are available for different requirements



ELITE SYSTEMS



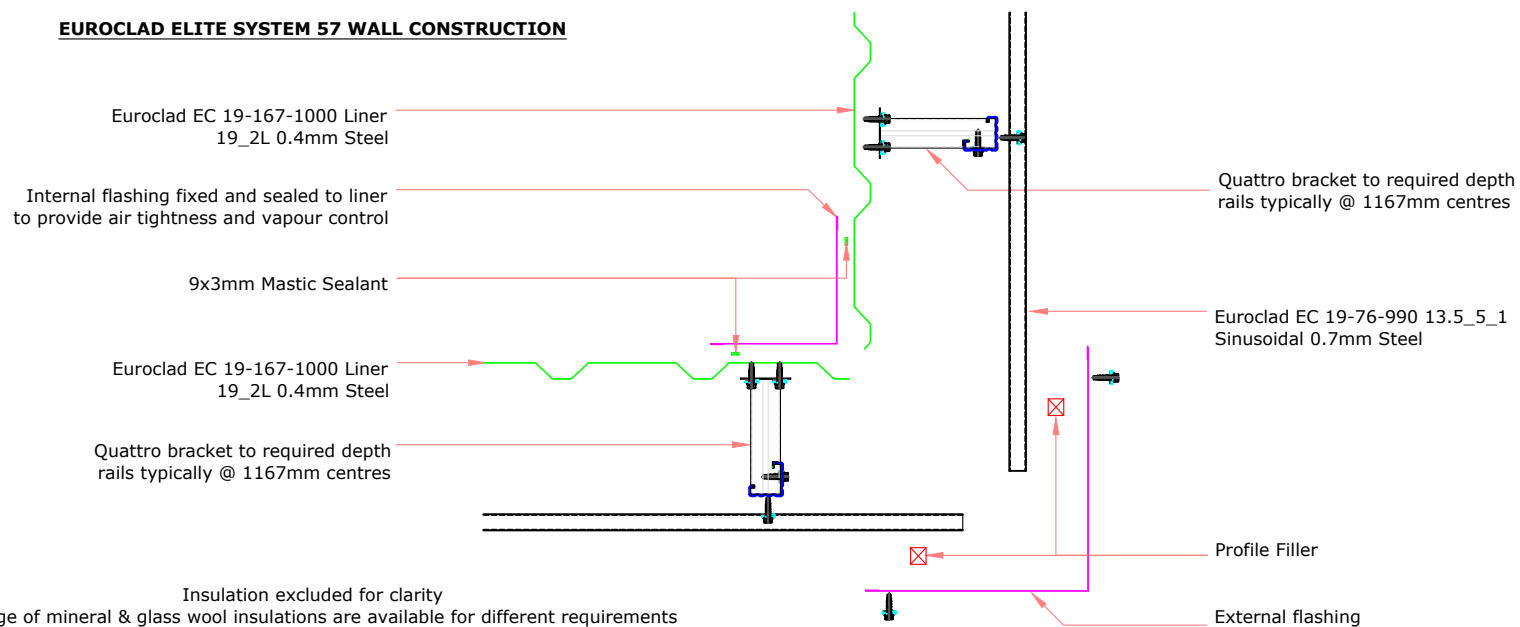
www.euroclad.com
 Tel: +44 (0)2922 010 101
 Fax: +44 (0)2922 010 122

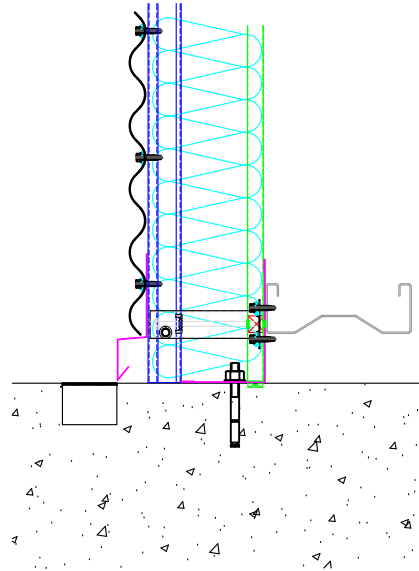
TITLE: Elite System 57
 DWG NO: E57
 DRAWN: CD
 CHECK: MP
 DATE: Jan 2020
 SCALE: NTS

This draft drawing has been supplied by Euroclad Group Ltd for the purpose of guidance free of charge. It is a suggested typical detail and as such should not be assumed suitable for any specific project or application. No responsibility is assumed for errors or misinterpretations resulting from the information contained in the drawing. Details are for illustration only and no liability is accepted. We reserve the right to change the details without notice. The drawing is copyright, it remains our property.

To be read in conjunction with Elite System specification documents

EUROCLAD ELITE SYSTEM 57 WALL CONSTRUCTION





ELITE SYSTEMS



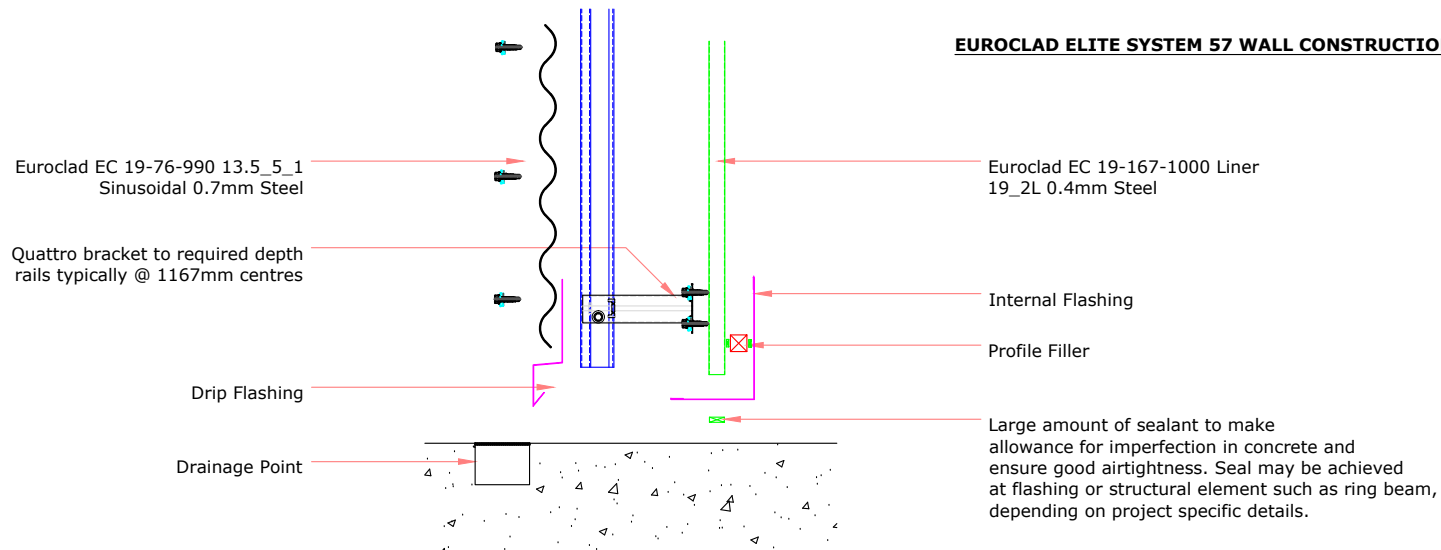
www.euroclad.com
 Tel: +44 (0)2922 010 101
 Fax: +44 (0)2922 010 122

TITLE: Elite System 57
 DWG NO: E57
 DRAWN: CD
 CHECK: MP
 DATE: Jan 2020
 SCALE: NTS

This draft drawing has been supplied by Euroclad Group Ltd for the purpose of guidance free of charge. It is a suggested typical detail and as such should not be assumed suitable for any specific project or application. No responsibility is assumed for errors or misinterpretations resulting from the information contained in the drawing. Details are for illustration only and no liability is accepted. We reserve the right to change the details without notice. The drawing is copyright, it remains our property.

To be read in conjunction with Elite System specification documents

EUROCLAD ELITE SYSTEM 57 WALL CONSTRUCTION



Insulation excluded for clarity
 A range of mineral & glass wool insulations are available for different requirements

ELITE SYSTEMS

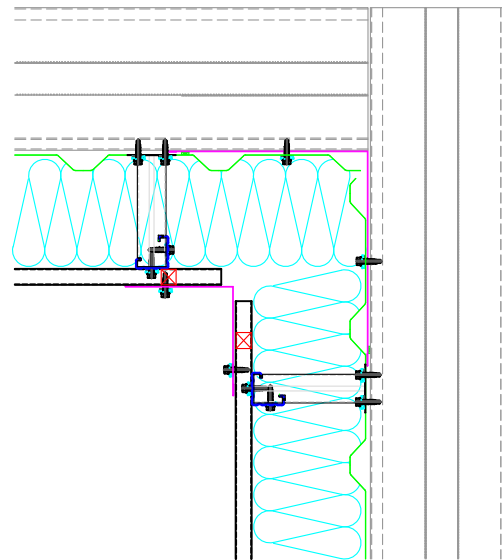


www.euroclad.com
 Tel: +44 (0)2922 010 101
 Fax: +44 (0)2922 010 122

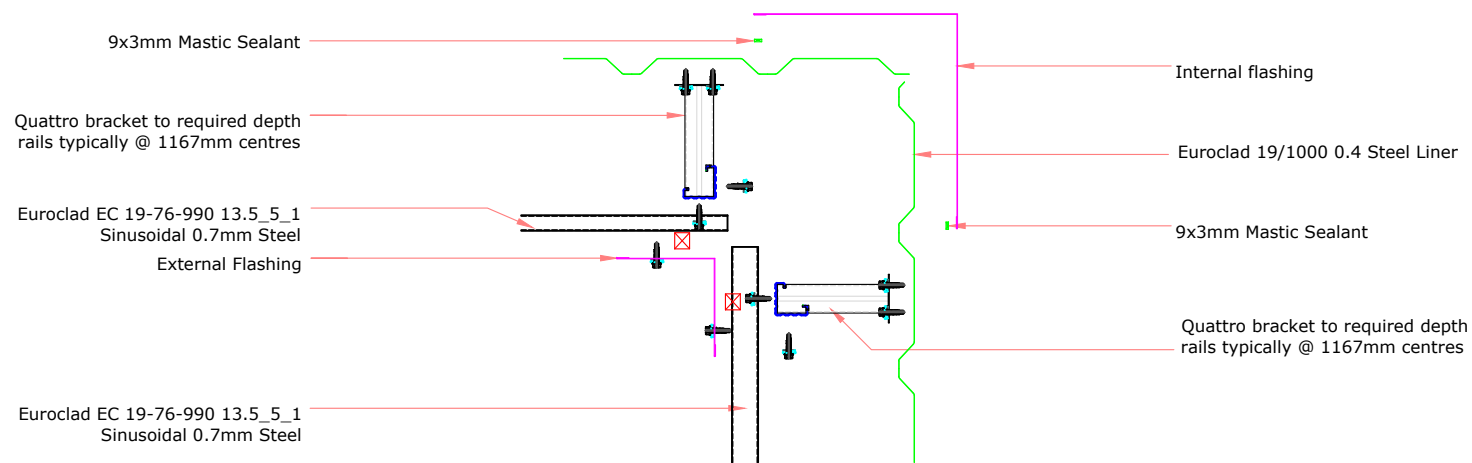
TITLE: Elite System 57
 DWG NO: E57
 DRAWN: CD
 CHECK: MP
 DATE: Jan 2020
 SCALE: NTS

This draft drawing has been supplied by Euroclad Group Ltd for the purpose of guidance free of charge. It is a suggested typical detail and as such should not be assumed suitable for any specific project or application. No responsibility is assumed for errors or misinterpretations resulting from the information contained in the drawing. Details are for illustration only and no liability is accepted. We reserve the right to change the details without notice. The drawing is copyright, it remains our property.

To be read in conjunction with Elite System specification documents



EUROCLAD ELITE SYSTEM 57 WALL CONSTRUCTION



Insulation excluded for clarity
 A range of mineral & glass wool insulations are available for different requirements

ELITE SYSTEMS

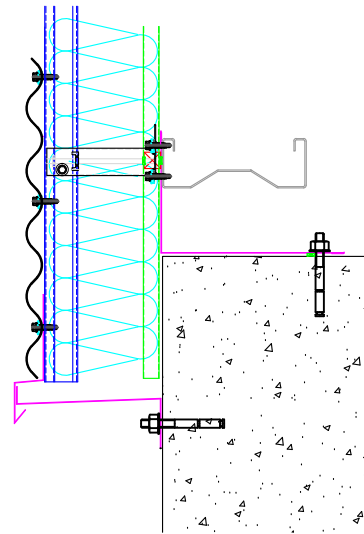


www.euroclad.com
 Tel: +44 (0)2922 010 101
 Fax: +44 (0)2922 010 122

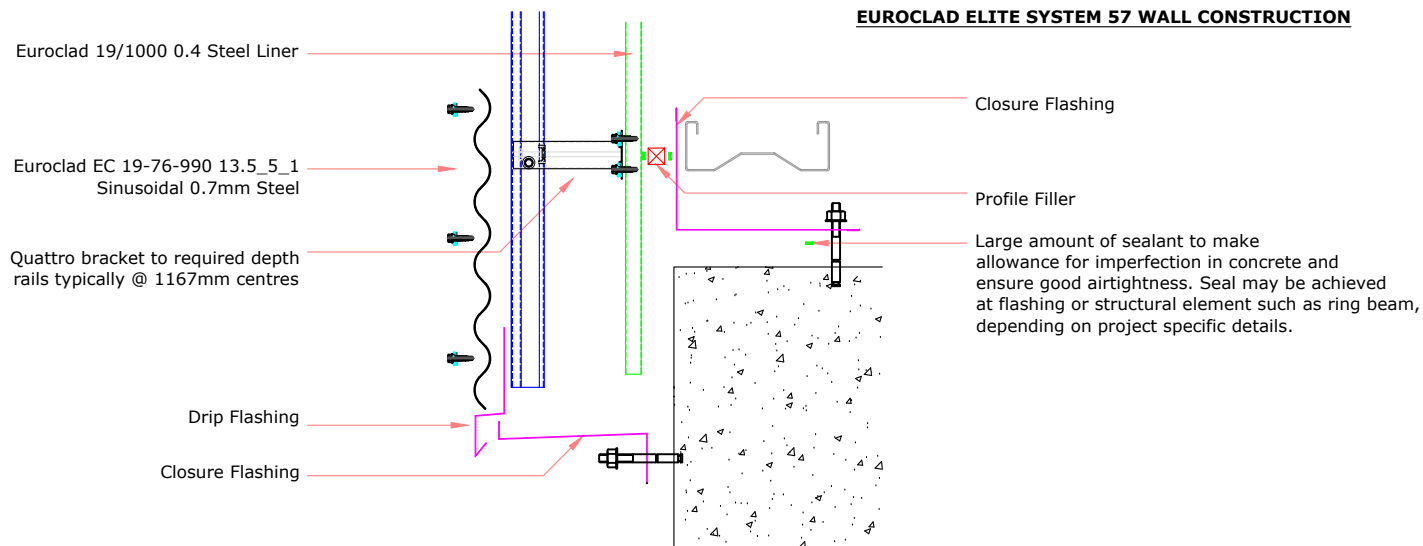
TITLE: Elite System 57
 DWG NO: E57
 DRAWN: CD
 CHECK: MP
 DATE: Jan 2020
 SCALE: NTS

This draft drawing has been supplied by Euroclad Group Ltd for the purpose of guidance free of charge. It is a suggested typical detail and as such should not be assumed suitable for any specific project or application. No responsibility is assumed for errors or misinterpretations resulting from the information contained in the drawing. Details are for illustration only and no liability is accepted. We reserve the right to change the details without notice. The drawing is copyright, it remains our property.

To be read in conjunction with Elite System specification documents



EUROCLAD ELITE SYSTEM 57 WALL CONSTRUCTION



Insulation excluded for clarity
 A range of mineral & glass wool insulations are available for different requirements

ELITE SYSTEMS

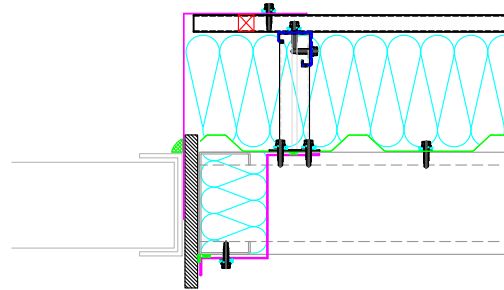


www.euroclad.com
 Tel: +44 (0)2922 010 101
 Fax: +44 (0)2922 010 122

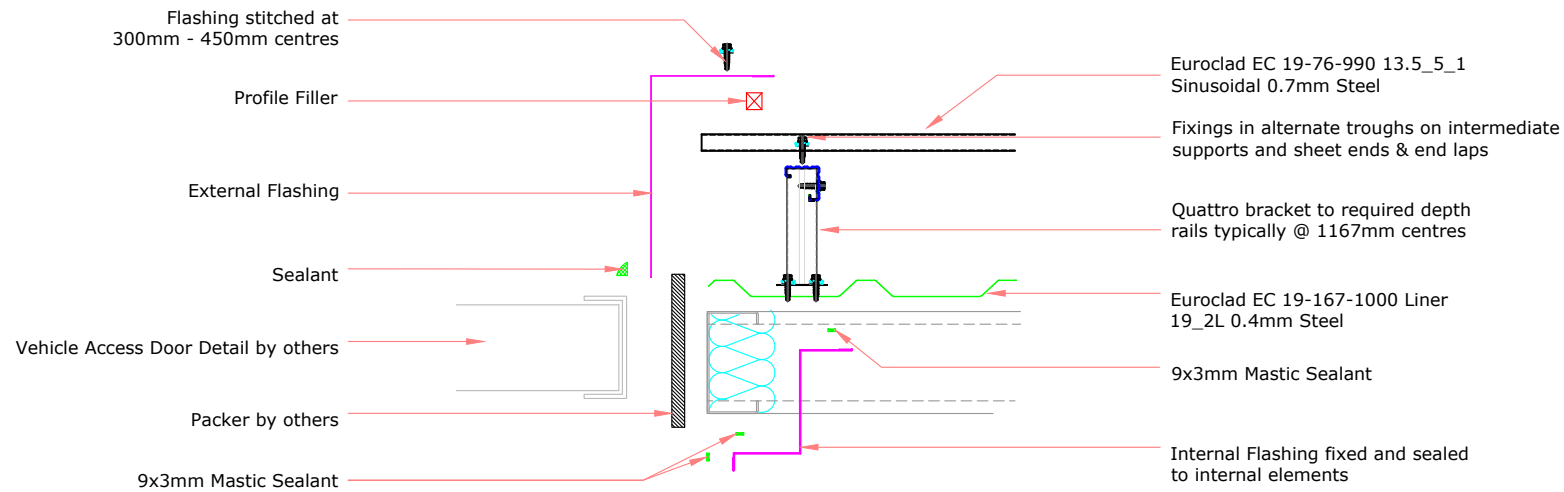
TITLE: Elite System 57
 DWG NO: E57
 DRAWN: CD
 CHECK: MP
 DATE: Jan 2020
 SCALE: NTS

This draft drawing has been supplied by Euroclad Group Ltd for the purpose of guidance free of charge. It is a suggested typical detail and as such should not be assumed suitable for any specific project or application. No responsibility is assumed for errors or misinterpretations resulting from the information contained in the drawing. Details are for illustration only and no liability is accepted. We reserve the right to change the details without notice. The drawing is copyright, it remains our property.

To be read in conjunction with Elite System specification documents



EUROCLAD ELITE SYSTEM 57 WALL CONSTRUCTION



ELITE SYSTEMS

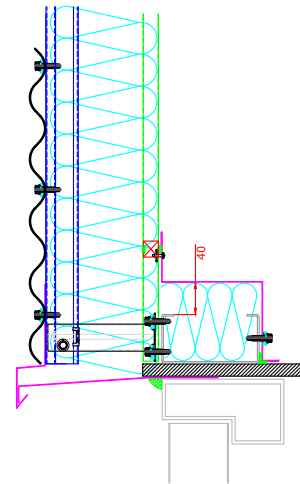


www.euroclad.com
 Tel: +44 (0)2922 010 101
 Fax: +44 (0)2922 010 122

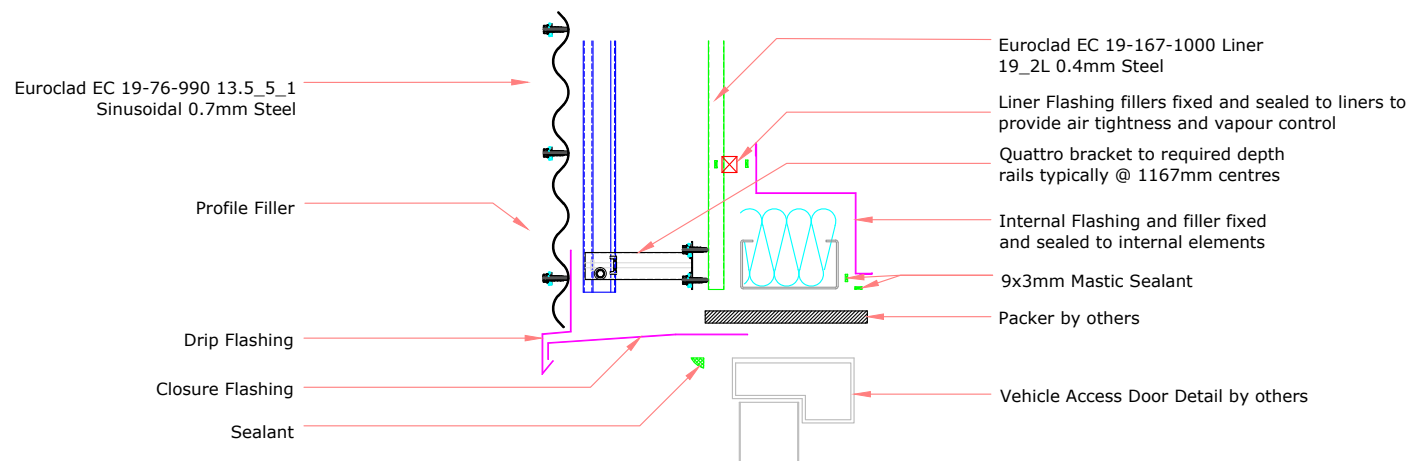
TITLE: Elite System 57
 DWG NO: E57
 DRAWN: CD
 CHECK: MP
 DATE: Jan 2020
 SCALE: NTS

This draft drawing has been supplied by Euroclad Group Ltd for the purpose of guidance free of charge. It is a suggested typical detail and as such should not be assumed suitable for any specific project or application. No responsibility is assumed for errors or misinterpretations resulting from the information contained in the drawing. Details are for illustration only and no liability is accepted. We reserve the right to change the details without notice. The drawing is copyright, it remains our property.

To be read in conjunction with Elite System specification documents



EUROCLAD ELITE SYSTEM 57 WALL CONSTRUCTION



Insulation excluded for clarity
 A range of mineral & glass wool insulations are available for different requirements

ELITE SYSTEMS

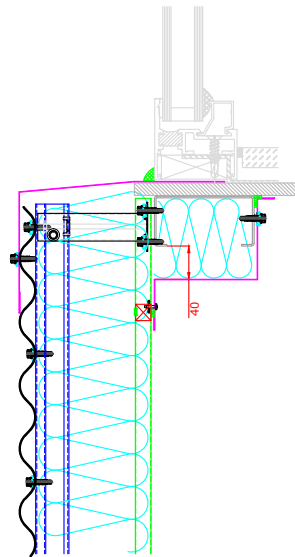


www.euroclad.com
 Tel: +44 (0)2922 010 101
 Fax: +44 (0)2922 010 122

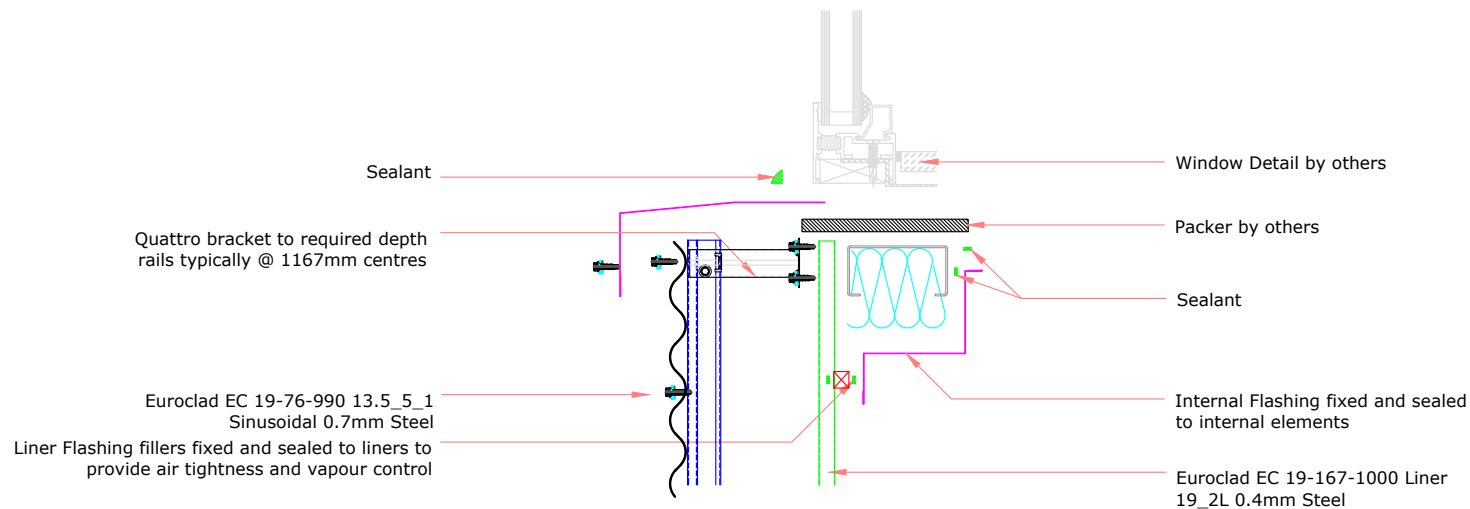
TITLE: Elite System 57
 DWG NO: E57
 DRAWN: CD
 CHECK: MP
 DATE: Jan 2020
 SCALE: NTS

This draft drawing has been supplied by Euroclad Group Ltd for the purpose of guidance free of charge. It is a suggested typical detail and as such should not be assumed suitable for any specific project or application. No responsibility is assumed for errors or misinterpretations resulting from the information contained in the drawing. Details are for illustration only and no liability is accepted. We reserve the right to change the details without notice. The drawing is copyright, it remains our property.

To be read in conjunction with Elite System specification documents



EUROCLAD ELITE SYSTEM 57 WALL CONSTRUCTION



Insulation excluded for clarity
 A range of mineral & glass wool insulations are available for different requirements

ELITE SYSTEMS

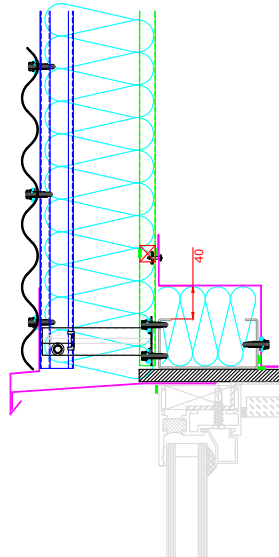


www.euroclad.com
 Tel: +44 (0)2922 010 101
 Fax: +44 (0)2922 010 122

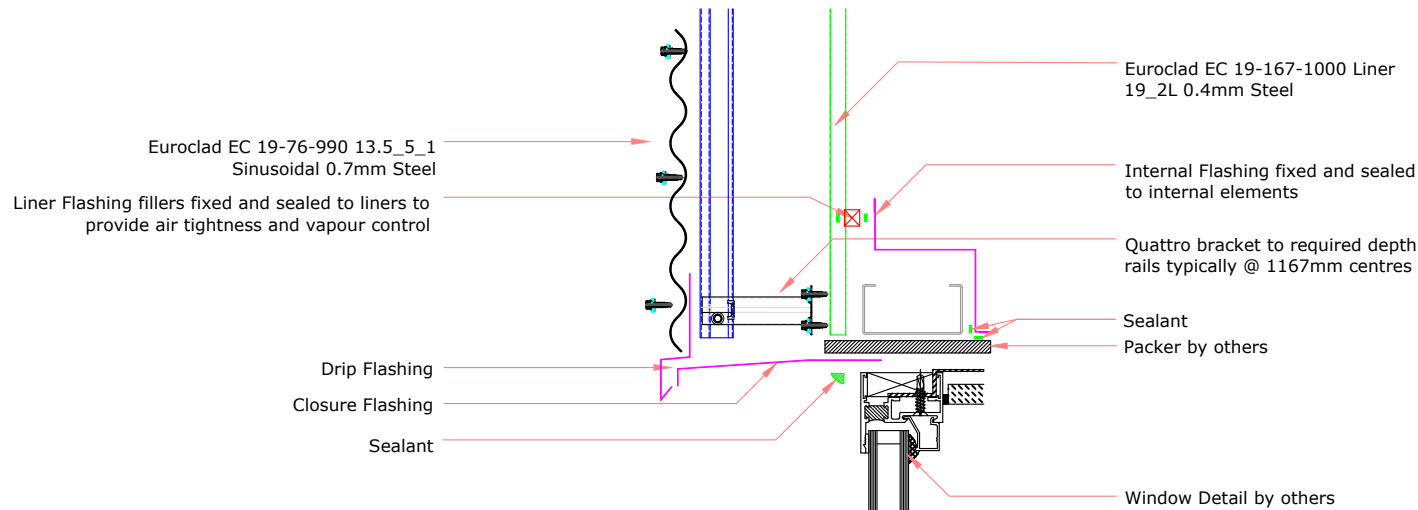
TITLE: Elite System 57
 DWG NO: E57
 DRAWN: CD
 CHECK: MP
 DATE: Jan 2020
 SCALE: NTS

This draft drawing has been supplied by Euroclad Group Ltd for the purpose of guidance free of charge. It is a suggested typical detail and as such should not be assumed suitable for any specific project or application. No responsibility is assumed for errors or misinterpretations resulting from the information contained in the drawing. Details are for illustration only and no liability is accepted. We reserve the right to change the details without notice. The drawing is copyright, it remains our property.

To be read in conjunction with Elite System specification documents



EUROCLAD ELITE SYSTEM 57 WALL CONSTRUCTION



Euroclad EC 19-76-990 13.5_5_1
 Sinusoidal 0.7mm Steel

Liner Flashing fillers fixed and sealed to liners to provide air tightness and vapour control

Drip Flashing
 Closure Flashing
 Sealant

Euroclad EC 19-167-1000 Liner
 19_2L 0.4mm Steel

Internal Flashing fixed and sealed to internal elements

Quattro bracket to required depth rails typically @ 1167mm centres

Sealant
 Packer by others

Window Detail by others

Insulation excluded for clarity
 A range of mineral & glass wool insulations are available for different requirements

ELITE SYSTEMS

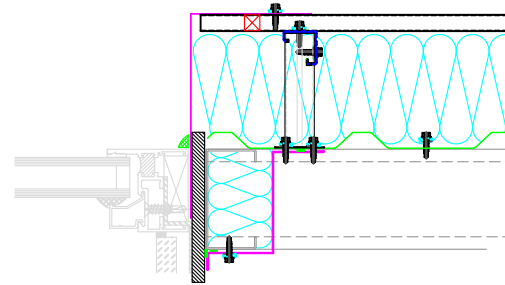


www.euroclad.com
 Tel: +44 (0)2922 010 101
 Fax: +44 (0)2922 010 122

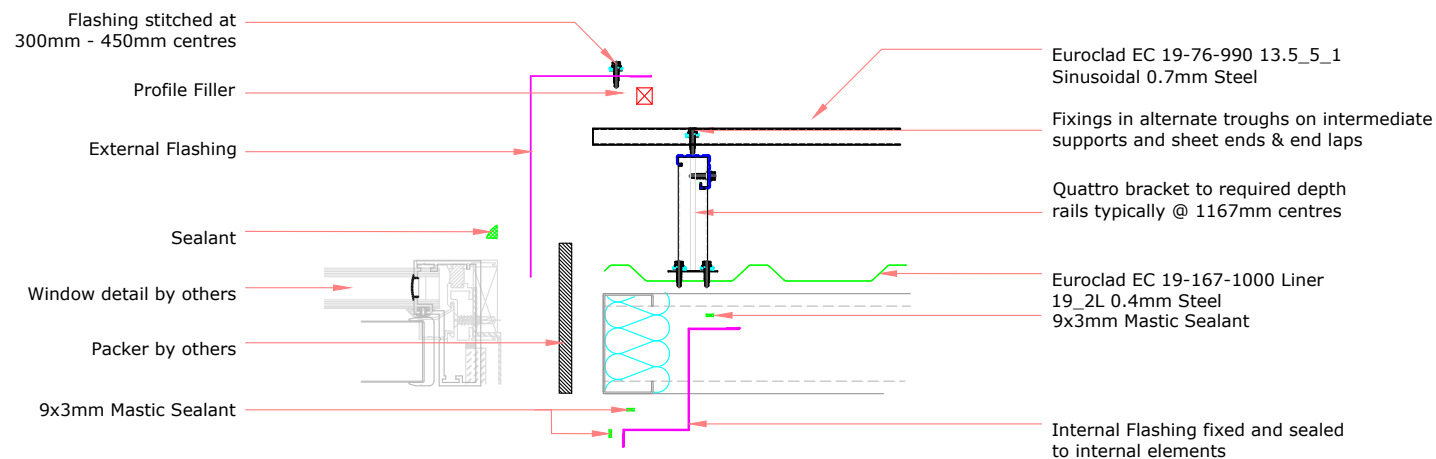
TITLE: Elite System 57
 DWG NO: E57
 DRAWN: CD
 CHECK: MP
 DATE: Jan 2020
 SCALE: NTS

This draft drawing has been supplied by Euroclad Group Ltd for the purpose of guidance free of charge. It is a suggested typical detail and as such should not be assumed suitable for any specific project or application. No responsibility is assumed for errors or misinterpretations resulting from the information contained in the drawing. Details are for illustration only and no liability is accepted. We reserve the right to change the details without notice. The drawing is copyright, it remains our property.

To be read in conjunction with Elite System specification documents



EUROCLAD ELITE SYSTEM 57 WALL CONSTRUCTION



Insulation excluded for clarity
 A range of mineral & glass wool insulations are available for different requirements