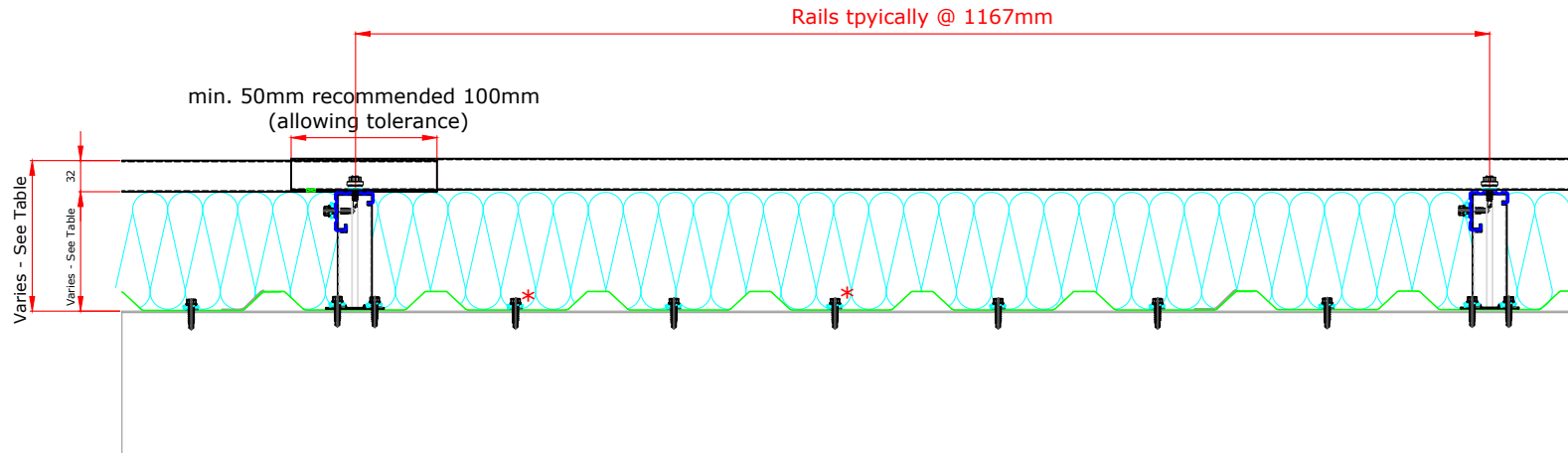


This draft drawing has been supplied by Euroclad Group Ltd for the purpose of guidance free of charge. It is a suggested typical detail and as such should not be assumed suitable for any specific project or application. No responsibility is assumed for errors or misinterpretations resulting from the information contained in the drawing. Details are for illustration only and no liability is accepted. We reserve the right to change the details without notice. The drawing is copyright, it remains our property.

To be read in conjunction with Elite System specification documents



\*Fixings with an asterisk are required on sheet ends and end laps only.

### Elite System 55

Bracket Height	Insulation Thickness	Insulation Value	Overall System Depth	U Value at 1.5M Centres
100mm	100mm	0.040	133mm	0.43
120mm	120mm	0.040	153mm	0.36
140mm	140mm	0.040	173mm	0.31
160mm	160mm	0.040	193mm	0.27
180mm	180mm	0.040	213mm	0.24
200mm	200mm	0.040	233mm	0.22
220mm	220mm	0.040	253mm	0.20

**Please Note:**

System is fire rated using Knauf Factoryclad 40 ECOSE insulation of minimum thickness 80mm with steel outer sheet only, to achieve 120 minutes Integrity, 15 minutes (min) Insulation which meets the requirements of Building Regulations Part B for external walls where fire attack is from inside the building and the wall is 1M or more from the boundary.

System can be fire rated using Rockwool insulation of minimum thickness 120mm with steel outer sheet only, with liner stitched at 300mm centres, to achieve 120 minutes Integrity, 30 minutes (min) Insulation.

Ensure roll edges are lapped/butted to ensure no gaps.

Please refer to the technical note: Installer guidance for quilt insulation in Elite Wall Systems  
Refer to Technical for advice on constructions requiring better U values than those shown.

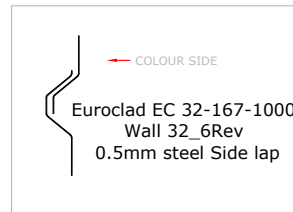
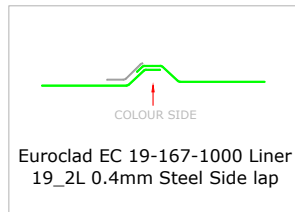
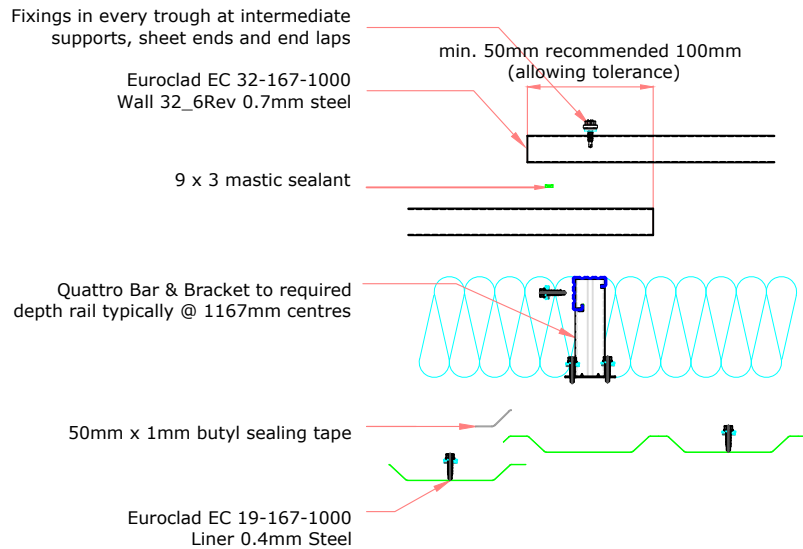
**Please Note:**

System is fire rated using Knauf Factoryclad 40 ECOSE insulation of minimum thickness 80mm with steel outer sheet only, to achieve 120 minutes Integrity, 15 minutes (min) Insulation which meets the requirements of Building Regulations Part B for external walls where fire attack is from inside the building and the wall is 1M or more from the boundary.

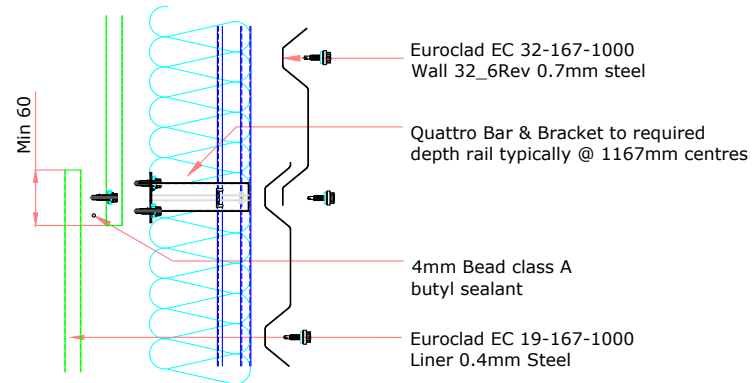
System can be fire rated using Rockwool insulation of minimum thickness 120mm with steel outer sheet only, with liner stitched at 300mm centres, to achieve 120 minutes Integrity, 30 minutes (min) Insulation.

Ensure roll edges are lapped/butted to ensure no gaps.

**ELITE SYSTEM 55 END LAP DETAIL**



**ELITE SYSTEM 55 SIDE LAP DETAIL**



**ELITE SYSTEMS**

**EUROCLAD**

www.euroclad.com  
Tel: +44 (0)2922 010 101  
Fax: +44 (0)2922 010 122

TITLE: Elite System 55  
DWG NO: E55  
DRAWN: CD  
CHECK: MP  
DATE: Jan 2020  
SCALE: NTS

This draft drawing has been supplied by Euroclad Group Ltd for the purpose of guidance free of charge. It is a suggested typical detail and as such should not be assumed suitable for any specific project or application. No responsibility is assumed for errors or misinterpretations resulting from the information contained in the drawing. Details are for illustration only and no liability is accepted. We reserve the right to change the details without notice. The drawing is copyright, it remains our property.

To be read in conjunction with Elite System specification documents

**ELITE SYSTEMS**

**EUROCLAD**

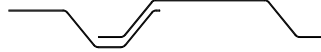
www.euroclad.com  
Tel: +44 (0)2922 010 101  
Fax: +44 (0)2922 010 122

TITLE: Elite System 55  
DWG NO: E55  
DRAWN: CD  
CHECK: MP  
DATE: Jan 2020  
SCALE: NTS

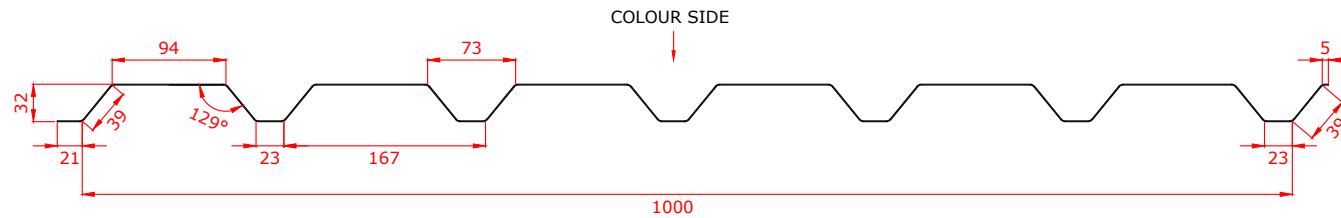
This draft drawing has been supplied by Euroclad Group Ltd for the purpose of guidance free of charge. It is a suggested typical detail and as such should not be assumed suitable for any specific project or application. No responsibility is assumed for errors or misinterpretations resulting from the information contained in the drawing. Details are for illustration only and no liability is accepted. We reserve the right to change the details without notice. The drawing is copyright, it remains our property.

To be read in conjunction with Elite System specification documents

COLOUR SIDE



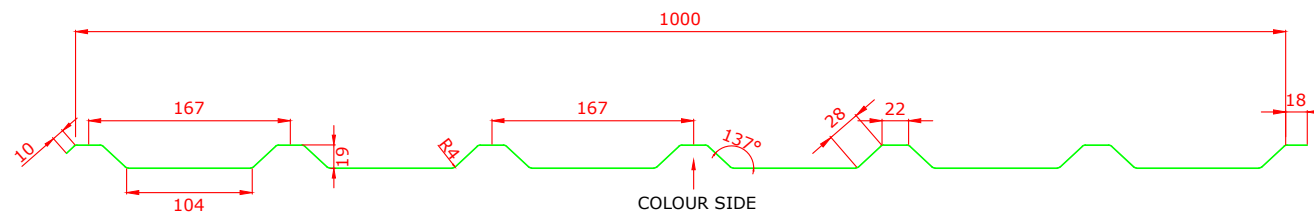
**EUROCLAD EC 32-167-1000 Wall 32\_6Rev 0.5mm  
EXTERNAL SHEET**



COLOUR SIDE

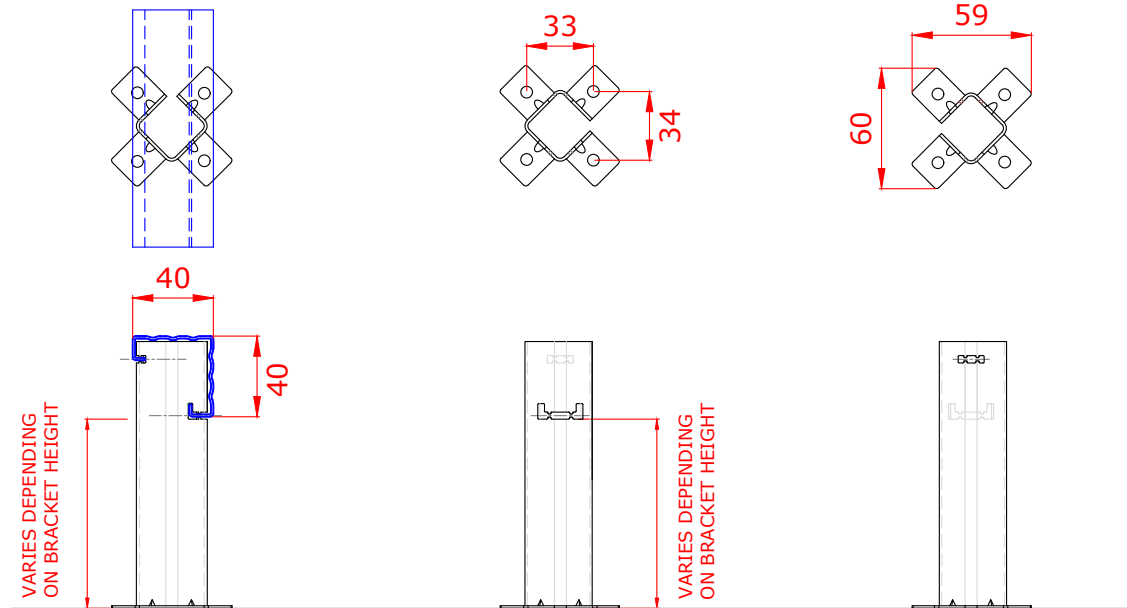
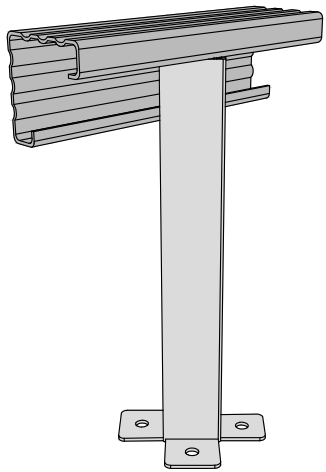


**EUROCLAD EC 19-167-1000 Liner 19\_2L 0.4mm  
LINER**

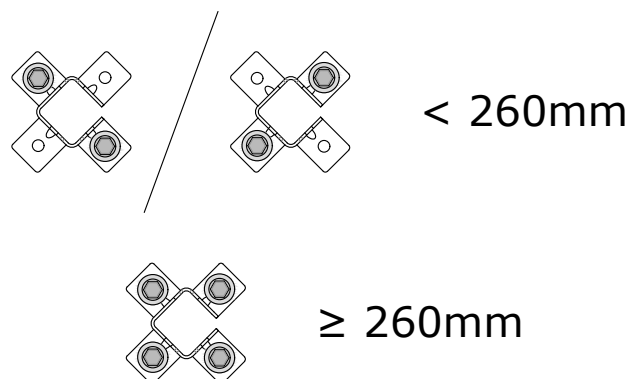


This draft drawing has been supplied by Euroclad Group Ltd for the purpose of guidance free of charge. It is a suggested typical detail and as such should not be assumed suitable for any specific project or application. No responsibility is assumed for errors or misinterpretations resulting from the information contained in the drawing. Details are for illustration only and no liability is accepted. We reserve the right to change the details without notice. The drawing is copyright, it remains our property.

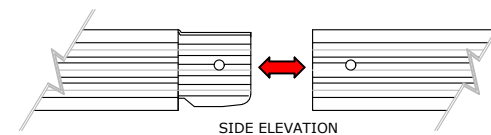
To be read in conjunction with Elite System specification documents



Brackets less than 260mm require 2 fixings diagonally opposite.  
Brackets 260mm or more require 4 fixings.



Maximum bar cantilever at free ends is 300mm.  
Spigot can fall anywhere between two brackets.



**ELITE SYSTEMS**

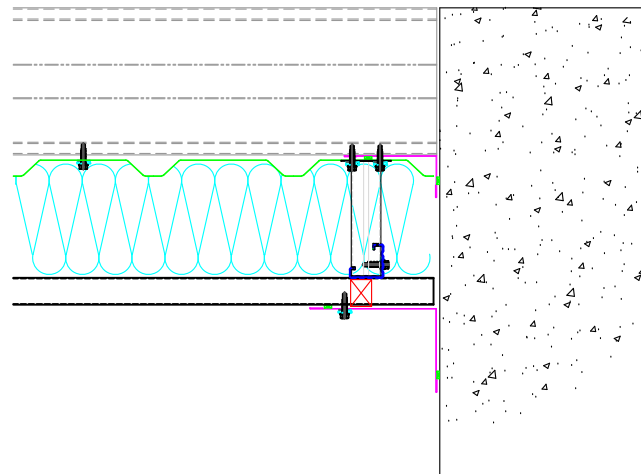
**EUROCLAD**

www.euroclad.com  
Tel: +44 (0)2922 010 101  
Fax: +44 (0)2922 010 122

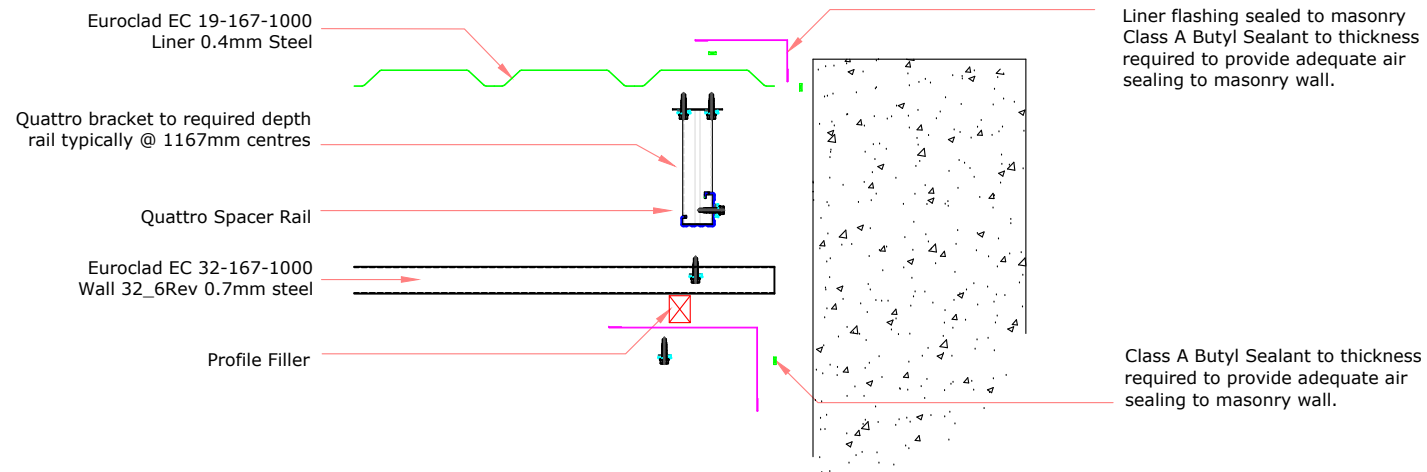
TITLE: Elite System 55  
DWG NO: E55  
DRAWN: CD  
CHECK: MP  
DATE: Jan 2020  
SCALE: NTS

This draft drawing has been supplied by Euroclad Group Ltd for the purpose of guidance free of charge. It is a suggested typical detail and as such should not be assumed suitable for any specific project or application. No responsibility is assumed for errors or misinterpretations resulting from the information contained in the drawing. Details are for illustration only and no liability is accepted. We reserve the right to change the details without notice. The drawing is copyright, it remains our property.

To be read in conjunction with Elite System specification documents



**EUROCLAD ELITE SYSTEM 55 WALL CONSTRUCTION**



Insulation excluded for clarity  
A range of mineral & glass wool insulations are available for different requirements

**ELITE SYSTEMS**

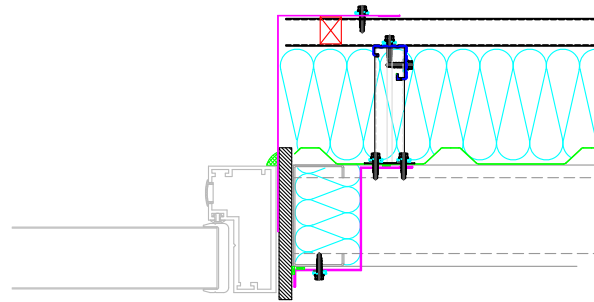


www.euroclad.com  
 Tel: +44 (0)2922 010 101  
 Fax: +44 (0)2922 010 122

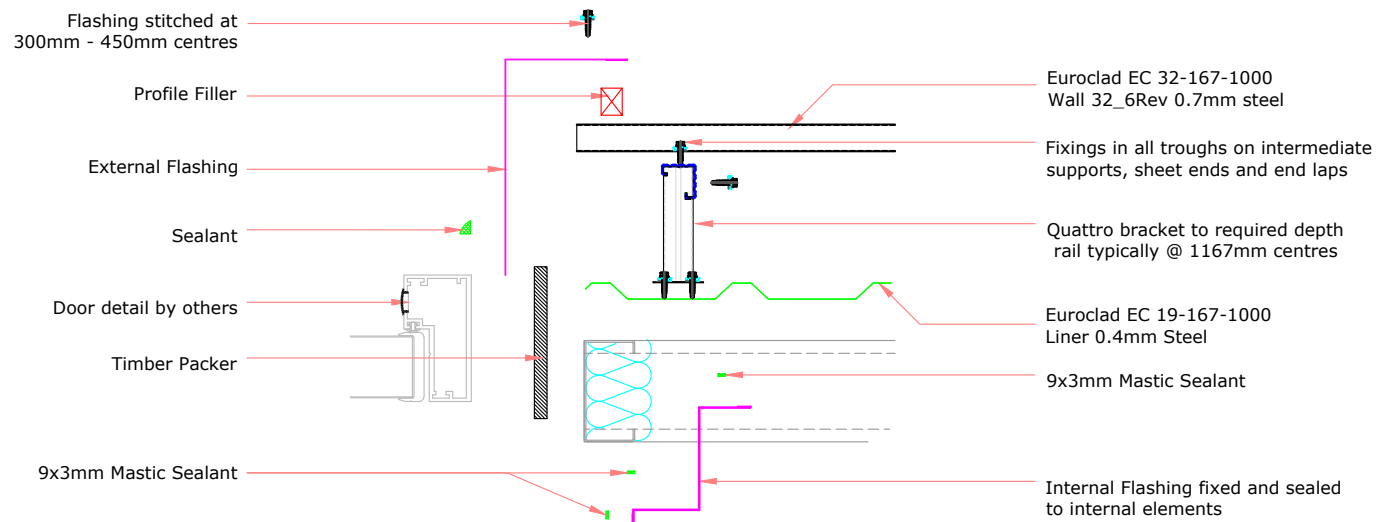
TITLE: Elite System 55  
 DWG NO: E55  
 DRAWN: CD  
 CHECK: MP  
 DATE: Jan 2020  
 SCALE: NTS

This draft drawing has been supplied by Euroclad Group Ltd for the purpose of guidance free of charge. It is a suggested typical detail and as such should not be assumed suitable for any specific project or application. No responsibility is assumed for errors or misinterpretations resulting from the information contained in the drawing. Details are for illustration only and no liability is accepted. We reserve the right to change the details without notice. The drawing is copyright, it remains our property.

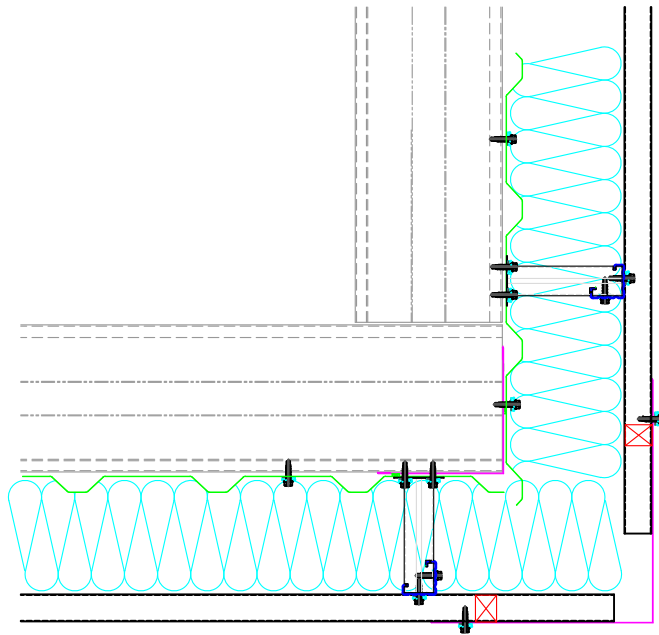
To be read in conjunction with Elite System specification documents



**EUROCLAD ELITE SYSTEM 55 WALL CONSTRUCTION**



Insulation excluded for clarity  
 A range of mineral & glass wool insulations are available for different requirements



**ELITE SYSTEMS**



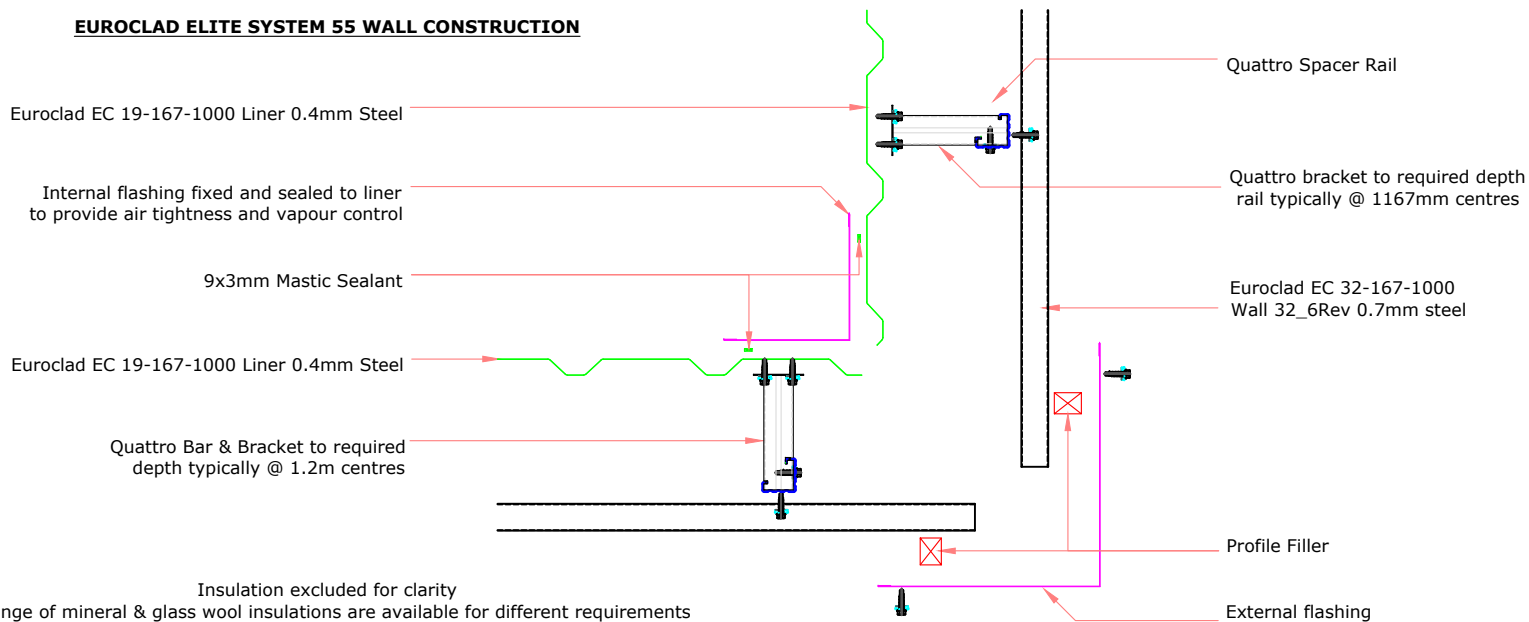
www.euroclad.com  
 Tel: +44 (0)2922 010 101  
 Fax: +44 (0)2922 010 122

TITLE: Elite System 55  
 DWG NO: E55  
 DRAWN: CD  
 CHECK: MP  
 DATE: Jan 2020  
 SCALE: NTS

This draft drawing has been supplied by Euroclad Group Ltd for the purpose of guidance free of charge. It is a suggested typical detail and as such should not be assumed suitable for any specific project or application. No responsibility is assumed for errors or misinterpretations resulting from the information contained in the drawing. Details are for illustration only and no liability is accepted. We reserve the right to change the details without notice. The drawing is copyright, it remains our property.

To be read in conjunction with Elite System specification documents

**EUROCLAD ELITE SYSTEM 55 WALL CONSTRUCTION**



**ELITE SYSTEMS**

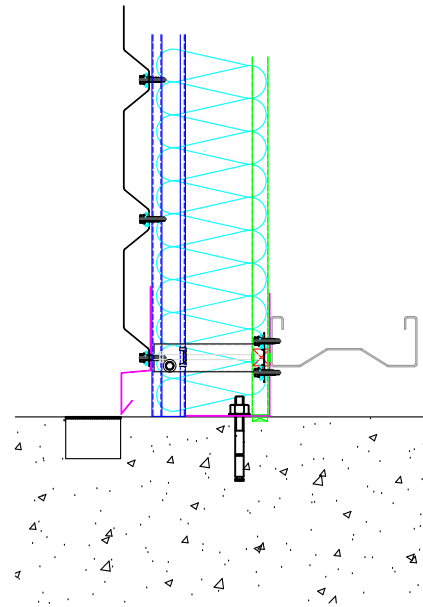


www.euroclad.com  
 Tel: +44 (0)2922 010 101  
 Fax: +44 (0)2922 010 122

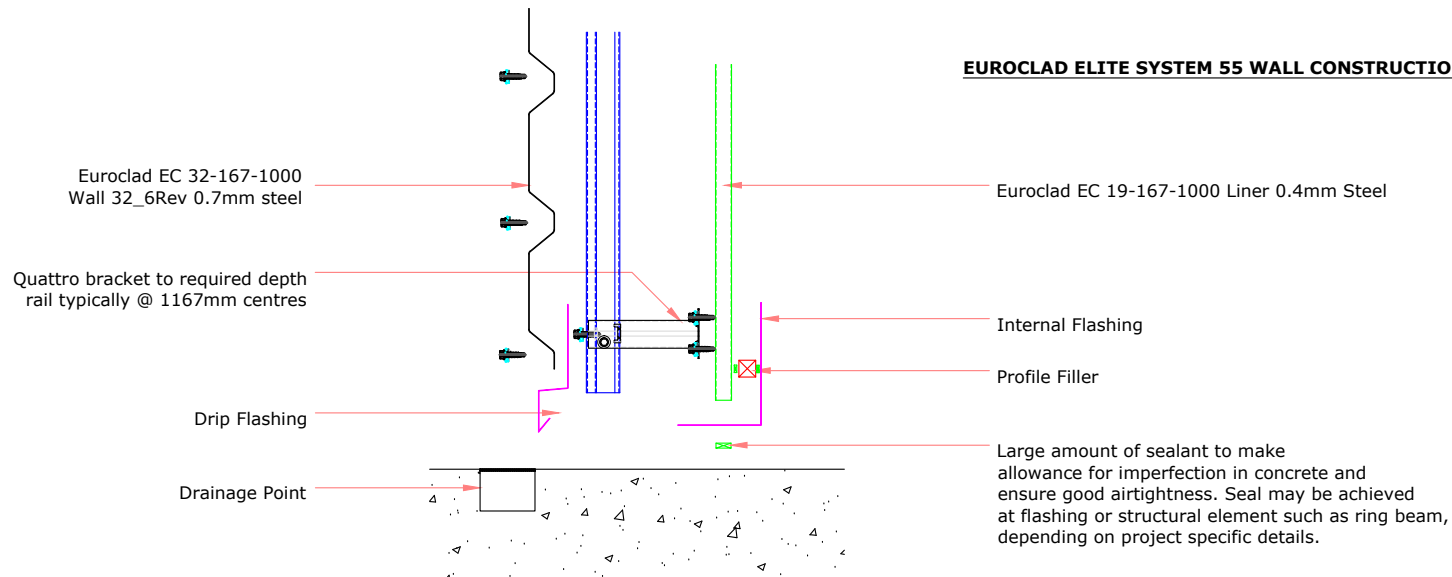
TITLE: Elite System 55  
 DWG NO: E55  
 DRAWN: CD  
 CHECK: MP  
 DATE: Jan 2020  
 SCALE: NTS

This draft drawing has been supplied by Euroclad Group Ltd for the purpose of guidance free of charge. It is a suggested typical detail and as such should not be assumed suitable for any specific project or application. No responsibility is assumed for errors or misinterpretations resulting from the information contained in the drawing. Details are for illustration only and no liability is accepted. We reserve the right to change the details without notice. The drawing is copyright, it remains our property.

To be read in conjunction with Elite System specification documents

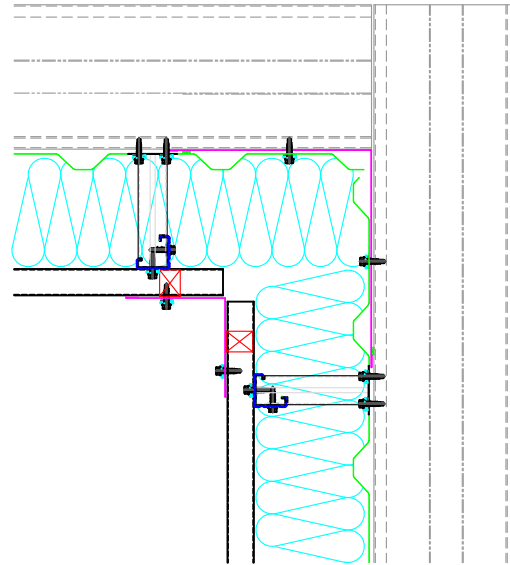


**EUROCLAD ELITE SYSTEM 55 WALL CONSTRUCTION**



Insulation excluded for clarity  
 A range of mineral & glass wool insulations are available for different requirements





**ELITE SYSTEMS**



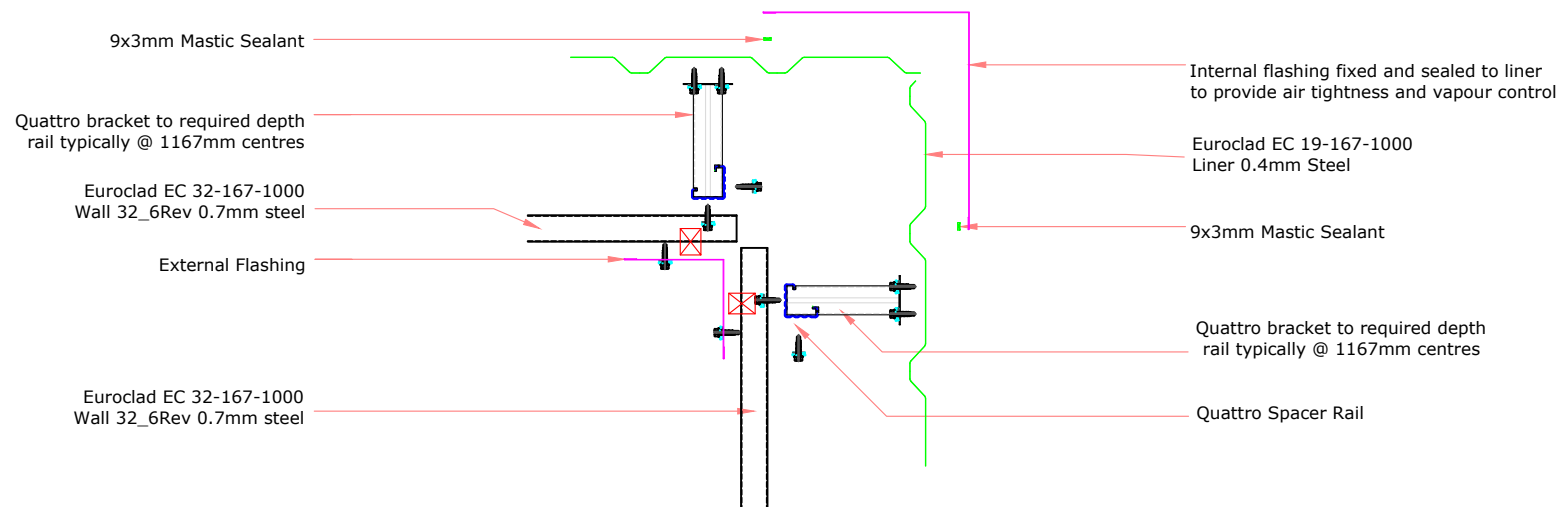
www.euroclad.com  
 Tel: +44 (0)2922 010 101  
 Fax: +44 (0)2922 010 122

TITLE: Elite System 55  
 DWG NO: E55  
 DRAWN: CD  
 CHECK: MP  
 DATE: Jan 2020  
 SCALE: NTS

This draft drawing has been supplied by Euroclad Group Ltd for the purpose of guidance free of charge. It is a suggested typical detail and as such should not be assumed suitable for any specific project or application. No responsibility is assumed for errors or misinterpretations resulting from the information contained in the drawing. Details are for illustration only and no liability is accepted. We reserve the right to change the details without notice. The drawing is copyright, it remains our property.

To be read in conjunction with Elite System specification documents

**EUROCLAD ELITE SYSTEM 55 WALL CONSTRUCTION**



Insulation excluded for clarity  
 A range of mineral & glass wool insulations are available for different requirements

**ELITE SYSTEMS**

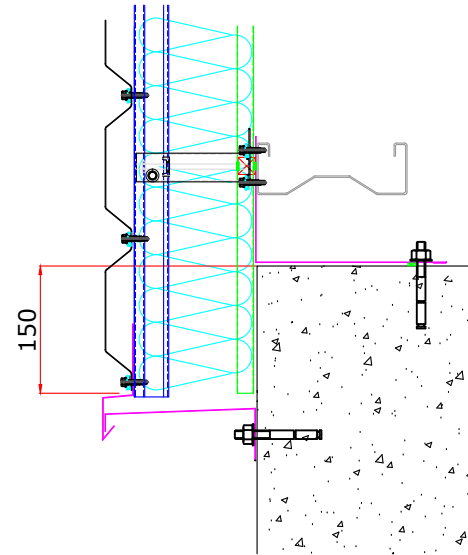


www.euroclad.com  
 Tel: +44 (0)2922 010 101  
 Fax: +44 (0)2922 010 122

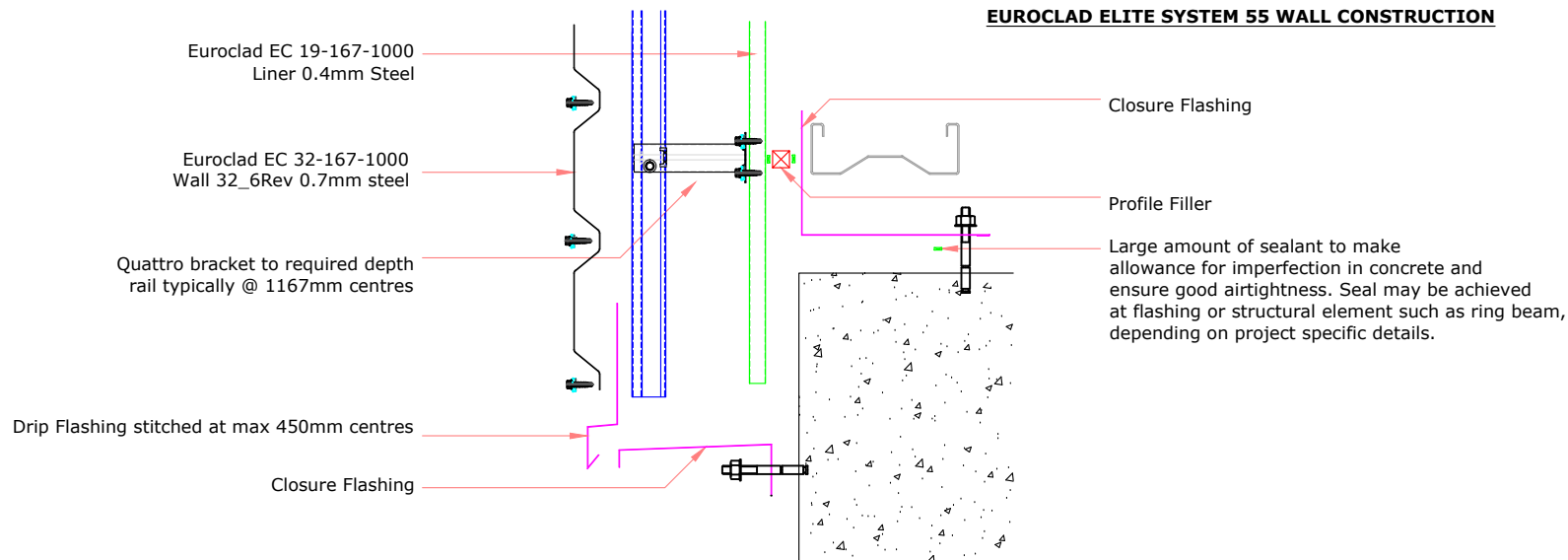
TITLE: Elite System 55  
 DWG NO: E55  
 DRAWN: CD  
 CHECK: MP  
 DATE: Jan 2020  
 SCALE: NTS

This draft drawing has been supplied by Euroclad Group Ltd for the purpose of guidance free of charge. It is a suggested typical detail and as such should not be assumed suitable for any specific project or application. No responsibility is assumed for errors or misinterpretations resulting from the information contained in the drawing. Details are for illustration only and no liability is accepted. We reserve the right to change the details without notice. The drawing is copyright, it remains our property.

To be read in conjunction with Elite System specification documents



**EUROCLAD ELITE SYSTEM 55 WALL CONSTRUCTION**



Insulation excluded for clarity  
 A range of mineral & glass wool insulations are available for different requirements

**ELITE SYSTEMS**

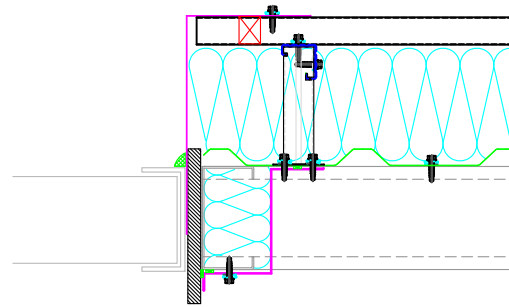


www.euroclad.com  
Tel: +44 (0)2922 010 101  
Fax: +44 (0)2922 010 122

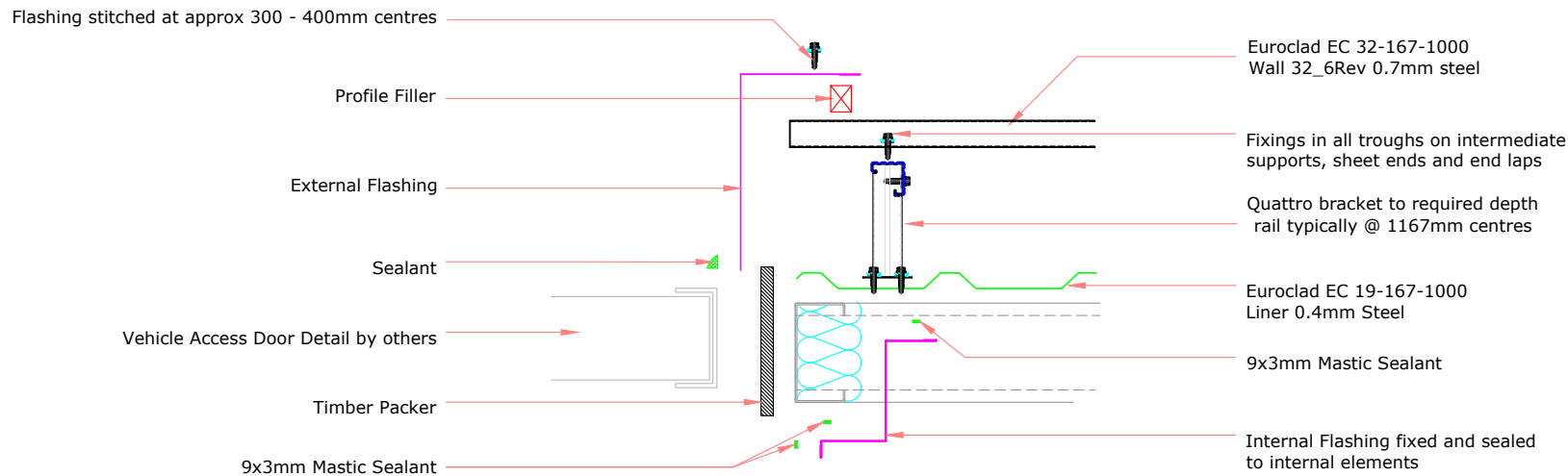
TITLE: Elite System 55  
DWG NO: E55  
DRAWN: CD  
CHECK: MP  
DATE: Jan 2020  
SCALE: NTS

This draft drawing has been supplied by Euroclad Group Ltd for the purpose of guidance free of charge. It is a suggested typical detail and as such should not be assumed suitable for any specific project or application. No responsibility is assumed for errors or misinterpretations resulting from the information contained in the drawing. Details are for illustration only and no liability is accepted. We reserve the right to change the details without notice. The drawing is copyright, it remains our property.

To be read in conjunction with Elite System specification documents



**EUROCLAD ELITE SYSTEM 55 WALL CONSTRUCTION**



**ELITE SYSTEMS**

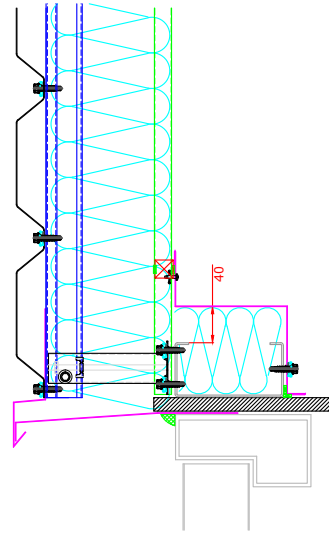
**EUROCLAD**

www.euroclad.com  
Tel: +44 (0)2922 010 101  
Fax: +44 (0)2922 010 122

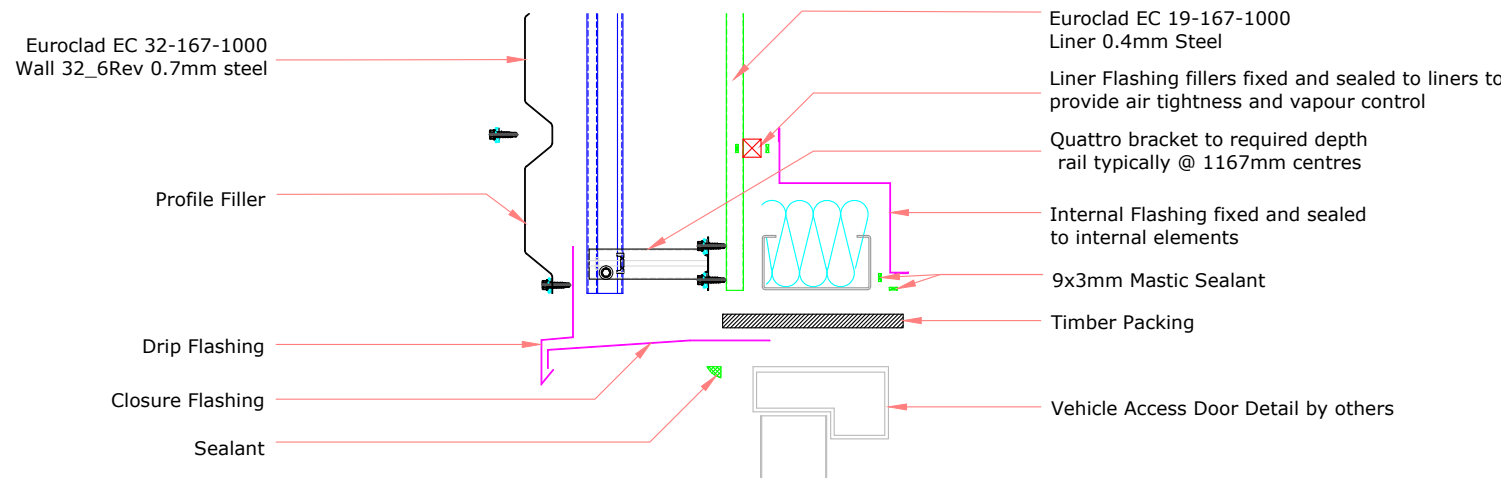
TITLE: Elite System 55  
DWG NO: E55  
DRAWN: CD  
CHECK: MP  
DATE: Jan 2020  
SCALE: NTS

This draft drawing has been supplied by Euroclad Group Ltd for the purpose of guidance free of charge. It is a suggested typical detail and as such should not be assumed suitable for any specific project or application. No responsibility is assumed for errors or misinterpretations resulting from the information contained in the drawing. Details are for illustration only and no liability is accepted. We reserve the right to change the details without notice. The drawing is copyright, it remains our property.

To be read in conjunction with Elite System specification documents



**EUROCLAD ELITE SYSTEM 55 WALL CONSTRUCTION**



Insulation excluded for clarity  
A range of mineral & glass wool insulations are available for different requirements

**ELITE SYSTEMS**

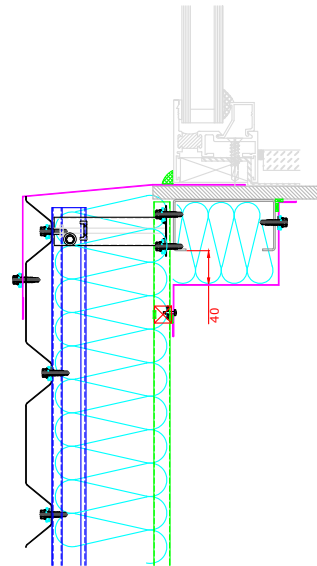


www.euroclad.com  
 Tel: +44 (0)2922 010 101  
 Fax: +44 (0)2922 010 122

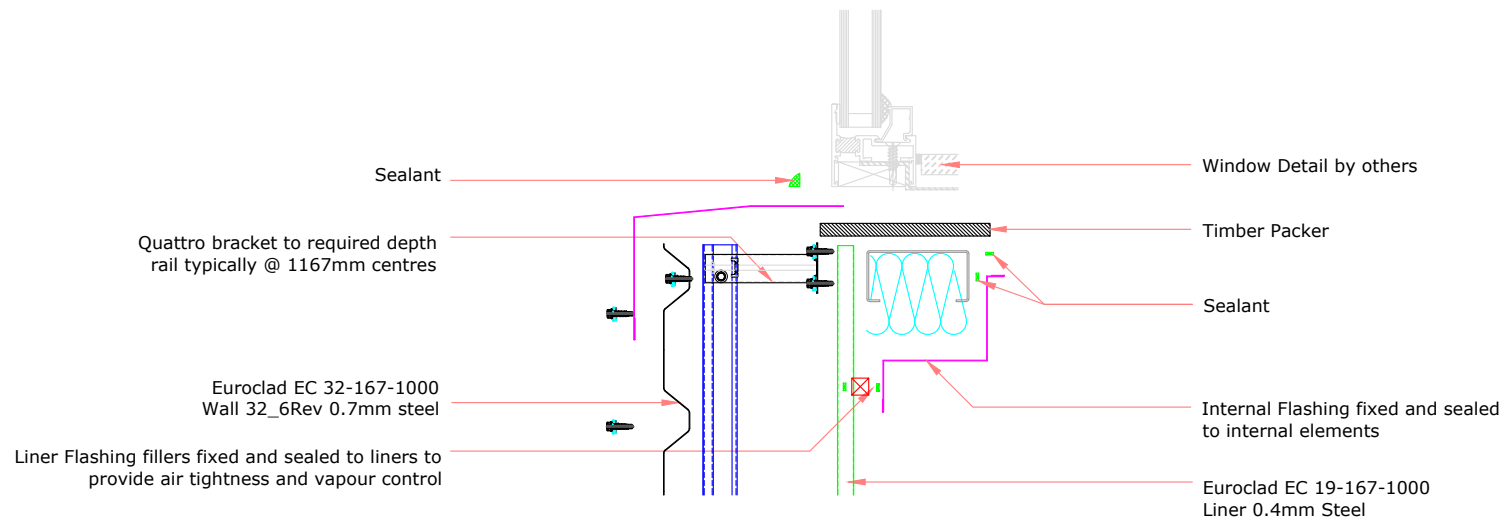
TITLE: Elite System 55  
 DWG NO: E55  
 DRAWN: CD  
 CHECK: MP  
 DATE: Jan 2020  
 SCALE: NTS

This draft drawing has been supplied by Euroclad Group Ltd for the purpose of guidance free of charge. It is a suggested typical detail and as such should not be assumed suitable for any specific project or application. No responsibility is assumed for errors or misinterpretations resulting from the information contained in the drawing. Details are for illustration only and no liability is accepted. We reserve the right to change the details without notice. The drawing is copyright, it remains our property.

To be read in conjunction with Elite System specification documents



**EUROCLAD ELITE SYSTEM 55 WALL CONSTRUCTION**



Insulation excluded for clarity  
 A range of mineral & glass wool insulations are available for different requirements

**ELITE SYSTEMS**

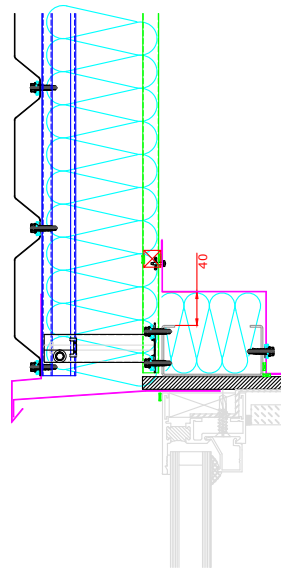


www.euroclad.com  
 Tel: +44 (0)2922 010 101  
 Fax: +44 (0)2922 010 122

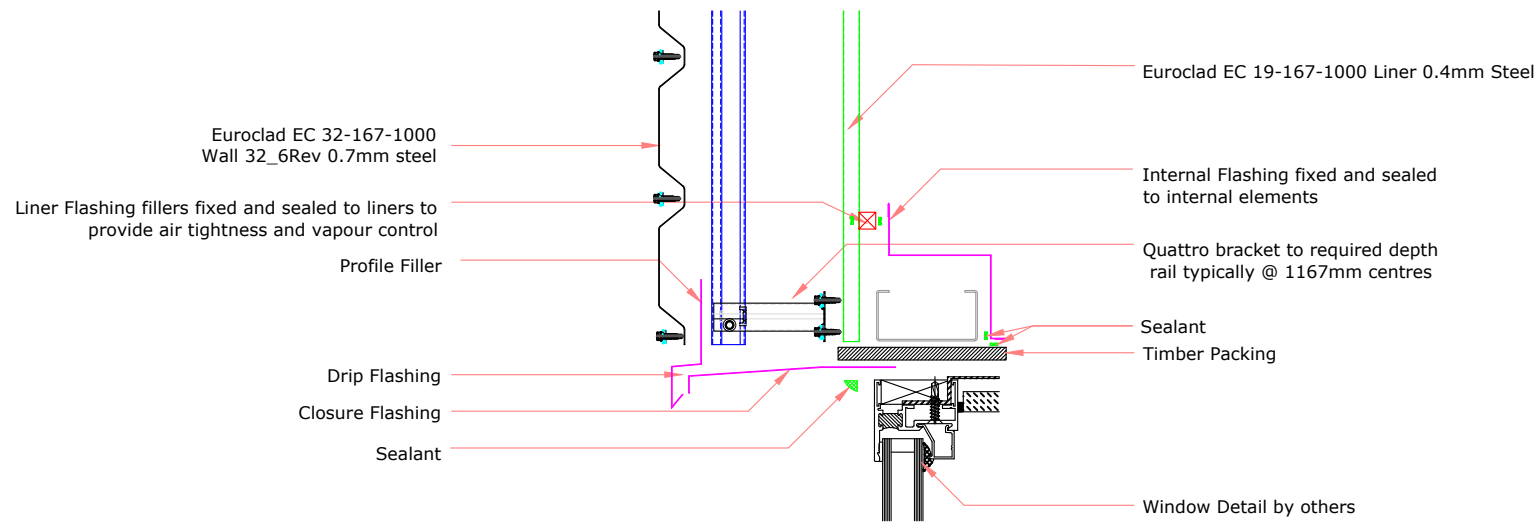
TITLE: Elite System 55  
 DWG NO: E55  
 DRAWN: CD  
 CHECK: MP  
 DATE: Jan 2020  
 SCALE: NTS

This draft drawing has been supplied by Euroclad Group Ltd for the purpose of guidance free of charge. It is a suggested typical detail and as such should not be assumed suitable for any specific project or application. No responsibility is assumed for errors or misinterpretations resulting from the information contained in the drawing. Details are for illustration only and no liability is accepted. We reserve the right to change the details without notice. The drawing is copyright, it remains our property.

To be read in conjunction with Elite System specification documents



**EUROCLAD ELITE SYSTEM 55 WALL CONSTRUCTION**



Insulation excluded for clarity  
 A range of mineral & glass wool insulations are available for different requirements

TITLE: Elite System 55

DWG NO: E55

DRAWN: CD

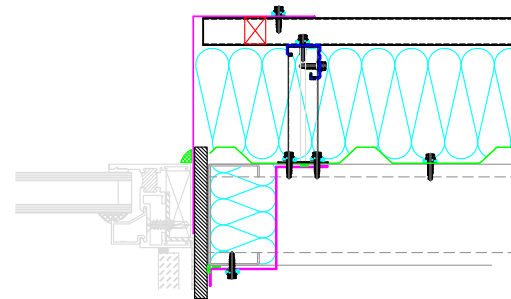
CHECK: MP

DATE: Jan 2020

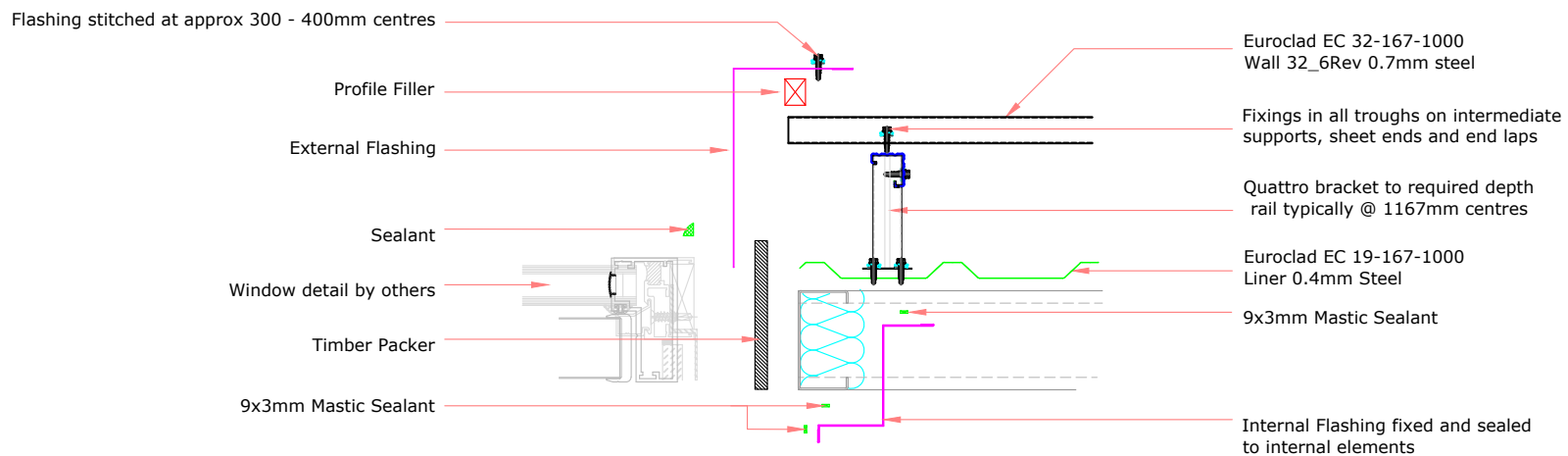
SCALE: NTS

This draft drawing has been supplied by Euroclad Group Ltd for the purpose of guidance free of charge. It is a suggested typical detail and as such should not be assumed suitable for any specific project or application. No responsibility is assumed for errors or misinterpretations resulting from the information contained in the drawing. Details are for illustration only and no liability is accepted. We reserve the right to change the details without notice. The drawing is copyright, it remains our property.

To be read in conjunction with Elite System specification documents



**EUROCLAD ELITE SYSTEM 55 WALL CONSTRUCTION**



Insulation excluded for clarity  
A range of mineral & glass wool insulations are available for different requirements