

TITLE: Elite System 51

DWG NO: E51

DRAWN: CD

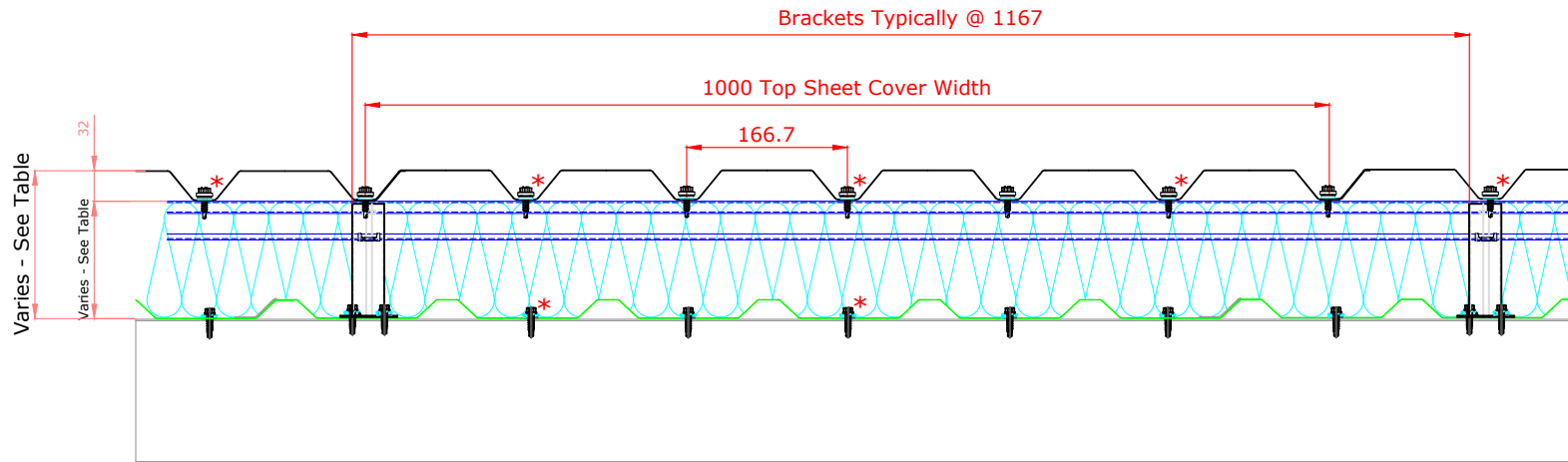
CHECK: MP

DATE: Jan 2020

SCALE: NTS

This draft drawing has been supplied by Euroclad Group Ltd for the purpose of guidance free of charge. It is a suggested typical detail and as such should not be assumed suitable for any specific project or application. No responsibility is assumed for errors or misinterpretations resulting from the information contained in the drawing. Details are for illustration only and no liability is accepted. We reserve the right to change the details without notice. The drawing is copyright, it remains our property.

To be read in conjunction with Elite System specification documents



*Fixings with an asterisk are required on sheet ends and end laps only.

Elite System 51

Bracket Height	Insulation Thickness	Insulation Value	Overall System Depth	U Value at 1.8M Centres
120mm	120mm	0.040	153mm	0.35
140mm	140mm	0.040	173mm	0.30
150mm	150mm*/160mm	0.040	183mm	0.28
160mm	160mm	0.040	193mm	0.27
170mm	180mm	0.040	203mm	0.25
180mm	180mm	0.040	213mm	0.24
200mm	200mm	0.040	233mm	0.21
220mm	220mm	0.040	253mm	0.20
240mm	240mm	0.040	273mm	0.18
260mm	260mm	0.040	293mm	0.17
280mm	280mm	0.040	313mm	0.15
300mm	300mm	0.040	333mm	0.14

* Only available in Rockwool Cladding Roll

Please Note:

System is fire rated using Knauf Factoryclad 40 ECOSE insulation of minimum thickness 80mm with steel outer sheet only, to achieve 120 minutes Integrity, 15 minutes (min) Insulation which meets the requirements of Building Regulations Part B for external walls where fire attack is from inside the building and the wall is 1M or more from the boundary.

System can be fire rated using Rockwool insulation of minimum thickness 120mm with steel outer sheet only, with liner stitched at 300mm centres, to achieve 120 minutes Integrity, 30 minutes (min) Insulation.

Ensure roll edges are lapped/butted to ensure no gaps.

Please Note:

System is fire rated using Knauf Factoryclad 40 ECOSE insulation of minimum thickness 80mm with steel outer sheet only, to achieve 120 minutes Integrity, 15 minutes (min) Insulation which meets the requirements of Building Regulations Part B for external walls where fire attack is from inside the building and the wall is 1M or more from the boundary.

System can be fire rated using Rockwool insulation of minimum thickness 120mm with steel outer sheet only, with liner stitched at 300mm centres, to achieve 120 minutes Integrity, 30 minutes (min) Insulation.

Ensure roll edges are lapped/butted to ensure no gaps.

ELITE SYSTEMS



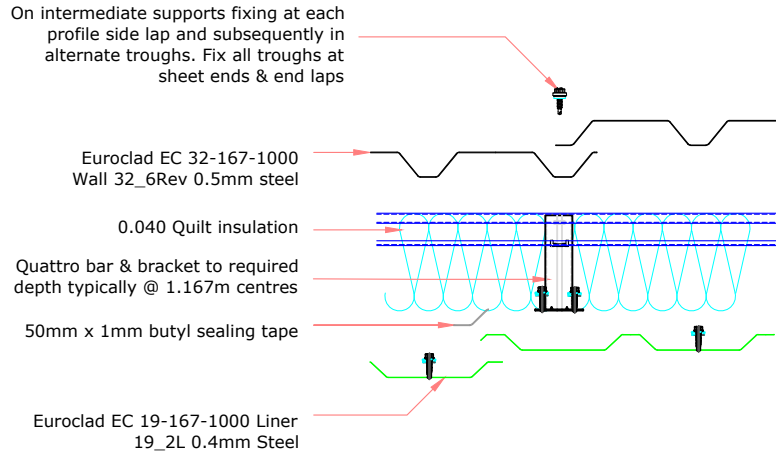
www.euroclad.com
Tel: +44 (0)2922 010 101
Fax: +44 (0)2922 010 122

TITLE: Elite System 51
DWG NO: E51
DRAWN: CD
CHECK: MP
DATE: Jan 2020
SCALE: NTS

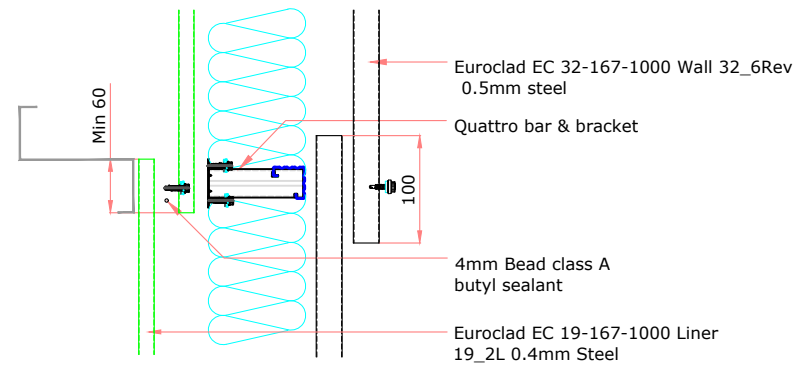
This draft drawing has been supplied by Euroclad Group Ltd for the purpose of guidance free of charge. It is a suggested typical detail and as such should not be assumed suitable for any specific project or application. No responsibility is assumed for errors or misinterpretations resulting from the information contained in the drawing. Details are for illustration only and no liability is accepted. We reserve the right to change the details without notice. The drawing is copyright, it remains our property.

To be read in conjunction with Elite System specification documents

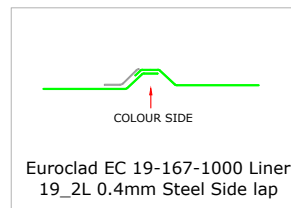
ELITE SYSTEM 51 SIDE LAP DETAIL



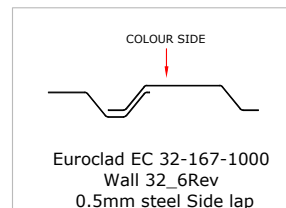
ELITE SYSTEM 51 END LAP DETAIL



STANDARD LAP DETAIL



STANDARD LAP DETAIL



ELITE SYSTEMS

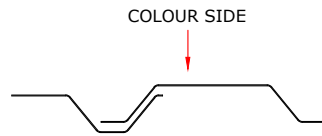
EUROCLAD

www.euroclad.com
Tel: +44 (0)2922 010 101
Fax: +44 (0)2922 010 122

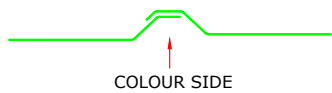
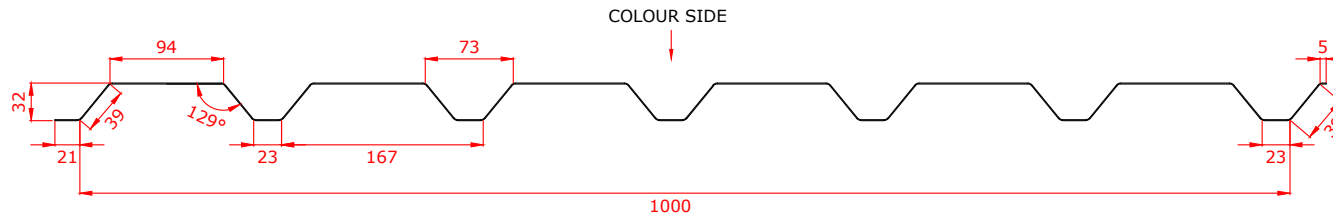
TITLE: Elite System 51
DWG NO: E51
DRAWN: CD
CHECK: MP
DATE: Jan 2020
SCALE: NTS

This draft drawing has been supplied by Euroclad Group Ltd for the purpose of guidance free of charge. It is a suggested typical detail and as such should not be assumed suitable for any specific project or application. No responsibility is assumed for errors or misinterpretations resulting from the information contained in the drawing. Details are for illustration only and no liability is accepted. We reserve the right to change the details without notice. The drawing is copyright, it remains our property.

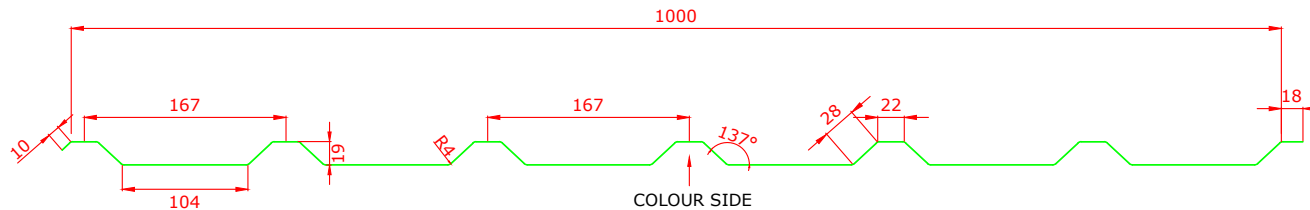
To be read in conjunction with Elite System specification documents



**EUROCLAD EC 32-167-1000 Wall 32_6Rev 0.5mm
EXTERNAL SHEET**

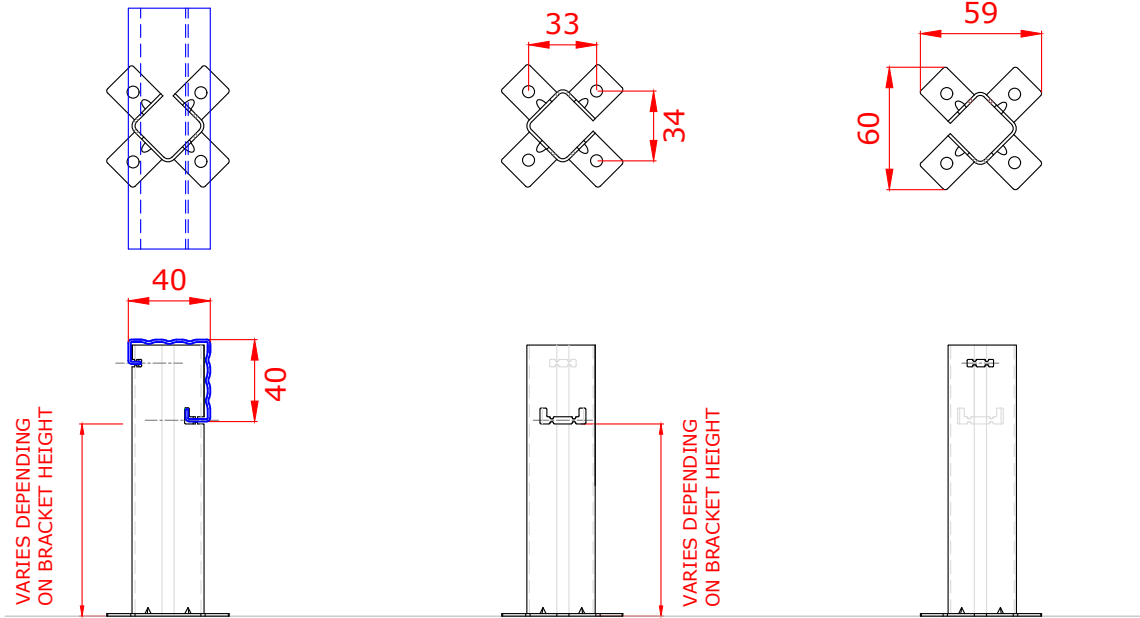
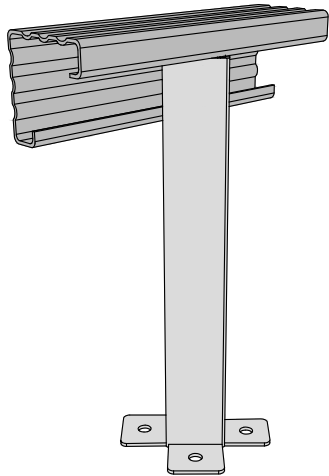


**EUROCLAD EC 19-167-1000 Liner 19_2L 0.4mm
LINER**

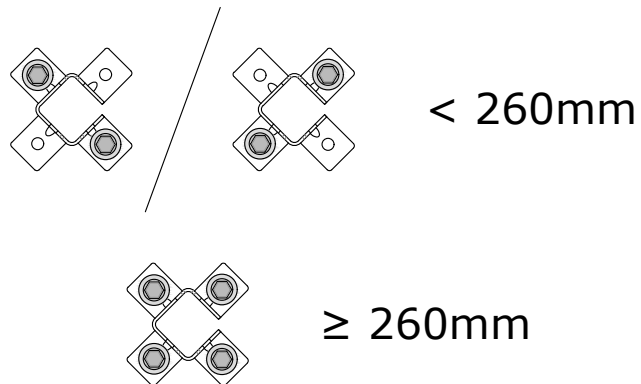


This draft drawing has been supplied by Euroclad Group Ltd for the purpose of guidance free of charge. It is a suggested typical detail and as such should not be assumed suitable for any specific project or application. No responsibility is assumed for errors or misinterpretations resulting from the information contained in the drawing. Details are for illustration only and no liability is accepted. We reserve the right to change the details without notice. The drawing is copyright, it remains our property.

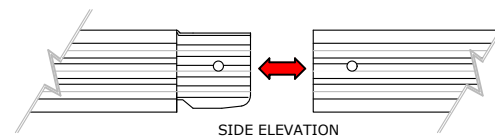
To be read in conjunction with Elite System specification documents

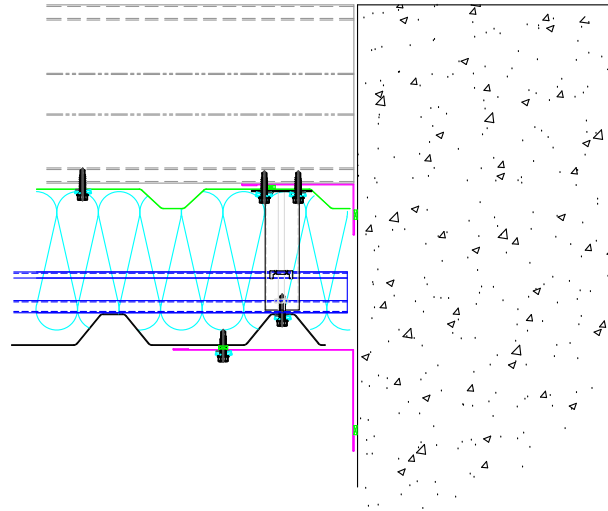


Brackets less than 260mm require 2 fixings diagonally opposite.
Brackets 260mm or more require 4 fixings.



Maximum bar cantilever at free ends is 300mm.
Spigot can fall anywhere between two brackets.





ELITE SYSTEMS



www.euroclad.com
 Tel: +44 (0)2922 010 101
 Fax: +44 (0)2922 010 122

TITLE: Elite System 51
 DWG NO: E51
 DRAWN: CD
 CHECK: MP
 DATE: Jan 2020
 SCALE: NTS

This draft drawing has been supplied by Euroclad Group Ltd for the purpose of guidance free of charge. It is a suggested typical detail and as such should not be assumed suitable for any specific project or application. No responsibility is assumed for errors or misinterpretations resulting from the information contained in the drawing. Details are for illustration only and no liability is accepted. We reserve the right to change the details without notice. The drawing is copyright, it remains our property.

To be read in conjunction with Elite System specification documents

EUROCLAD ELITE SYSTEM 51 WALL CONSTRUCTION

Quattro Bracket to required depth typically @ 1167mm centres

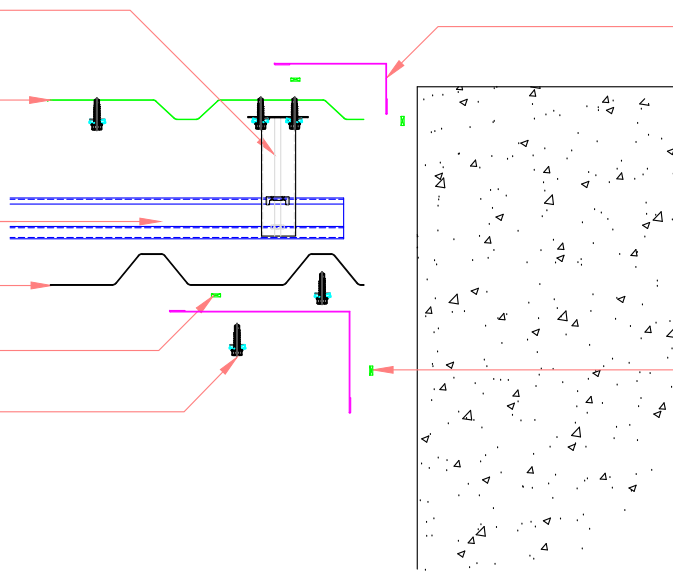
Euroclad EC 19-167-1000 Liner 19_2L 0.4mm Steel

Quattro Spacer Rail

Euroclad EC 32-167-1000 Wall 32_6Rev 0.5mm steel

9 x 3mm Class A Butyl Sealant

Flashing stitched at max 450mm centres



Liner flashing sealed to masonry
 Class A Butyl Sealant to thickness required to provide adequate air sealing to masonry wall.

Class A Butyl Sealant to thickness required to provide adequate air sealing to masonry wall.

ELITE SYSTEMS

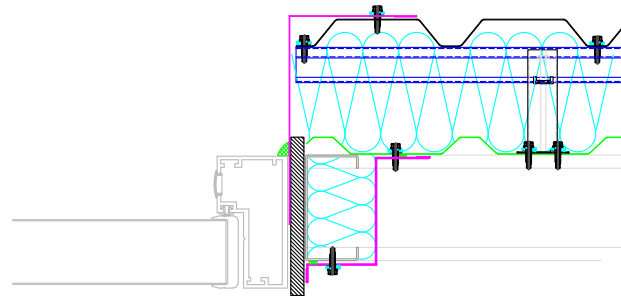


www.euroclad.com
 Tel: +44 (0)2922 010 101
 Fax: +44 (0)2922 010 122

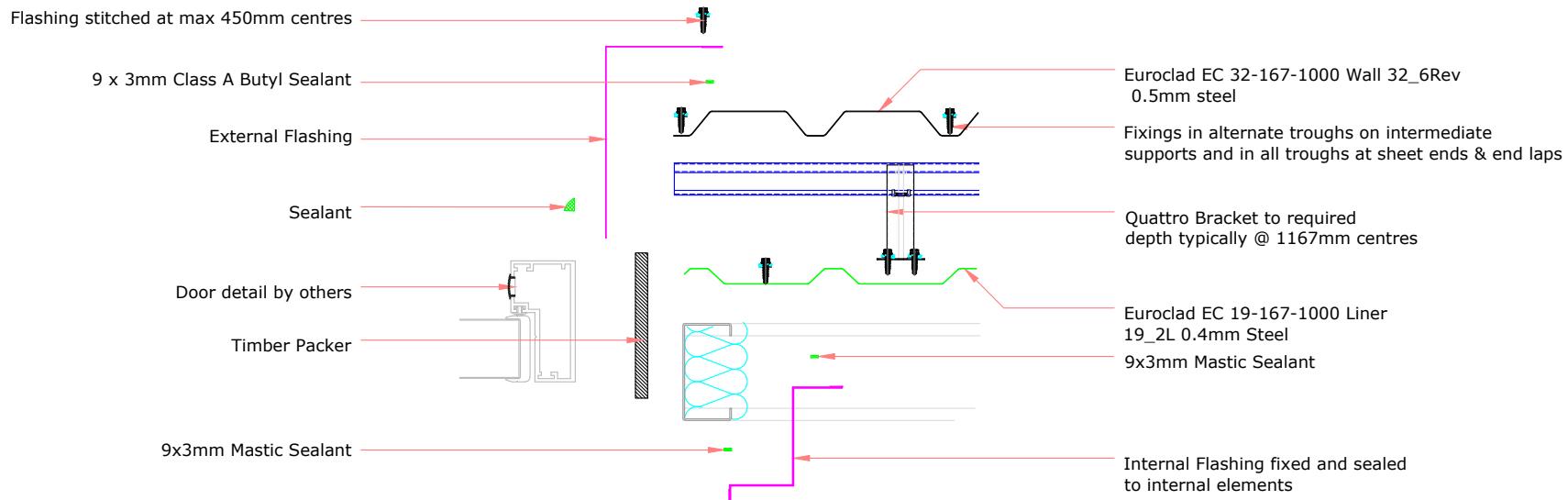
TITLE: Elite System 51
 DWG NO: E51
 DRAWN: CD
 CHECK: MP
 DATE: Jan 2020
 SCALE: NTS

This draft drawing has been supplied by Euroclad Group Ltd for the purpose of guidance free of charge. It is a suggested typical detail and as such should not be assumed suitable for any specific project or application. No responsibility is assumed for errors or misinterpretations resulting from the information contained in the drawing. Details are for illustration only and no liability is accepted. We reserve the right to change the details without notice. The drawing is copyright, it remains our property.

To be read in conjunction with Elite System specification documents



EUROCLAD ELITE SYSTEM 51 WALL CONSTRUCTION



Insulation excluded for clarity
 A range of mineral & glass wool insulations are available for different requirements

ELITE SYSTEMS

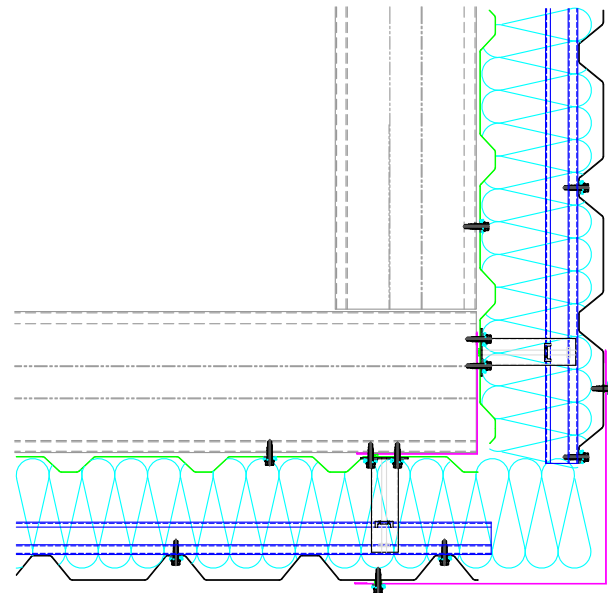


www.euroclad.com
 Tel: +44 (0)2922 010 101
 Fax: +44 (0)2922 010 122

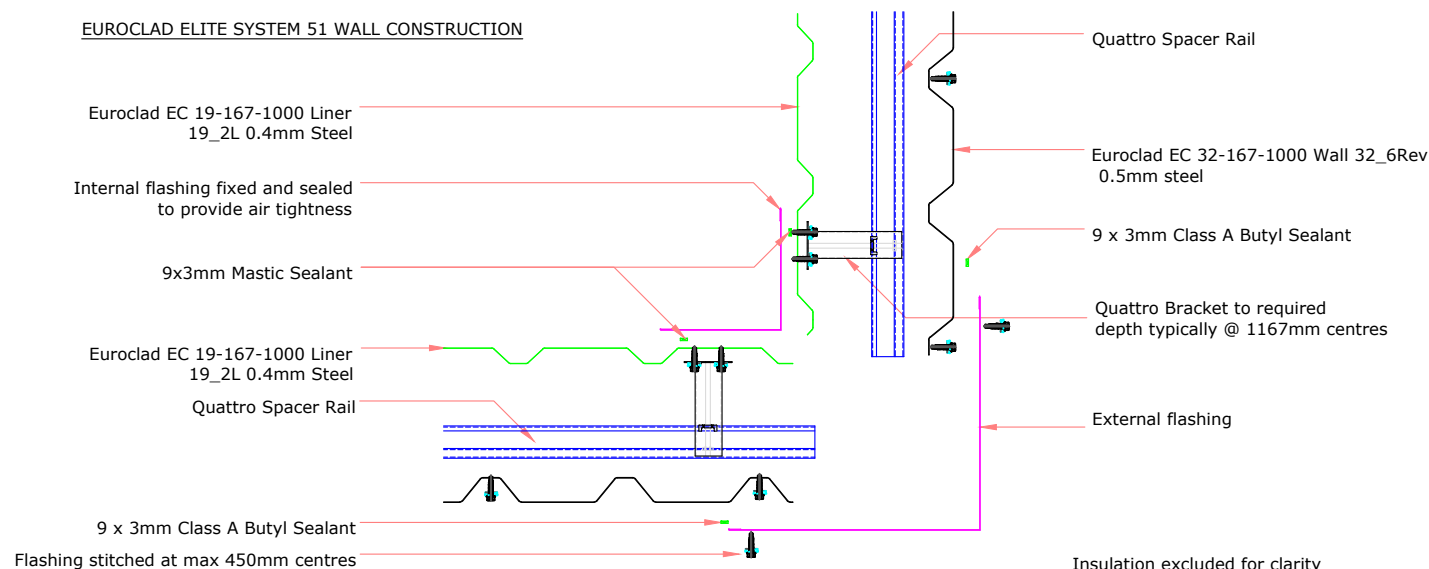
TITLE: Elite System 51
 DWG NO: E51
 DRAWN: CD
 CHECK: MP
 DATE: Jan 2020
 SCALE: NTS

This draft drawing has been supplied by Euroclad Group Ltd for the purpose of guidance free of charge. It is a suggested typical detail and as such should not be assumed suitable for any specific project or application. No responsibility is assumed for errors or misinterpretations resulting from the information contained in the drawing. Details are for illustration only and no liability is accepted. We reserve the right to change the details without notice. The drawing is copyright, it remains our property.

To be read in conjunction with Elite System specification documents



EUROCLAD ELITE SYSTEM 51 WALL CONSTRUCTION



Insulation excluded for clarity
 A range of mineral & glass wool insulations are available for different requirements

ELITE SYSTEMS

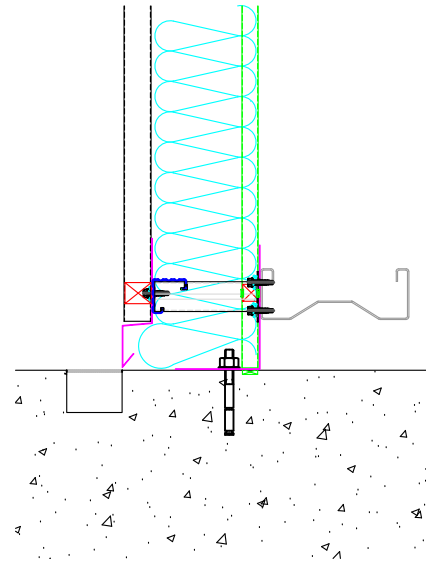


www.euroclad.com
 Tel: +44 (0)2922 010 101
 Fax: +44 (0)2922 010 122

TITLE: Elite System 51
 DWG NO: E51
 DRAWN: CD
 CHECK: MP
 DATE: Jan 2020
 SCALE: NTS

This draft drawing has been supplied by Euroclad Group Ltd for the purpose of guidance free of charge. It is a suggested typical detail and as such should not be assumed suitable for any specific project or application. No responsibility is assumed for errors or misinterpretations resulting from the information contained in the drawing. Details are for illustration only and no liability is accepted. We reserve the right to change the details without notice. The drawing is copyright, it remains our property.

To be read in conjunction with Elite System specification documents



EUROCLAD ELITE SYSTEM 51 WALL CONSTRUCTION

Euroclad EC 32-167-1000 Wall 32_6Rev
 0.5mm steel

Quattro Bracket to required
 depth typically @ 1167mm centres

Profile Filler

Drip Flashing

Drainage Point

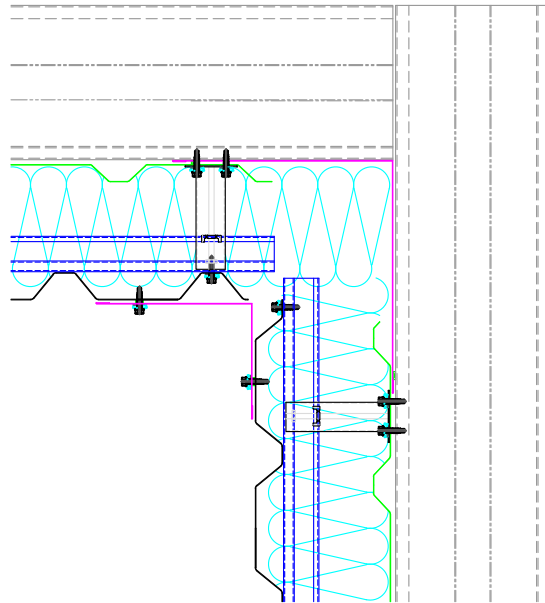
Euroclad EC 19-167-1000 Liner
 19_2L 0.4mm Steel

Internal Flashing and profile filler sealed to liner

Large amount of sealant to make allowance for imperfection in concrete and ensure good airtightness. Seal may be achieved at flashing or structural element such as ring beam, depending on project specific details.

Insulation excluded for clarity

A range of mineral & glass wool insulations are available for different requirements



ELITE SYSTEMS



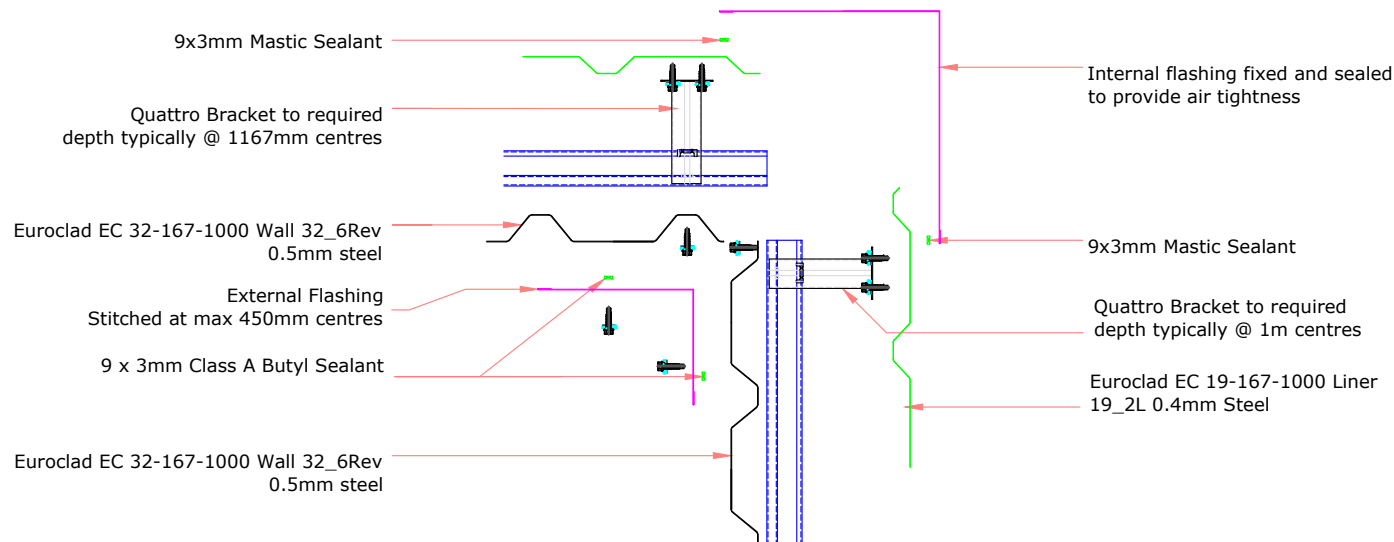
www.euroclad.com
 Tel: +44 (0)2922 010 101
 Fax: +44 (0)2922 010 122

TITLE: Elite System 51
 DWG NO: E51
 DRAWN: CD
 CHECK: MP
 DATE: Jan 2020
 SCALE: NTS

This draft drawing has been supplied by Euroclad Group Ltd for the purpose of guidance free of charge. It is a suggested typical detail and as such should not be assumed suitable for any specific project or application. No responsibility is assumed for errors or misinterpretations resulting from the information contained in the drawing. Details are for illustration only and no liability is accepted. We reserve the right to change the details without notice. The drawing is copyright, it remains our property.

To be read in conjunction with Elite System specification documents

EUROCLAD ELITE SYSTEM 51 WALL CONSTRUCTION



9x3mm Mastic Sealant

Quattro Bracket to required depth typically @ 1167mm centres

Euroclad EC 32-167-1000 Wall 32_6Rev 0.5mm steel

External Flashing Stitched at max 450mm centres

9 x 3mm Class A Butyl Sealant

Euroclad EC 32-167-1000 Wall 32_6Rev 0.5mm steel

Internal flashing fixed and sealed to provide air tightness

9x3mm Mastic Sealant

Quattro Bracket to required depth typically @ 1m centres

Euroclad EC 19-167-1000 Liner 19_2L 0.4mm Steel

Insulation excluded for clarity

A range of mineral & glass wool insulations are available for different requirements

ELITE SYSTEMS

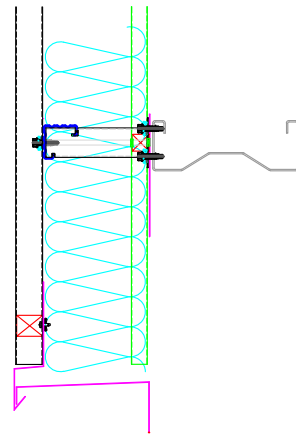


www.euroclad.com
 Tel: +44 (0)2922 010 101
 Fax: +44 (0)2922 010 122

TITLE: Elite System 51
 DWG NO: E51
 DRAWN: CD
 CHECK: MP
 DATE: Jan 2020
 SCALE: NTS

This draft drawing has been supplied by Euroclad Group Ltd for the purpose of guidance free of charge. It is a suggested typical detail and as such should not be assumed suitable for any specific project or application. No responsibility is assumed for errors or misinterpretations resulting from the information contained in the drawing. Details are for illustration only and no liability is accepted. We reserve the right to change the details without notice. The drawing is copyright, it remains our property.

To be read in conjunction with Elite System specification documents



EUROCLAD ELITE SYSTEM 51 WALL CONSTRUCTION

Euroclad EC 32-167-1000 Wall 32_6Rev
 0.5mm steel
 Euroclad EC 19-167-1000 Liner
 19_2L 0.4mm Steel

Quattro Bracket to required
 depth typically @ 1167mm centres

Profile Filler

Drip Flashing

Closure Flashing

Closure Flashing fixed and profile filler
 sealed to liner to provide air tightness

Large amount of sealant to make
 allowance for imperfection in concrete and
 ensure good airtightness. Seal may be achieved
 at flashing or structural element such as ring beam,
 depending on project specific details.

Insulation excluded for clarity
 A range of mineral & glass wool insulations are available for different requirements

ELITE SYSTEMS

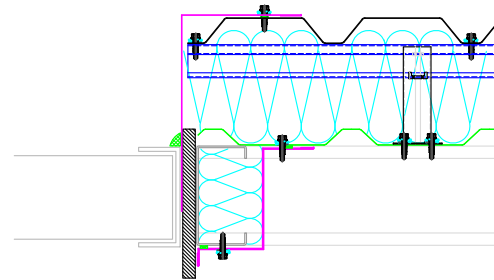


www.euroclad.com
 Tel: +44 (0)2922 010 101
 Fax: +44 (0)2922 010 122

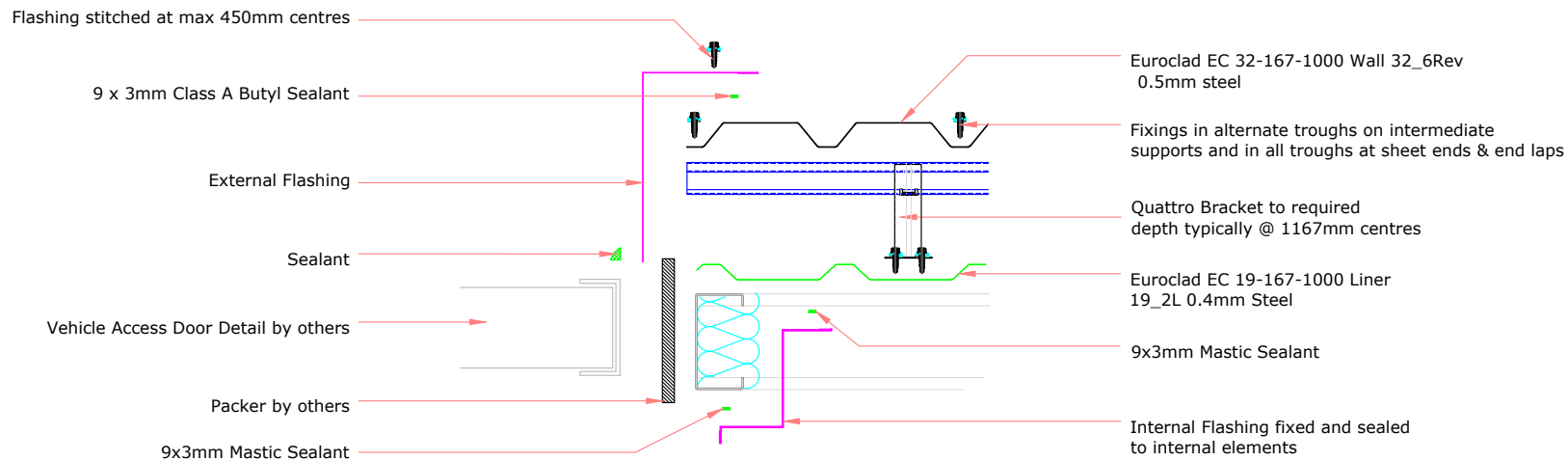
TITLE: Elite System 51
 DWG NO: E51
 DRAWN: CD
 CHECK: MP
 DATE: Jan 2020
 SCALE: NTS

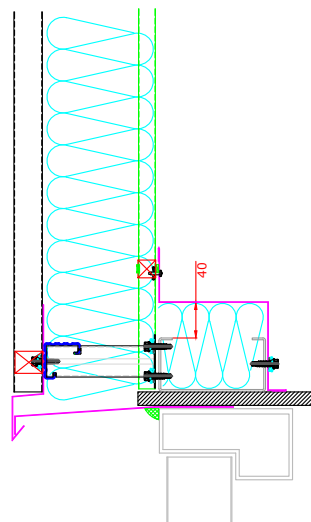
This draft drawing has been supplied by Euroclad Group Ltd for the purpose of guidance free of charge. It is a suggested typical detail and as such should not be assumed suitable for any specific project or application. No responsibility is assumed for errors or misinterpretations resulting from the information contained in the drawing. Details are for illustration only and no liability is accepted. We reserve the right to change the details without notice. The drawing is copyright, it remains our property.

To be read in conjunction with Elite System specification documents



EUROCLAD ELITE SYSTEM 51 WALL CONSTRUCTION





ELITE SYSTEMS

EUROCLAD

www.euroclad.com
Tel: +44 (0)2922 010 101
Fax: +44 (0)2922 010 122

TITLE: Elite System 51

DWG NO: E51

DRAWN: CD

CHECK: MP

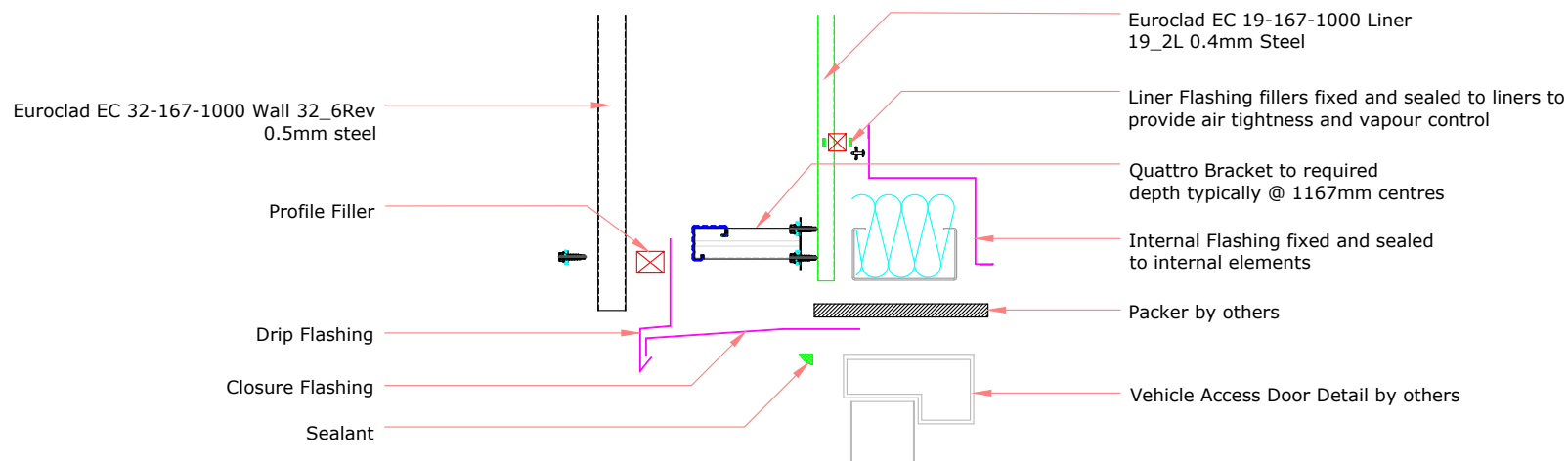
DATE: Jan 2020

SCALE: NTS

This draft drawing has been supplied by Euroclad Group Ltd for the purpose of guidance free of charge. It is a suggested typical detail and as such should not be assumed suitable for any specific project or application. No responsibility is assumed for errors or misinterpretations resulting from the information contained in the drawing. Details are for illustration only and no liability is accepted. We reserve the right to change the details without notice. The drawing is copyright, it remains our property.

To be read in conjunction with Elite System specification documents

EUROCLAD ELITE SYSTEM 51 WALL CONSTRUCTION



Insulation excluded for clarity
A range of mineral & glass wool insulations are available for different requirements

ELITE SYSTEMS

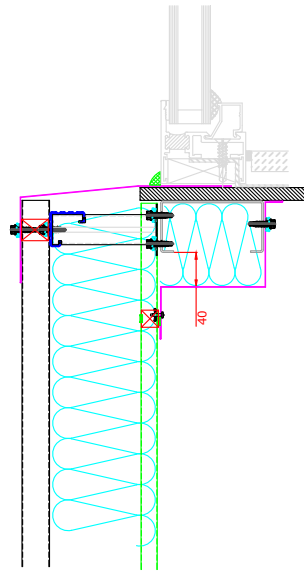


www.euroclad.com
 Tel: +44 (0)2922 010 101
 Fax: +44 (0)2922 010 122

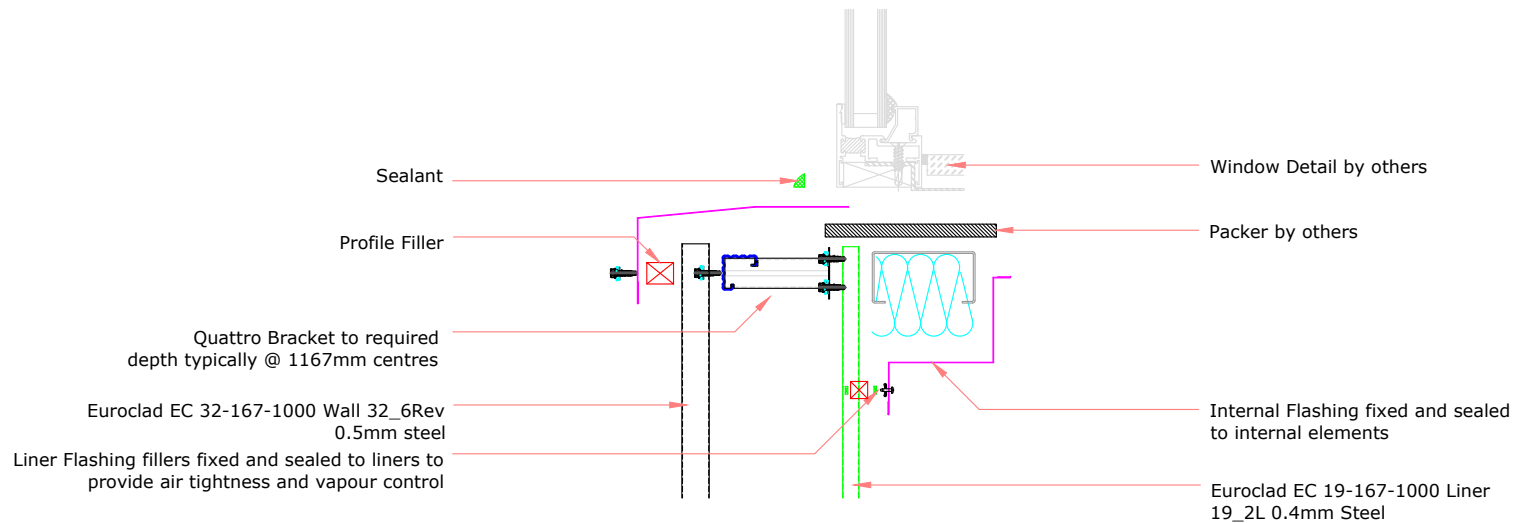
TITLE: Elite System 51
 DWG NO: E51
 DRAWN: CD
 CHECK: MP
 DATE: Jan 2020
 SCALE: NTS

This draft drawing has been supplied by Euroclad Group Ltd for the purpose of guidance free of charge. It is a suggested typical detail and as such should not be assumed suitable for any specific project or application. No responsibility is assumed for errors or misinterpretations resulting from the information contained in the drawing. Details are for illustration only and no liability is accepted. We reserve the right to change the details without notice. The drawing is copyright, it remains our property.

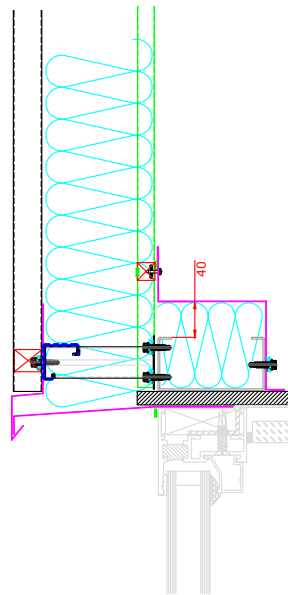
To be read in conjunction with Elite System specification documents



EUROCLAD ELITE SYSTEM 51 WALL CONSTRUCTION



Insulation excluded for clarity
 A range of mineral & glass wool insulations are available for different requirements



ELITE SYSTEMS



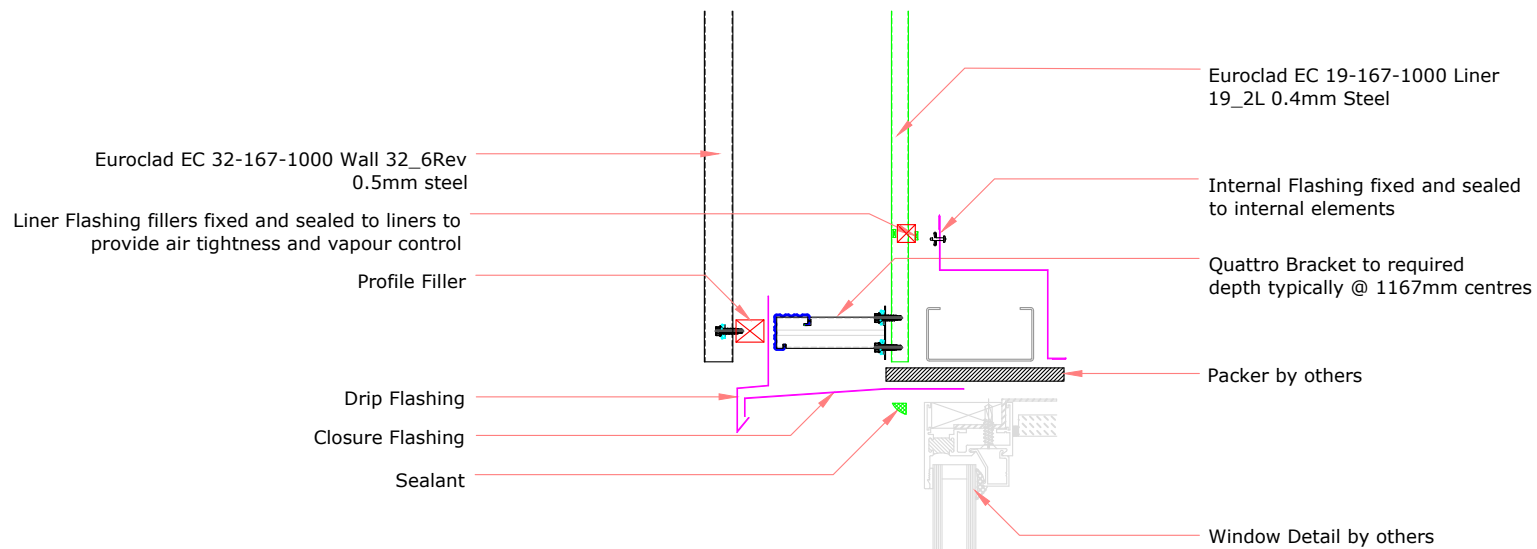
www.euroclad.com
 Tel: +44 (0)2922 010 101
 Fax: +44 (0)2922 010 122

TITLE: Elite System 51
 DWG NO: E51
 DRAWN: CD
 CHECK: MP
 DATE: Jan 2020
 SCALE: NTS

This draft drawing has been supplied by Euroclad Group Ltd for the purpose of guidance free of charge. It is a suggested typical detail and as such should not be assumed suitable for any specific project or application. No responsibility is assumed for errors or misinterpretations resulting from the information contained in the drawing. Details are for illustration only and no liability is accepted. We reserve the right to change the details without notice. The drawing is copyright, it remains our property.

To be read in conjunction with Elite System specification documents

EUROCLAD ELITE SYSTEM 51 WALL CONSTRUCTION



Insulation excluded for clarity
 A range of mineral & glass wool insulations are available for different requirements

ELITE SYSTEMS

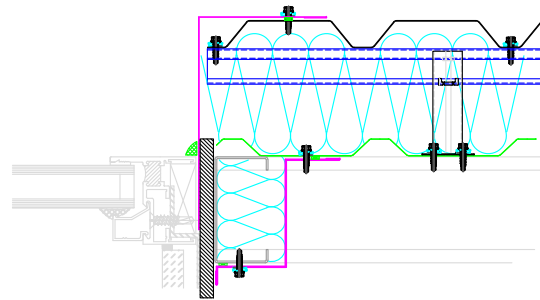


www.euroclad.com
 Tel: +44 (0)2922 010 101
 Fax: +44 (0)2922 010 122

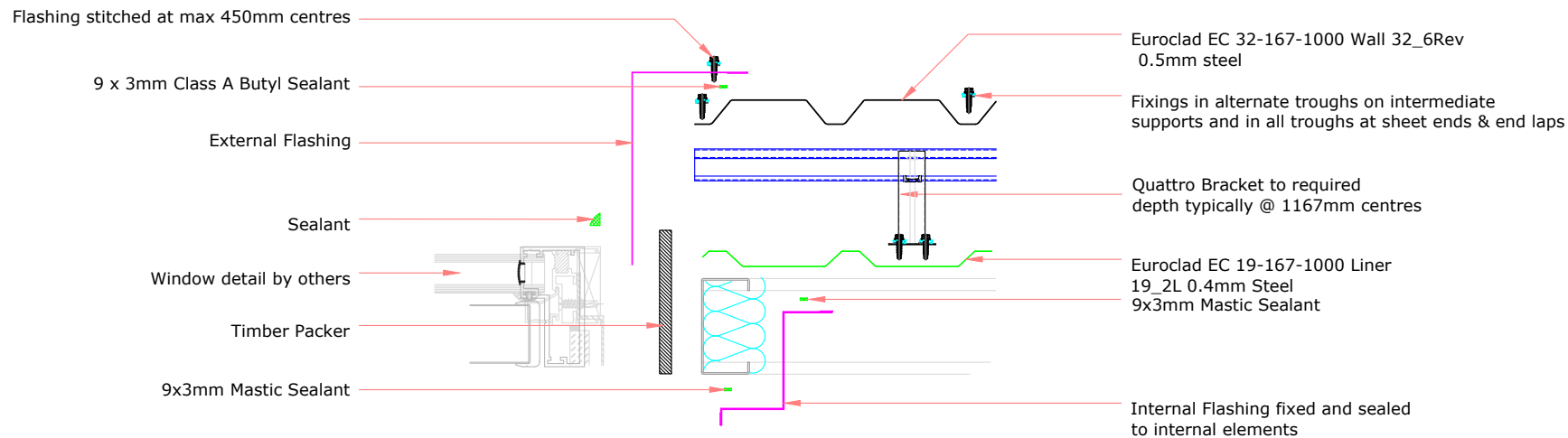
TITLE: Elite System 51
 DWG NO: E51
 DRAWN: CD
 CHECK: MP
 DATE: Jan 2020
 SCALE: NTS

This draft drawing has been supplied by Euroclad Group Ltd for the purpose of guidance free of charge. It is a suggested typical detail and as such should not be assumed suitable for any specific project or application. No responsibility is assumed for errors or misinterpretations resulting from the information contained in the drawing. Details are for illustration only and no liability is accepted. We reserve the right to change the details without notice. The drawing is copyright, it remains our property.

To be read in conjunction with Elite System specification documents



EUROCLAD ELITE SYSTEM 51 WALL CONSTRUCTION



Insulation excluded for clarity
 A range of mineral & glass wool insulations are available for different requirements