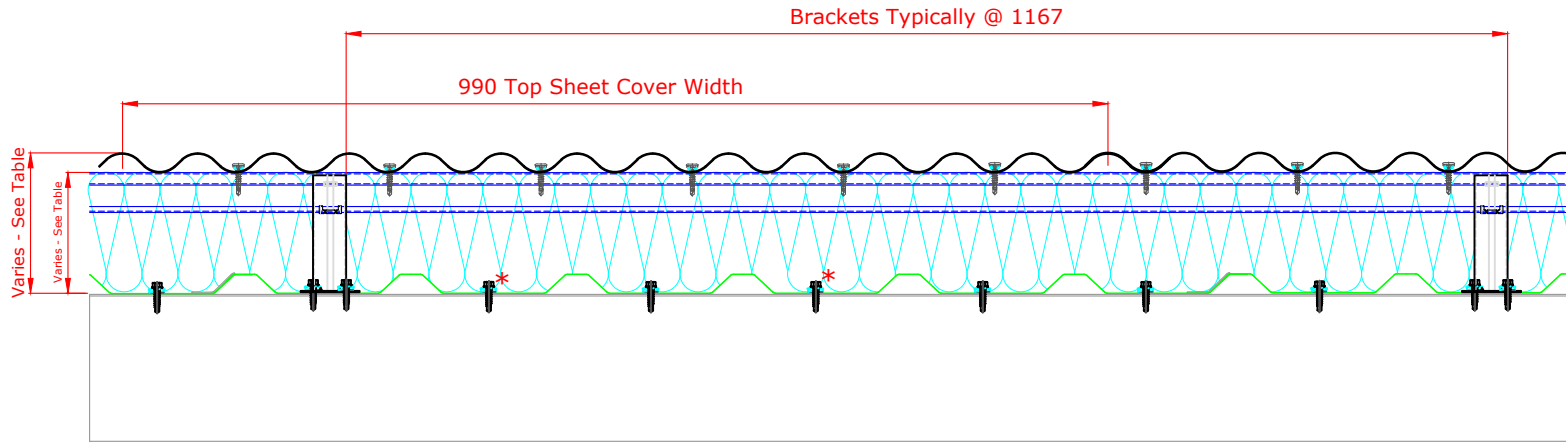


This draft drawing has been supplied by Euroclad Group Ltd for the purpose of guidance free of charge. It is a suggested typical detail and as such should not be assumed suitable for any specific project or application. No responsibility is assumed for errors or misinterpretations resulting from the information contained in the drawing. Details are for illustration only and no liability is accepted. We reserve the right to change the details without notice. The drawing is copyright, it remains our property.

To be read in conjunction with Elite System specification documents



\*Fixings with an asterisk are required on sheet ends and end laps only.

### Elite System 53

Bracket Height	Insulation Thickness	Insulation Value	Overall System Depth	U Value at 1.8M Centres
120mm	120mm	0.040	140mm	0.37
140mm	140mm	0.040	160mm	0.31
150mm	150mm*/160mm	0.040	170mm	0.29
160mm	160mm	0.040	180mm	0.27
170mm	180mm	0.040	190mm	0.26
180mm	180mm	0.040	200mm	0.24
200mm	200mm	0.040	220mm	0.22
220mm	220mm	0.040	240mm	0.20
240mm	240mm	0.040	260mm	0.18
260mm	260mm	0.040	280mm	0.17
280mm	280mm	0.040	300mm	0.15
300mm	300mm	0.040	320mm	0.14

\* Only available in Rockwool Cladding Roll

**Please Note:**

System is fire rated using Knauf Factoryclad 40 ECOSE insulation of minimum thickness 80mm with steel outer sheet only, to achieve 120 minutes Integrity, 15 minutes (min) Insulation which meets the requirements of Building Regulations Part B for external walls where fire attack is from inside the building and the wall is 1M or more from the boundary.

System can be fire rated using Rockwool insulation of minimum thickness 120mm with steel outer sheet only, with liner stitched at 300mm centres, to achieve 120 minutes Integrity, 30 minutes (min) Insulation.

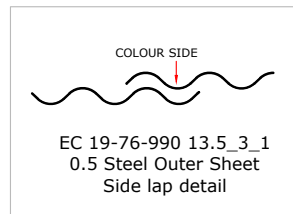
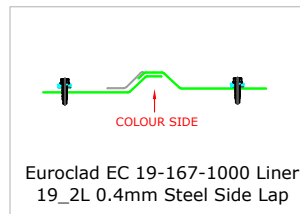
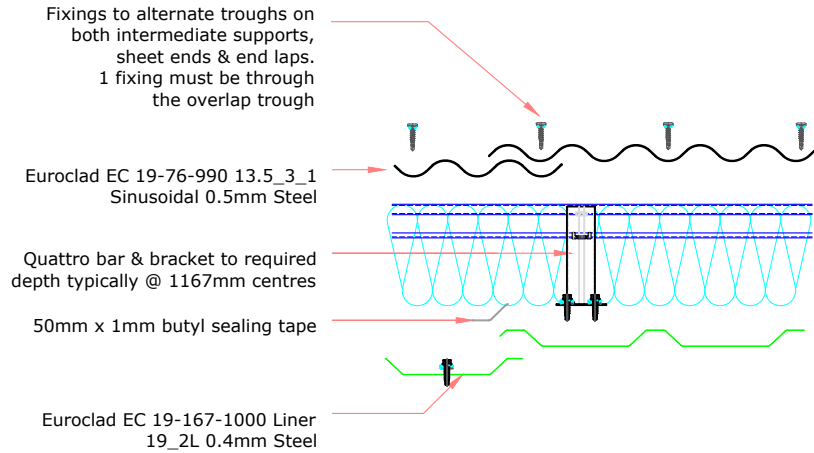
Ensure roll edges are lapped/butted to ensure no gaps.

**Please Note:**  
 System is fire rated using Knauf Factoryclad 40 ECOSE insulation of minimum thickness 80mm with steel outer sheet only, to achieve 120 minutes Integrity, 15 minutes (min) Insulation which meets the requirements of Building Regulations Part B for external walls where fire attack is from inside the building and the wall is 1M or more from the boundary.

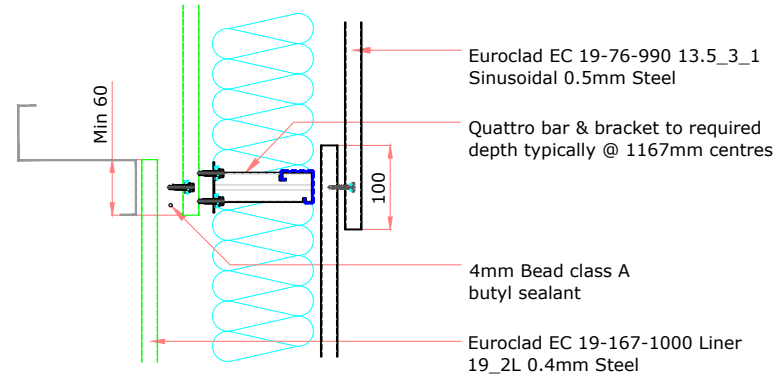
System can be fire rated using Rockwool insulation of minimum thickness 120mm with steel outer sheet only, with liner stitched at 300mm centres, to achieve 120 minutes Integrity, 30 minutes (min) Insulation.

Ensure roll edges are lapped/buttet to ensure no gaps.

ELITE SYSTEM 53 SIDE LAP DETAIL



ELITE SYSTEM 53 END LAP DETAIL



**ELITE SYSTEMS**



www.euroclad.com  
 Tel: +44 (0)2922 010 101  
 Fax: +44 (0)2922 010 122

TITLE: Elite System 53

DWG NO: E53

DRAWN: CD

CHECK: MP

DATE: Jan 2020

SCALE: NTS

This draft drawing has been supplied by Euroclad Group Ltd for the purpose of guidance free of charge. It is a suggested typical detail and as such should not be assumed suitable for any specific project or application. No responsibility is assumed for errors or misinterpretations resulting from the information contained in the drawing. Details are for illustration only and no liability is accepted. We reserve the right to change the details without notice. The drawing is copyright, it remains our property.

To be read in conjunction with Elite System specification documents

ELITE SYSTEMS

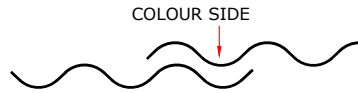
**EUROCLAD**

www.euroclad.com  
Tel: +44 (0)2922 010 101  
Fax: +44 (0)2922 010 122

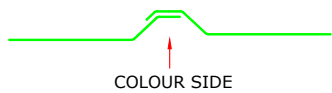
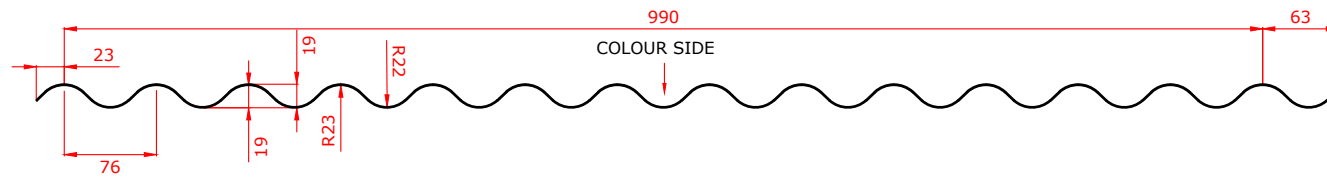
TITLE: Elite System 53  
DWG NO: E53  
DRAWN: CD  
CHECK: MP  
DATE: Jan 2020  
SCALE: NTS

This draft drawing has been supplied by Euroclad Group Ltd for the purpose of guidance free of charge. It is a suggested typical detail and as such should not be assumed suitable for any specific project or application. No responsibility is assumed for errors or misinterpretations resulting from the information contained in the drawing. Details are for illustration only and no liability is accepted. We reserve the right to change the details without notice. The drawing is copyright, it remains our property.

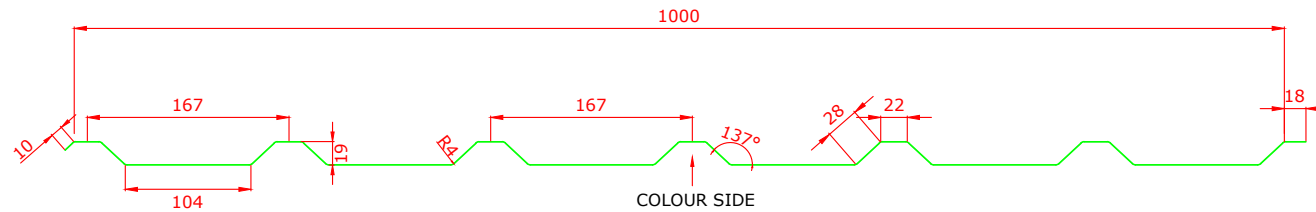
To be read in conjunction with Elite System specification documents



**EUROCLAD EC 19-76-990 13.5 3\_1 SINUSOIDAL 0.5mm EXTERNAL SHEET**

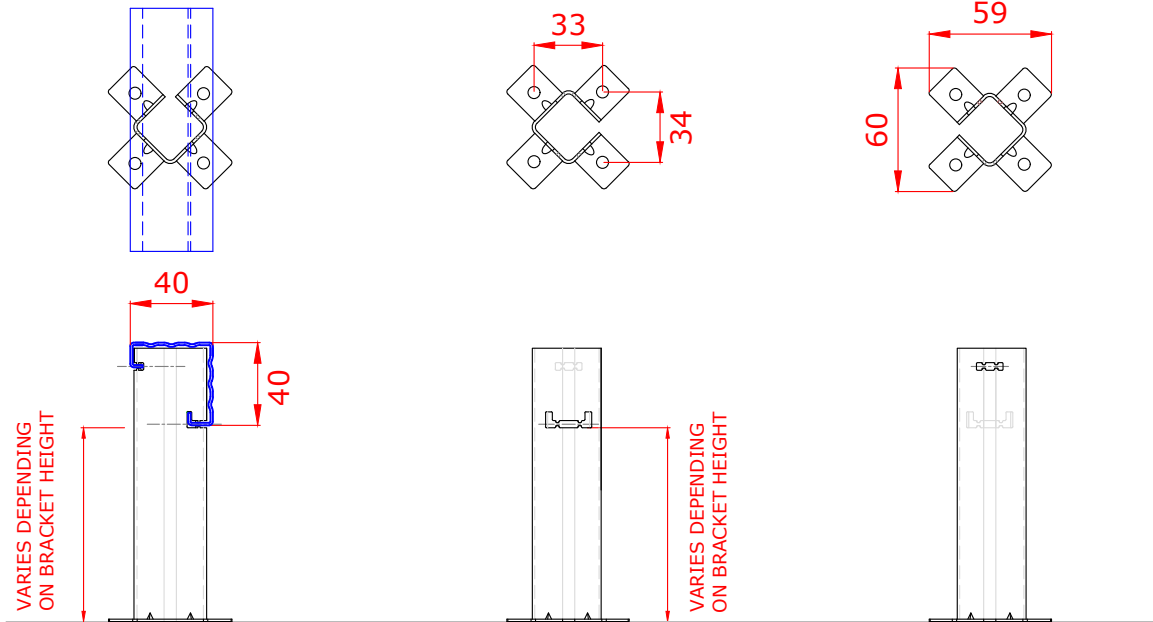
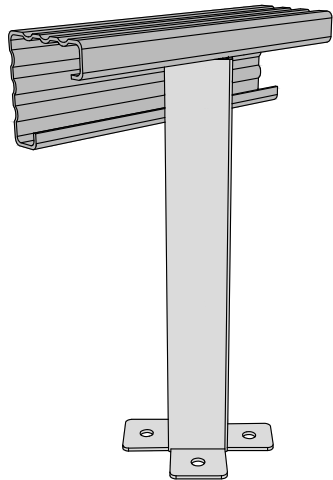


**EUROCLAD EC 19-167-1000 Liner 19\_2L 0.4mm LINER**

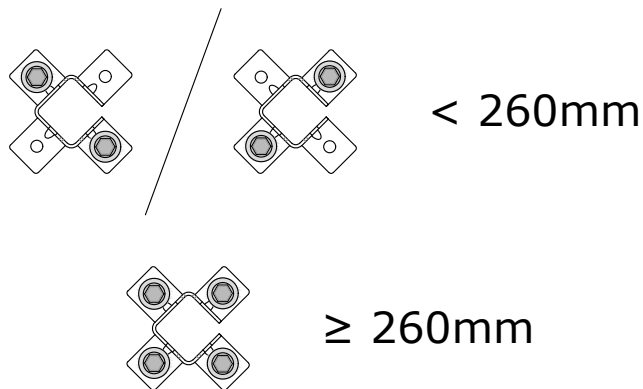


This draft drawing has been supplied by Euroclad Group Ltd for the purpose of guidance free of charge. It is a suggested typical detail and as such should not be assumed suitable for any specific project or application. No responsibility is assumed for errors or misinterpretations resulting from the information contained in the drawing. Details are for illustration only and no liability is accepted. We reserve the right to change the details without notice. The drawing is copyright, it remains our property.

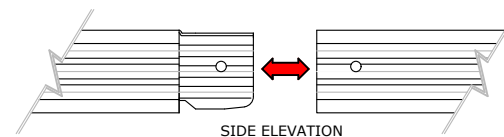
To be read in conjunction with Elite System specification documents



Brackets less than 260mm require 2 fixings diagonally opposite. Brackets 260mm or more require 4 fixings.

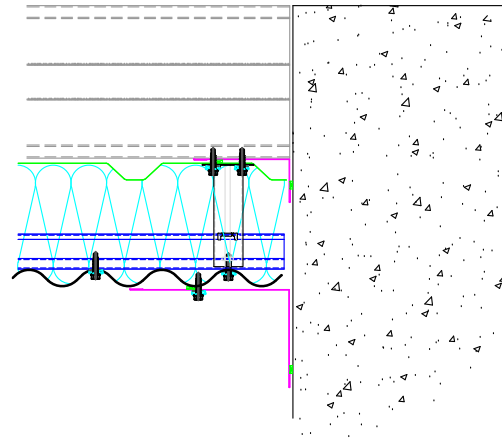


Maximum bar cantilever at free ends is 300mm. Spigot can fall anywhere between two brackets.

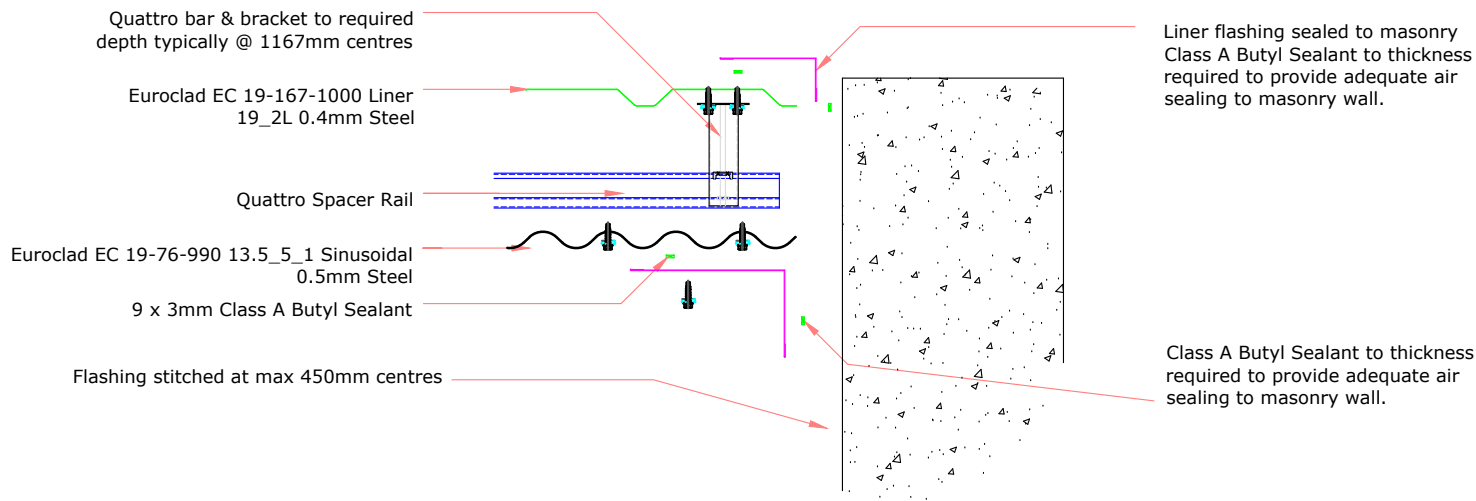


This draft drawing has been supplied by Euroclad Group Ltd for the purpose of guidance free of charge. It is a suggested typical detail and as such should not be assumed suitable for any specific project or application. No responsibility is assumed for errors or misinterpretations resulting from the information contained in the drawing. Details are for illustration only and no liability is accepted. We reserve the right to change the details without notice. The drawing is copyright, it remains our property.

To be read in conjunction with Elite System specification documents



**EUROCLAD ELITE SYSTEM 53 WALL CONSTRUCTION**

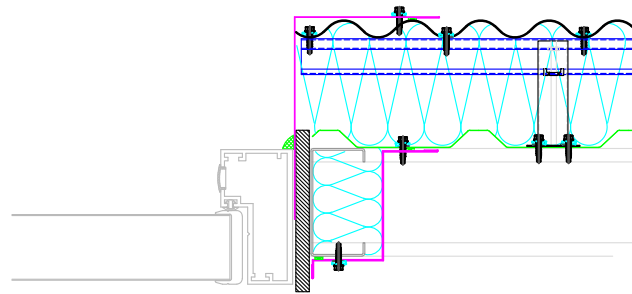


Insulation excluded for clarity  
A range of mineral & glass wool insulations are available for different requirements

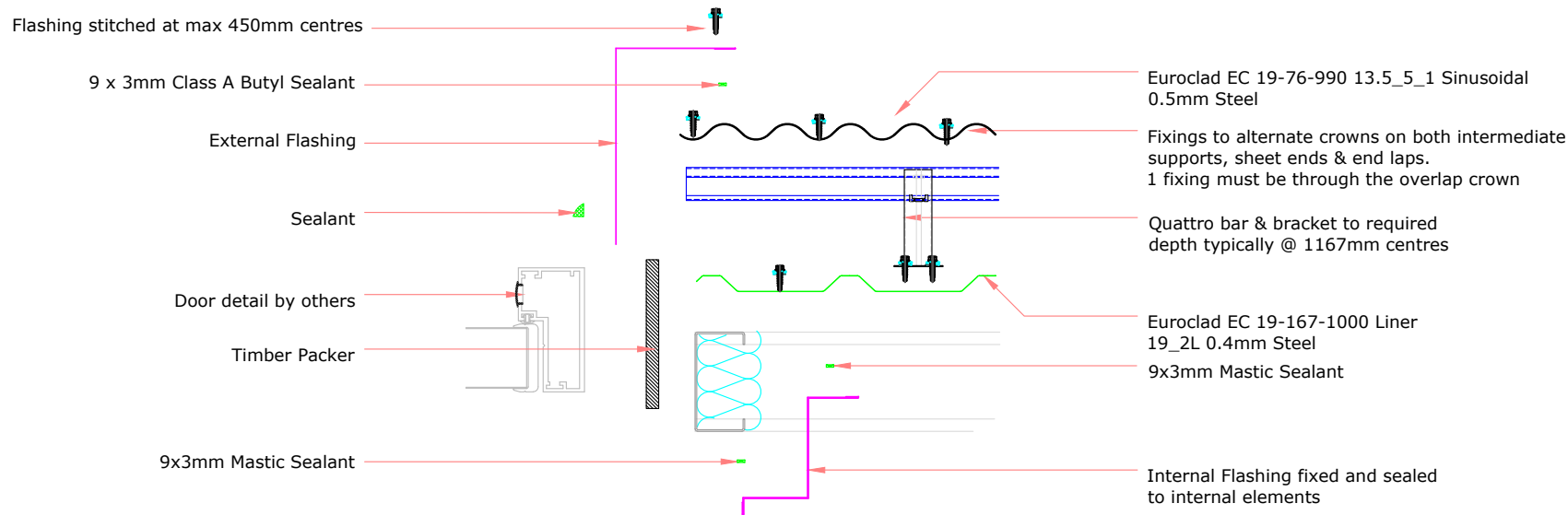
TITLE: Elite System 53  
 DWG NO: E53  
 DRAWN: CD  
 CHECK: MP  
 DATE: Jan 2020  
 SCALE: NTS

This draft drawing has been supplied by Euroclad Group Ltd for the purpose of guidance free of charge. It is a suggested typical detail and as such should not be assumed suitable for any specific project or application. No responsibility is assumed for errors or misinterpretations resulting from the information contained in the drawing. Details are for illustration only and no liability is accepted. We reserve the right to change the details without notice. The drawing is copyright, it remains our property.

To be read in conjunction with Elite System specification documents

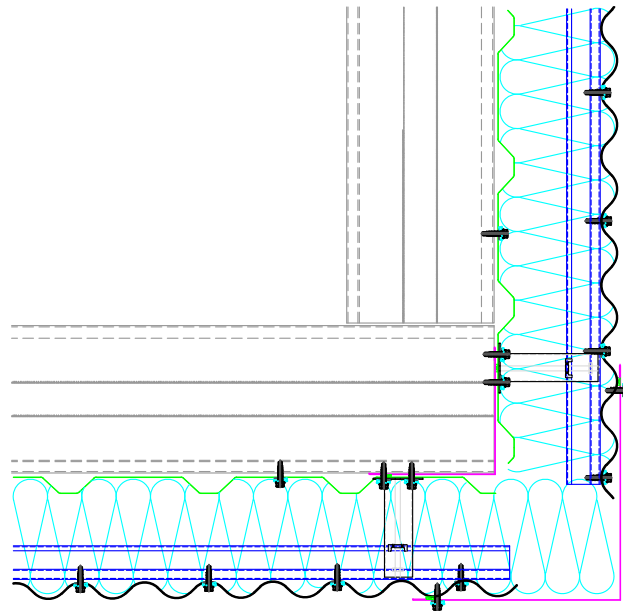


**EUROCLAD ELITE SYSTEM 53 WALL CONSTRUCTION**



Insulation excluded for clarity

A range of mineral & glass wool insulations are available for different requirements



**ELITE SYSTEMS**



www.euroclad.com  
 Tel: +44 (0)2922 010 101  
 Fax: +44 (0)2922 010 122

TITLE: Elite System 53

DWG NO: E53

DRAWN: CD

CHECK: MP

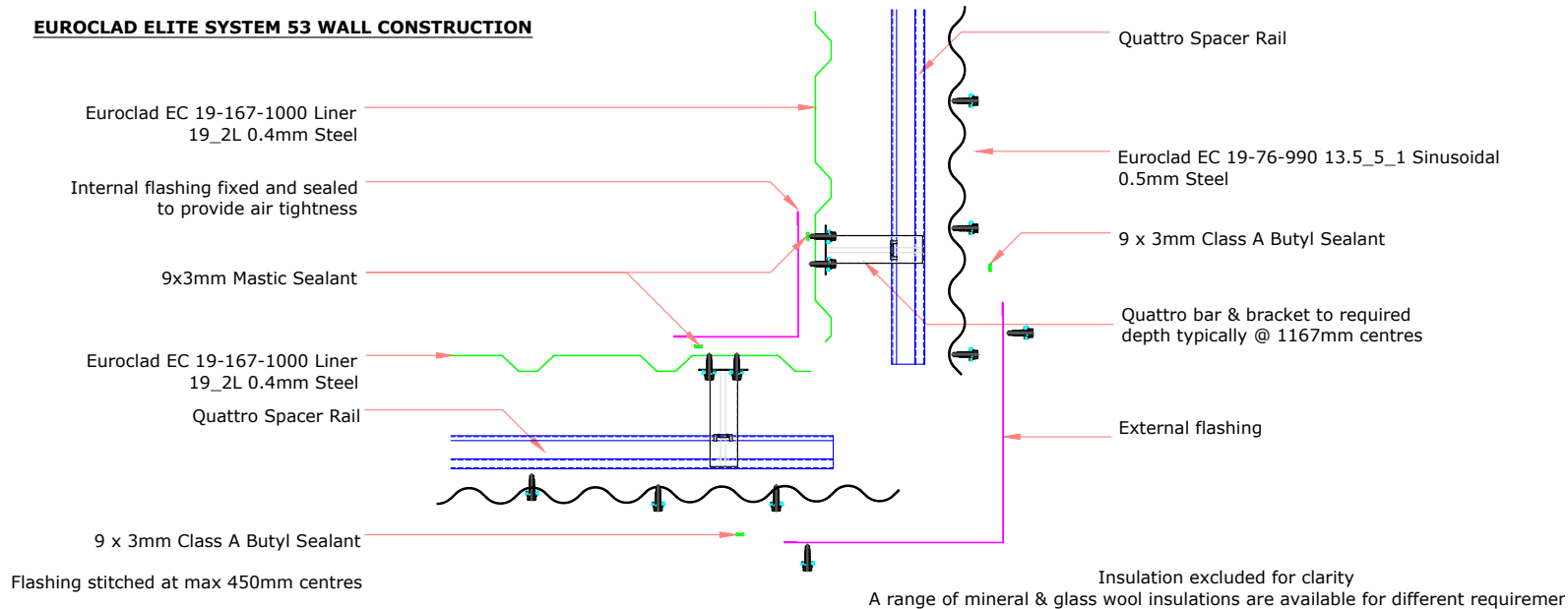
DATE: Jan 2020

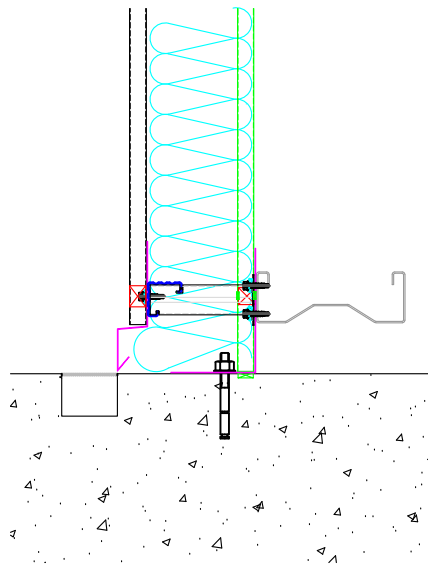
SCALE: NTS

This draft drawing has been supplied by Euroclad Group Ltd for the purpose of guidance free of charge. It is a suggested typical detail and as such should not be assumed suitable for any specific project or application. No responsibility is assumed for errors or misinterpretations resulting from the information contained in the drawing. Details are for illustration only and no liability is accepted. We reserve the right to change the details without notice. The drawing is copyright, it remains our property.

To be read in conjunction with Elite System specification documents

**EUROCLAD ELITE SYSTEM 53 WALL CONSTRUCTION**





**ELITE SYSTEMS**



www.euroclad.com  
 Tel: +44 (0)2922 010 101  
 Fax: +44 (0)2922 010 122

TITLE: Elite System 53  
 DWG NO: E53  
 DRAWN: CD  
 CHECK: MP  
 DATE: Jan 2020  
 SCALE: NTS

This draft drawing has been supplied by Euroclad Group Ltd for the purpose of guidance free of charge. It is a suggested typical detail and as such should not be assumed suitable for any specific project or application. No responsibility is assumed for errors or misinterpretations resulting from the information contained in the drawing. Details are for illustration only and no liability is accepted. We reserve the right to change the details without notice. The drawing is copyright, it remains our property.

To be read in conjunction with Elite System specification documents

**EUROCLAD ELITE SYSTEM 53 WALL CONSTRUCTION**

Euroclad EC 19-76-990 13.5\_5\_1 Sinusoidal 0.5mm Steel

Quattro bar & bracket to required depth typically @ 1167mm centres

Profile Filler

Drip Flashing

Drainage Point

Euroclad EC 19-167-1000 Liner 19\_2L 0.4mm Steel

Liner Flashing fillers fixed and sealed to liners to provide air tightness and vapour control

Large amount of sealant to make allowance for imperfection in concrete and ensure good airtightness. Seal may be achieved at flashing or structural element such as ring beam, depending on project specific details.

Insulation excluded for clarity

A range of mineral & glass wool insulations are available for different requirements



**ELITE SYSTEMS**

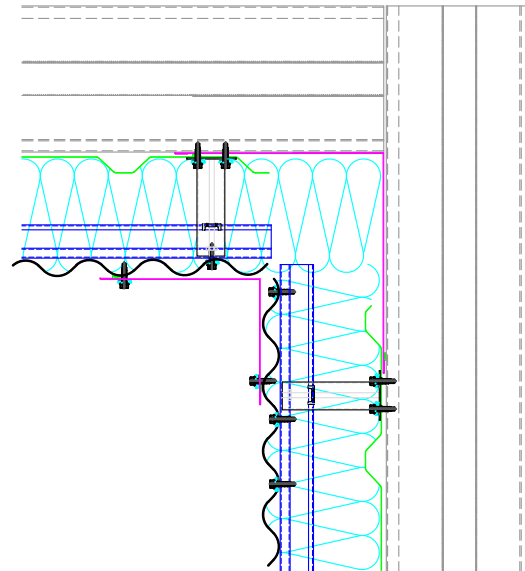


www.euroclad.com  
 Tel: +44 (0)2922 010 101  
 Fax: +44 (0)2922 010 122

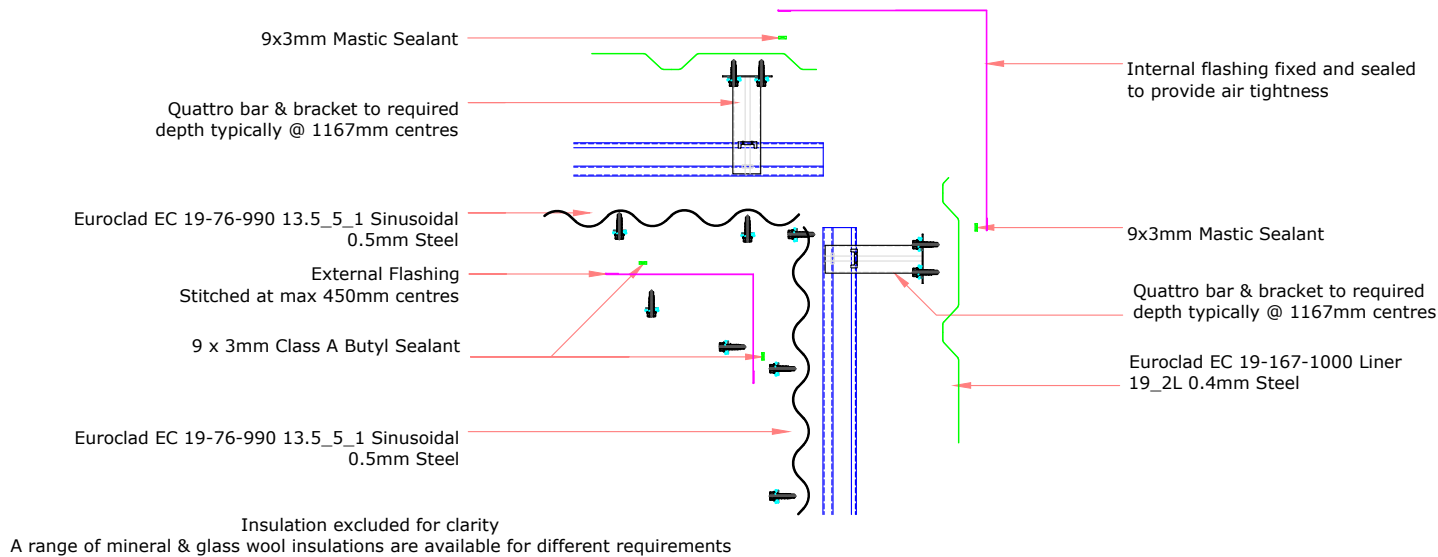
TITLE: Elite System 53  
 DWG NO: E53  
 DRAWN: CD  
 CHECK: MP  
 DATE: Jan 2020  
 SCALE: NTS

This draft drawing has been supplied by Euroclad Group Ltd for the purpose of guidance free of charge. It is a suggested typical detail and as such should not be assumed suitable for any specific project or application. No responsibility is assumed for errors or misinterpretations resulting from the information contained in the drawing. Details are for illustration only and no liability is accepted. We reserve the right to change the details without notice. The drawing is copyright, it remains our property.

To be read in conjunction with Elite System specification documents



**EUROCLAD ELITE SYSTEM 53 WALL CONSTRUCTION**



TITLE: Elite System 53

DWG NO: E53

DRAWN: CD

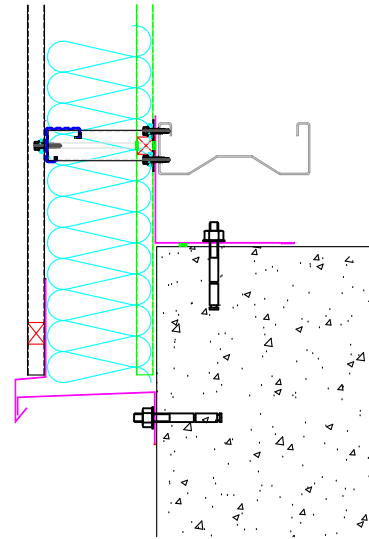
CHECK: MP

DATE: Jan 2020

SCALE: NTS

This draft drawing has been supplied by Euroclad Group Ltd for the purpose of guidance free of charge. It is a suggested typical detail and as such should not be assumed suitable for any specific project or application. No responsibility is assumed for errors or misinterpretations resulting from the information contained in the drawing. Details are for illustration only and no liability is accepted. We reserve the right to change the details without notice. The drawing is copyright, it remains our property.

To be read in conjunction with Elite System specification documents



**EUROCLAD ELITE SYSTEM 53 WALL CONSTRUCTION**

Euroclad EC 19-76-990 13.5\_5\_1 Sinusoidal 0.5mm Steel

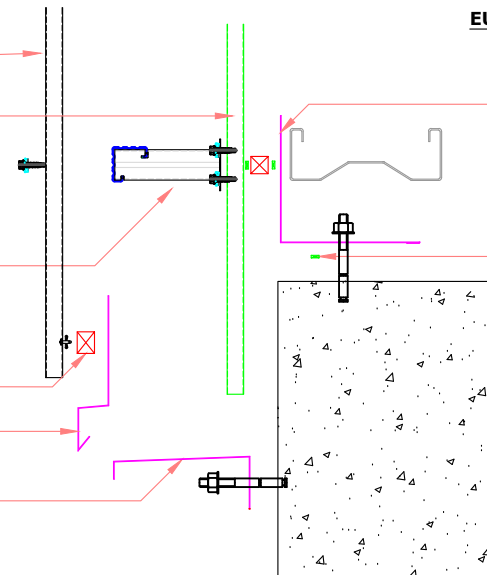
Euroclad EC 19-167-1000 Liner 19\_2L 0.4mm Steel

Quattro bar & bracket to required depth typically @ 1167mm centres

Profile Filler

Drip Flashing

Closure Flashing



Liner Flashing fillers fixed and sealed to liners to provide air tightness and vapour control

Large amount of sealant to make allowance for imperfection in concrete and ensure good airtightness. Seal may be achieved at flashing or structural element such as ring beam, depending on project specific details.

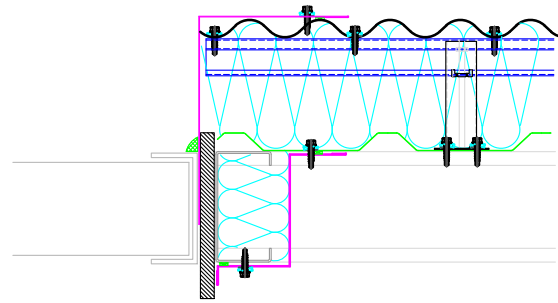
Insulation excluded for clarity

A range of mineral & glass wool insulations are available for different requirements

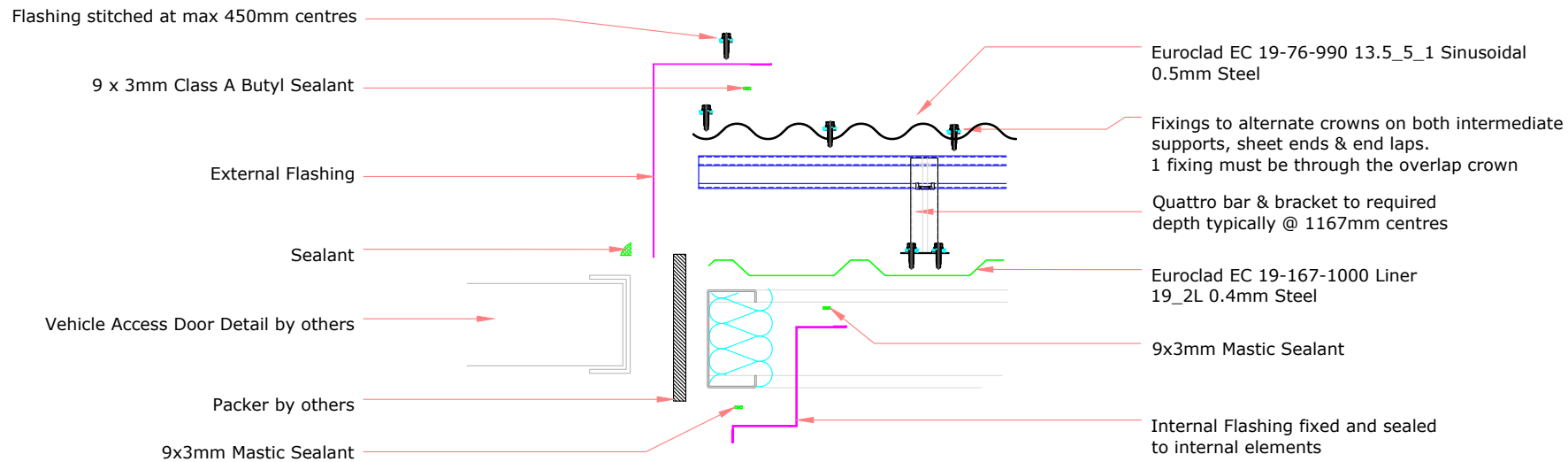
TITLE: Elite System 53  
DWG NO: E53  
DRAWN: CD  
CHECK: MP  
DATE: Jan 2020  
SCALE: NTS

This draft drawing has been supplied by Euroclad Group Ltd for the purpose of guidance free of charge. It is a suggested typical detail and as such should not be assumed suitable for any specific project or application. No responsibility is assumed for errors or misinterpretations resulting from the information contained in the drawing. Details are for illustration only and no liability is accepted. We reserve the right to change the details without notice. The drawing is copyright, it remains our property.

To be read in conjunction with Elite System specification documents



**EUROCLAD ELITE SYSTEM 53 WALL CONSTRUCTION**



**ELITE SYSTEMS**



www.euroclad.com  
Tel: +44 (0)2922 010 101  
Fax: +44 (0)2922 010 122

TITLE: Elite System 53

DWG NO: E53

DRAWN: CD

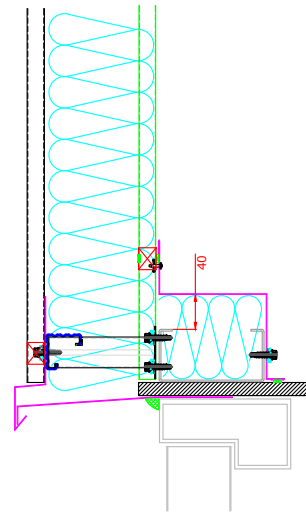
CHECK: MP

DATE: Jan 2020

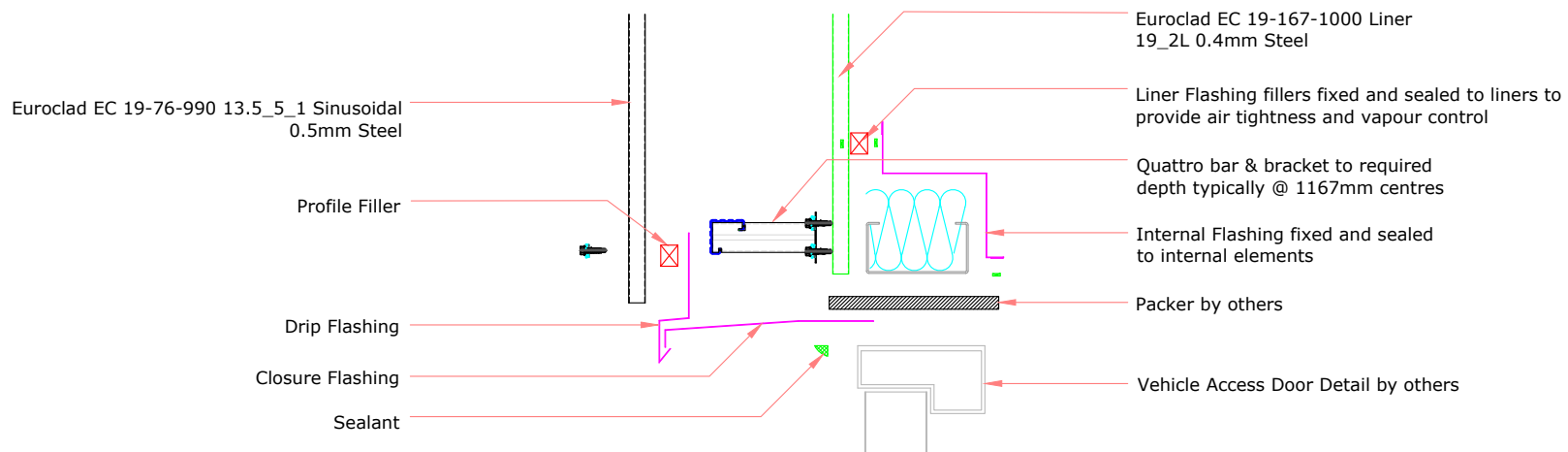
SCALE: NTS

This draft drawing has been supplied by Euroclad Group Ltd for the purpose of guidance free of charge. It is a suggested typical detail and as such should not be assumed suitable for any specific project or application. No responsibility is assumed for errors or misinterpretations resulting from the information contained in the drawing. Details are for illustration only and no liability is accepted. We reserve the right to change the details without notice. The drawing is copyright, it remains our property.

To be read in conjunction with Elite System specification documents

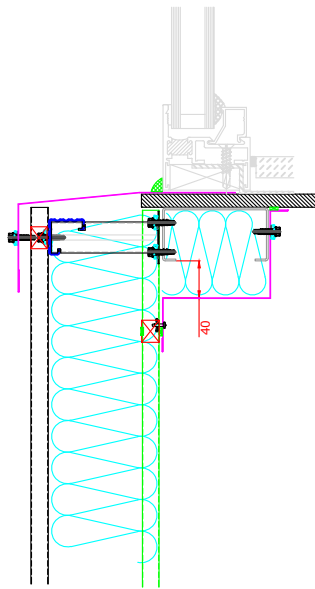


**EUROCLAD ELITE SYSTEM 53 WALL CONSTRUCTION**



Insulation excluded for clarity

A range of mineral & glass wool insulations are available for different requirements



**ELITE SYSTEMS**



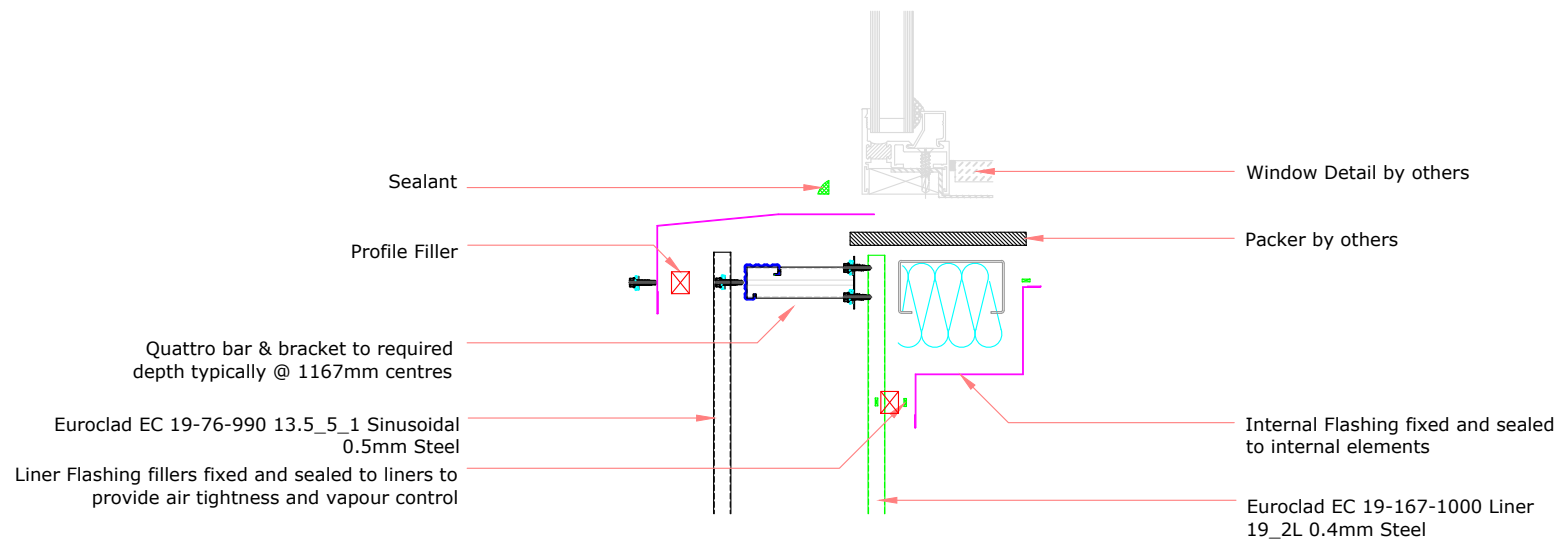
www.euroclad.com  
 Tel: +44 (0)2922 010 101  
 Fax: +44 (0)2922 010 122

TITLE: Elite System 53  
 DWG NO: E53  
 DRAWN: CD  
 CHECK: MP  
 DATE: Jan 2020  
 SCALE: NTS

This draft drawing has been supplied by Euroclad Group Ltd for the purpose of guidance free of charge. It is a suggested typical detail and as such should not be assumed suitable for any specific project or application. No responsibility is assumed for errors or misinterpretations resulting from the information contained in the drawing. Details are for illustration only and no liability is accepted. We reserve the right to change the details without notice. The drawing is copyright, it remains our property.

To be read in conjunction with Elite System specification documents

**EUROCLAD ELITE SYSTEM 53 WALL CONSTRUCTION**



Insulation excluded for clarity

A range of mineral & glass wool insulations are available for different requirements

**ELITE SYSTEMS**

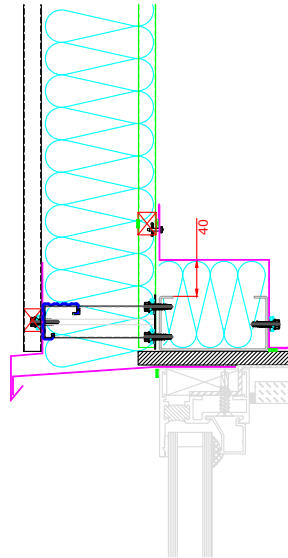


www.euroclad.com  
 Tel: +44 (0)2922 010 101  
 Fax: +44 (0)2922 010 122

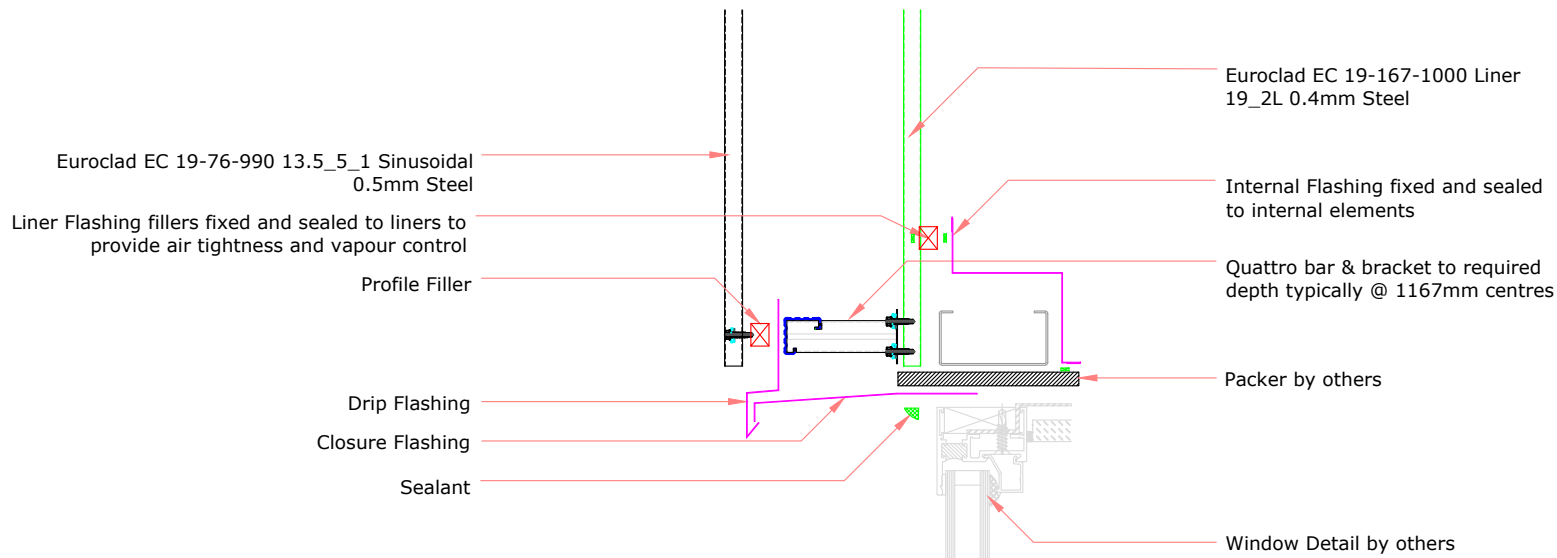
TITLE: Elite System 53  
 DWG NO: E53  
 DRAWN: CD  
 CHECK: MP  
 DATE: Jan 2020  
 SCALE: NTS

This draft drawing has been supplied by Euroclad Group Ltd for the purpose of guidance free of charge. It is a suggested typical detail and as such should not be assumed suitable for any specific project or application. No responsibility is assumed for errors or misinterpretations resulting from the information contained in the drawing. Details are for illustration only and no liability is accepted. We reserve the right to change the details without notice. The drawing is copyright, it remains our property.

To be read in conjunction with Elite System specification documents



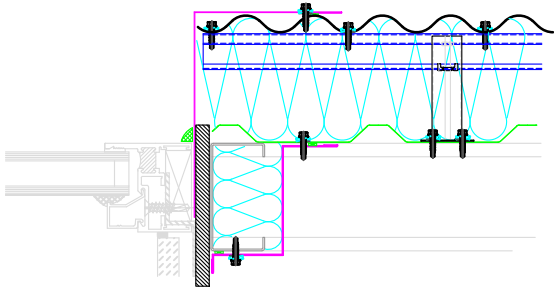
**EUROCLAD ELITE SYSTEM 53 WALL CONSTRUCTION**



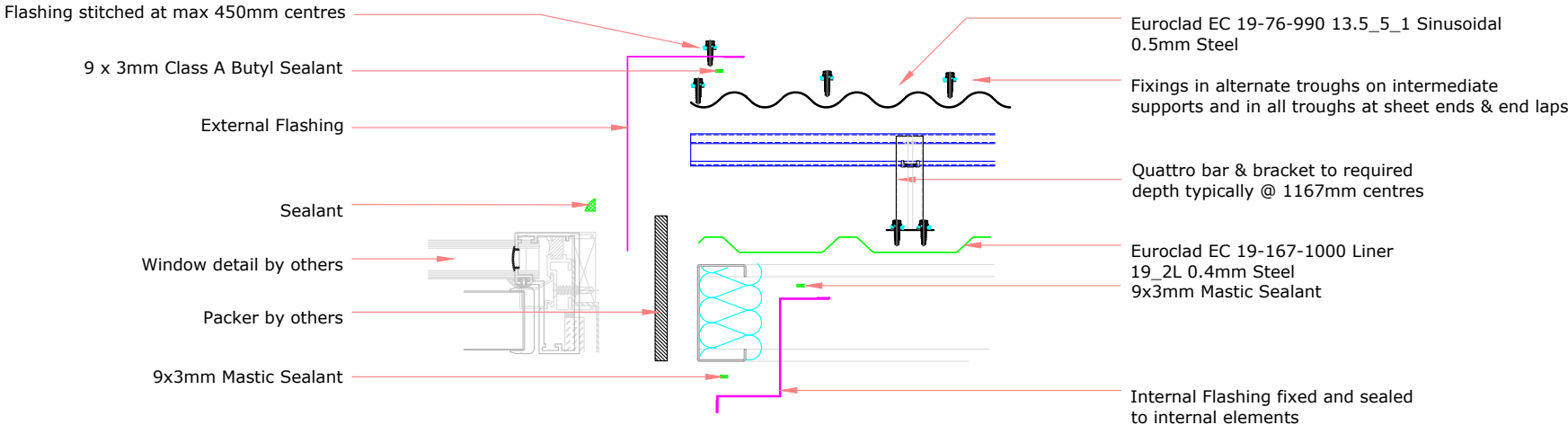
Insulation excluded for clarity  
 A range of mineral & glass wool insulations are available for different requirements

This draft drawing has been supplied by Euroclad Group Ltd for the purpose of guidance free of charge. It is a suggested typical detail and as such should not be assumed suitable for any specific project or application. No responsibility is assumed for errors or misinterpretations resulting from the information contained in the drawing. Details are for illustration only and no liability is accepted. We reserve the right to change the details without notice. The drawing is copyright, it remains our property.

To be read in conjunction with Elite System specification documents



**EUROCLAD ELITE SYSTEM 53 WALL CONSTRUCTION**



Insulation excluded for clarity  
 A range of mineral & glass wool insulations are available for different requirements