

*Fixings with an asterisk are required on sheet ends and end laps only.

Elite System 50

Bracket Height	Insulation Thickness	Insulation Value	Overall System Depth	U Value at 1.8M Centres
120mm	120mm	0.040	171mm	0.35
140mm	140mm	0.040	191mm	0.30
150mm	150mm*/160mm	0.040	201mm	0.28
160mm	160mm	0.040	211mm	0.27
170mm	180mm	0.040	221mm	0.25
180mm	180mm	0.040	231mm	0.24
200mm	200mm	0.040	251mm	0.21
220mm	220mm	0.040	271mm	0.20
240mm	240mm	0.040	291mm	0.18
260mm	260mm	0.040	311mm	0.17
280mm	280mm	0.040	331mm	0.15
300mm	300mm	0.040	351mm	0.14

* Only available in Rockwool Cladding Roll

Please Note:

System is fire rated using Knauf Factoryclad 40 ECOSE insulation of minimum thickness 80mm with steel outer sheet only, to achieve 120 minutes Integrity, 15 minutes (min) Insulation which meets the requirements of Building Regulations Part B for external walls where fire attack is from inside the building and the wall is 1M or more from the boundary.

System can be fire rated using Rockwool insulation of minimum thickness 120mm with steel outer sheet only, with liner stitched at 300mm centres, to achieve 120 minutes Integrity, 30 minutes (min) Insulation.

Ensure roll edges are lapped/butted to ensure no gaps.

ELITE SYSTEMS

EUROCLAD

www.euroclad.com
Tel: +44 (0)2922 010 101
Fax: +44 (0)2922 010 122

TITLE: Elite System 50

DWG NO: E50

DRAWN: CD

CHECK: MP

DATE: Jan 2020

SCALE: NTS

This draft drawing has been supplied by Euroclad Group Ltd for the purpose of guidance free of charge. It is a suggested typical detail and as such should not be assumed suitable for any specific project or application. No responsibility is assumed for errors or misinterpretations resulting from the information contained in the drawing. Details are for illustration only and no liability is accepted. We reserve the right to change the details without notice. The drawing is copyright, it remains our property.

To be read in conjunction with Elite System specification documents

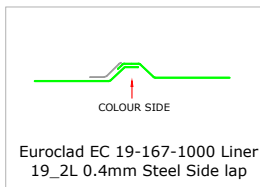
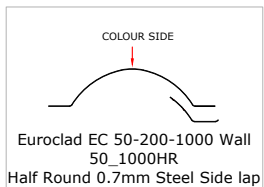
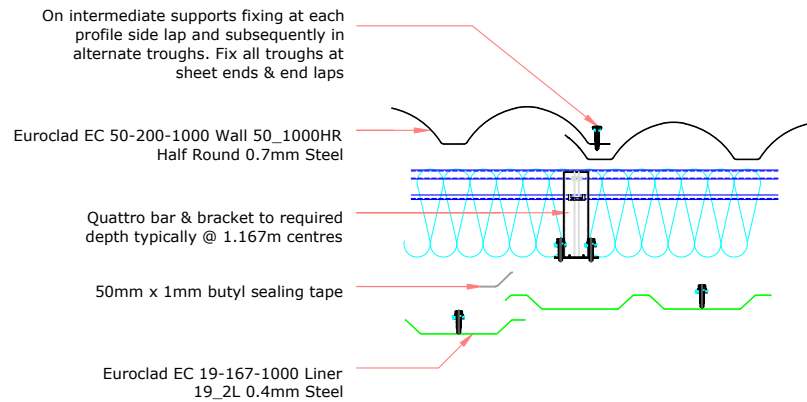
Please Note:

System is fire rated using Knauf Factoryclad 40 ECOSE insulation of minimum thickness 80mm with steel outer sheet only, to achieve 120 minutes Integrity, 15 minutes (min) Insulation which meets the requirements of Building Regulations Part B for external walls where fire attack is from inside the building and the wall is 1M or more from the boundary.

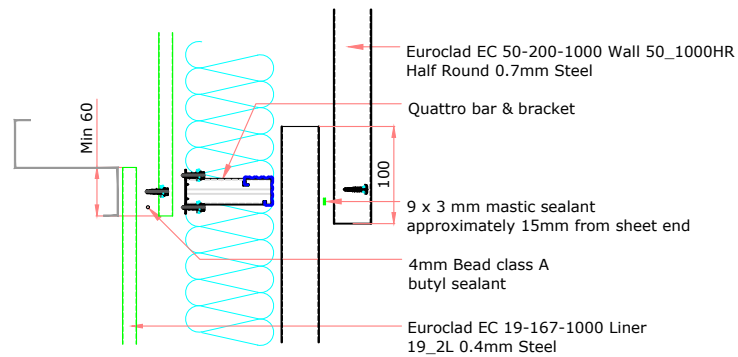
System can be fire rated using Rockwool insulation of minimum thickness 120mm with steel outer sheet only, with liner stitched at 300mm centres, to achieve 120 minutes Integrity, 30 minutes (min) Insulation.

Ensure roll edges are lapped/butted to ensure no gaps.

ELITE SYSTEM 50 SIDE LAP DETAIL



ELITE SYSTEM 50 END LAP DETAIL



ELITE SYSTEMS

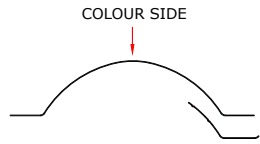


www.euroclad.com
Tel: +44 (0)2922 010 101
Fax: +44 (0)2922 010 122

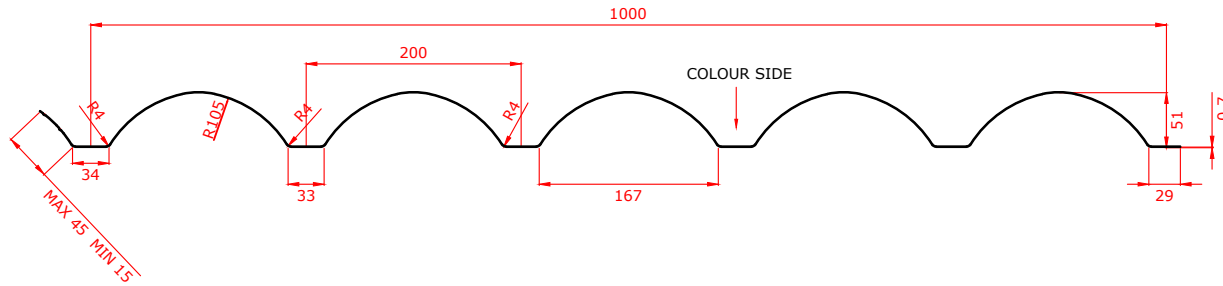
TITLE: Elite System 50
DWG NO: E50
DRAWN: CD
CHECK: MP
DATE: Jan 2020
SCALE: NTS

This draft drawing has been supplied by Euroclad Group Ltd for the purpose of guidance free of charge. It is a suggested typical detail and as such should not be assumed suitable for any specific project or application. No responsibility is assumed for errors or misinterpretations resulting from the information contained in the drawing. Details are for illustration only and no liability is accepted. We reserve the right to change the details without notice. The drawing is copyright, it remains our property.

To be read in conjunction with Elite System specification documents



EUROCLAD EC 50-200-1000 Wall 50_1000HR Half Round 0.7mm EXTERNAL SHEET



ELITE SYSTEMS

EUROCLAD

www.euroclad.com
Tel: +44 (0)2922 010 101
Fax: +44 (0)2922 010 122

TITLE: Elite System 50

DWG NO: E50

DRAWN: CD

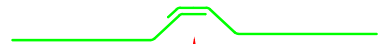
CHECK: MP

DATE: Jan 2020

SCALE: NTS

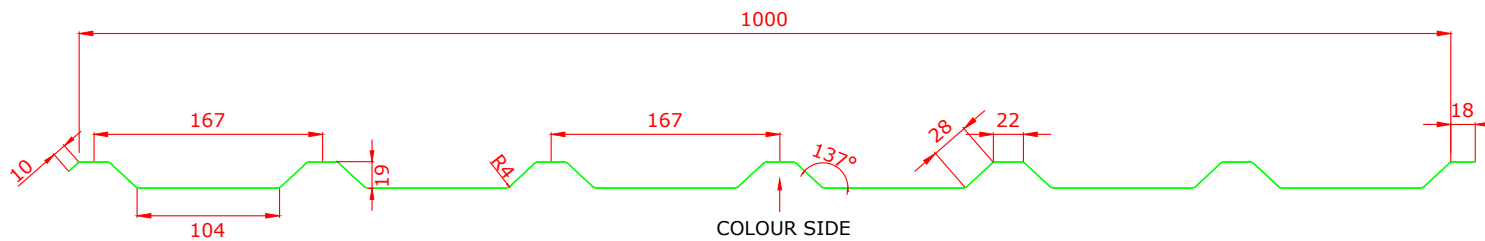
This draft drawing has been supplied by Euroclad Group Ltd for the purpose of guidance free of charge. It is a suggested typical detail and as such should not be assumed suitable for any specific project or application. No responsibility is assumed for errors or misinterpretations resulting from the information contained in the drawing. Details are for illustration only and no liability is accepted. We reserve the right to change the details without notice. The drawing is copyright, it remains our property.

To be read in conjunction with Elite System specification documents



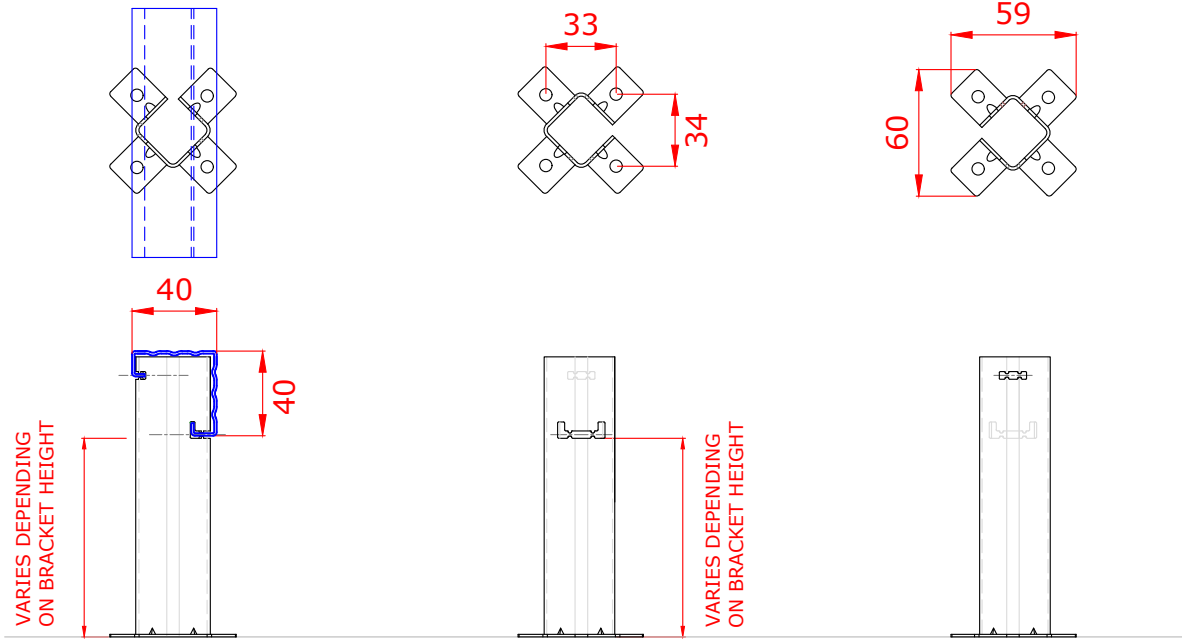
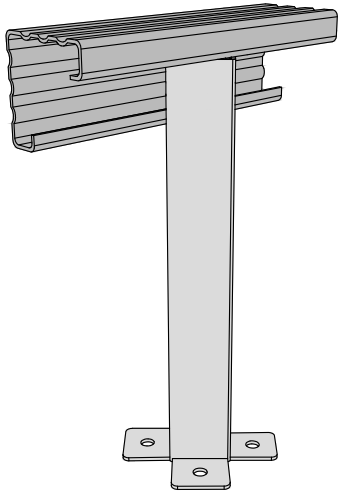
COLOUR SIDE

EUROCLAD EC 19-167-1000 Liner 19_2L 0.4mm LINER

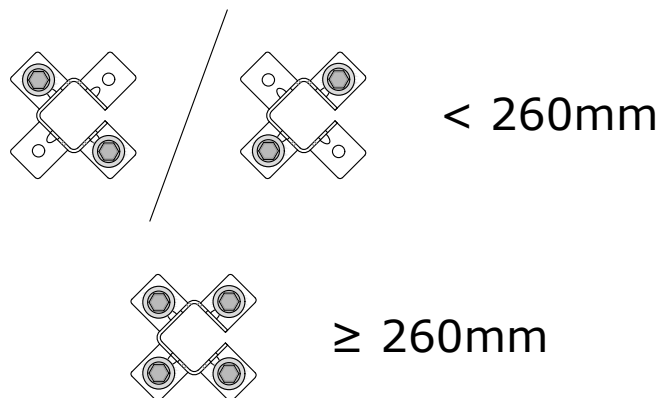


This draft drawing has been supplied by Euroclad Group Ltd for the purpose of guidance free of charge. It is a suggested typical detail and as such should not be assumed suitable for any specific project or application. No responsibility is assumed for errors or misinterpretations resulting from the information contained in the drawing. Details are for illustration only and no liability is accepted. We reserve the right to change the details without notice. The drawing is copyright, it remains our property.

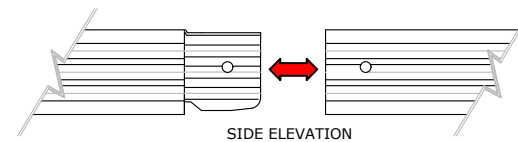
To be read in conjunction with Elite System specification documents



Brackets less than 260mm require 2 fixings diagonally opposite. Brackets 260mm or more require 4 fixings.



Maximum bar cantilever at free ends is 300mm. Spigot can fall anywhere between two brackets.



ELITE SYSTEMS



www.euroclad.com
Tel: +44 (0)2922 010 101
Fax: +44 (0)2922 010 122

TITLE: Elite System 50

DWG NO: E50

DRAWN: CD

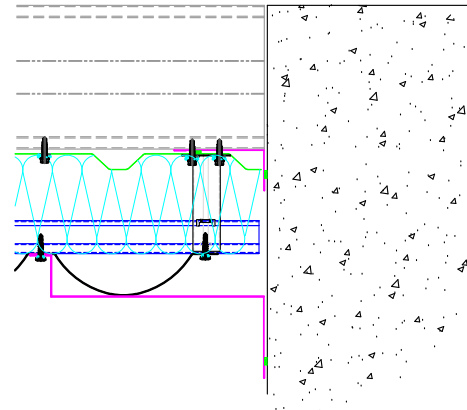
CHECK: MP

DATE: Jan 2020

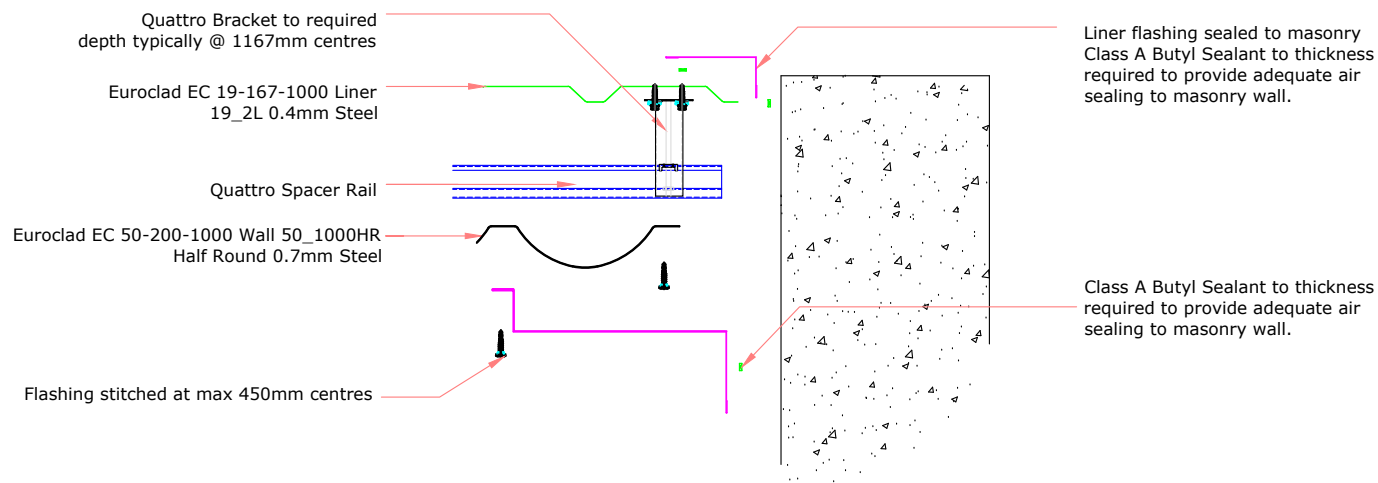
SCALE: NTS

This draft drawing has been supplied by Euroclad Group Ltd for the purpose of guidance free of charge. It is a suggested typical detail and as such should not be assumed suitable for any specific project or application. No responsibility is assumed for errors or misinterpretations resulting from the information contained in the drawing. Details are for illustration only and no liability is accepted. We reserve the right to change the details without notice. The drawing is copyright, it remains our property.

To be read in conjunction with Elite System specification documents



EUROCLAD ELITE SYSTEM 50 WALL CONSTRUCTION



Insulation excluded for clarity
A range of mineral & glass wool insulations are available for different requirements

TITLE: Elite System 50

DWG NO: E50

DRAWN: CD

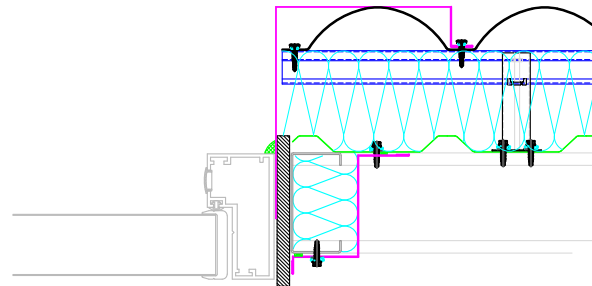
CHECK: MP

DATE: Jan 2020

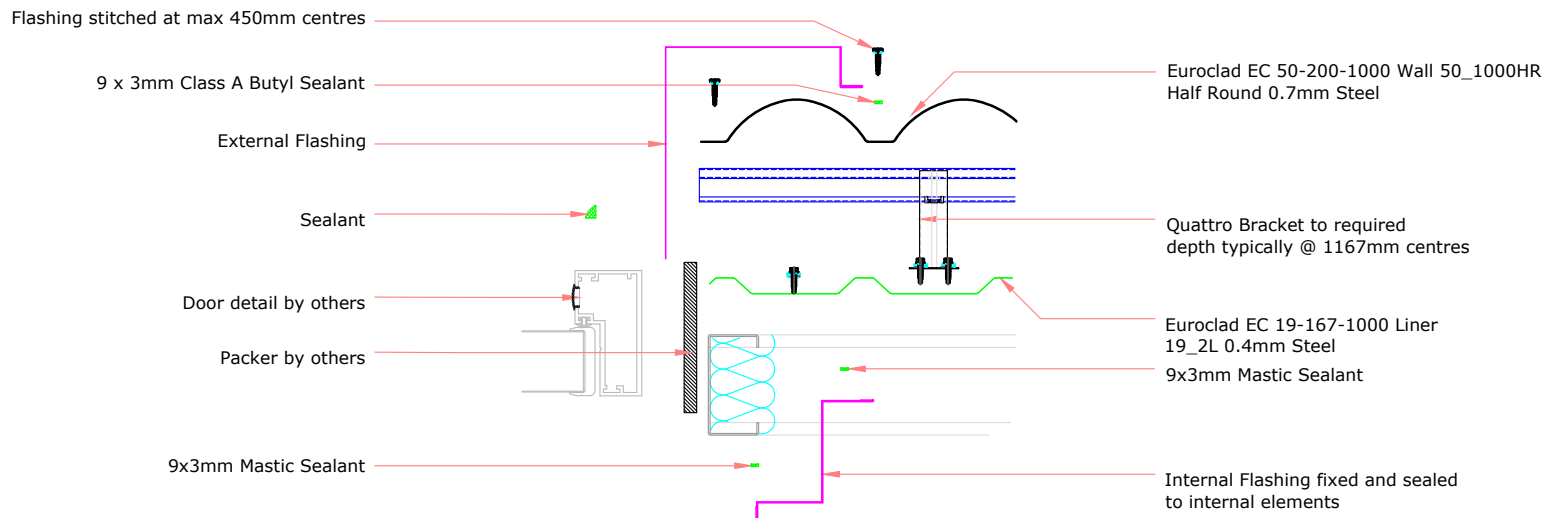
SCALE: NTS

This draft drawing has been supplied by Euroclad Group Ltd for the purpose of guidance free of charge. It is a suggested typical detail and as such should not be assumed suitable for any specific project or application. No responsibility is assumed for errors or misinterpretations resulting from the information contained in the drawing. Details are for illustration only and no liability is accepted. We reserve the right to change the details without notice. The drawing is copyright, it remains our property.

To be read in conjunction with Elite System specification documents



EUROCLAD ELITE SYSTEM 50 WALL CONSTRUCTION



Insulation excluded for clarity
A range of mineral & glass wool insulations are available for different requirements

ELITE SYSTEMS



www.euroclad.com
Tel: +44 (0)2922 010 101
Fax: +44 (0)2922 010 122

TITLE: Elite System 50

DWG NO: E50

DRAWN: CD

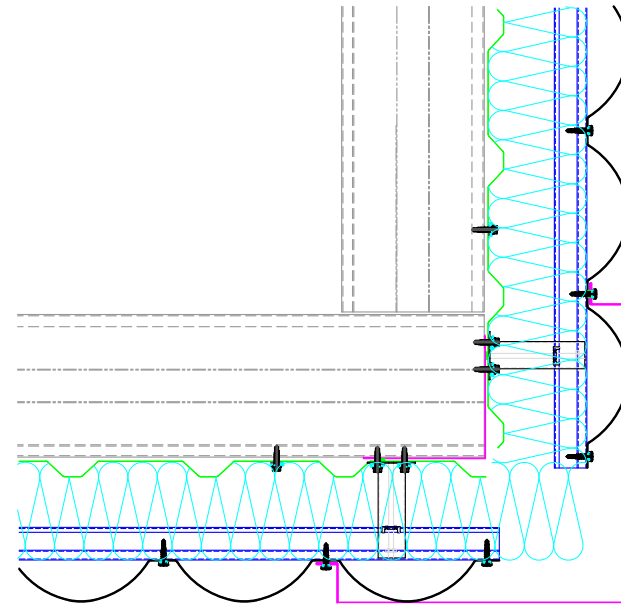
CHECK: MP

DATE: Jan 2020

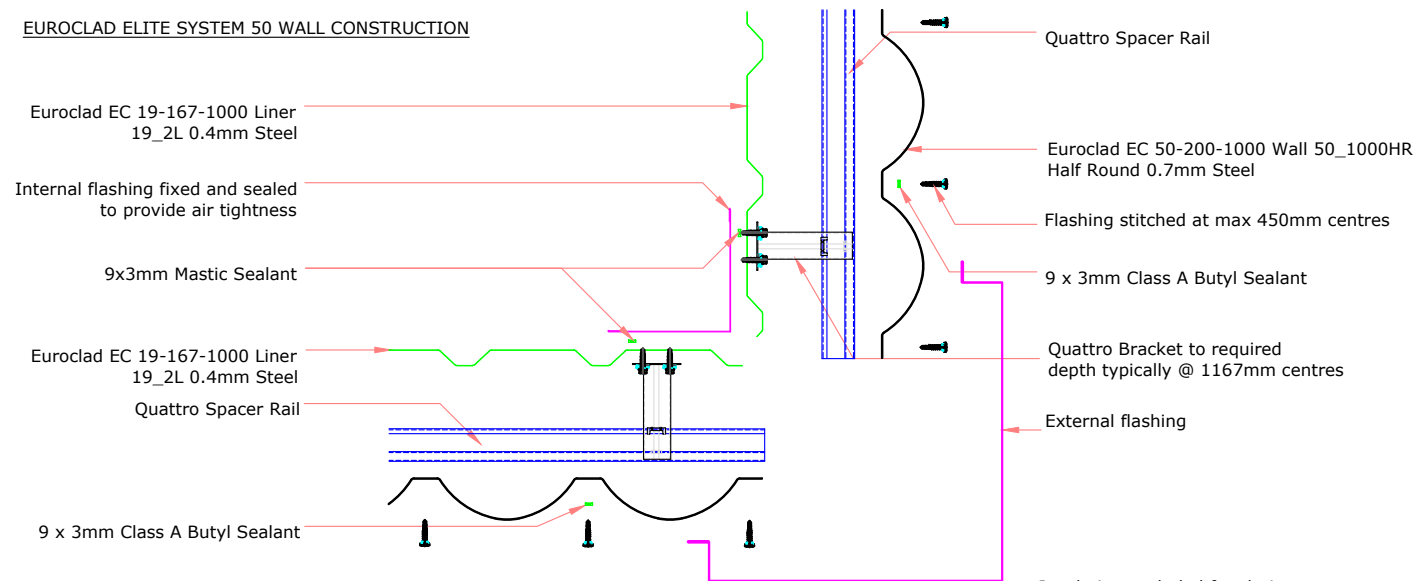
SCALE: NTS

This draft drawing has been supplied by Euroclad Group Ltd for the purpose of guidance free of charge. It is a suggested typical detail and as such should not be assumed suitable for any specific project or application. No responsibility is assumed for errors or misinterpretations resulting from the information contained in the drawing. Details are for illustration only and no liability is accepted. We reserve the right to change the details without notice. The drawing is copyright, it remains our property.

To be read in conjunction with Elite System specification documents



EUROCLAD ELITE SYSTEM 50 WALL CONSTRUCTION



Insulation excluded for clarity
A range of mineral & glass wool insulations are available for different requirements

ELITE SYSTEMS

EUROCLAD

www.euroclad.com
Tel: +44 (0)2922 010 101
Fax: +44 (0)2922 010 122

TITLE: Elite System 50

DWG NO: E50

DRAWN: CD

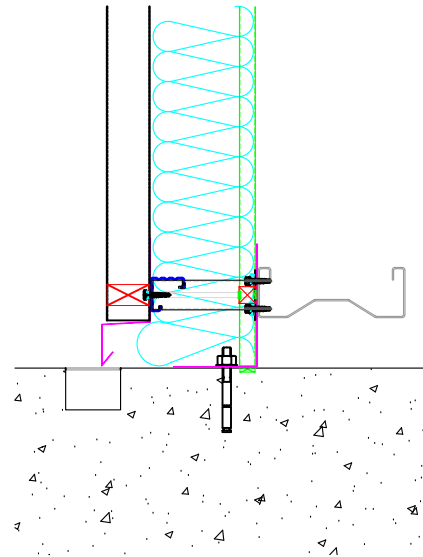
CHECK: MP

DATE: Jan 2020

SCALE: NTS

This draft drawing has been supplied by Euroclad Group Ltd for the purpose of guidance free of charge. It is a suggested typical detail and as such should not be assumed suitable for any specific project or application. No responsibility is assumed for errors or misinterpretations resulting from the information contained in the drawing. Details are for illustration only and no liability is accepted. We reserve the right to change the details without notice. The drawing is copyright, it remains our property.

To be read in conjunction with Elite System specification documents



EUROCLAD ELITE SYSTEM 50 WALL CONSTRUCTION

Euroclad 50/1000 Half Round 0.7 Steel

Quattro Bracket to required depth typically @ 1167mm centres

Profile Filler

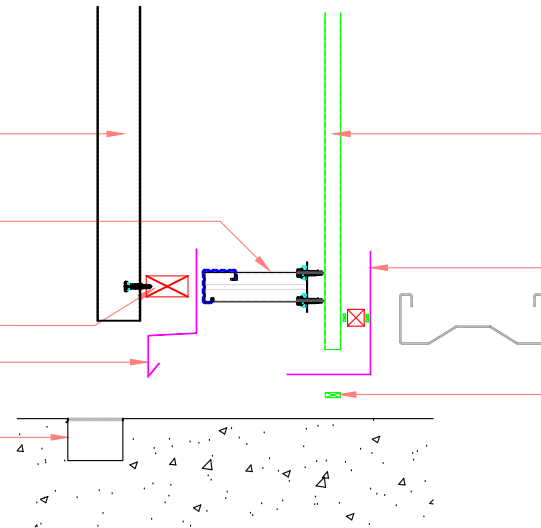
Drip Flashing

Drainage Point

Euroclad EC 19-167-1000 Liner
19_2L 0.4mm Steel

Internal Flashing and profile filler sealed to liner

Large amount of sealant to make allowance for imperfection in concrete and ensure good airtightness. Seal may be achieved at flashing or structural element such as ring beam, depending on project specific details.



Insulation excluded for clarity
A range of mineral & glass wool insulations are available for different requirements

TITLE: Elite System 50

DWG NO: E50

DRAWN: CD

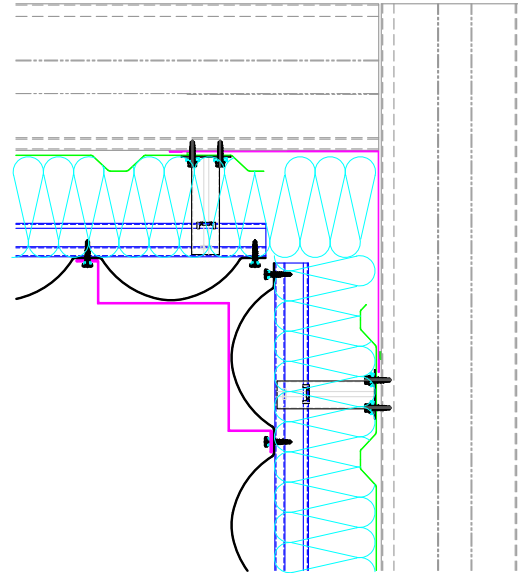
CHECK: MP

DATE: Jan 2020

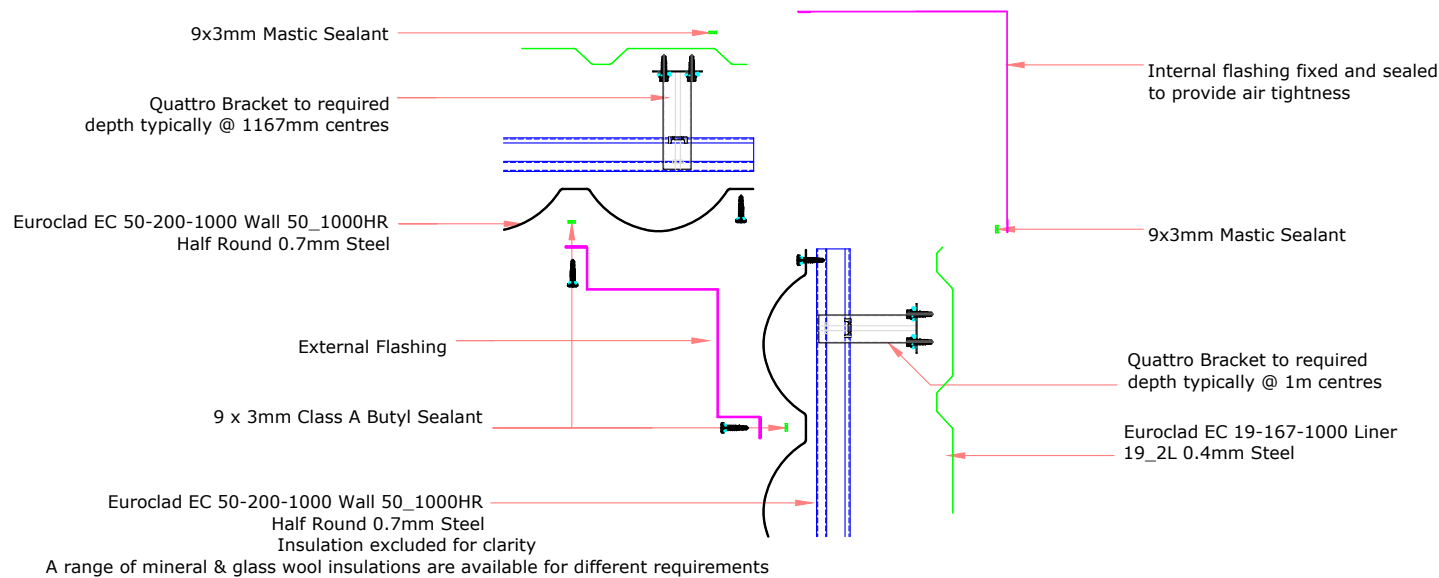
SCALE: NTS

This draft drawing has been supplied by Euroclad Group Ltd for the purpose of guidance free of charge. It is a suggested typical detail and as such should not be assumed suitable for any specific project or application. No responsibility is assumed for errors or misinterpretations resulting from the information contained in the drawing. Details are for illustration only and no liability is accepted. We reserve the right to change the details without notice. The drawing is copyright, it remains our property.

To be read in conjunction with Elite System specification documents



EUROCLAD ELITE SYSTEM 50 WALL CONSTRUCTION



ELITE SYSTEMS

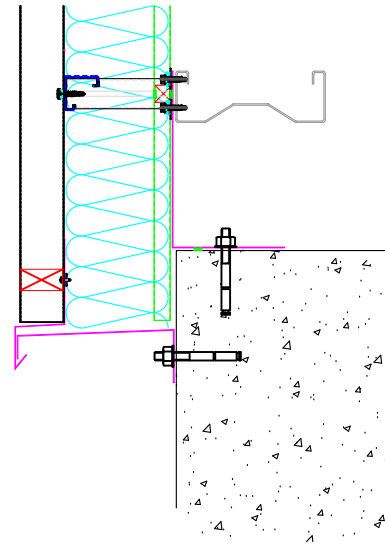


www.euroclad.com
Tel: +44 (0)2922 010 101
Fax: +44 (0)2922 010 122

TITLE: Elite System 50
DWG NO: E50
DRAWN: CD
CHECK: MP
DATE: Jan 2020
SCALE: NTS

This draft drawing has been supplied by Euroclad Group Ltd for the purpose of guidance free of charge. It is a suggested typical detail and as such should not be assumed suitable for any specific project or application. No responsibility is assumed for errors or misinterpretations resulting from the information contained in the drawing. Details are for illustration only and no liability is accepted. We reserve the right to change the details without notice. The drawing is copyright, it remains our property.

To be read in conjunction with Elite System specification documents



EUROCLAD ELITE SYSTEM 50 WALL CONSTRUCTION

Euroclad EC 50-200-1000 Wall 50_1000HR
Half Round 0.7mm Steel
Euroclad EC 19-167-1000 Liner
19_2L 0.4mm Steel

Quattro Bracket to required
depth typically @ 1167mm centres

Profile Filler
Drip Flashing
Closure Flashing

Closure Flashing fixed and profile filler
sealed to liner to provide air tightness

Large amount of sealant to make
allowance for imperfection in concrete and
ensure good airtightness. Seal may be achieved
at flashing or structural element such as ring beam,
depending on project specific details.

Insulation excluded for clarity
A range of mineral & glass wool insulations are available for different requirements

TITLE: Elite System 50

DWG NO: E50

DRAWN: CD

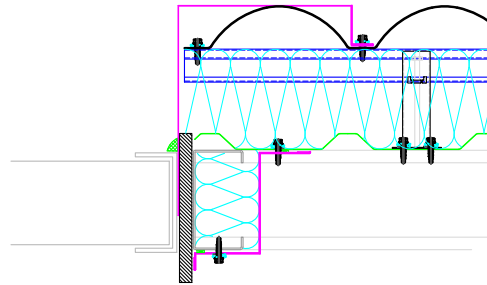
CHECK: MP

DATE: Jan 2020

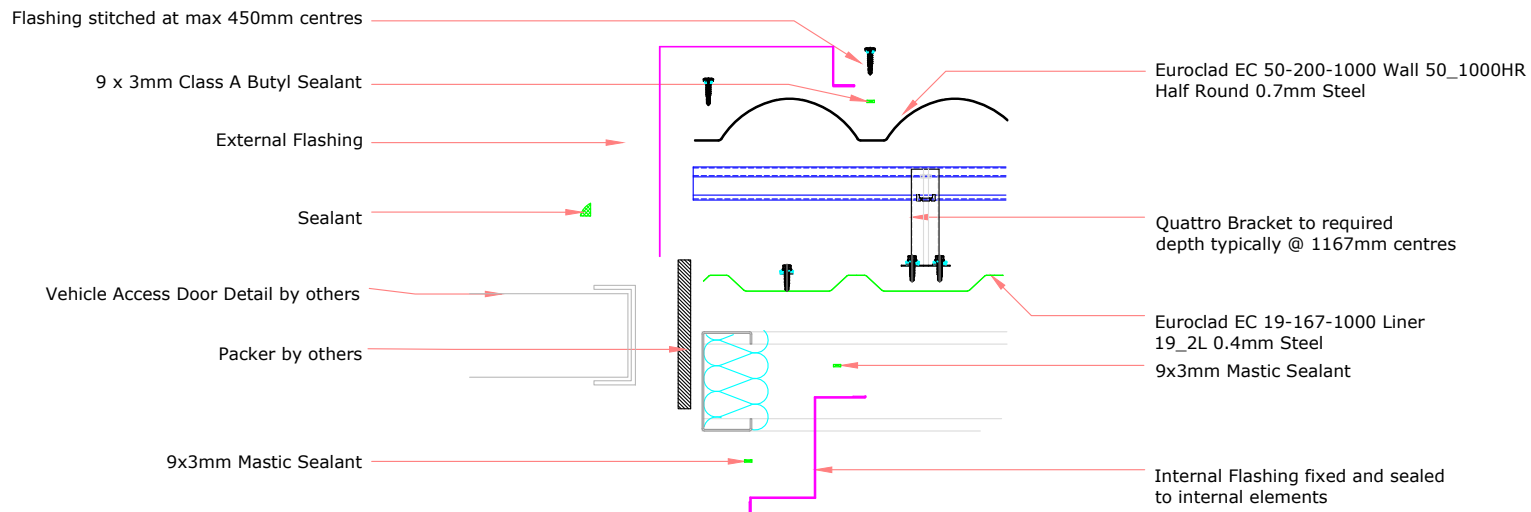
SCALE: NTS

This draft drawing has been supplied by Euroclad Group Ltd for the purpose of guidance free of charge. It is a suggested typical detail and as such should not be assumed suitable for any specific project or application. No responsibility is assumed for errors or misinterpretations resulting from the information contained in the drawing. Details are for illustration only and no liability is accepted. We reserve the right to change the details without notice. The drawing is copyright, it remains our property.

To be read in conjunction with Elite System specification documents



EUROCLAD ELITE SYSTEM 50 WALL CONSTRUCTION



Insulation excluded for clarity
A range of mineral & glass wool insulations are available for different requirements

ELITE SYSTEMS

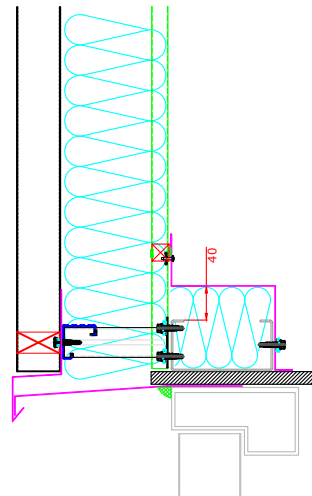


www.euroclad.com
Tel: +44 (0)2922 010 101
Fax: +44 (0)2922 010 122

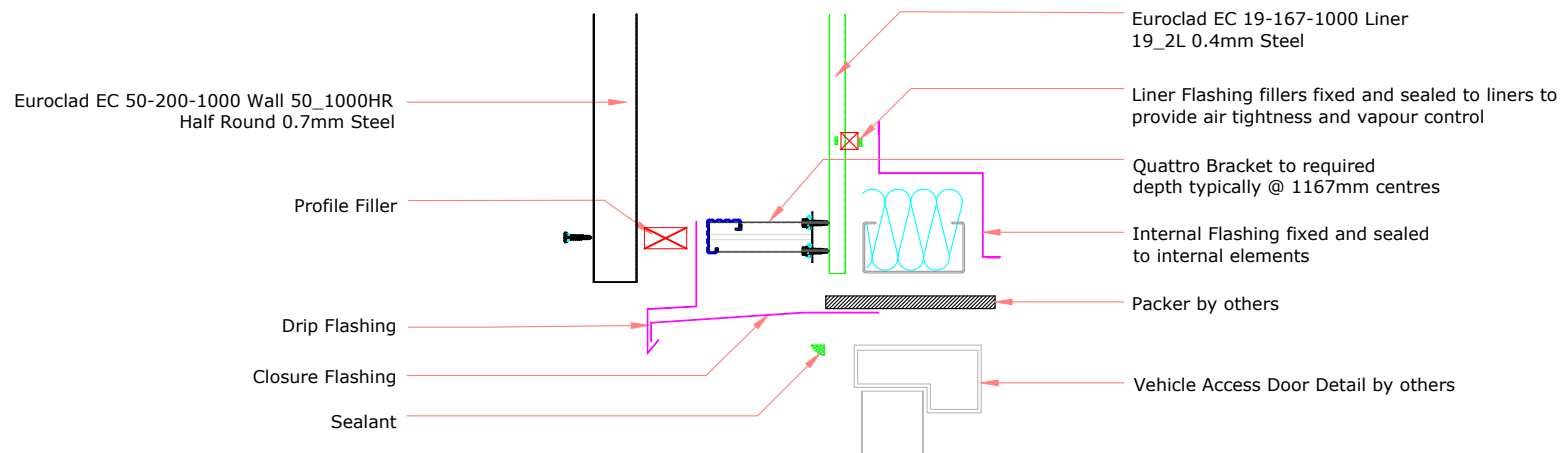
TITLE: Elite System 50
DWG NO: E50
DRAWN: CD
CHECK: MP
DATE: Jan 2020
SCALE: NTS

This draft drawing has been supplied by Euroclad Group Ltd for the purpose of guidance free of charge. It is a suggested typical detail and as such should not be assumed suitable for any specific project or application. No responsibility is assumed for errors or misinterpretations resulting from the information contained in the drawing. Details are for illustration only and no liability is accepted. We reserve the right to change the details without notice. The drawing is copyright, it remains our property.

To be read in conjunction with Elite System specification documents



EUROCLAD ELITE SYSTEM 50 WALL CONSTRUCTION



Insulation excluded for clarity
A range of mineral & glass wool insulations are available for different requirements

ELITE SYSTEMS

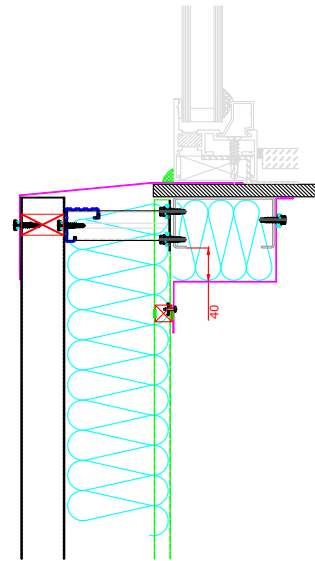


www.euroclad.com
Tel: +44 (0)2922 010 101
Fax: +44 (0)2922 010 122

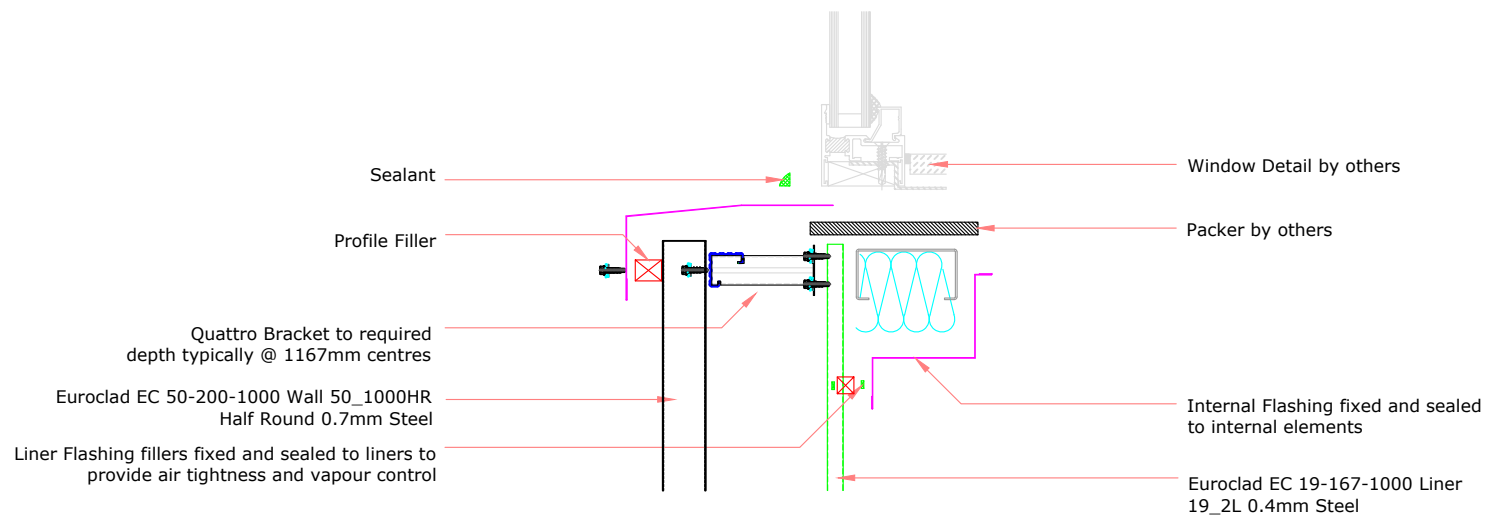
TITLE: Elite System 50
DWG NO: E50
DRAWN: CD
CHECK: MP
DATE: Jan 2020
SCALE: NTS

This draft drawing has been supplied by Euroclad Group Ltd for the purpose of guidance free of charge. It is a suggested typical detail and as such should not be assumed suitable for any specific project or application. No responsibility is assumed for errors or misinterpretations resulting from the information contained in the drawing. Details are for illustration only and no liability is accepted. We reserve the right to change the details without notice. The drawing is copyright, it remains our property.

To be read in conjunction with Elite System specification documents



EUROCLAD ELITE SYSTEM 50 WALL CONSTRUCTION



Insulation excluded for clarity
A range of mineral & glass wool insulations are available for different requirements

TITLE: Elite System 50

DWG NO: E50

DRAWN: CD

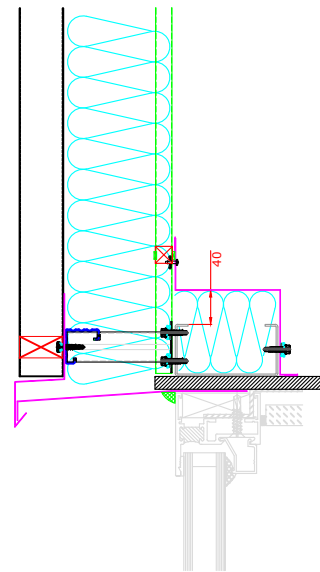
CHECK: MP

DATE: Jan 2020

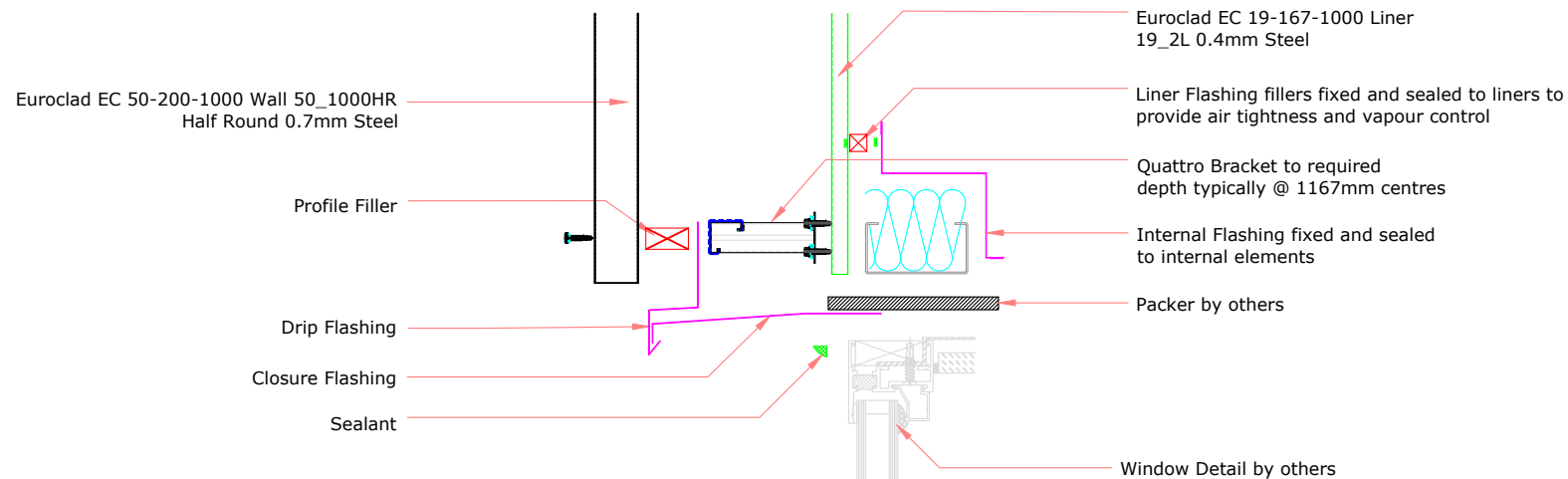
SCALE: NTS

This draft drawing has been supplied by Euroclad Group Ltd for the purpose of guidance free of charge. It is a suggested typical detail and as such should not be assumed suitable for any specific project or application. No responsibility is assumed for errors or misinterpretations resulting from the information contained in the drawing. Details are for illustration only and no liability is accepted. We reserve the right to change the details without notice. The drawing is copyright, it remains our property.

To be read in conjunction with Elite System specification documents



EUROCLAD ELITE SYSTEM 50 WALL CONSTRUCTION



Insulation excluded for clarity
A range of mineral & glass wool insulations are available for different requirements

TITLE: Elite System 50

DWG NO: E50

DRAWN: CD

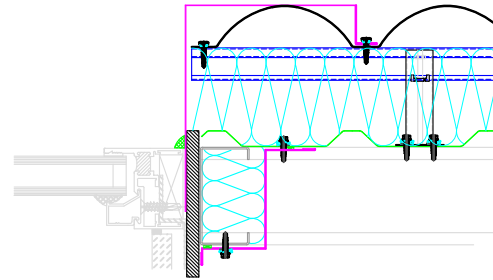
CHECK: MP

DATE: Jan 2020

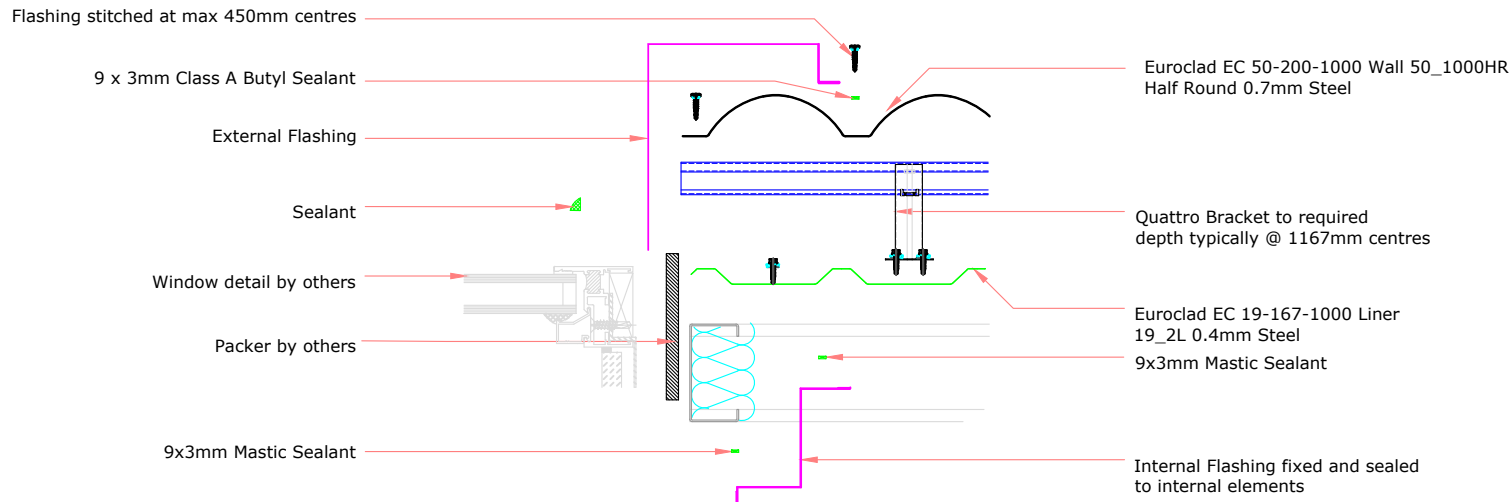
SCALE: NTS

This draft drawing has been supplied by Euroclad Group Ltd for the purpose of guidance free of charge. It is a suggested typical detail and as such should not be assumed suitable for any specific project or application. No responsibility is assumed for errors or misinterpretations resulting from the information contained in the drawing. Details are for illustration only and no liability is accepted. We reserve the right to change the details without notice. The drawing is copyright, it remains our property.

To be read in conjunction with Elite System specification documents



EUROCLAD ELITE SYSTEM 50 WALL CONSTRUCTION



Insulation excluded for clarity
A range of mineral & glass wool insulations are available for different requirements