



<b>TITLE: Vieo Horizontal Wall Covering (On Ply or OSB)</b>
<b>DWG NO: V11_HWC_TD_System</b>
<b>SCALE: NTS</b>
<b>ISSUE DATE: Sep 2018</b>

(To be read in conjunction with Vieo system specification documents)

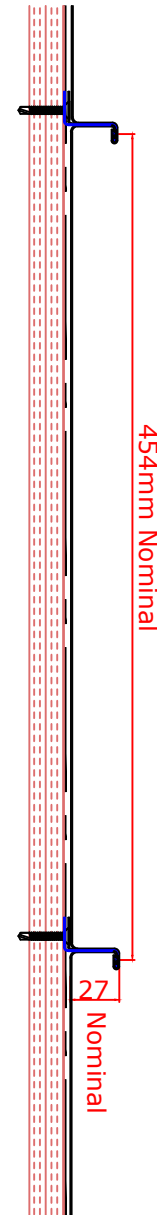
**Euro Clad Ltd,  
Wentloog Corporate Park,  
Wentloog Road, Cardiff CF3 2ER  
Tel: +44 (0)2922 010101  
Fax: +44 (0)2922 010122  
Website: [www.vieorooft.com](http://www.vieorooft.com)**

Drawn by: PCI Checked by: MP

This draft drawing has been supplied by Euro Clad Ltd for the purpose of guidance free of charge. It is a suggested typical detail and as such should not be assumed suitable for any specific project or application. No responsibility is assumed for errors or misinterpretations resulting from the information contained in the drawing. Details are for illustration only and no liability is accepted. We reserve the right to change the details without notice. The drawing is copyright, it remains our property.

**Standard offer is 454mm profile.**  
Also available on request in other widths from 225mm to 517mm.

Ply/Timber/OSB facing  
by Others in accordance  
with relevant standards.





<b>TITLE: Vieo Horizontal Wall Covering (On Ply or OSB)</b>
<b>DWG NO: V11_HWC_TD_System</b>
<b>SCALE: NTS</b>
<b>ISSUE DATE: Sep 2018</b>

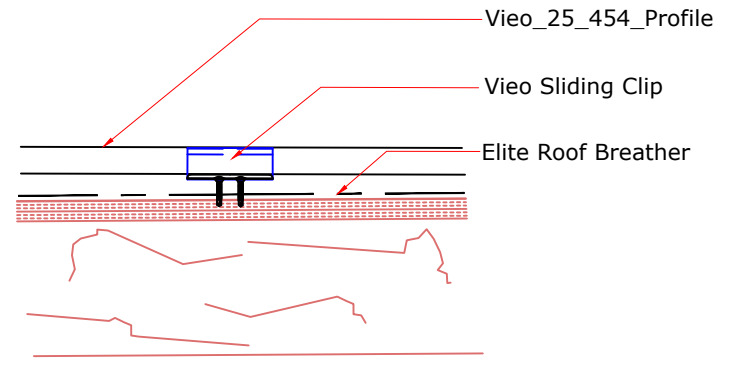
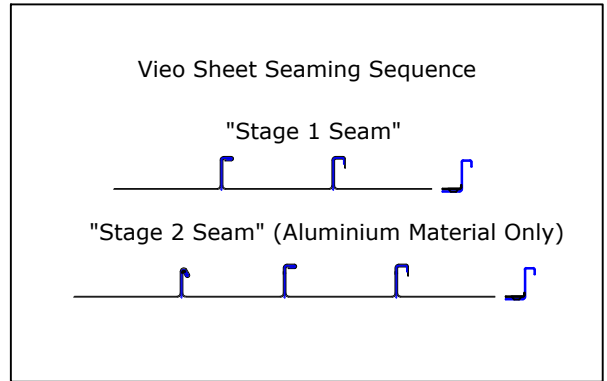
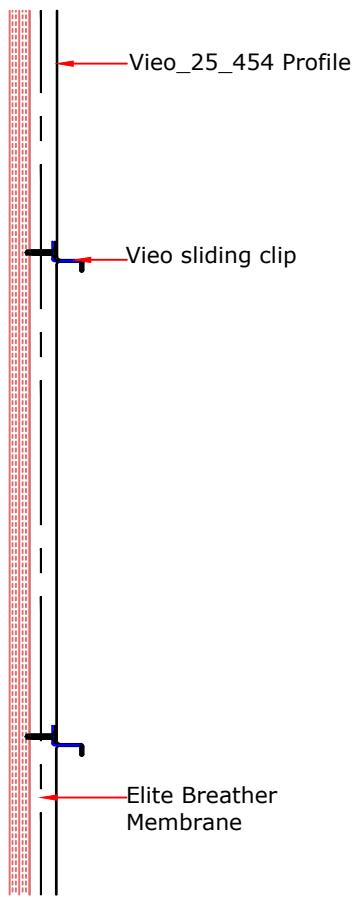
(To be read in conjunction with Vieo system specification documents)

**Euro Clad Ltd,**  
**Wentloog Corporate Park,**  
**Wentloog Road, Cardiff CF3 2ER**  
**Tel: +44 (0)2922 010101**  
**Fax: +44 (0)2922 010122**  
**Website: [www.vieoroof.com](http://www.vieoroof.com)**

This draft drawing has been supplied by Euro Clad Ltd for the purpose of guidance free of charge. It is a suggested typical detail and as such should not be assumed suitable for any specific project or application. No responsibility is assumed for errors or misinterpretations resulting from the information contained in the drawing. Details are for illustration only and no liability is accepted. We reserve the right to change the details without notice. The drawing is copyright, it remains our property.

Drawn by: PCI Checked by: MP

Ply/Timber/OSB facing by Others in accordance with relevant standards.



Ply/Timber/OSB facing by Others in accordance with relevant standards.

**TYPICAL ARRANGEMENT: 1260mm IN CENTRAL AREAS, REDUCE CLIP CENTRES AT CORNERS AND IN HIGH LOAD AREAS.**

**CHECK SYSTEM CAPACITY AGAINST PROJECT LOADS AND ADJUST IF NECESSARY**

**CLIP TYPICAL CENTRES (APPLICABLE FOR STAGE 1 ALUMINIUM VIEO SHEETS ONLY):**

**DETERMINED BY PROJECT WIND SUCTION LOADS AS FOLLOWS:**

- 1260mm for loads up to 0.8kN/M<sup>2</sup>**
- 660mm for loads 0.8 to 1.2kN/M<sup>2</sup>**
- 300mm for loads 1.2 to 3kN/M<sup>2</sup>**
- Where substrate is Min 18mm ply or Min 15mm OSB 3**

**IF HIGHER WIND LOADS ARE ANTICIPATED PLEASE REFER TO BELOW;**

**CLIP TYPICAL CENTRES (APPLICABLE FOR STAGE 2 ALUMINIUM VIEO SHEETS AND STAGE 1 STEEL VIEO SHEETS):**

- 1260mm for loads up to 1.5kN/M<sup>2</sup>**
- 660mm for loads 1.5 to 2.0kN/M<sup>2</sup>**
- 300mm for loads 2 to 4kN/M<sup>2</sup>**
- Where substrate is Min 18mm ply or Min 15mm OSB 3**



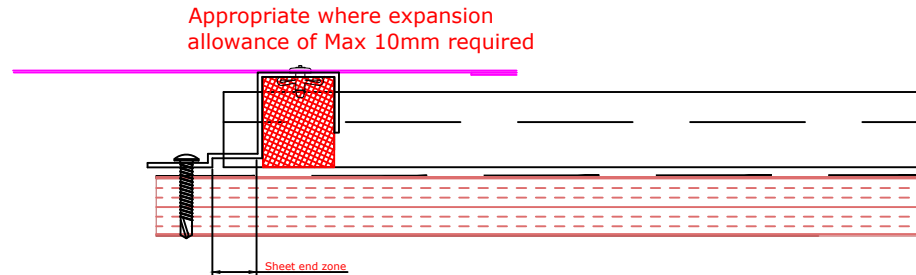
<b>TITLE: Vieo Horizontal Wall Covering (On Ply or OSB)</b>
<b>DWG NO: V11_HWC_TD_System</b>
<b>SCALE: NTS</b>
<b>ISSUE DATE: Sep 2018</b>

(To be read in conjunction with Vieo system specification documents)

**Euro Clad Ltd,**  
**Wentloog Corporate Park,**  
**Wentloog Road, Cardiff CF3 2ER**  
**Tel: +44 (0)2922 010101**  
**Fax: +44 (0)2922 010122**  
**Website: [www.vieorooft.com](http://www.vieorooft.com)**

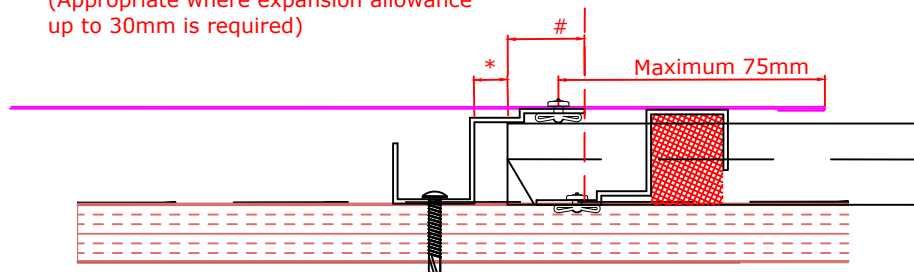
This draft drawing has been supplied by Euro Clad Ltd for the purpose of guidance free of charge. It is a suggested typical detail and as such should not be assumed suitable for any specific project or application. No responsibility is assumed for errors or misinterpretations resulting from the information contained in the drawing. Details are for illustration only and no liability is accepted. We reserve the right to change the details without notice. The drawing is copyright, it remains our property.

**Movement allowed under flashings.**  
**Closure with flashing fixed to decking and not through sheet.**  
**Maximum allowable distance to next Vieo clip 300mm from closure fixing**  
**Cover flashings fixed to structure and Vieo Closure**



**Maximum allowable to next Vieo clip 300mm**

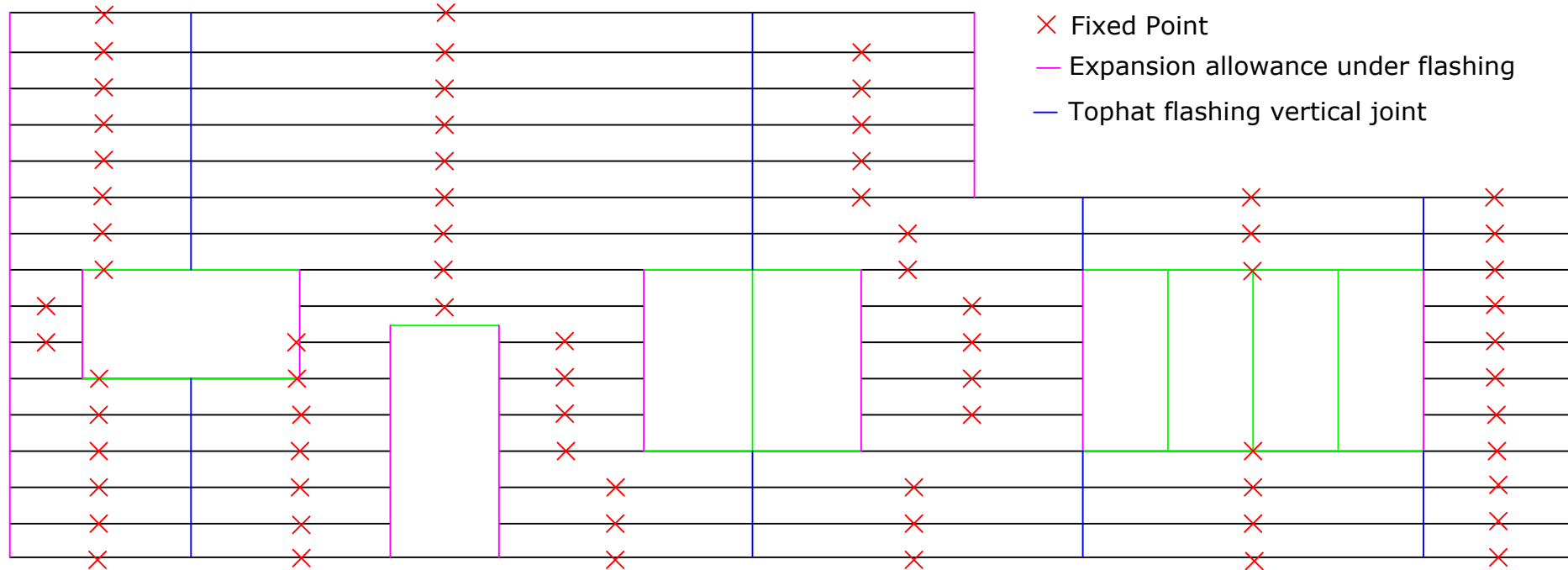
Flashing fixed to inverted Ridge Closure  
(Appropriate where expansion allowance up to 30mm is required)



**Rivet closure to sheet prior to application**

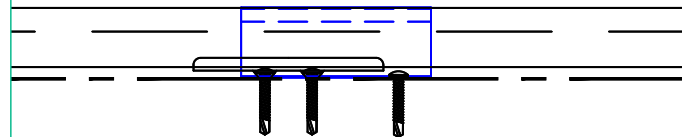
**\* Allow clearance for anticipated movement between support Closure, end of Vieo sheet & Ridge Closure**

**# end of Vieo sheet must fall under downslope edge of inverted Closure**



- × Fixed Point
- Expansion allowance under flashing
- Tophat flashing vertical joint

**Create fixed point using clip with additional fixing.  
 Max sheet length 20M. For handling purposes this should be reduced.  
 To divide expansion clearance required create fixed point in middle of sheet.**



**Assembled Front View**





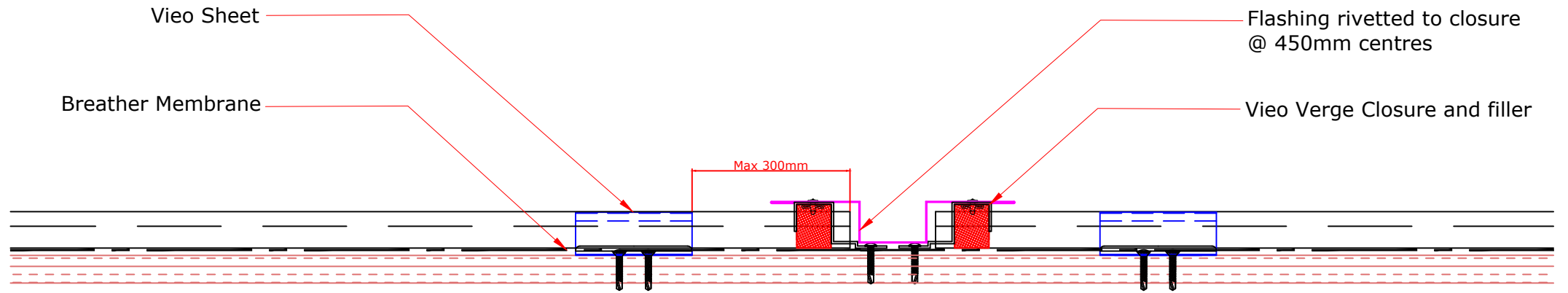
**TITLE: Vieo Horizontal Wall Covering (On Ply or OSB)**  
**DWG NO: V11\_HWC\_TD\_System**  
**SCALE: NTS**  
**ISSUE DATE: Sep 2018**

Drawn by: PCI Checked by: MP

(To be read in conjunction with Vieo system specification documents)

**Euro Clad Ltd,**  
**Wentloog Corporate Park,**  
**Wentloog Road, Cardiff CF3 2ER**  
**Tel: +44 (0)2922 010101**  
**Fax: +44 (0)2922 010122**  
**Website: [www.vieorooft.com](http://www.vieorooft.com)**

This draft drawing has been supplied by Euro Clad Ltd for the purpose of guidance free of charge. It is a suggested typical detail and as such should not be assumed suitable for any specific project or application. No responsibility is assumed for errors or misinterpretations resulting from the information contained in the drawing. Details are for illustration only and no liability is accepted. We reserve the right to change the details without notice. The drawing is copyright, it remains our property.





**TITLE: Vieo Horizontal Wall Covering (On Ply or OSB)**

**DWG NO: V11\_HWC\_TD\_System**

**SCALE: NTS**

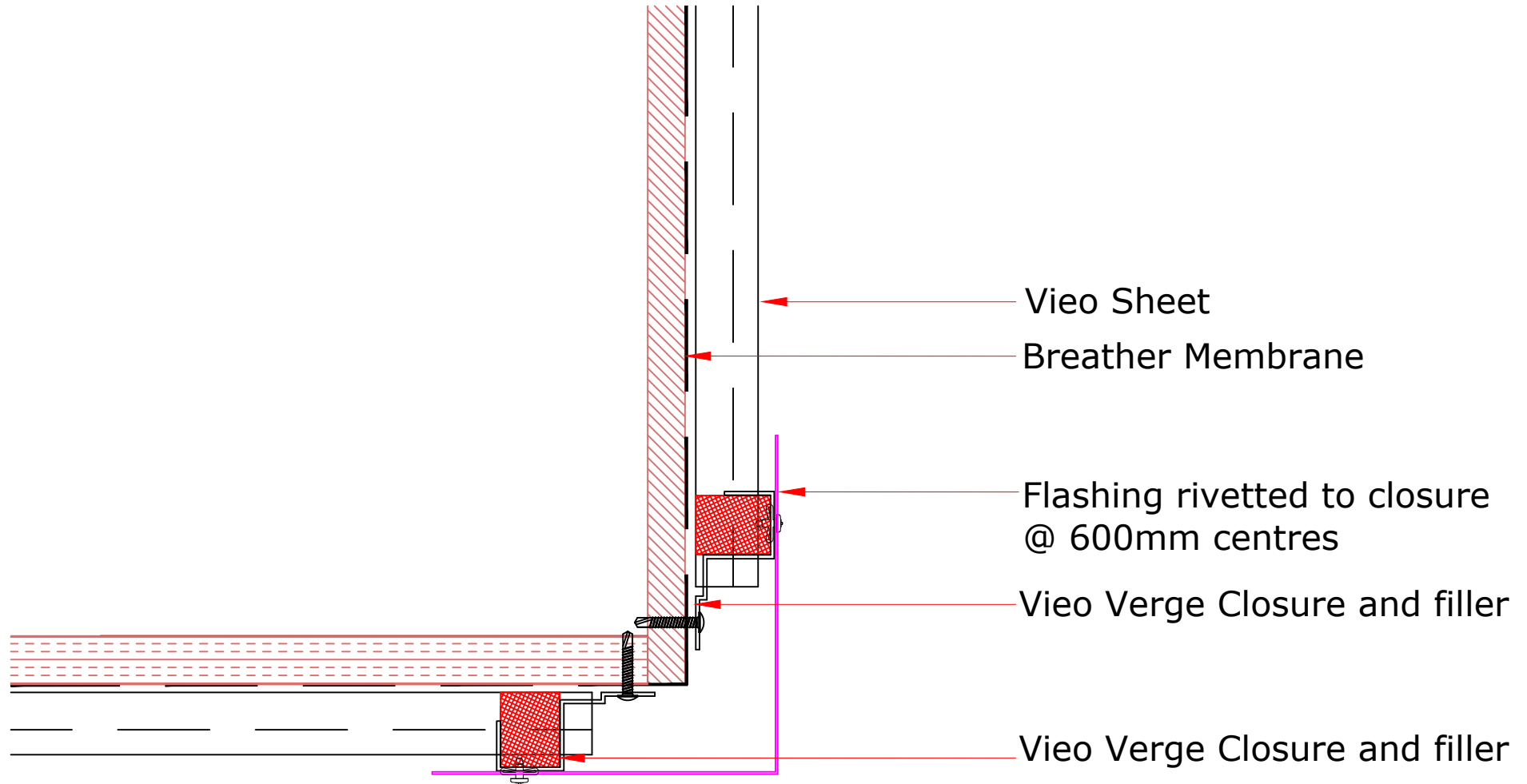
**ISSUE DATE: Sep 2018**

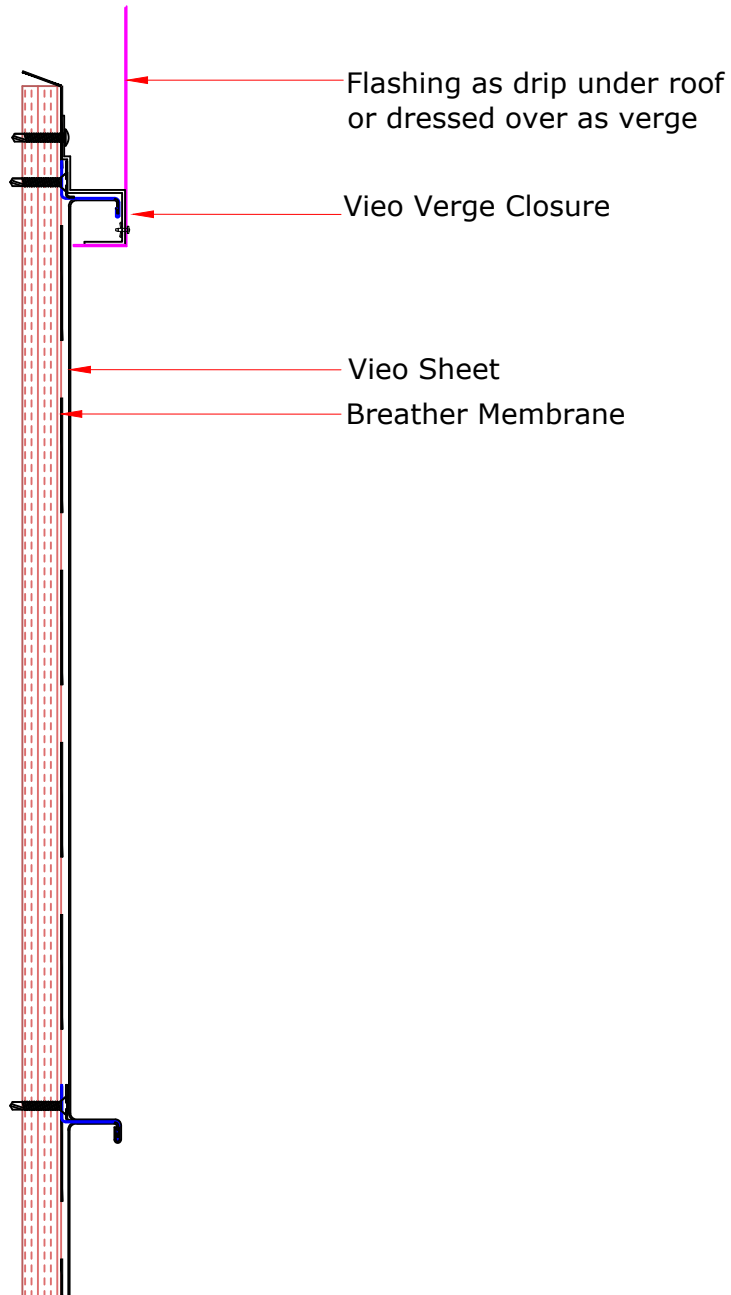
Drawn by: PCI Checked by: MP

(To be read in conjunction with Vieo system specification documents)

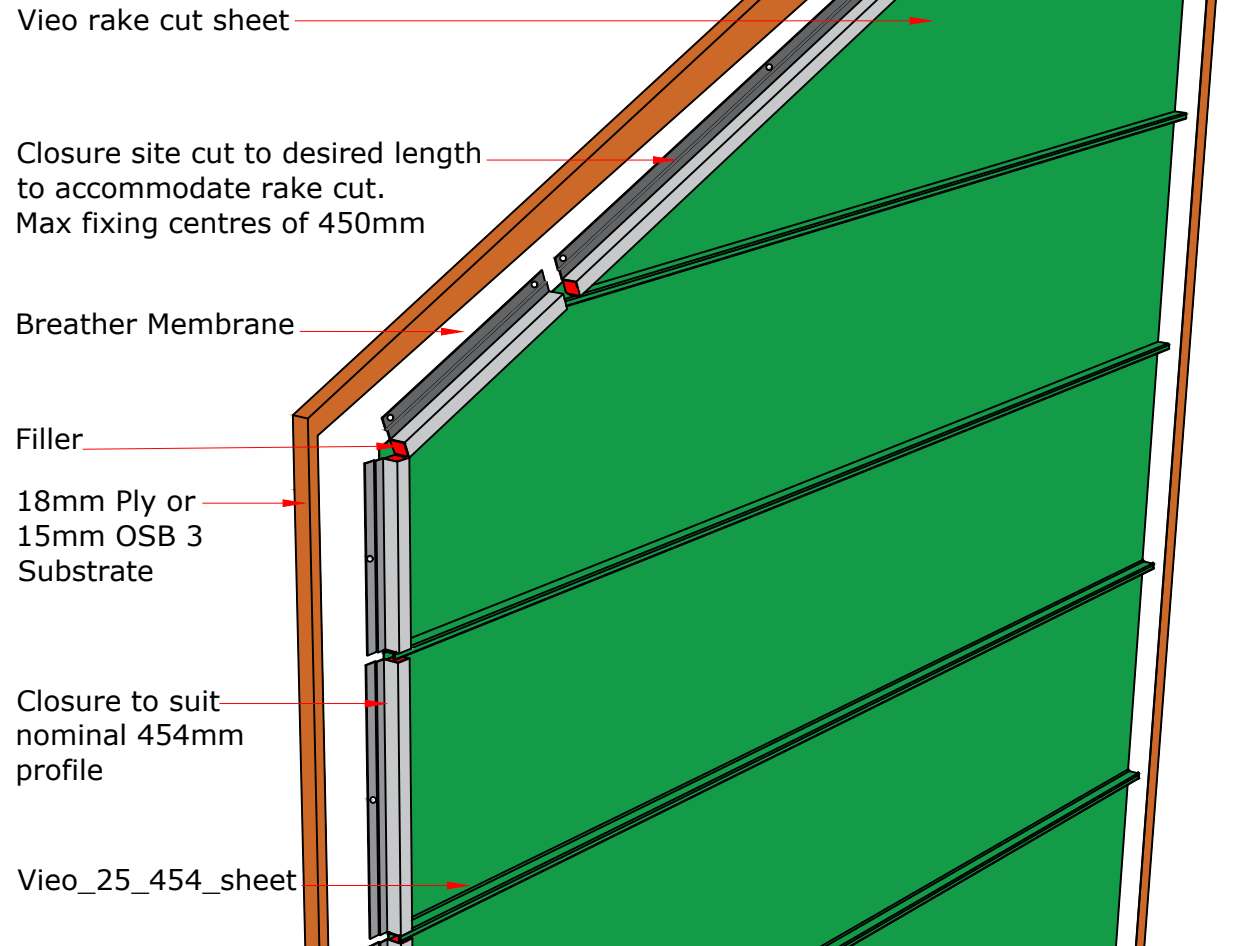
**Euro Clad Ltd,  
Wentloog Corporate Park,  
Wentloog Road, Cardiff CF3 2ER  
Tel: +44 (0)2922 010101  
Fax: +44 (0)2922 010122  
Website: [www.vieorooft.com](http://www.vieorooft.com)**

This draft drawing has been supplied by Euro Clad Ltd for the purpose of guidance free of charge. It is a suggested typical detail and as such should not be assumed suitable for any specific project or application. No responsibility is assumed for errors or misinterpretations resulting from the information contained in the drawing. Details are for illustration only and no liability is accepted. We reserve the right to change the details without notice. The drawing is copyright, it remains our property.



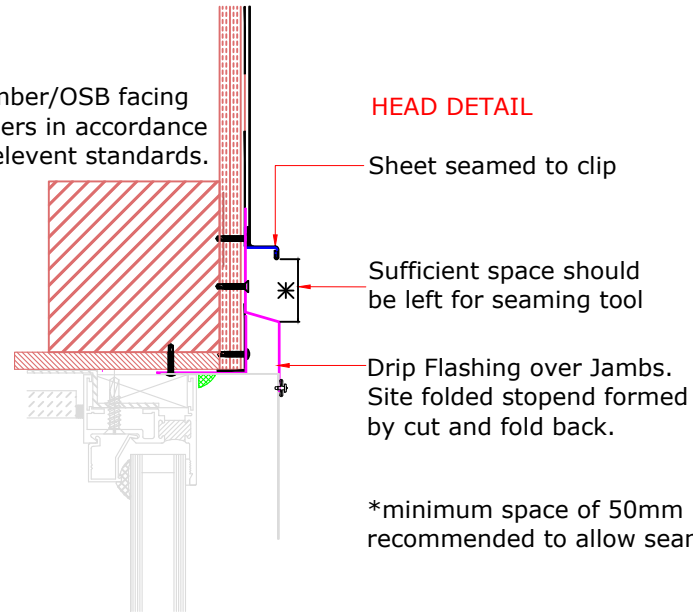


At gable ends it is normally necessary to use rake cut sheets with bespoke length fillers and closure sections. In some cases it may be possible to detail tapered sheets or flashings.



Ply/Timber/OSB facing by Others in accordance with relevant standards.

**HEAD DETAIL**



Sheet seamed to clip

Sufficient space should be left for seaming tool

Drip Flashing over Jamb. Site folded stop end formed by cut and fold back.

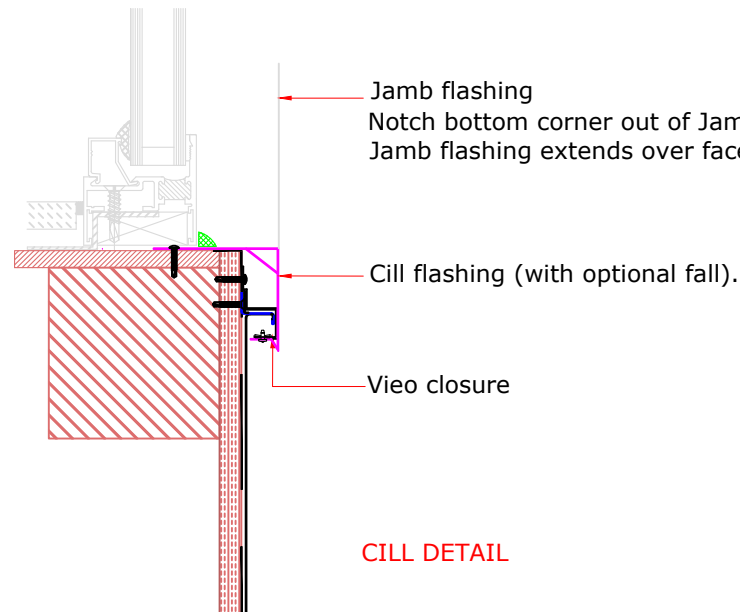
\*minimum space of 50mm recommended to allow seaming

Jamb flashing  
 Notch bottom corner out of Jamb & Cill flashings on site.  
 Jamb flashing extends over face of Cill.

Cill flashing (with optional fall).

Vieo closure

**CILL DETAIL**







<b>TITLE: Vieo Horizontal Wall Covering (On Ply or OSB)</b>
<b>DWG NO: V11_HWC_TD_System</b>
<b>SCALE: NTS</b>
<b>ISSUE DATE: Sep 2018</b>

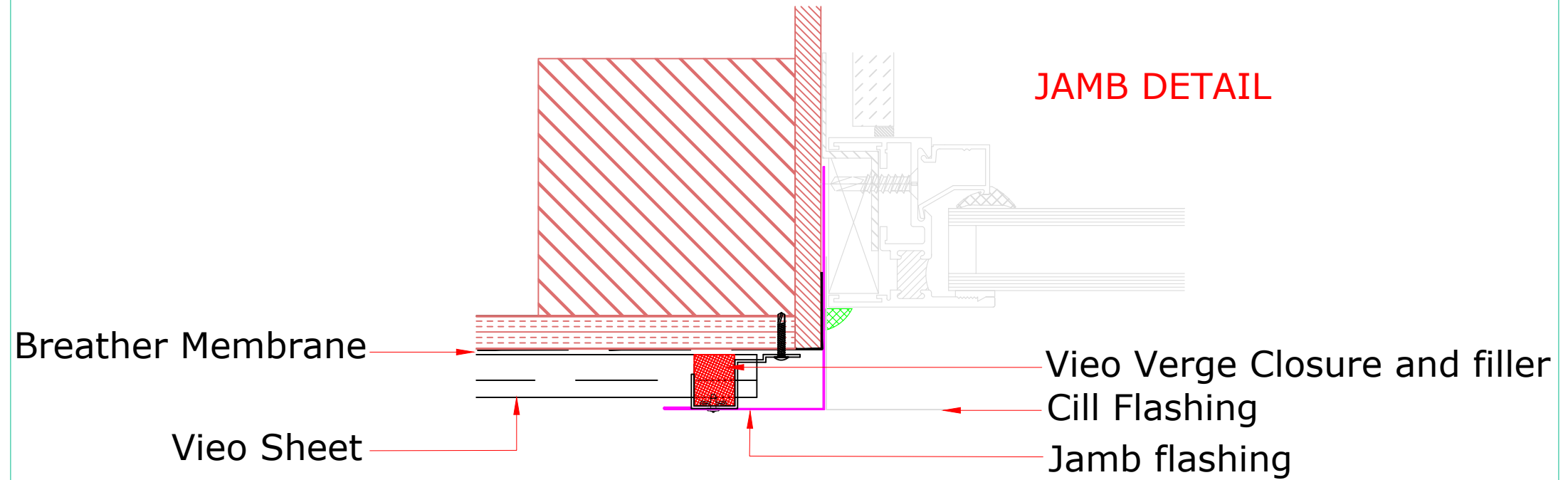
(To be read in conjunction with Vieo system specification documents)

**Euro Clad Ltd,**  
**Wentloog Corporate Park,**  
**Wentloog Road, Cardiff CF3 2ER**  
**Tel: +44 (0)2922 010101**  
**Fax: +44 (0)2922 010122**  
**Website: [www.vieorooft.com](http://www.vieorooft.com)**

This draft drawing has been supplied by Euro Clad Ltd for the purpose of guidance free of charge. It is a suggested typical detail and as such should not be assumed suitable for any specific project or application. No responsibility is assumed for errors or misinterpretations resulting from the information contained in the drawing. Details are for illustration only and no liability is accepted. We reserve the right to change the details without notice. The drawing is copyright, it remains our property.

Drawn by: PCI Checked by: MP

## JAMB DETAIL





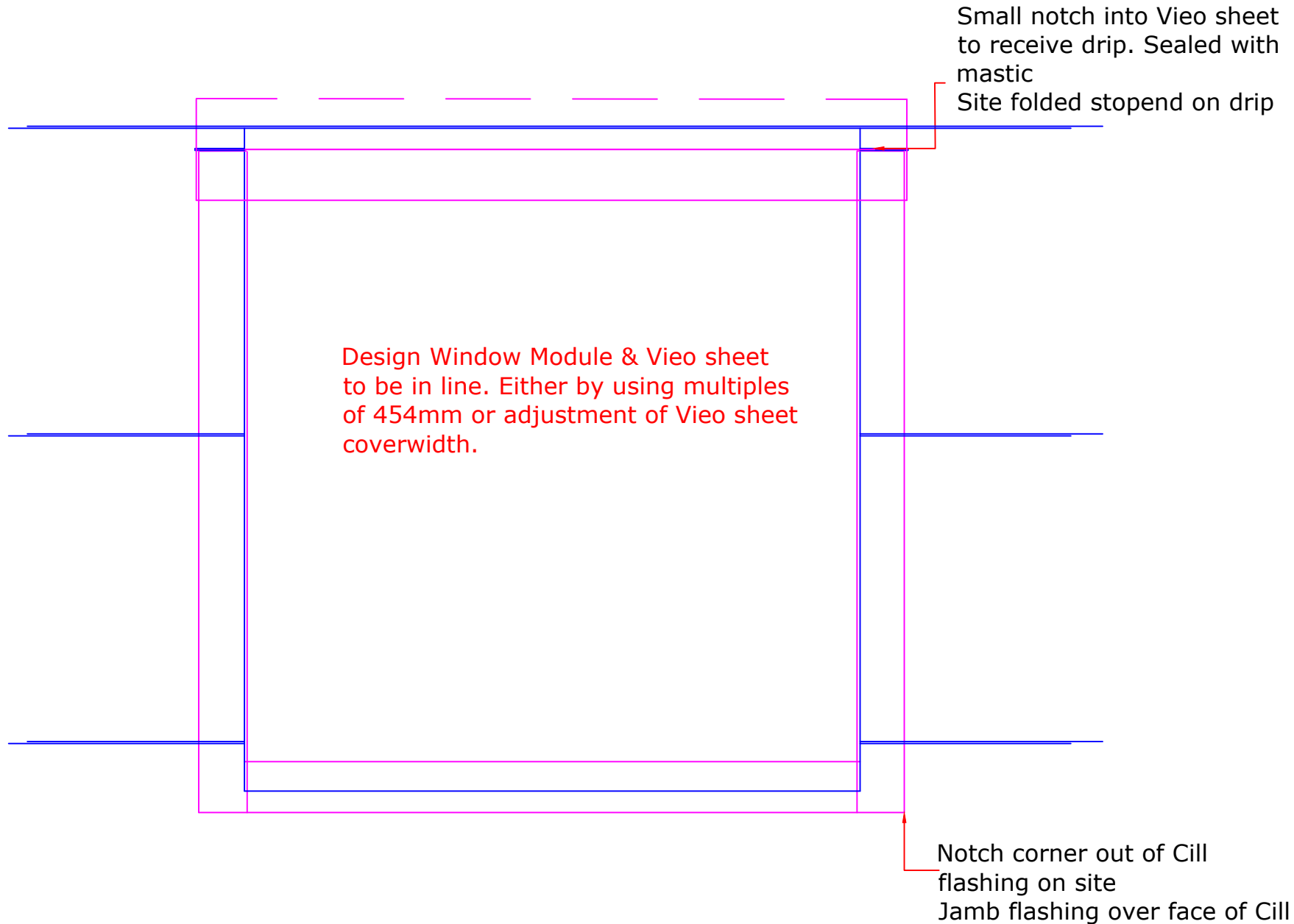
<b>TITLE: Vieo Horizontal Wall Covering (On Ply or OSB)</b>
<b>DWG NO: V11_HWC_TD_System</b>
<b>SCALE: NTS</b>
<b>ISSUE DATE: Sep 2018</b>

Drawn by: PCI Checked by: MP

(To be read in conjunction with Vieo system specification documents)

**Euro Clad Ltd,  
Wentloog Corporate Park,  
Wentloog Road, Cardiff CF3 2ER  
Tel: +44 (0)2922 010101  
Fax: +44 (0)2922 010122  
Website: [www.vieorooft.com](http://www.vieorooft.com)**

This draft drawing has been supplied by Euro Clad Ltd for the purpose of guidance free of charge. It is a suggested typical detail and as such should not be assumed suitable for any specific project or application. No responsibility is assumed for errors or misinterpretations resulting from the information contained in the drawing. Details are for illustration only and no liability is accepted. We reserve the right to change the details without notice. The drawing is copyright, it remains our property.





<b>TITLE: Vieo Horizontal Wall Covering (On Ply or OSB)</b>
<b>DWG NO: V11_HWC_TD_System</b>
<b>SCALE: NTS</b>
<b>ISSUE DATE: Sep 2018</b>

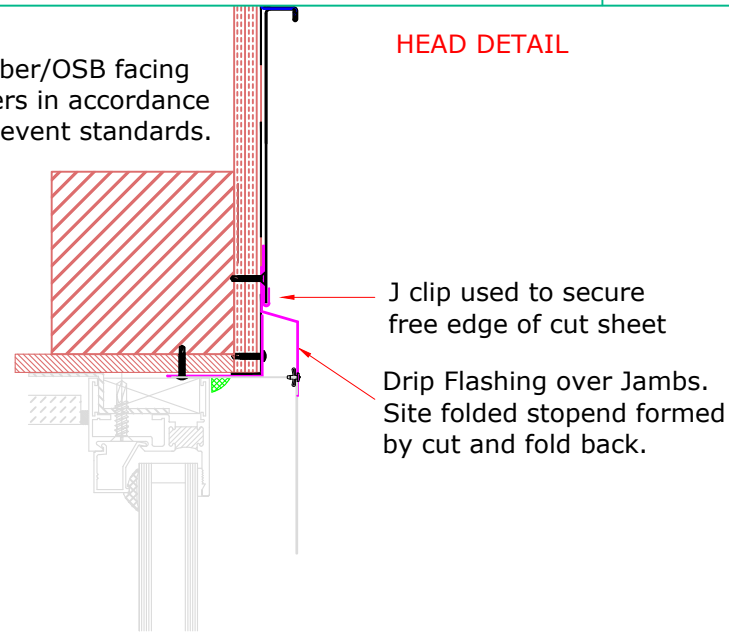
(To be read in conjunction with Vieo system specification documents)

**Euro Clad Ltd,  
Wentloog Corporate Park,  
Wentloog Road, Cardiff CF3 2ER  
Tel: +44 (0)2922 010101  
Fax: +44 (0)2922 010122  
Website: [www.vieorooft.com](http://www.vieorooft.com)**

This draft drawing has been supplied by Euro Clad Ltd for the purpose of guidance free of charge. It is a suggested typical detail and as such should not be assumed suitable for any specific project or application. No responsibility is assumed for errors or misinterpretations resulting from the information contained in the drawing. Details are for illustration only and no liability is accepted. We reserve the right to change the details without notice. The drawing is copyright, it remains our property.

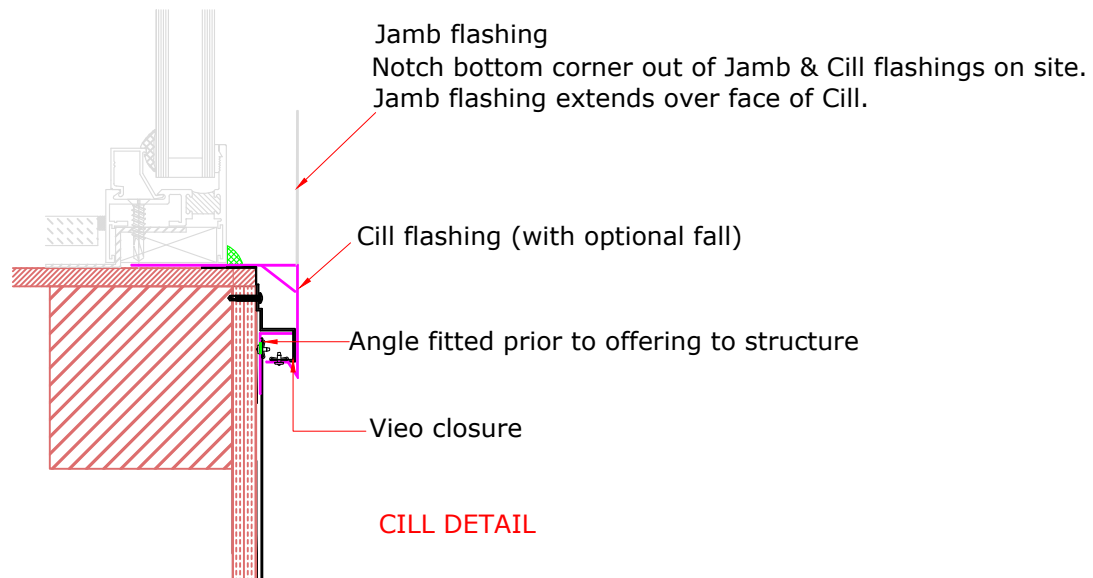
Ply/Timber/OSB facing  
by Others in accordance  
with relevent standards.

### HEAD DETAIL



J clip used to secure  
free edge of cut sheet

Drip Flashing over Jambs.  
Site folded stopend formed  
by cut and fold back.



Jamb flashing  
Notch bottom corner out of Jamb & Cill flashings on site.  
Jamb flashing extends over face of Cill.

Cill flashing (with optional fall)

Angle fitted prior to offering to structure

Vieo closure

### CILL DETAIL

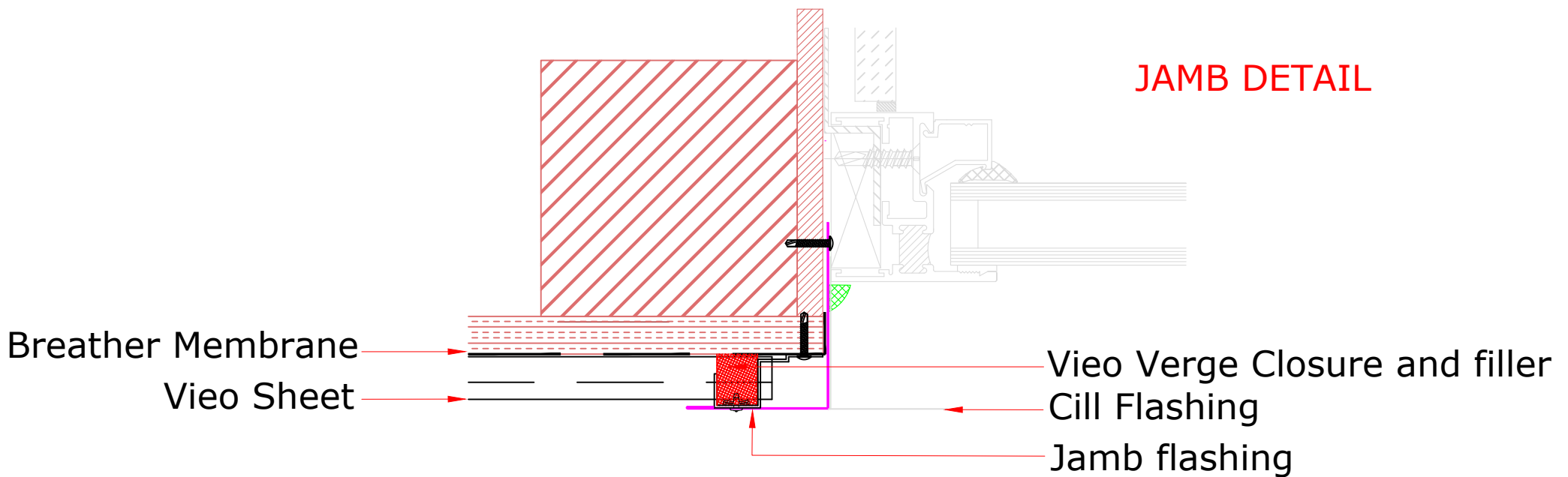


<b>TITLE: Vieo Horizontal Wall Covering (On Ply or OSB)</b>
<b>DWG NO: V11_HWC_TD_System</b>
<b>SCALE: NTS</b>
<b>ISSUE DATE: Sep 2018</b>

(To be read in conjunction with Vieo system specification documents)

**Euro Clad Ltd,**  
**Wentloog Corporate Park,**  
**Wentloog Road, Cardiff CF3 2ER**  
**Tel: +44 (0)2922 010101**  
**Fax: +44 (0)2922 010122**  
**Website: [www.vieoroof.com](http://www.vieoroof.com)**

This draft drawing has been supplied by Euro Clad Ltd for the purpose of guidance free of charge. It is a suggested typical detail and as such should not be assumed suitable for any specific project or application. No responsibility is assumed for errors or misinterpretations resulting from the information contained in the drawing. Details are for illustration only and no liability is accepted. We reserve the right to change the details without notice. The drawing is copyright, it remains our property.





**TITLE: Vieo Horizontal Wall Covering (On Ply or OSB)**  
**DWG NO: V11\_HWC\_TD\_System**  
**SCALE: NTS**  
**ISSUE DATE: Sep 2018**

(To be read in conjunction with Vieo system specification documents)

**Euro Clad Ltd,  
Wentloog Corporate Park,  
Wentloog Road, Cardiff CF3 2ER  
Tel: +44 (0)2922 010101  
Fax: +44 (0)2922 010122  
Website: [www.vieorooft.com](http://www.vieorooft.com)**

This draft drawing has been supplied by Euro Clad Ltd for the purpose of guidance free of charge. It is a suggested typical detail and as such should not be assumed suitable for any specific project or application. No responsibility is assumed for errors or misinterpretations resulting from the information contained in the drawing. Details are for illustration only and no liability is accepted. We reserve the right to change the details without notice. The drawing is copyright, it remains our property.

Drawn by: PCI Checked by: MP

Ply/Timber/OSB facing  
by Others in accordance  
with relevent standards.

Vieo Sheet  
Breather Membrane

Sheet seamed to clip  
Clip and lacquer visible  
from underneath  
Allow space  
for hand seaming tool

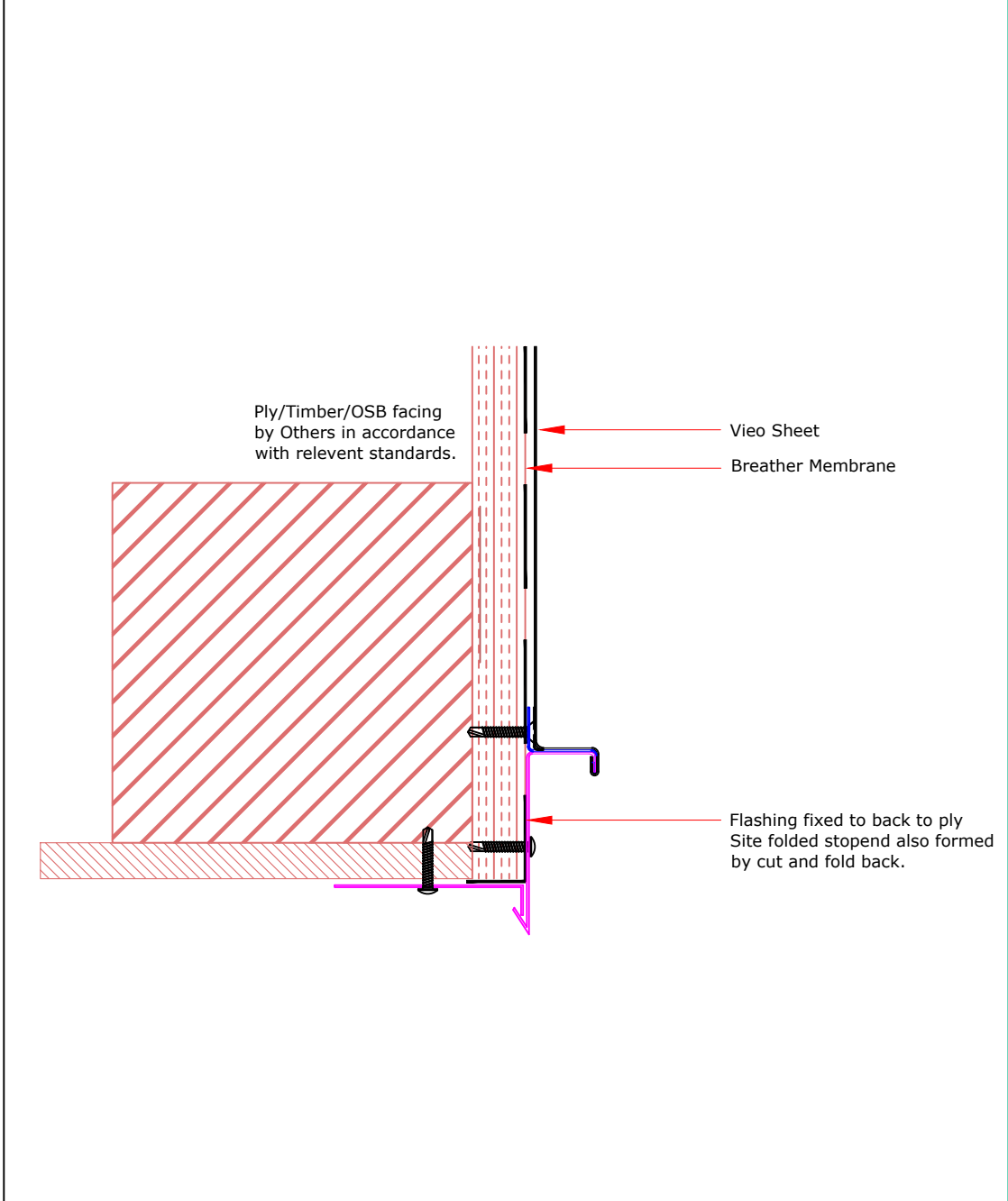
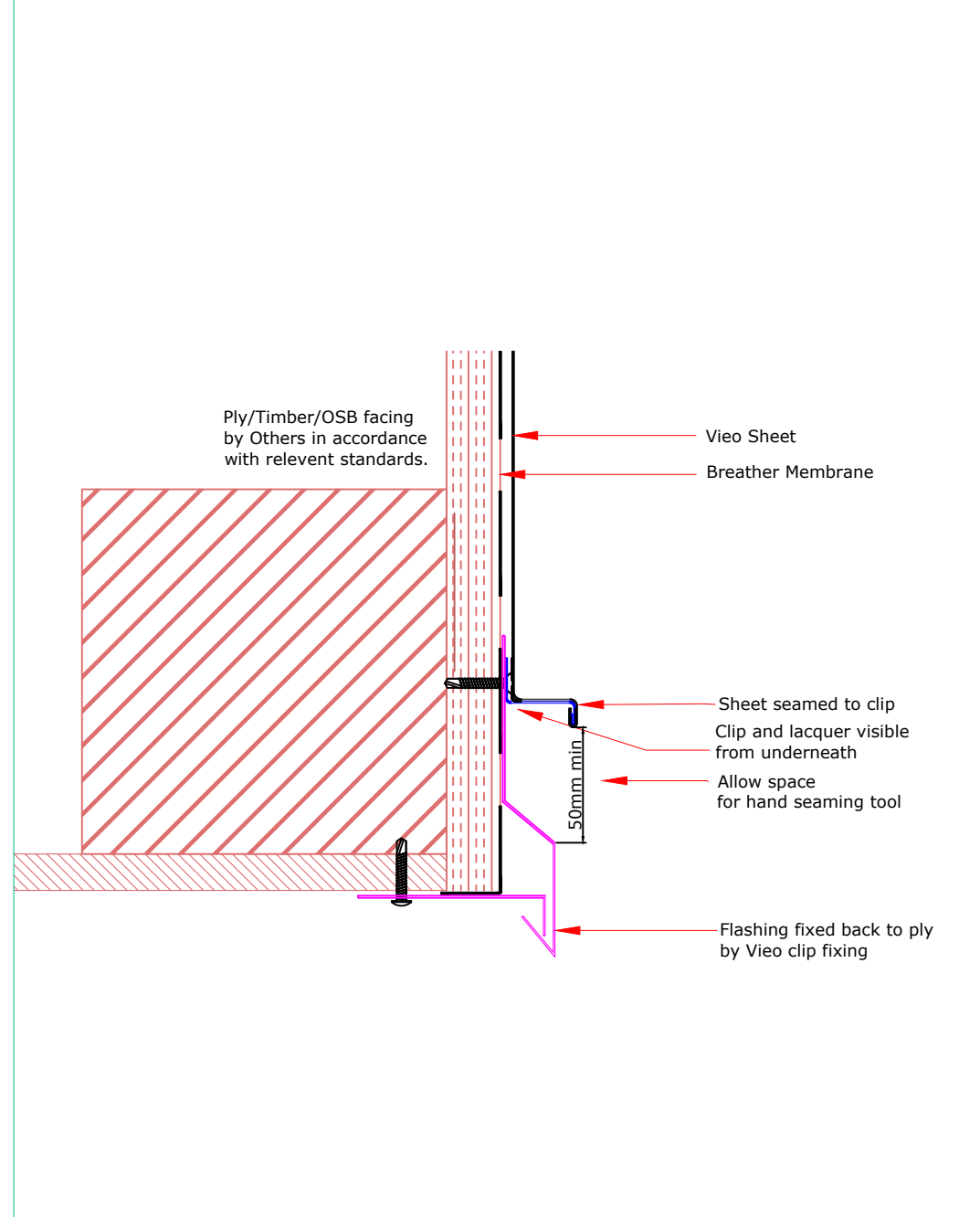
50mm min

Flashing fixed back to ply  
by Vieo clip fixing

Ply/Timber/OSB facing  
by Others in accordance  
with relevent standards.

Vieo Sheet  
Breather Membrane

Flashing fixed to back to ply  
Site folded stopend also formed  
by cut and fold back.





**TITLE: Vieo Horizontal Wall Covering (On Ply or OSB)**  
**DWG NO: V11\_HWC\_TD\_System**  
**SCALE: NTS**  
**ISSUE DATE: Sep 2018**

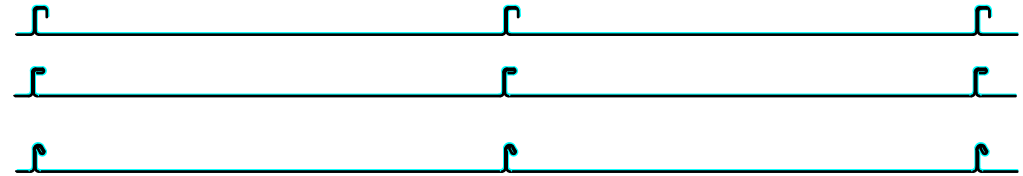
(To be read in conjunction with Vieo system specification documents)  
 Drawn by: PCI Checked by: MP

**Euro Clad Ltd,**  
**Wentloog Corporate Park,**  
**Wentloog Road, Cardiff CF3 2ER**  
**Tel: +44 (0)2922 010101**  
**Fax: +44 (0)2922 010122**  
**Website: [www.vieorooft.com](http://www.vieorooft.com)**

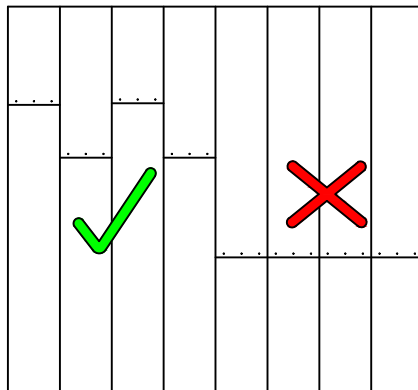
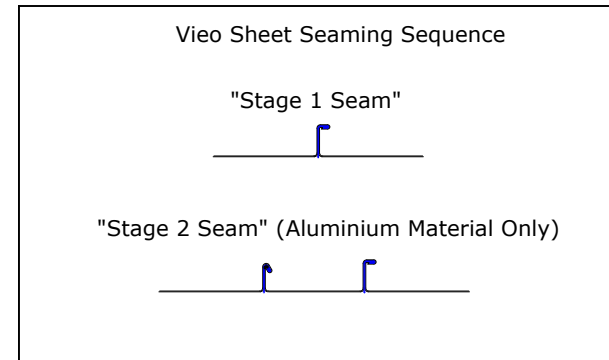
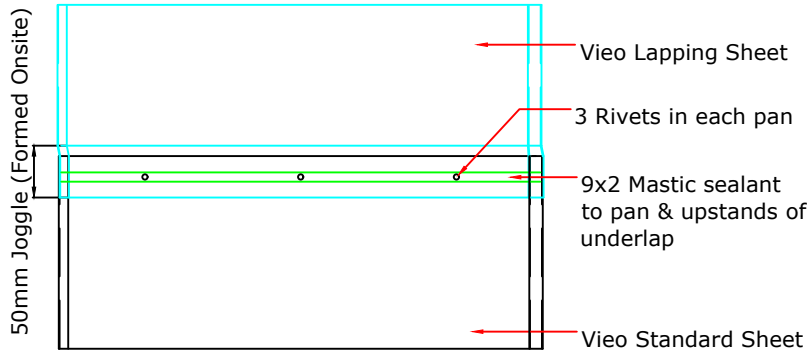
This draft drawing has been supplied by Euro Clad Ltd for the purpose of guidance free of charge. It is a suggested typical detail and as such should not be assumed suitable for any specific project or application. No responsibility is assumed for errors or misinterpretations resulting from the information contained in the drawing. Details are for illustration only and no liability is accepted. We reserve the right to change the details without notice. The drawing is copyright, it remains our property.

**RIVET ENDLAP DETAIL ONLY SUITABLE FOR PITCHES = / > 5°**

For advice on fixed point locations please contact Euroclad Technical

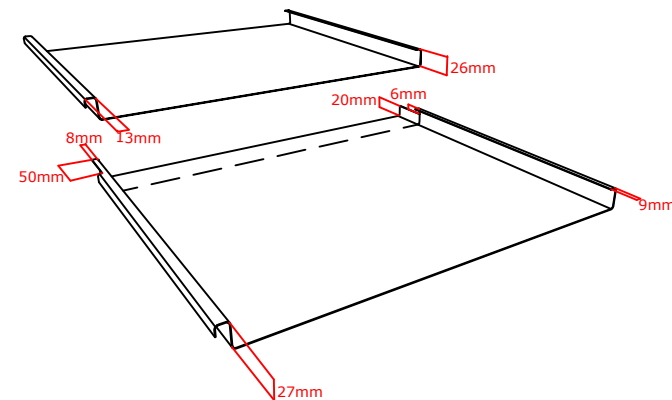


**SEAMING OPTIONS AT END LAP**



Lap joints must be staggered at least 100mm apart  
Clips minimum 100mm from joint

Vieo Sheets cut on site prior to jointing





**TITLE: Vieo Horizontal Wall Covering (On Ply or OSB)**

**DWG NO: V11\_HWC\_TD\_System**

**SCALE: NTS**

**ISSUE DATE: Sep 2018**

Drawn by: PCI Checked by: MP

(To be read in conjunction with Vieo system specification documents)

**Euro Clad Ltd,**  
**Wentloog Corporate Park,**  
**Wentloog Road, Cardiff CF3 2ER**  
**Tel: +44 (0)2922 010101**  
**Fax: +44 (0)2922 010122**  
**Website: [www.vieorooft.com](http://www.vieorooft.com)**

This draft drawing has been supplied by Euro Clad Ltd for the purpose of guidance free of charge. It is a suggested typical detail and as such should not be assumed suitable for any specific project or application. No responsibility is assumed for errors or misinterpretations resulting from the information contained in the drawing. Details are for illustration only and no liability is accepted. We reserve the right to change the details without notice. The drawing is copyright, it remains our property.

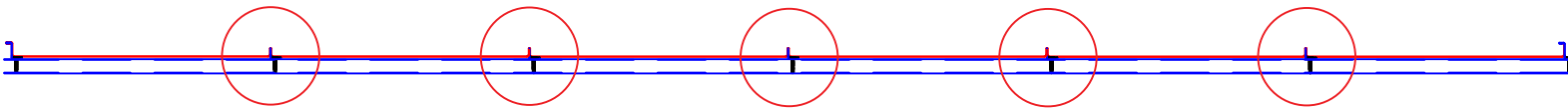
**STEP 1**

Damaged sheets in red



**STEP 2**

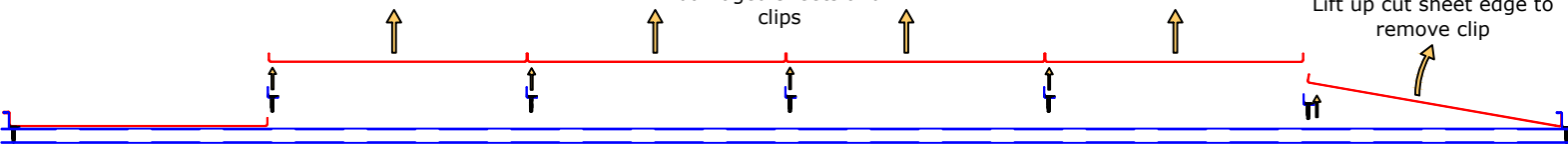
Cut off upstands of damaged sheets



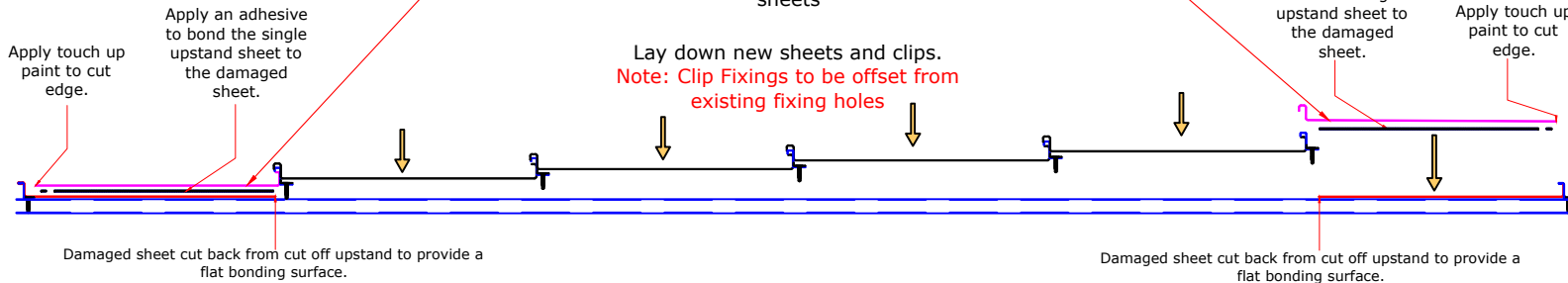
**STEP 3**

Remove the central damaged sheets and clips

Lift up cut sheet edge to remove clip

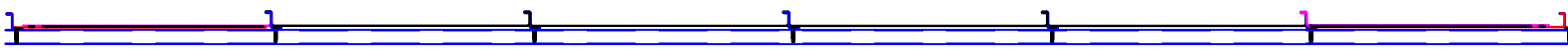


**STEP 4**



**STEP 5**

New sheets in place



Single upstand sheet should be manufactured narrower than what was originally ordered to allow for creep of new sheets.

Continuous run of adhesive set back by 10-15mm from sheet edge to be of consistent bead size.

Pressure should be applied to achieve a bond and seal along sheet length. Use sealed rivets if necessary.