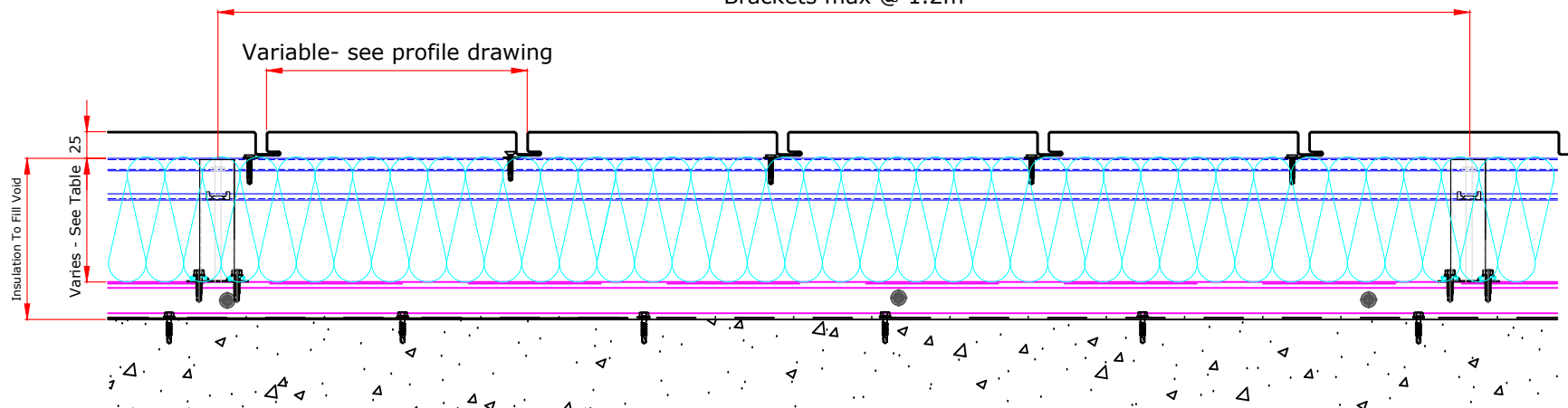


This draft drawing has been supplied by Euro Clad Ltd for the purpose of guidance free of charge. It is a suggested typical detail and as such should not be assumed suitable for any specific project or application. No responsibility is assumed for errors or misinterpretations resulting from the information contained in the drawing. Details are for illustration only and no liability is accepted. We reserve the right to change the details without notice. The drawing is copyright, it remains our property.

To be read in conjunction with Refresh guidance and specification documents

Brackets max @ 1.2m



Refresh Wall Brick/Block Existing with Vertical Opus Plank Outer Profile			
Quattro Bracket Height	Insulation Thickness *	Insulation Value	Minimum U Value with Rails at 1.8M & Brackets at 1.2M Centres
120mm	160mm	0.040	0.35
140mm	180mm	0.040	0.30
160mm	200mm	0.040	0.27
180mm	220mm	0.040	0.24
200mm	240mm	0.040	0.21
220mm	260mm	0.040	0.20

* Insulation thickness is increased to allow for cleats/ tophats, typically based on Quattro bracket depth + 40mm.
No allowance made for performance of block/brick wall in U value stated.

TITLE: Refresh Wall Brick/Block Existing with Vertical Opus Plank outer Profile

DWG NO:

DRAWN: EP

CHECK: PCL

DATE: May 2017

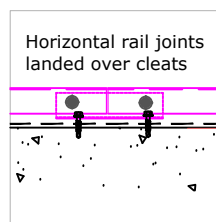
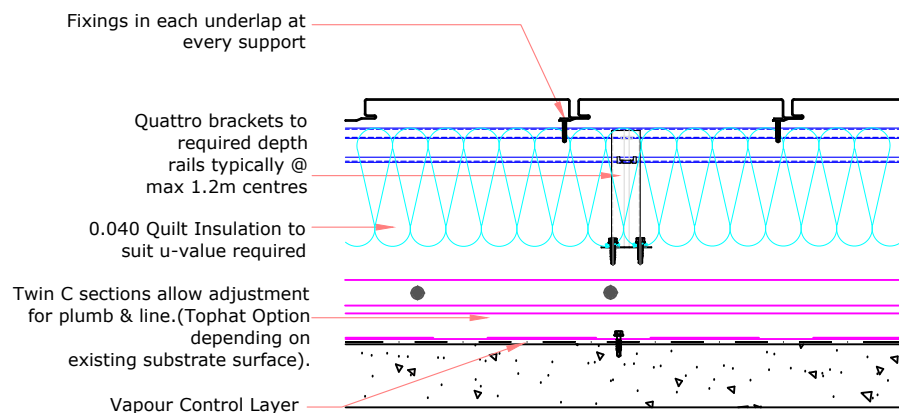
SCALE: NTS

This draft drawing has been supplied by Euro Clad Ltd for the purpose of guidance free of charge. It is a suggested typical detail and as such should not be assumed suitable for any specific project or application. No responsibility is assumed for errors or misinterpretations resulting from the information contained in the drawing. Details are for illustration only and no liability is accepted. We reserve the right to change the details without notice. The drawing is copyright, it remains our property.

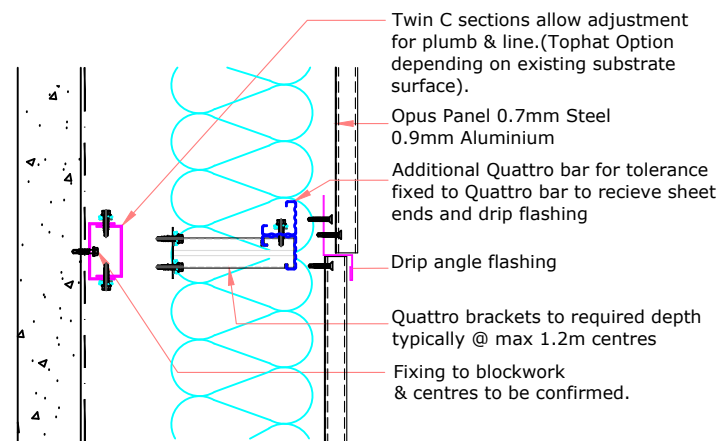
To be read in conjunction with Refresh guidance and specification documents

Please Note:
WT75 Self Adhesive Barrier Tape must be used on Quattro rails when aluminium Opus is being used.

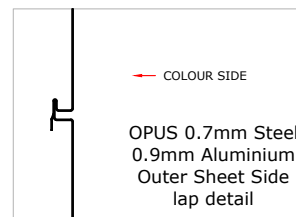
REFRESH WALL WITH VERTICAL OPUS PROFILE VERTICAL JOINT DETAIL



REFRESH WALL WITH VERTICAL OPUS PROFILE HORIZONTAL JOINT DETAIL



NB: Drip flashing to 2nd Quattro bar @ 450mm centres
Fixing to avoid panel side lap positions



EUROCLAD OPUS EXTERNAL SHEET

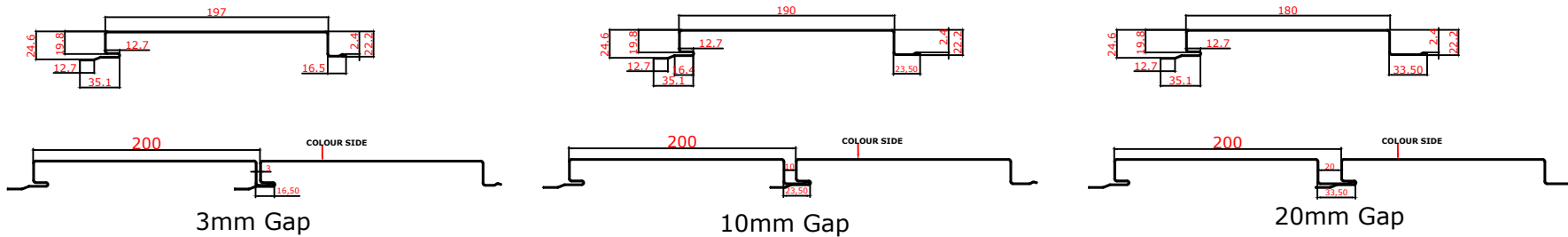
NB: Module = Face + Gap size
Gap size should be kept uniform with the use of packers

TITLE: Refresh Wall Brick/Block Existing with Vertical Opus Plank outer Profile
 DWG NO:
 DRAWN: EP
 CHECK: PCL
 DATE: May 2017
 SCALE: NTS

This draft drawing has been supplied by Euro Clad Ltd for the purpose of guidance free of charge. It is a suggested typical detail and as such should not be assumed suitable for any specific project or application. No responsibility is assumed for errors or misinterpretations resulting from the information contained in the drawing. Details are for illustration only and no liability is accepted. We reserve the right to change the details without notice. The drawing is copyright, it remains our property.

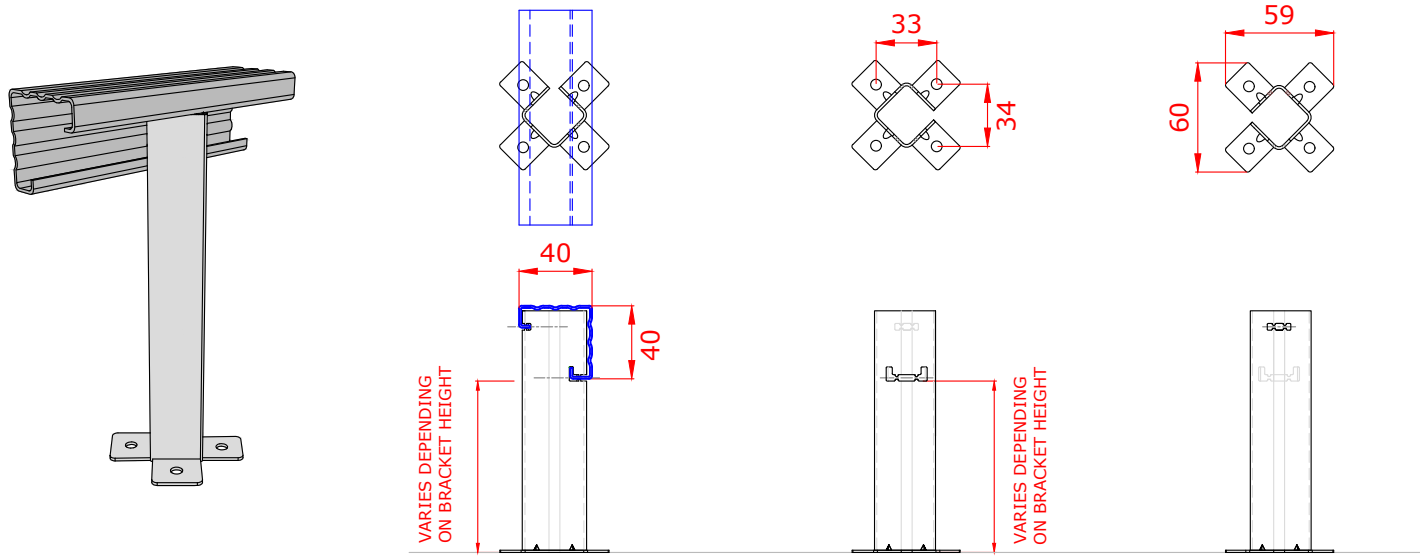
To be read in conjunction with Refresh guidance and specification documents

Plank 200mm Module

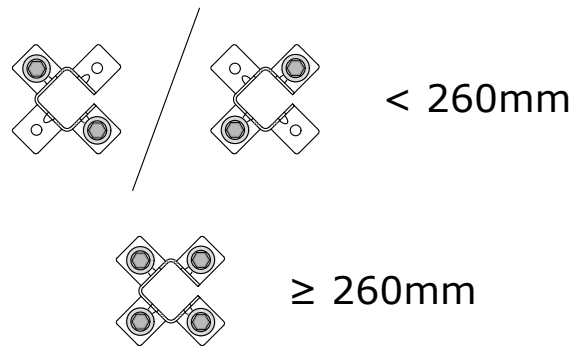


This draft drawing has been supplied by Euro Clad Ltd for the purpose of guidance free of charge. It is a suggested typical detail and as such should not be assumed suitable for any specific project or application. No responsibility is assumed for errors or misinterpretations resulting from the information contained in the drawing. Details are for illustration only and no liability is accepted. We reserve the right to change the details without notice. The drawing is copyright, it remains our property.

To be read in conjunction with Refresh guidance and specification documents



Brackets less than 260mm require 2 fixings diagonally opposite.
 Brackets 260mm or more require 4 fixings.



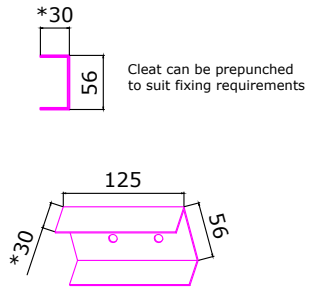
TITLE: Refresh Wall Brick/Block Existing with Vertical Opus Plank outer Profile
 DWG NO:
 DRAWN: EP
 CHECK: PCL
 DATE: May 2017
 SCALE: NTS

This draft drawing has been supplied by Euro Clad Ltd for the purpose of guidance free of charge. It is a suggested typical detail and as such should not be assumed suitable for any specific project or application. No responsibility is assumed for errors or misinterpretations resulting from the information contained in the drawing. Details are for illustration only and no liability is accepted. We reserve the right to change the details without notice. The drawing is copyright, it remains our property.

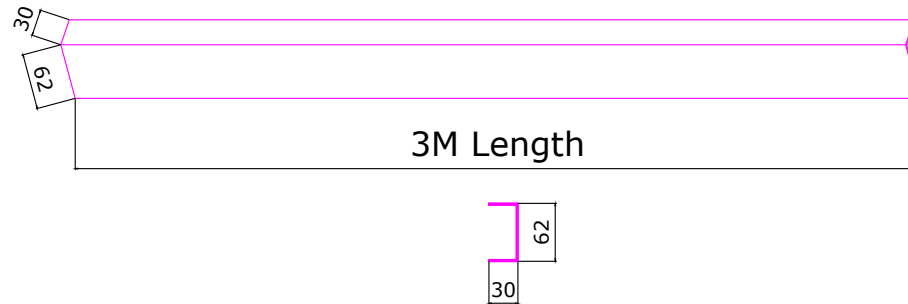
To be read in conjunction with Refresh guidance and specification documents

Galv 'C' Rails and cleats are preferable when wall surface is uneven and allows for adjustment.

***Cleat depth can be adjusted according to site requirements**

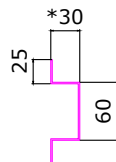


Material: 1.5mm Galv



Tophats can be considered if wall surface is even with little variation.

***Tophat depth can be adjusted according to site requirements**



Material: 1.5mm Galv

