

ELITE SYSTEMS

**EUROCLAD**

www.euroclad.com  
Tel: +44 (0)2922 010 101  
Fax: +44 (0)2922 010 122

TITLE: Elite System 4

DWG NO: E4

DRAWN: MP

CHECK: PCL

DATE: August 15

SCALE: NTS

This draft drawing has been supplied by Euro Clad Ltd for the purpose of guidance free of charge. It is a suggested typical detail and as such should not be assumed suitable for any specific project or application. No responsibility is assumed for errors or misinterpretations resulting from the information contained in the drawing. Details are for illustration only and no liability is accepted. We reserve the right to change the details without notice. The drawing is copyright, it remains our property.

See drawing numbers FR3 and FR16 for non-fragile fixing requirements

To be read in conjunction with Elite System specification documents

### Elite System 4

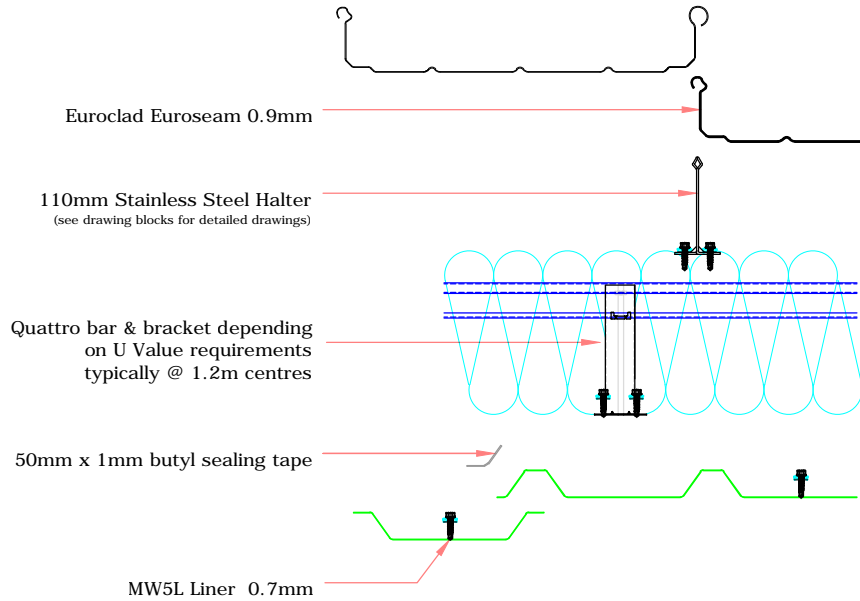
Bracket Height	Halter Size	Cavity Depth	Insulation Thickness	Insulation Value	Overall System Depth	U Value at 1.5M Centres	Nominal Weight/M <sup>2</sup>	
							Kn 40	RW
100mm	110mm	139mm	160mm	0.040 λ	215mm	0.35	13.49 kg/m <sup>2</sup>	15.89 kg/m <sup>2</sup>
150mm	110mm	189mm	200mm	0.040 λ	265mm	0.24	14.02 kg/m <sup>2</sup>	17.02 kg/m <sup>2</sup>
160mm	110mm	199mm	220mm	0.040 λ	275mm	0.23	14.27 kg/m <sup>2</sup>	17.57 kg/m <sup>2</sup>
180mm	110mm	219mm	240mm	0.040 λ	295mm	0.21	14.53 kg/m <sup>2</sup>	18.13 kg/m <sup>2</sup>
185mm	110mm	224mm	240mm	0.040 λ	300mm	0.20	14.53 kg/m <sup>2</sup>	18.13 kg/m <sup>2</sup>
200mm	110mm	239mm	260mm**	0.040 λ	315mm	0.19	14.79 kg/m <sup>2</sup>	18.69 kg/m <sup>2</sup>
220mm	110mm	259mm	280mm	0.040 λ	335mm	0.18	15.05 kg/m <sup>2</sup>	19.25 kg/m <sup>2</sup>
240mm	110mm	279mm	300mm	0.040 λ	355mm	0.16	15.31 kg/m <sup>2</sup>	19.81 kg/m <sup>2</sup>
260mm	110mm	299mm	320mm	0.040 λ	375mm	0.15	15.57 kg/m <sup>2</sup>	20.37 kg/m <sup>2</sup>
280mm	110mm	319mm	340mm	0.040 λ	395mm	0.14	15.83 kg/m <sup>2</sup>	20.93 kg/m <sup>2</sup>
300mm	110mm	339mm	360mm	0.040 λ	415mm	0.13	16.09 kg/m <sup>2</sup>	21.49 kg/m <sup>2</sup>

\*Some adjustment of the halter setout for sheets may be required

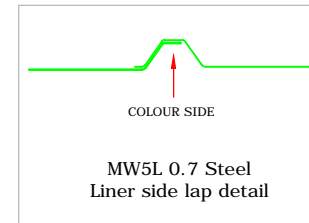
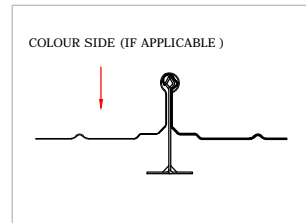
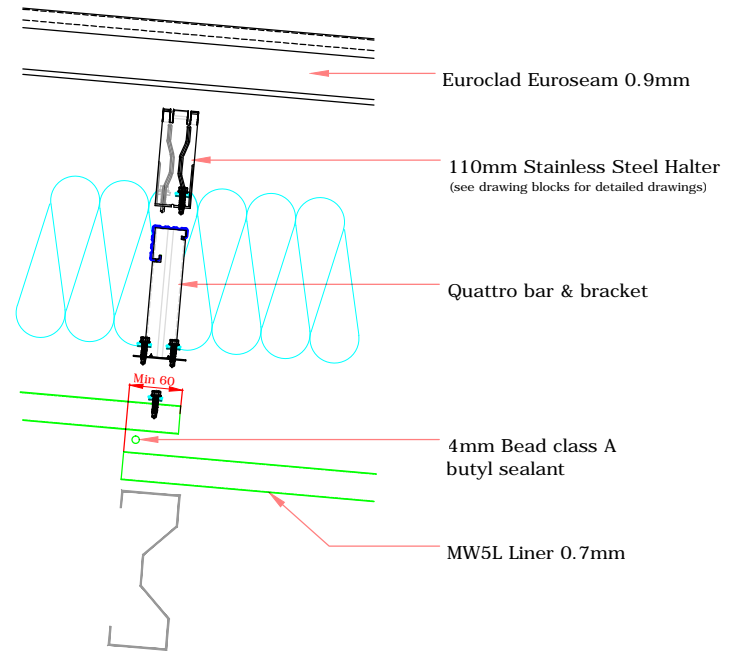
\*\* Rockwool not available in standard thickness, weights calculated to next available thickness  
Other U Values available please consult Euroclad

Suitable for pitches down to 1°

ELITE SYSTEM 4 SIDE LAP DETAIL



ELITE SYSTEM 4 END DETAIL



ELITE SYSTEMS

**EUROCLAD**

www.euroclad.com  
Tel: +44 (0)2922 010 101  
Fax: +44 (0)2922 010 122

TITLE: Elite System 4

DWG NO: E4

DRAWN: MP

CHECK: PCL

DATE: August 15

SCALE: NTS

This draft drawing has been supplied by Euro Clad Ltd for the purpose of guidance free of charge. It is a suggested typical detail and as such should not be assumed suitable for any specific project or application. No responsibility is assumed for errors or misinterpretations resulting from the information contained in the drawing. Details are for illustration only and no liability is accepted. We reserve the right to change the details without notice. The drawing is copyright, it remains our property.

See drawing numbers FR3 and FR16 for non-fragile fixing requirements

To be read in conjunction with Elite System specification documents

ELITE SYSTEMS



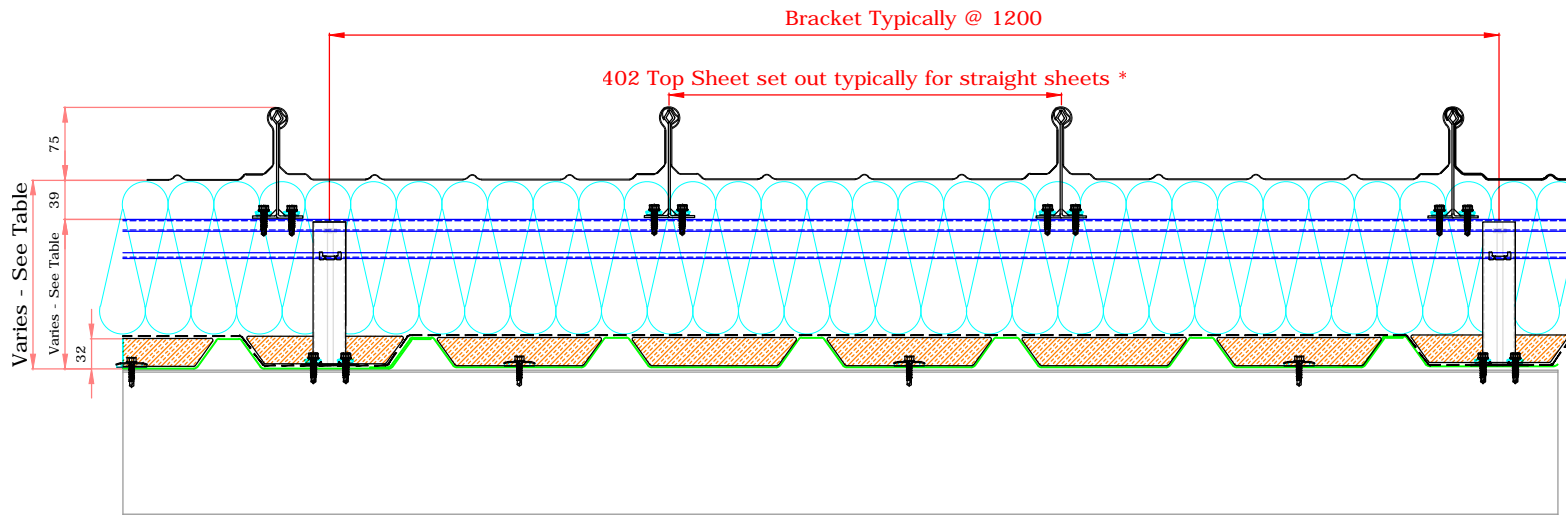
www.euroclad.com  
Tel: +44 (0)2922 010 101  
Fax: +44 (0)2922 010 122

TITLE: Elite System 4  
DWG NO: E4  
DRAWN: MP  
CHECK: PCL  
DATE: August 15  
SCALE: NTS

This draft drawing has been supplied by Euro Clad Ltd for the purpose of guidance free of charge. It is a suggested typical detail and as such should not be assumed suitable for any specific project or application. No responsibility is assumed for errors or misinterpretations resulting from the information contained in the drawing. Details are for illustration only and no liability is accepted. We reserve the right to change the details without notice. The drawing is copyright, it remains our property.

See drawing numbers FR3 and FR16 for non-fragile fixing requirements

To be read in conjunction with Elite System specification documents



### Elite System 4 A2

Bracket Height	Halter Size	Cavity Depth	Acoustic Insulation	Insulation Thickness	Insulation Value	Overall System Depth	U Value at 1.5M Centres	Nominal Weight/M <sup>2</sup>	
								Kn 40	RW
150mm	110mm	157mm	30mm	180mm	0.040 λ	265mm	0.24	14.75 kg/m <sup>2</sup>	17.45 kg/m <sup>2</sup>
160mm	110mm	167mm	30mm	180mm	0.040 λ	275mm	0.23	14.76 kg/m <sup>2</sup>	17.46 kg/m <sup>2</sup>
180mm	110mm	187mm	30mm	200mm	0.040 λ	295mm	0.21	15.02 kg/m <sup>2</sup>	18.02 kg/m <sup>2</sup>
185mm	110mm	192mm	30mm	220mm	0.040 λ	300mm	0.20	15.27 kg/m <sup>2</sup>	18.57 kg/m <sup>2</sup>
200mm	110mm	207mm	30mm	240mm	0.040 λ	315mm	0.19	15.52 kg/m <sup>2</sup>	19.12 kg/m <sup>2</sup>
220mm	110mm	227mm	30mm	240mm	0.040 λ	335mm	0.18	15.54 kg/m <sup>2</sup>	19.14 kg/m <sup>2</sup>
240mm	110mm	247mm	30mm	280mm	0.040 λ	355mm	0.16	16.04 kg/m <sup>2</sup>	20.24 kg/m <sup>2</sup>
260mm	110mm	267mm	30mm	300mm	0.040 λ	375mm	0.15	16.30 kg/m <sup>2</sup>	20.80 kg/m <sup>2</sup>
280mm	110mm	287mm	30mm	320mm	0.040 λ	395mm	0.14	16.56 kg/m <sup>2</sup>	21.36 kg/m <sup>2</sup>
300mm	110mm	307mm	30mm	340mm	0.040 λ	415mm	0.13	16.82 kg/m <sup>2</sup>	21.92 kg/m <sup>2</sup>

\*Some adjustment of the halter set out for sheets may be required

Suitable for pitches down to 1°



www.euroclad.com  
 Tel: +44 (0)2922 010 101  
 Fax: +44 (0)2922 010 122

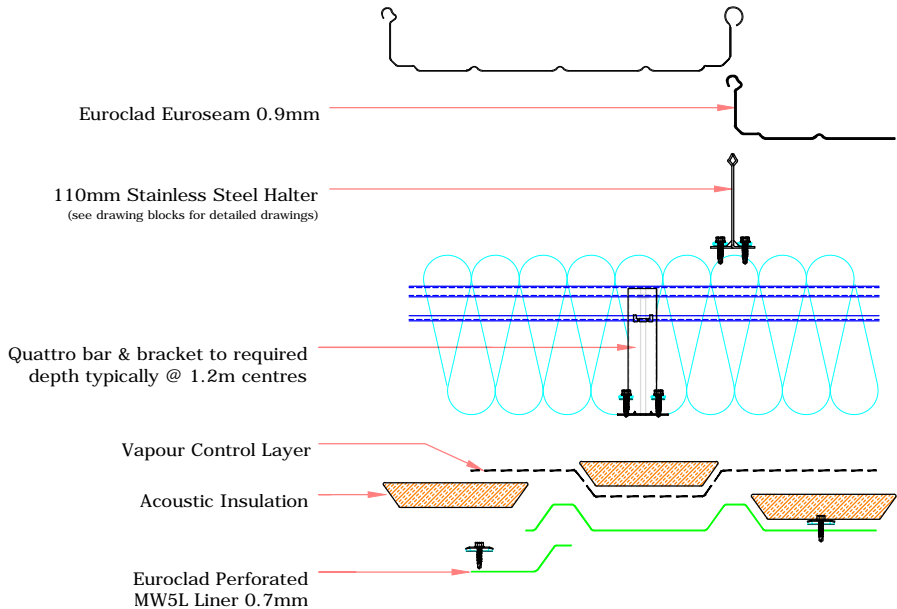
TITLE: Elite System 4  
 DWG NO: E4  
 DRAWN: MP  
 CHECK: PCL  
 DATE: August 15  
 SCALE: NTS

This draft drawing has been supplied by Euro Clad Ltd for the purpose of guidance free of charge. It is a suggested typical detail and as such should not be assumed suitable for any specific project or application. No responsibility is assumed for errors or misinterpretations resulting from the information contained in the drawing. Details are for illustration only and no liability is accepted. We reserve the right to change the details without notice. The drawing is copyright, it remains our property.

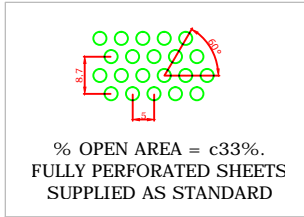
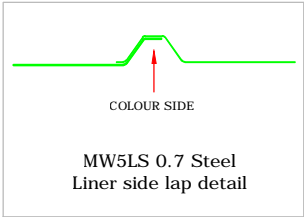
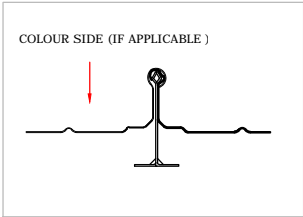
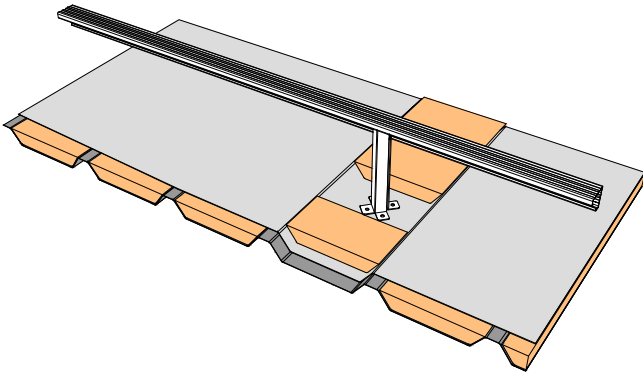
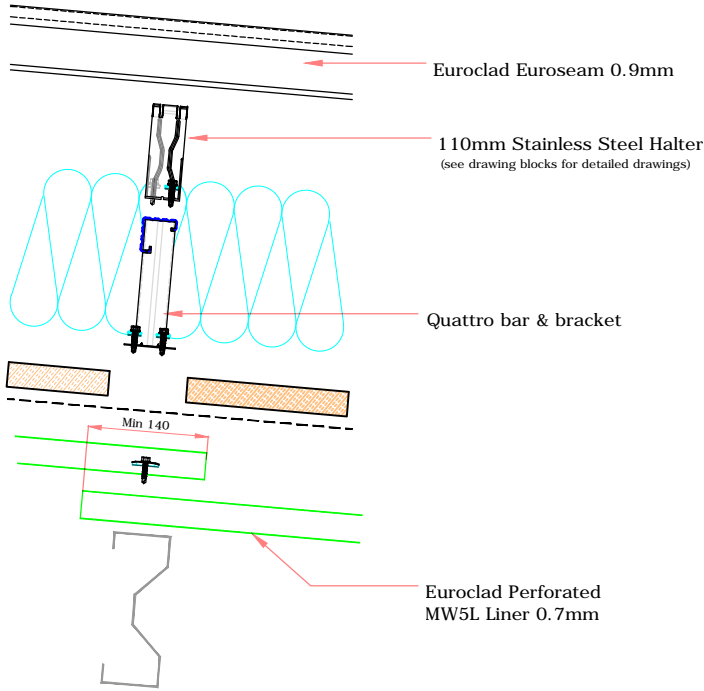
See drawing numbers FR3 and FR16 for non-fragile fixing requirements

To be read in conjunction with Elite System specification documents

ELITE SYSTEM 4 A2 SIDE LAP DETAIL



ELITE SYSTEM 4 A2 END DETAIL



Continuity of vapour control and air tightness may be achieved by sealing VCL to other building elements and perimeter details. This may be facilitated by sealing VCL, profile fillers and flashings, extending VCL where appropriate and sealing to suitable details. The use of un-perforated liner at perimeters may also be considered.

ELITE SYSTEMS

**EUROCLAD**

www.euroclad.com  
Tel: +44 (0)2922 010 101  
Fax: +44 (0)2922 010 122

TITLE: Elite System 4

DWG NO: E4

DRAWN: MP

CHECK: PCL

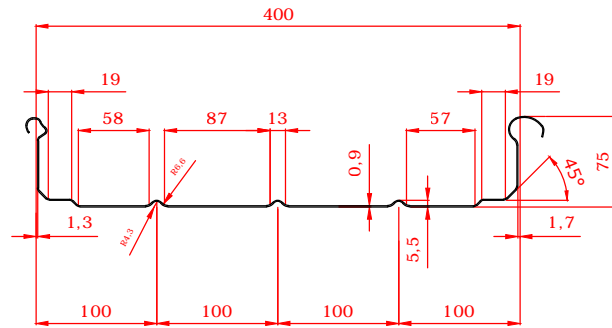
DATE: August 15

SCALE: NTS

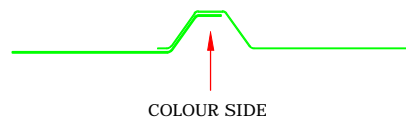
This draft drawing has been supplied by Euro Clad Ltd for the purpose of guidance free of charge. It is a suggested typical detail and as such should not be assumed suitable for any specific project or application. No responsibility is assumed for errors or misinterpretations resulting from the information contained in the drawing. Details are for illustration only and no liability is accepted. We reserve the right to change the details without notice. The drawing is copyright, it remains our property.

See drawing numbers FR3 and FR16 for non-fragile fixing requirements

To be read in conjunction with Elite System specification documents

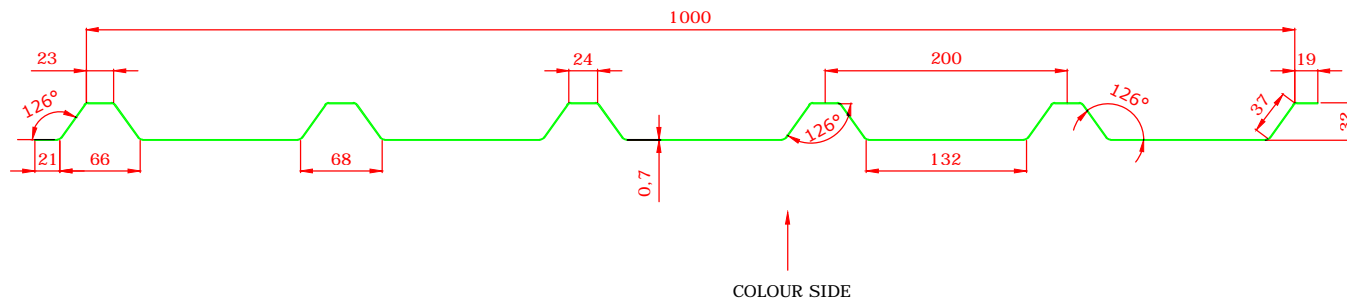


EUROCLAD EUROSEAM 0.9mm  
EXTERNAL SHEET



COLOUR SIDE

EUROCLAD MW5L 0.7mm LINER

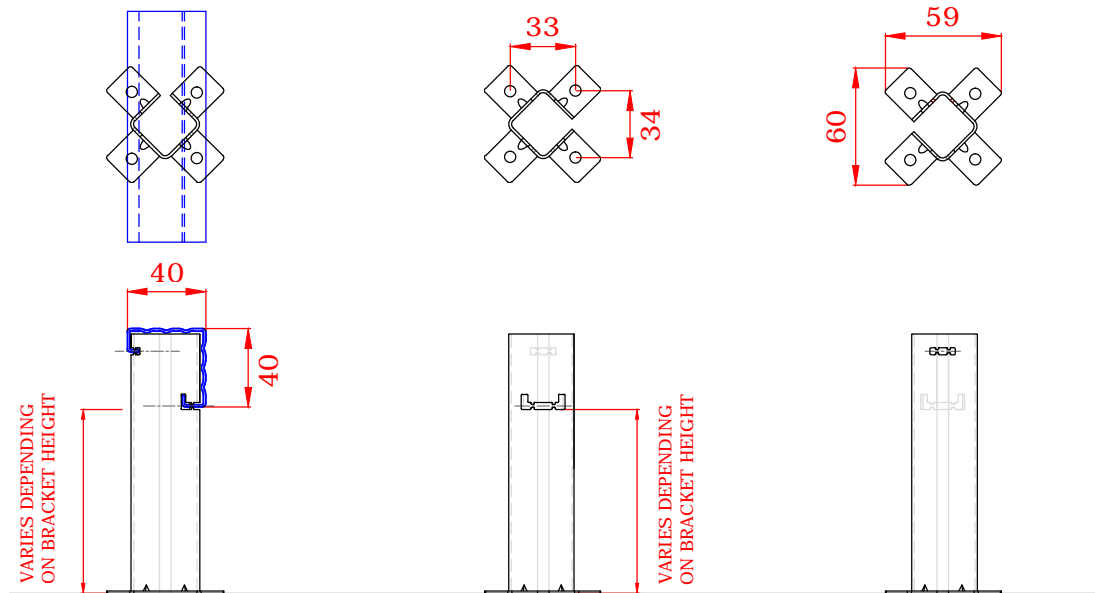
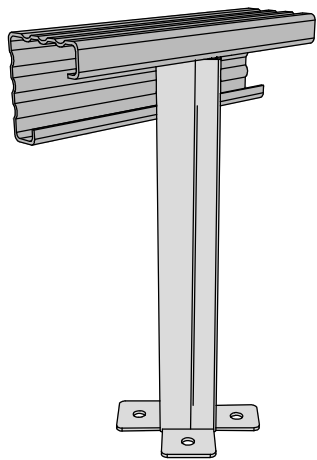


COLOUR SIDE

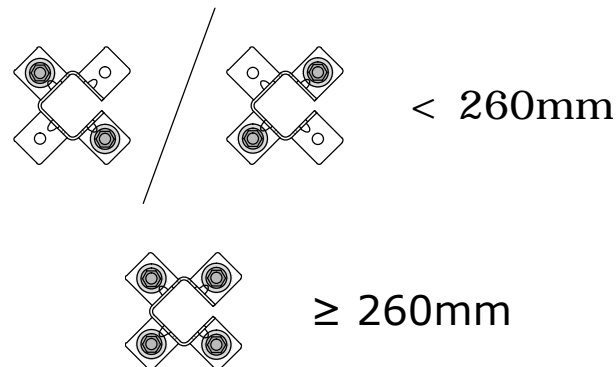
This draft drawing has been supplied by Euro Clad Ltd for the purpose of guidance free of charge. It is a suggested typical detail and as such should not be assumed suitable for any specific project or application. No responsibility is assumed for errors or misinterpretations resulting from the information contained in the drawing. Details are for illustration only and no liability is accepted. We reserve the right to change the details without notice. The drawing is copyright, it remains our property.

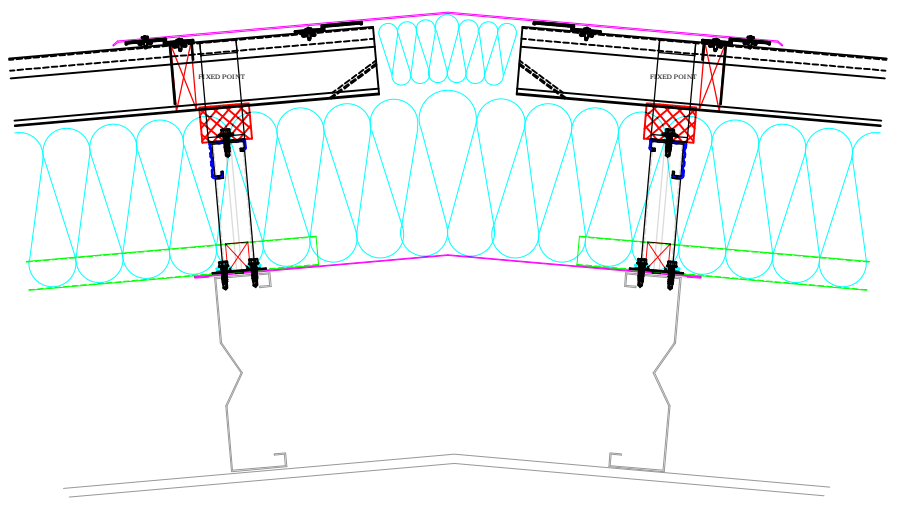
See drawing numbers FR3 and FR16 for non-fragile fixing requirements

To be read in conjunction with Elite System specification documents



Brackets less than 260mm require 2 fixings diagonally opposite.  
 Brackets 260mm or more require 4 fixings.





ELITE SYSTEMS



www.euroclad.com  
 Tel: +44 (0)2922 010 101  
 Fax: +44 (0)2922 010 122

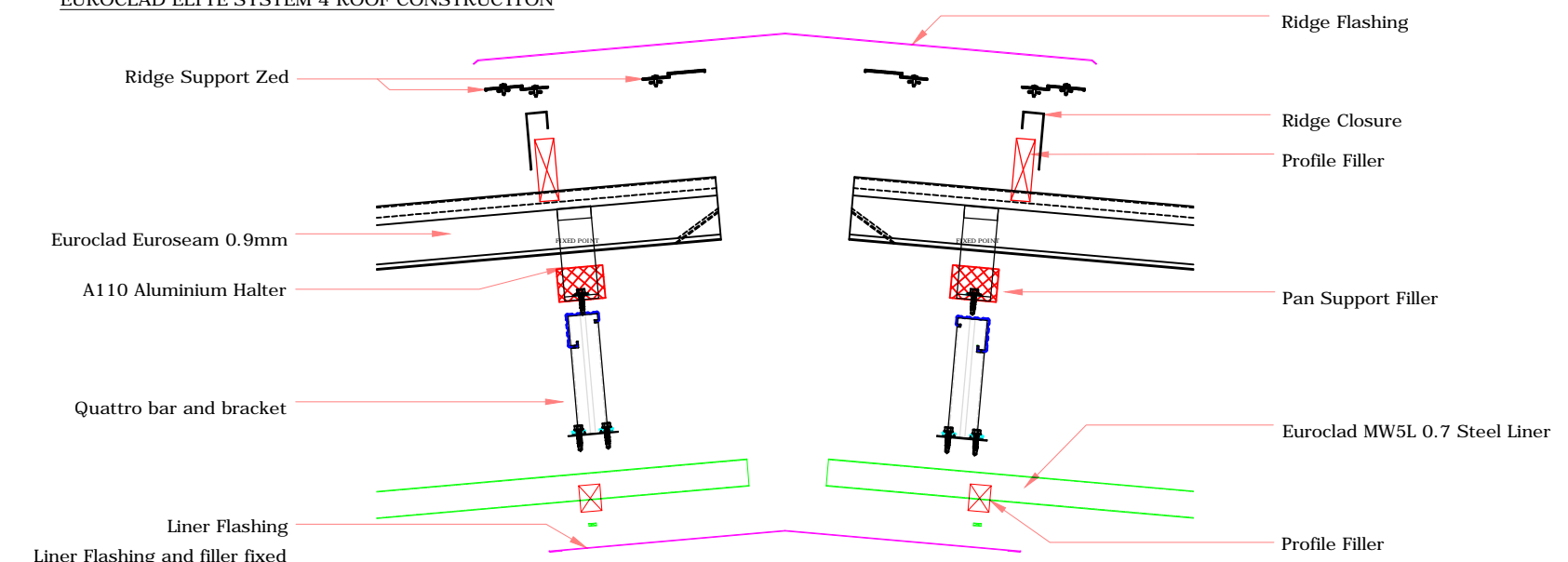
TITLE: Elite System 4  
 DWG NO: E4  
 DRAWN: MP  
 CHECK: PCL  
 DATE: August 15  
 SCALE: NTS

This draft drawing has been supplied by Euro Clad Ltd for the purpose of guidance free of charge. It is a suggested typical detail and as such should not be assumed suitable for any specific project or application. No responsibility is assumed for errors or misinterpretations resulting from the information contained in the drawing. Details are for illustration only and no liability is accepted. We reserve the right to change the details without notice. The drawing is copyright, it remains our property.

See drawing numbers FR3 and FR16 for non-fragile fixing requirements

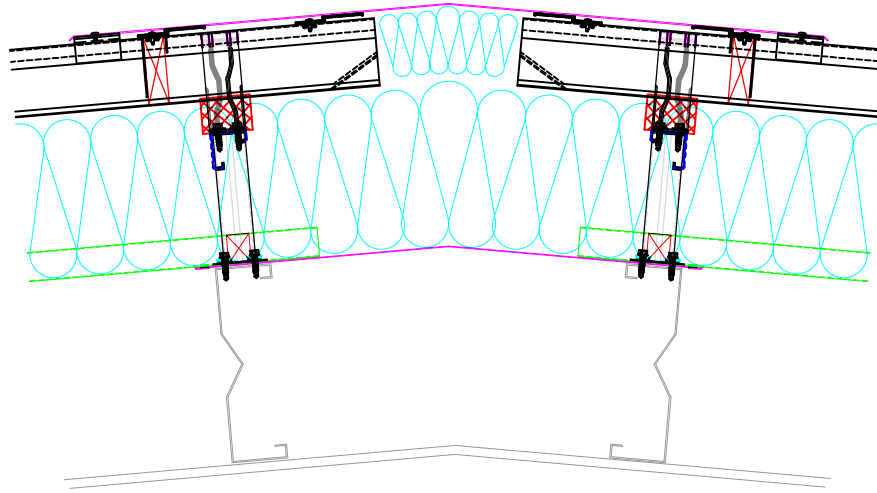
To be read in conjunction with Elite System specification documents

EUROCLAD ELITE SYSTEM 4 ROOF CONSTRUCTION



Liner Flashing and filler fixed and sealed to liner to provide air tightness and vapour control

Insulation excluded for clarity  
 A range of mineral & glass wool insulations are available for different requirements



ELITE SYSTEMS



www.euroclad.com  
 Tel: +44 (0)2922 010 101  
 Fax: +44 (0)2922 010 122

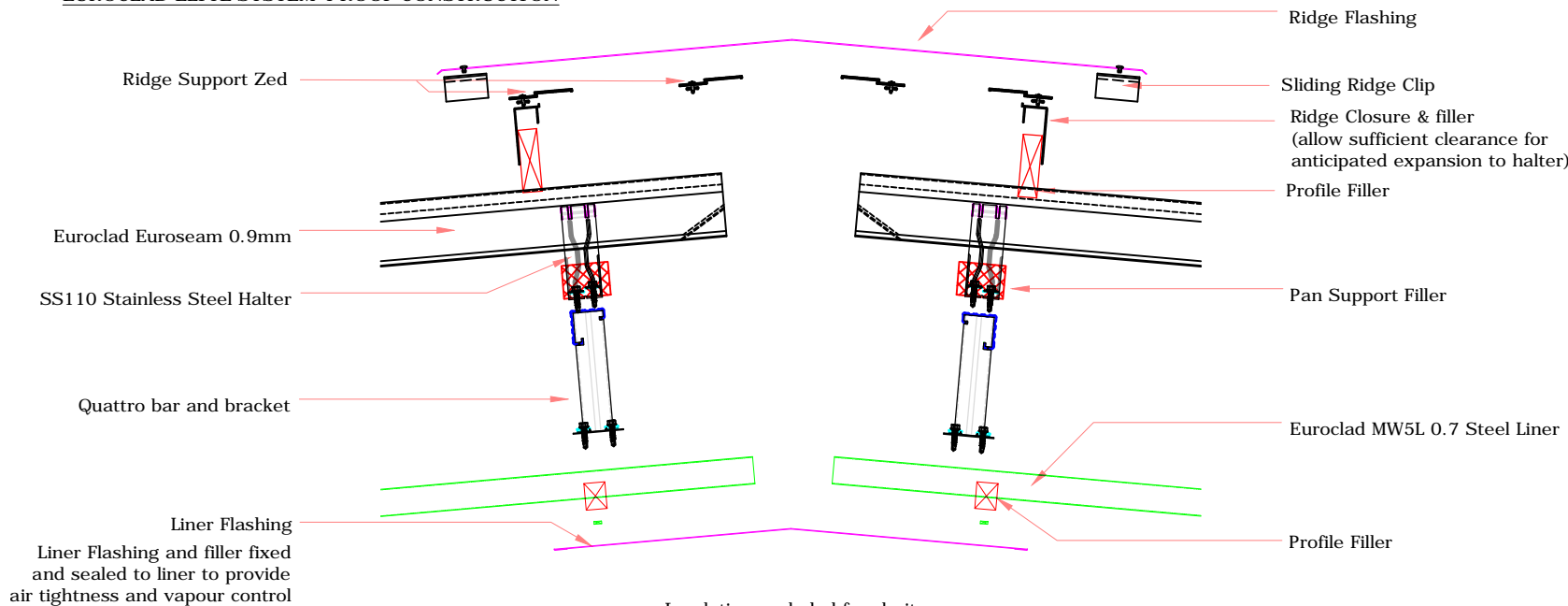
TITLE: Elite System 4  
 DWG NO: E4  
 DRAWN: MP  
 CHECK: PCL  
 DATE: August 15  
 SCALE: NTS

This draft drawing has been supplied by Euro Clad Ltd for the purpose of guidance free of charge. It is a suggested typical detail and as such should not be assumed suitable for any specific project or application. No responsibility is assumed for errors or misinterpretations resulting from the information contained in the drawing. Details are for illustration only and no liability is accepted. We reserve the right to change the details without notice. The drawing is copyright, it remains our property.

See drawing numbers FR3 and FR16 for non-fragile fixing requirements

To be read in conjunction with Elite System specification documents

EUROCLAD ELITE SYSTEM 4 ROOF CONSTRUCTION

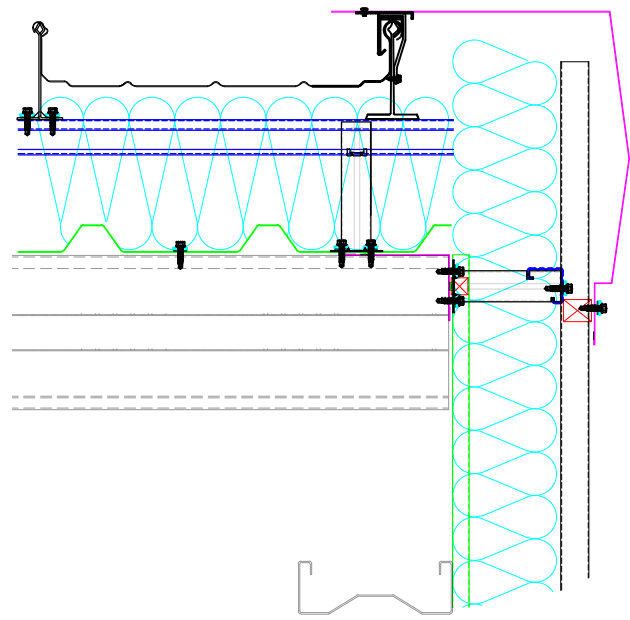


Insulation excluded for clarity

A range of mineral & glass wool insulations are available for different requirements

Liner Flashing  
 Liner Flashing and filler fixed and sealed to liner to provide air tightness and vapour control





ELITE SYSTEMS



www.euroclad.com  
 Tel: +44 (0)2922 010 101  
 Fax: +44 (0)2922 010 122

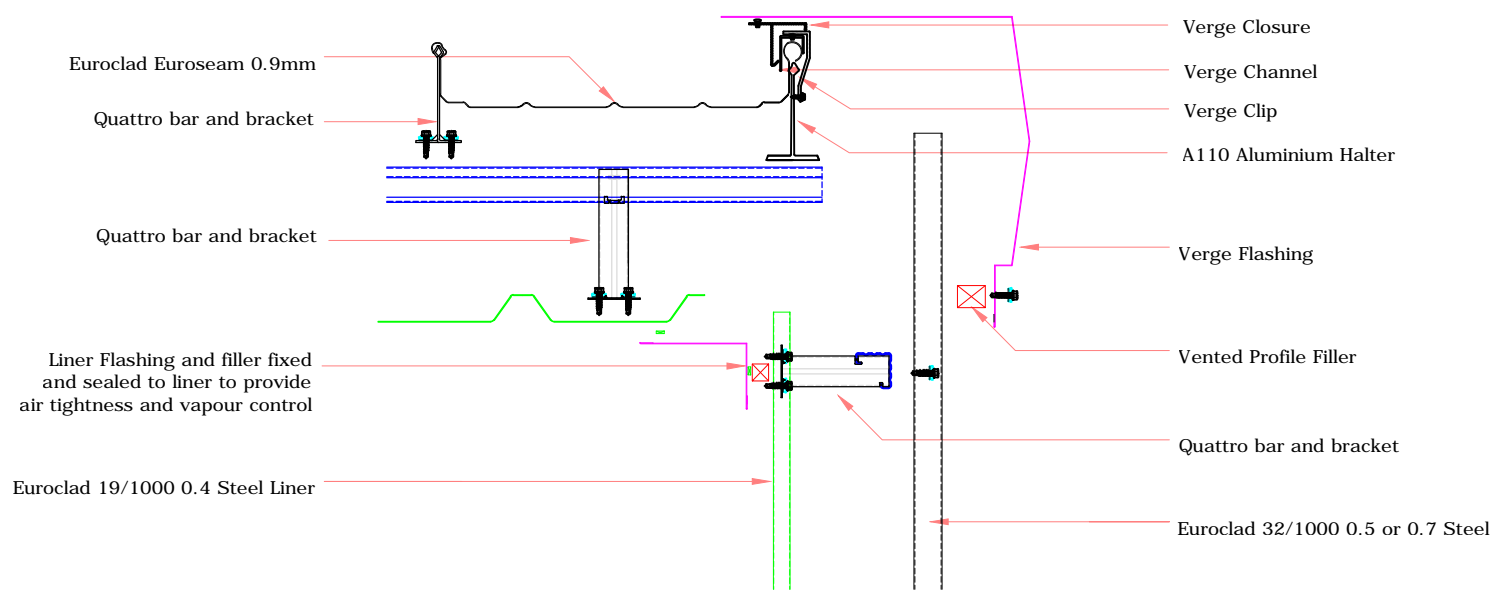
TITLE: Elite System 4  
 DWG NO: E4  
 DRAWN: MP  
 CHECK: PCL  
 DATE: August 15  
 SCALE: NTS

This draft drawing has been supplied by Euro Clad Ltd for the purpose of guidance free of charge. It is a suggested typical detail and as such should not be assumed suitable for any specific project or application. No responsibility is assumed for errors or misinterpretations resulting from the information contained in the drawing. Details are for illustration only and no liability is accepted. We reserve the right to change the details without notice. The drawing is copyright, it remains our property.

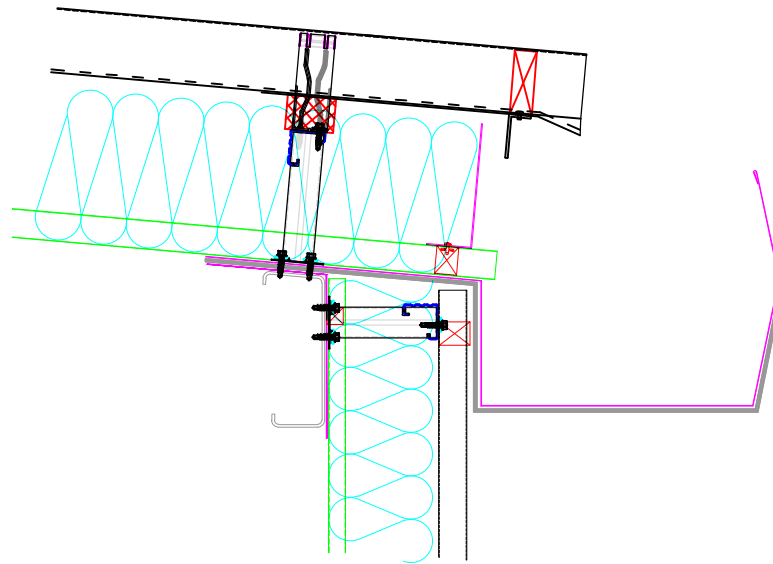
See drawing numbers FR3 and FR16 for non-fragile fixing requirements

To be read in conjunction with Elite System specification documents

EUROCLAD ELITE SYSTEM 4 ROOF CONSTRUCTION



Insulation excluded for clarity  
 A range of mineral & glass wool insulations are available for different requirements



ELITE SYSTEMS

**EUROCLAD**

www.euroclad.com  
 Tel: +44 (0)2922 010 101  
 Fax: +44 (0)2922 010 122

TITLE: Elite System 4

DWG NO: E4

DRAWN: MP

CHECK: PCL

DATE: August 15

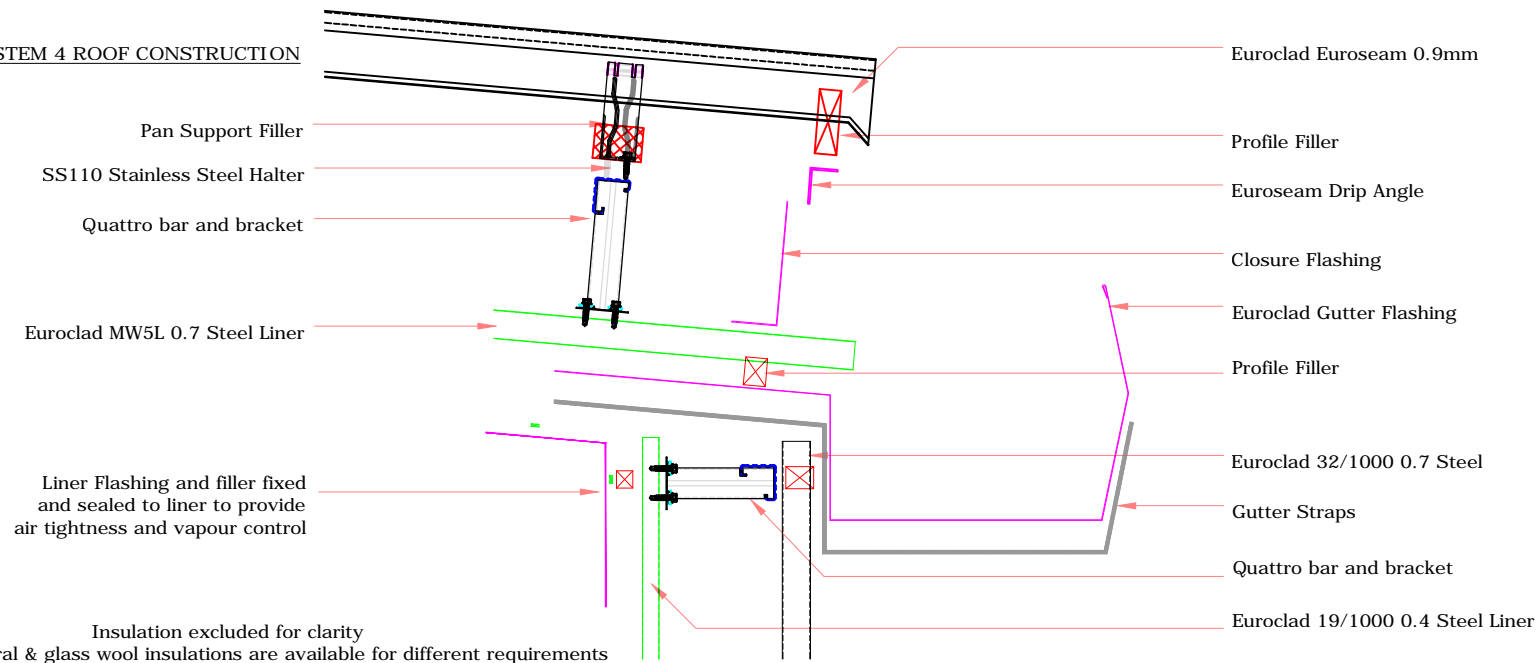
SCALE: NTS

This draft drawing has been supplied by Euro Clad Ltd for the purpose of guidance free of charge. It is a suggested typical detail and as such should not be assumed suitable for any specific project or application. No responsibility is assumed for errors or misinterpretations resulting from the information contained in the drawing. Details are for illustration only and no liability is accepted. We reserve the right to change the details without notice. The drawing is copyright, it remains our property.

See drawing numbers FR3 and FR16 for non-fragile fixing requirements

To be read in conjunction with Elite System specification documents

**EUROCLAD ELITE SYSTEM 4 ROOF CONSTRUCTION**



Pan Support Filler

SS110 Stainless Steel Halter

Quattro bar and bracket

Euroclad MW5L 0.7 Steel Liner

Liner Flashing and filler fixed and sealed to liner to provide air tightness and vapour control

Euroclad Euroseam 0.9mm

Profile Filler

Euroseam Drip Angle

Closure Flashing

Euroclad Gutter Flashing

Profile Filler

Euroclad 32/1000 0.7 Steel

Gutter Straps

Quattro bar and bracket

Euroclad 19/1000 0.4 Steel Liner

Insulation excluded for clarity

A range of mineral & glass wool insulations are available for different requirements