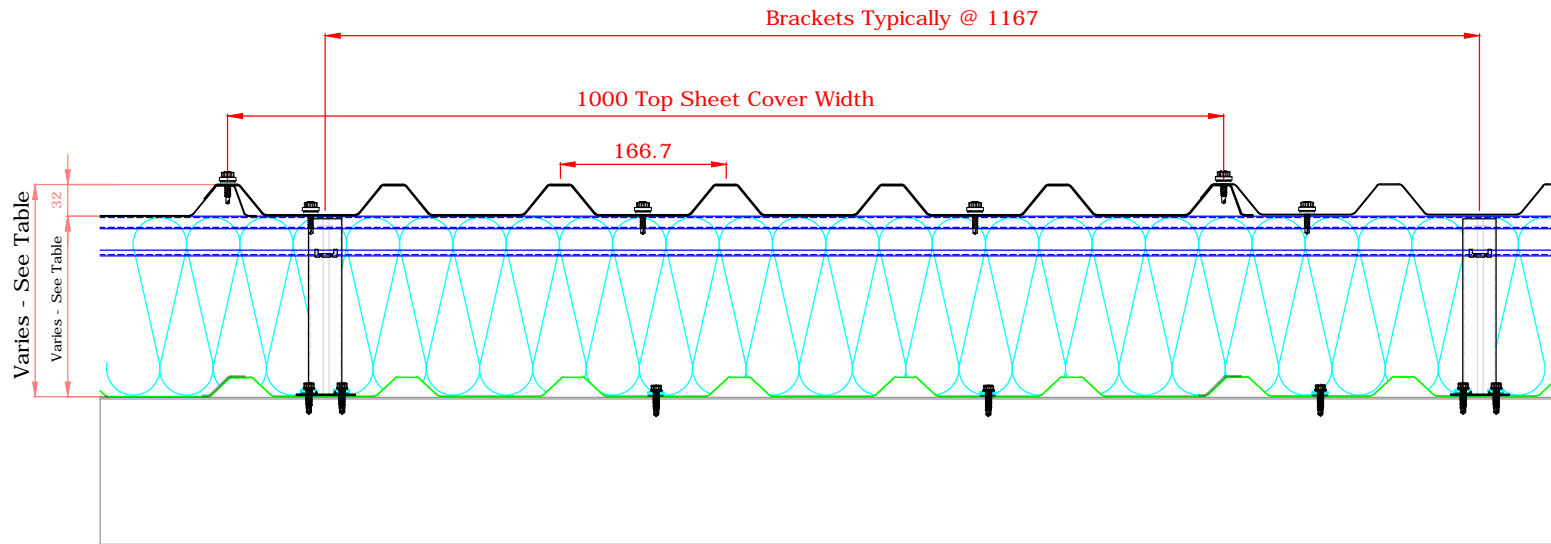


This draft drawing has been supplied by Euro Clad Ltd for the purpose of guidance free of charge. It is a suggested typical detail and as such should not be assumed suitable for any specific project or application. No responsibility is assumed for errors or misinterpretations resulting from the information contained in the drawing. Details are for illustration only and no liability is accepted. We reserve the right to change the details without notice. The drawing is copyright, it remains our property.

See drawing numbers FR4 and FR15 for non-fragile fixing requirements

To be read in conjunction with Elite System specification documents



Elite System 1

Bracket Height	Insulation Thickness	Insulation Value	Overall System Depth	U Value at 1.5M Centres	Nominal Weight/M ²	
					Knauf	Rockwool
100mm Quattro	100mm	0.040	133mm	0.45	12.60	14.10
180mm Quattro	180mm	0.040	213mm	0.25	13.64	16.34
200mm Quattro	200mm	0.040	233mm	0.23	13.90	16.90
220mm Quattro	220mm	0.040	253mm	0.20	14.16	17.46
240mm Quattro	240mm	0.040	273mm	0.19	14.42	18.02
260mm Quattro	260mm*	0.040	293mm	0.17	14.68	18.58
280mm Quattro	280mm	0.040	313mm	0.16	14.95	19.15

* Rockwool not available in standard thickness, weights calculated to next available thickness
 Other U Values available please consult Euroclad

Minimum recommended pitch 4°

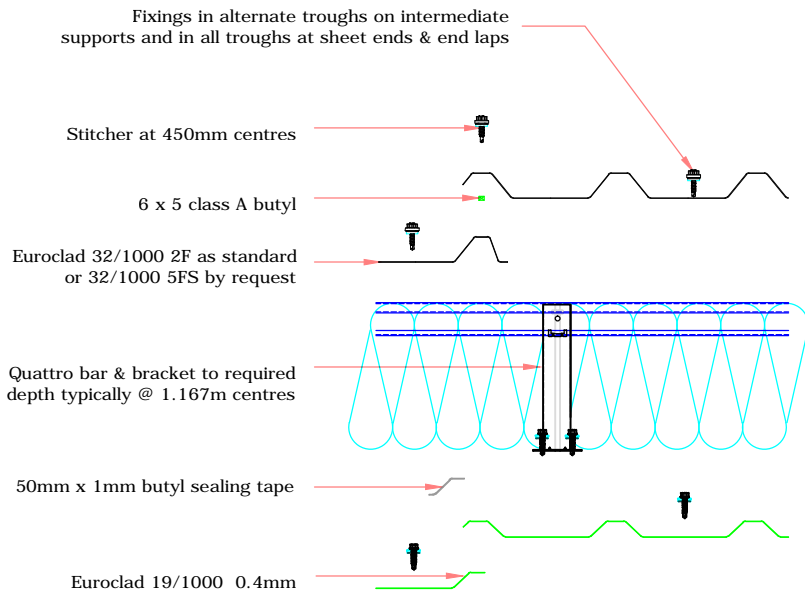
TITLE: Elite System 1
DWG NO: E1
DRAWN: MP
CHECK: PCL
DATE: August 2015
SCALE: NTS

This draft drawing has been supplied by Euro Clad Ltd for the purpose of guidance free of charge. It is a suggested typical detail and as such should not be assumed suitable for any specific project or application. No responsibility is assumed for errors or misinterpretations resulting from the information contained in the drawing. Details are for illustration only and no liability is accepted. We reserve the right to change the details without notice. The drawing is copyright, it remains our property.

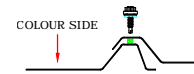
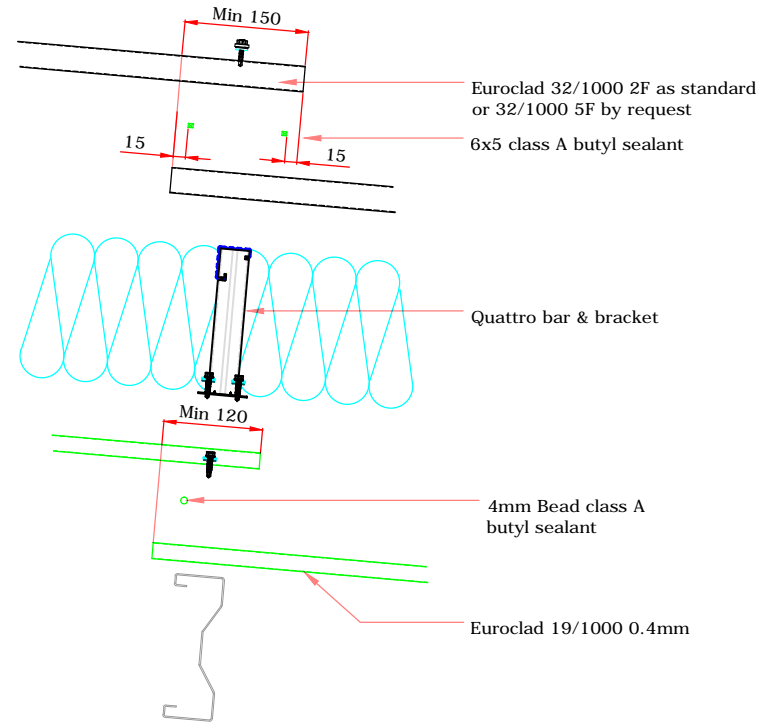
See drawing numbers FR4 and FR15 for non-fragile fixing requirements

To be read in conjunction with Elite System specification documents

ELITE SYSTEM 1 SIDE LAP DETAIL



ELITE SYSTEM 1 END LAP DETAIL



32_1000_2F 0.7 Steel Outer Sheet side lap detail



32_1000_5F 0.7 Steel Outer Sheet side lap detail



19_1000_2L 0.4 Steel Liner side lap detail

ELITE SYSTEMS

EUROCLAD

www.euroclad.com
Tel: + 44 (0)2922 010 101
Fax: + 44 (0)2922 010 122

TITLE: Elite System 1

DWG NO: E1

DRAWN: MP

CHECK: PCL

DATE: August 2015

SCALE: NTS

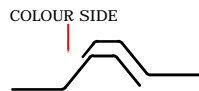
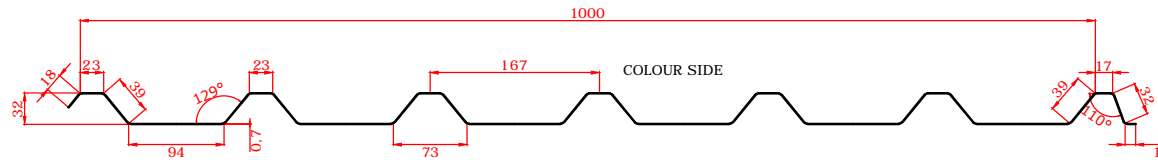
This draft drawing has been supplied by Euro Clad Ltd for the purpose of guidance free of charge. It is a suggested typical detail and as such should not be assumed suitable for any specific project or application. No responsibility is assumed for errors or misinterpretations resulting from the information contained in the drawing. Details are for illustration only and no liability is accepted. We reserve the right to change the details without notice. The drawing is copyright, it remains our property.

See drawing numbers FR4 and FR15 for non-fragile fixing requirements

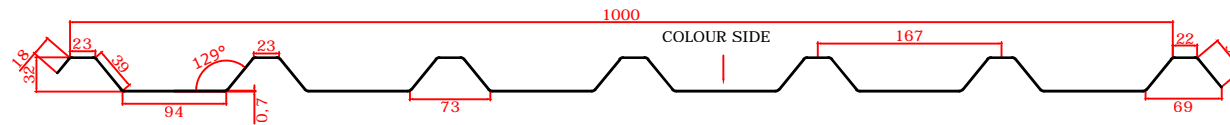
To be read in conjunction with Elite System specification documents



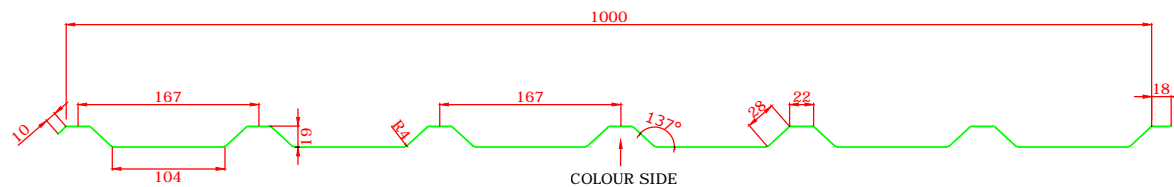
EUROCLAD 32/1000 2F 0.7mm EXTERNAL SHEET



EUROCLAD 32/1000 5F 0.7mm EXTERNAL SHEET



EUROCLAD 19/1000 0.4mm LINER



ELITE SYSTEMS

EUROCLAD

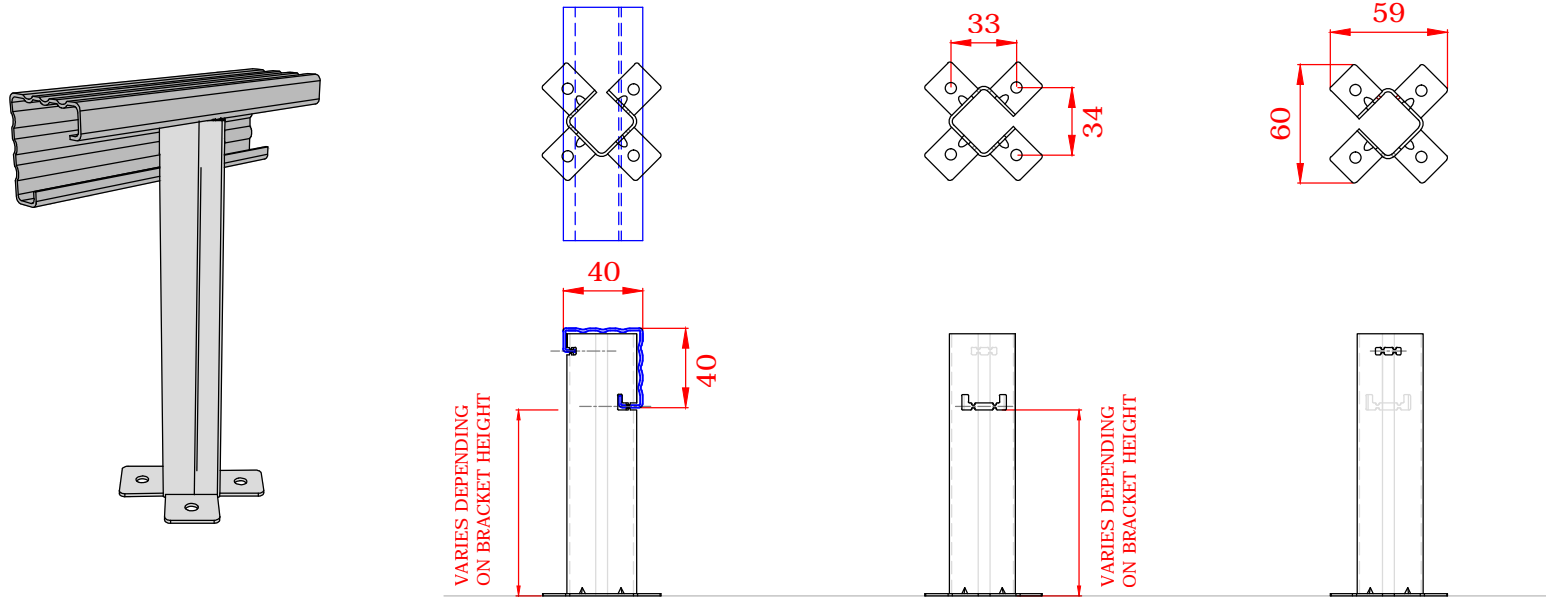
www.euroclad.com
Tel: +44 (0)2922 010 101
Fax: +44 (0)2922 010 122

TITLE: Elite System 1
DWG NO: E1
DRAWN: MP
CHECK: PCL
DATE: August 2015
SCALE: NTS

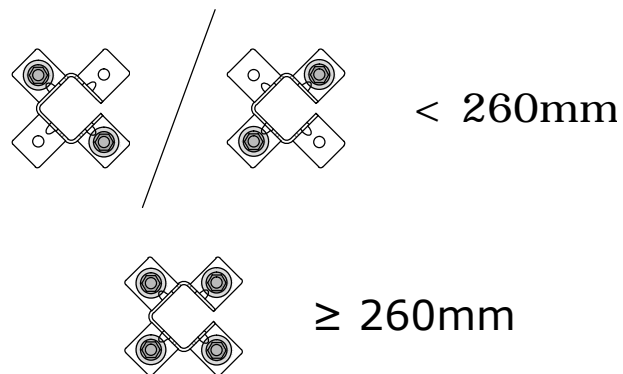
This draft drawing has been supplied by Euro Clad Ltd for the purpose of guidance free of charge. It is a suggested typical detail and as such should not be assumed suitable for any specific project or application. No responsibility is assumed for errors or misinterpretations resulting from the information contained in the drawing. Details are for illustration only and no liability is accepted. We reserve the right to change the details without notice. The drawing is copyright, it remains our property.

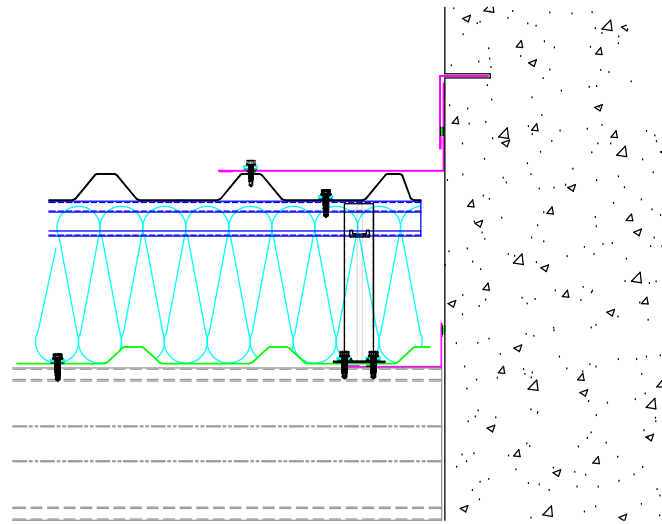
See drawing numbers FR4 and FR15 for non-fragile fixing requirements

To be read in conjunction with Elite System specification documents



Brackets less than 260mm require 2 fixings diagonally opposite.
Brackets 260mm or more require 4 fixings.





ELITE SYSTEMS



www.euroclad.com
Tel: +44 (0)2922 010 101
Fax: +44 (0)2922 010 122

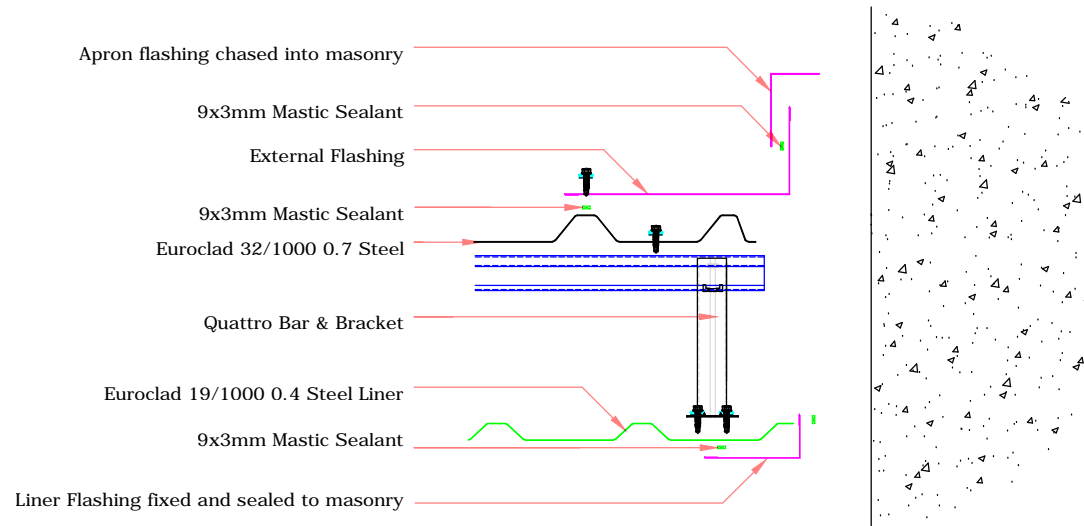
TITLE: Elite System 1
DWG NO: E1
DRAWN: MP
CHECK: PCL
DATE: August 2015
SCALE: NTS

This draft drawing has been supplied by Euro Clad Ltd for the purpose of guidance free of charge. It is a suggested typical detail and as such should not be assumed suitable for any specific project or application. No responsibility is assumed for errors or misinterpretations resulting from the information contained in the drawing. Details are for illustration only and no liability is accepted. We reserve the right to change the details without notice. The drawing is copyright, it remains our property.

See drawing numbers FR4 and FR15 for non-fragile fixing requirements

To be read in conjunction with Elite System specification documents

EUROCLAD ELITE SYSTEM 1 ROOF CONSTRUCTION



Insulation excluded for clarity
A range of mineral & glass wool insulations are available for different requirements

ELITE SYSTEMS



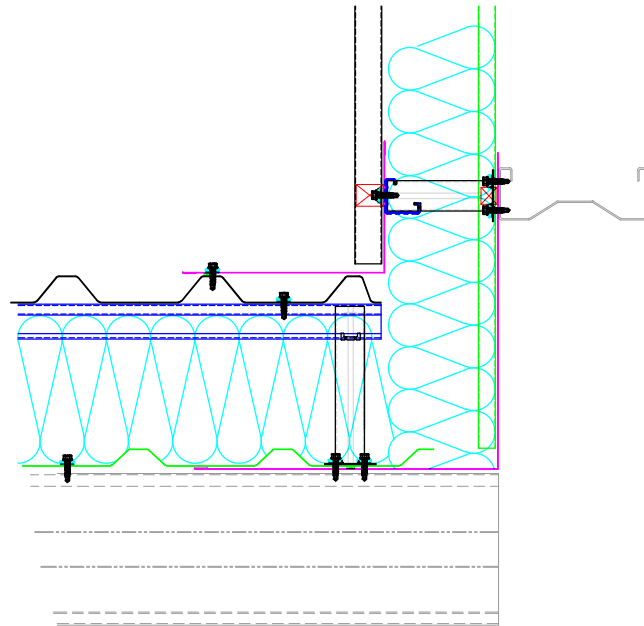
www.euroclad.com
Tel: +44 (0)2922 010 101
Fax: +44 (0)2922 010 122

TITLE: Elite System 1
DWG NO: E1
DRAWN: MP
CHECK: PCL
DATE: August 2015
SCALE: NTS

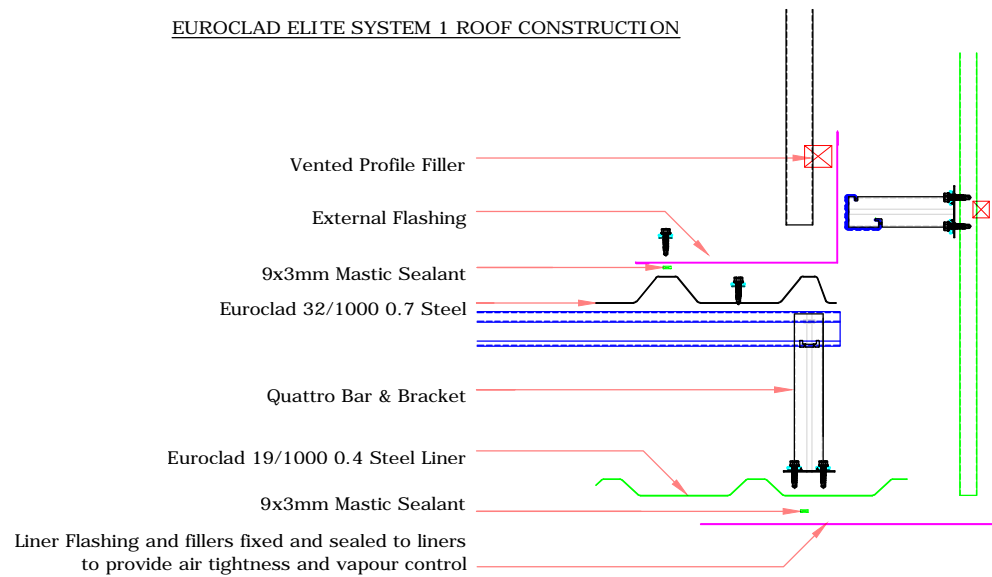
This draft drawing has been supplied by Euro Clad Ltd for the purpose of guidance free of charge. It is a suggested typical detail and as such should not be assumed suitable for any specific project or application. No responsibility is assumed for errors or misinterpretations resulting from the information contained in the drawing. Details are for illustration only and no liability is accepted. We reserve the right to change the details without notice. The drawing is copyright, it remains our property.

See drawing numbers FR4 and FR15 for non-fragile fixing requirements

To be read in conjunction with Elite System specification documents



EUROCLAD ELITE SYSTEM 1 ROOF CONSTRUCTION



Insulation excluded for clarity
A range of mineral & glass wool insulations are available for different requirements

ELITE SYSTEMS



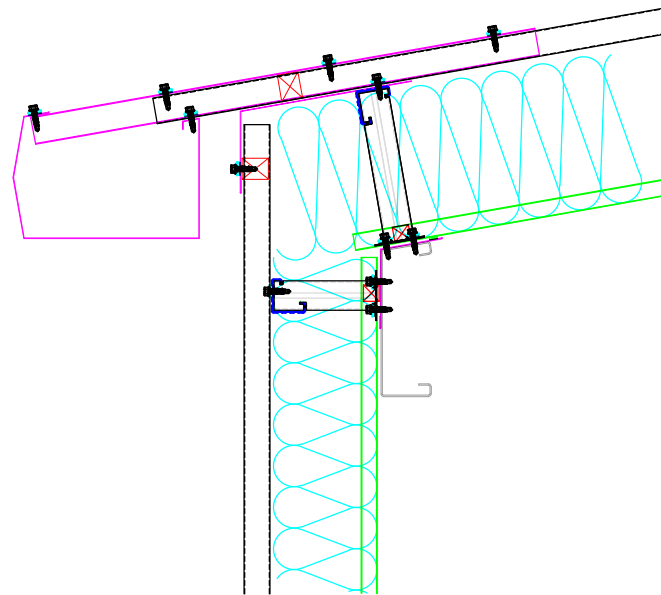
www.euroclad.com
Tel: +44 (0)2922 010 101
Fax: +44 (0)2922 010 122

TITLE: Elite System 1
DWG NO: E1
DRAWN: MP
CHECK: PCL
DATE: August 2015
SCALE: NTS

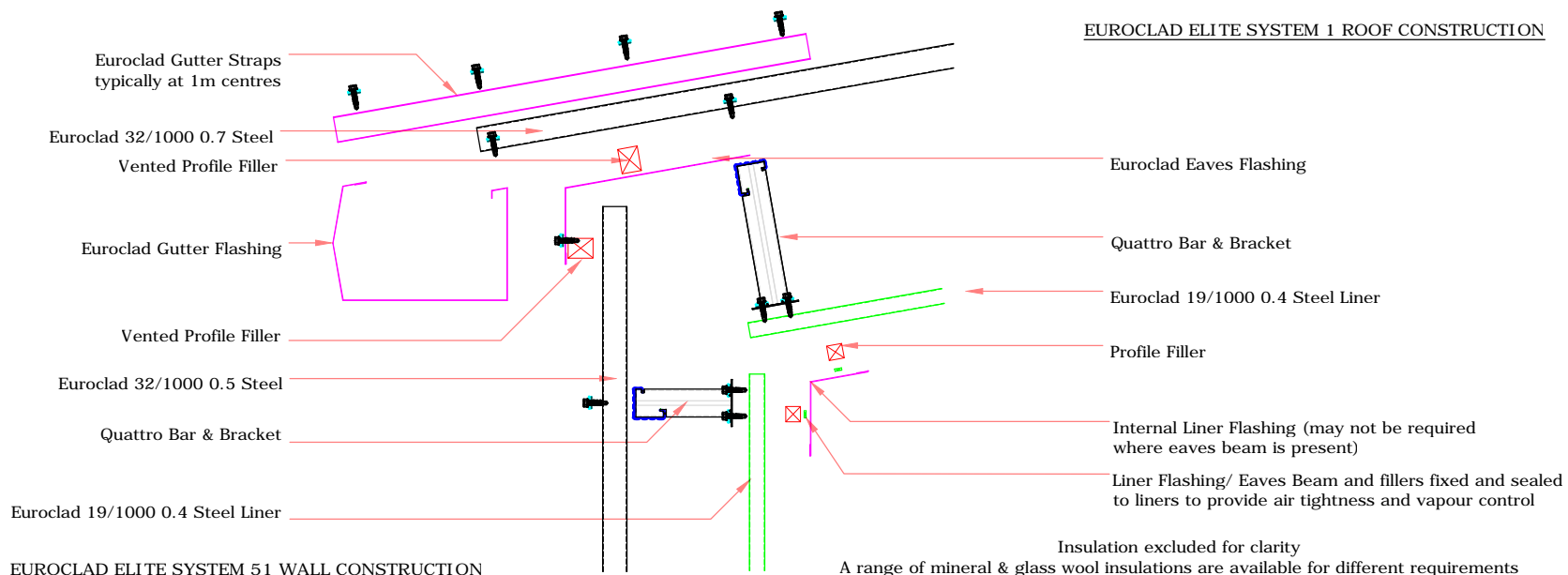
This draft drawing has been supplied by Euro Clad Ltd for the purpose of guidance free of charge. It is a suggested typical detail and as such should not be assumed suitable for any specific project or application. No responsibility is assumed for errors or misinterpretations resulting from the information contained in the drawing. Details are for illustration only and no liability is accepted. We reserve the right to change the details without notice. The drawing is copyright, it remains our property.

See drawing numbers FR4 and FR15 for non-fragile fixing requirements

To be read in conjunction with Elite System specification documents



EUROCLAD ELITE SYSTEM 1 ROOF CONSTRUCTION



EUROCLAD ELITE SYSTEM 51 WALL CONSTRUCTION

ELITE SYSTEMS

EUROCLAD

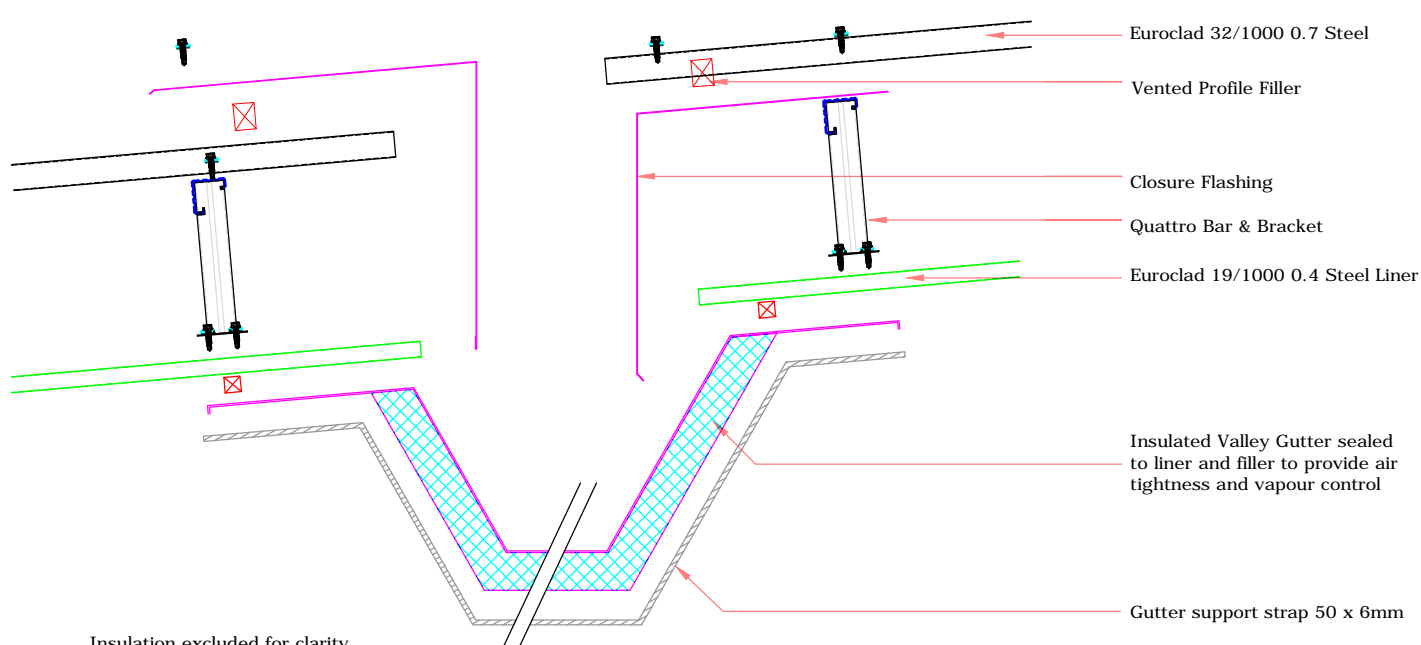
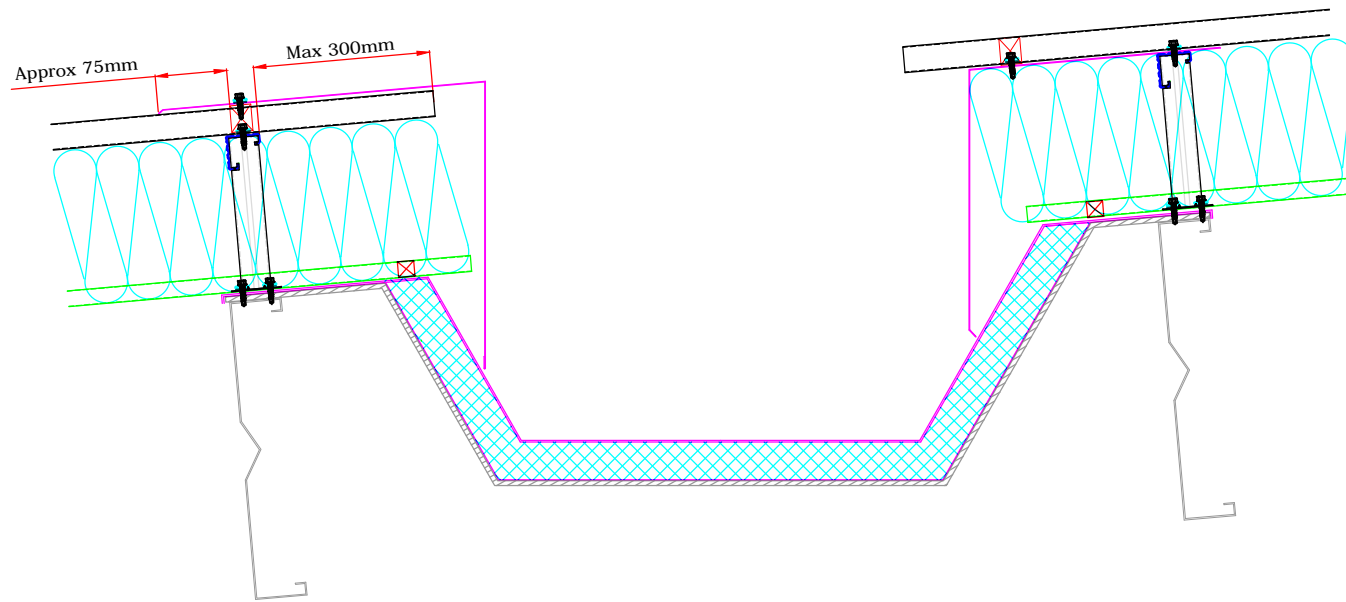
www.euroclad.com
Tel: +44 (0)2922 010 101
Fax: +44 (0)2922 010 122

TITLE: Elite System 1
DWG NO: E1
DRAWN: MP
CHECK: PCL
DATE: August 2015
SCALE: NTS

This draft drawing has been supplied by Euro Clad Ltd for the purpose of guidance free of charge. It is a suggested typical detail and as such should not be assumed suitable for any specific project or application. No responsibility is assumed for errors or misinterpretations resulting from the information contained in the drawing. Details are for illustration only and no liability is accepted. We reserve the right to change the details without notice. The drawing is copyright, it remains our property.

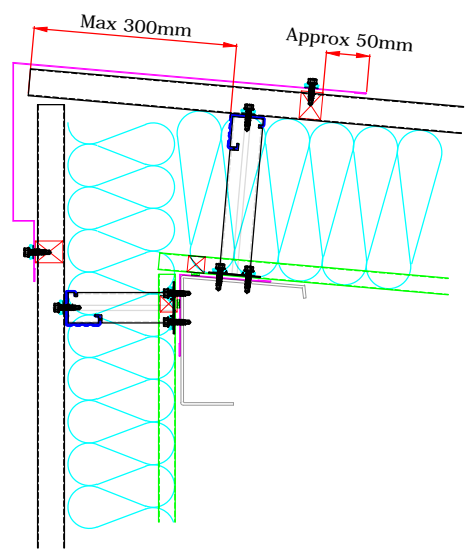
See drawing numbers FR4 and FR15 for non-fragile fixing requirements

To be read in conjunction with Elite System specification documents



Insulation excluded for clarity

A range of mineral & glass wool insulations are available for different requirements



ELITE SYSTEMS



www.euroclad.com
 Tel: +44 (0)2922 010 101
 Fax: +44 (0)2922 010 122

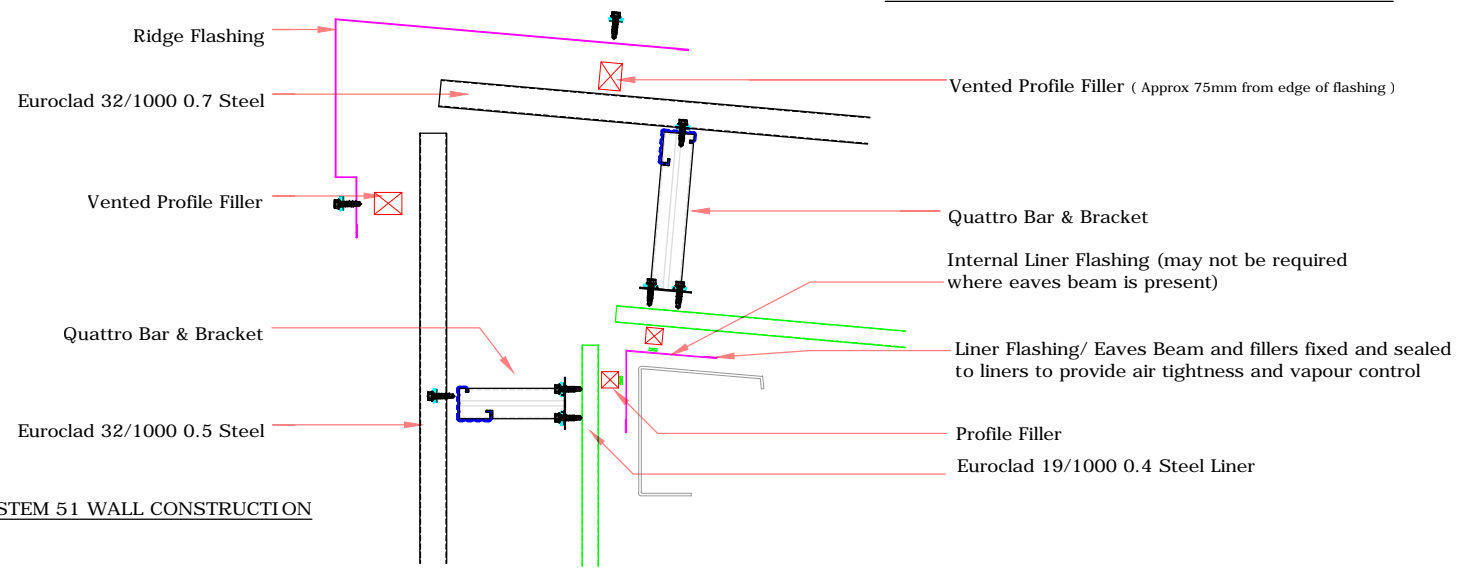
TITLE: Elite System 1
 DWG NO: E1
 DRAWN: MP
 CHECK: PCL
 DATE: August 2015
 SCALE: NTS

This draft drawing has been supplied by Euro Clad Ltd for the purpose of guidance free of charge. It is a suggested typical detail and as such should not be assumed suitable for any specific project or application. No responsibility is assumed for errors or misinterpretations resulting from the information contained in the drawing. Details are for illustration only and no liability is accepted. We reserve the right to change the details without notice. The drawing is copyright, it remains our property.

See drawing numbers FR4 and FR15 for non-fragile fixing requirements

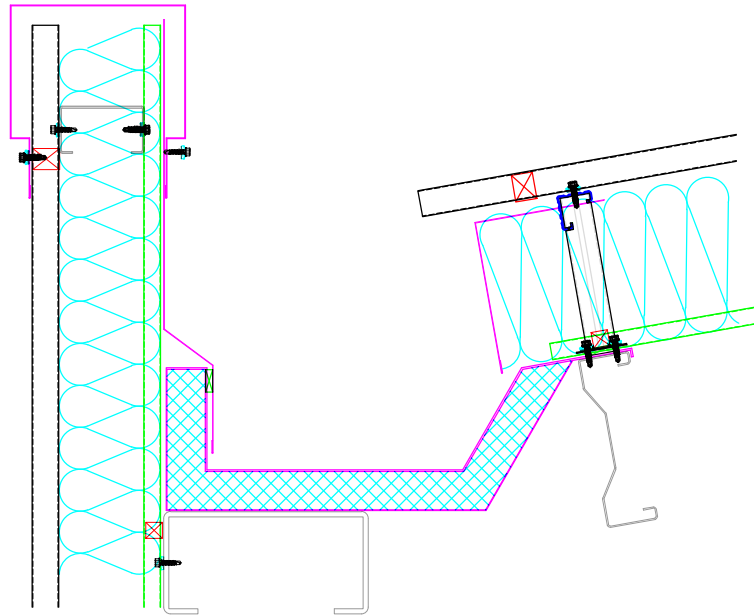
To be read in conjunction with Elite System specification documents

EUROCLAD ELITE SYSTEM 1 ROOF CONSTRUCTION



EUROCLAD ELITE SYSTEM 51 WALL CONSTRUCTION

Insulation excluded for clarity
 A range of mineral & glass wool insulations are available for different requirements



ELITE SYSTEMS



www.euroclad.com
 Tel: +44 (0)2922 010 101
 Fax: +44 (0)2922 010 122

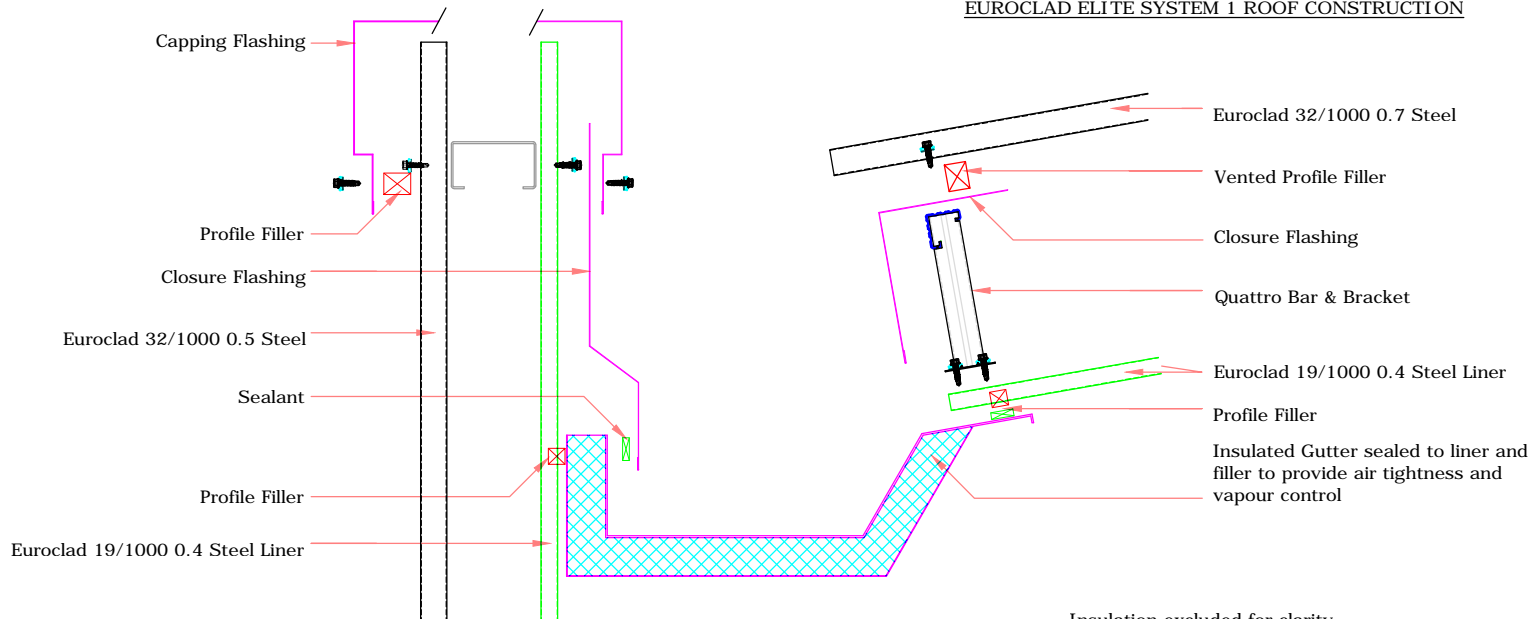
TITLE: Elite System 1
 DWG NO: E1
 DRAWN: MP
 CHECK: PCL
 DATE: August 2015
 SCALE: NTS

This draft drawing has been supplied by Euro Clad Ltd for the purpose of guidance free of charge. It is a suggested typical detail and as such should not be assumed suitable for any specific project or application. No responsibility is assumed for errors or misinterpretations resulting from the information contained in the drawing. Details are for illustration only and no liability is accepted. We reserve the right to change the details without notice. The drawing is copyright, it remains our property.

See drawing numbers FR4 and FR15 for non-fragile fixing requirements

To be read in conjunction with Elite System specification documents

EUROCLAD ELITE SYSTEM 1 ROOF CONSTRUCTION



Insulation excluded for clarity
 A range of mineral & glass wool insulations are available for different requirements

ELITE SYSTEMS



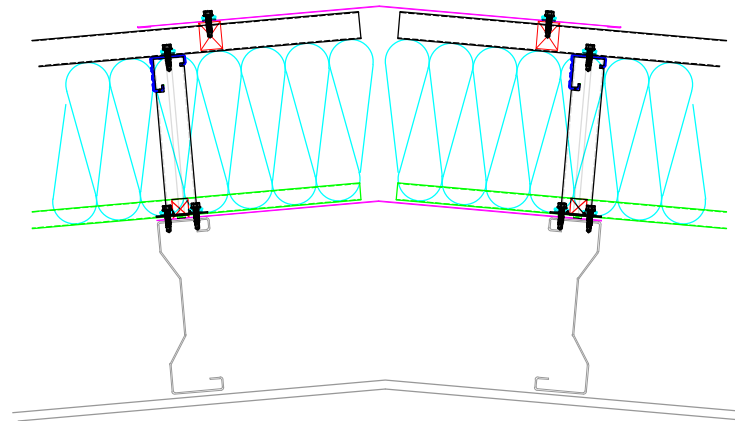
www.euroclad.com
 Tel: +44 (0)2922 010 101
 Fax: +44 (0)2922 010 122

TITLE: Elite System 1
 DWG NO: E1
 DRAWN: MP
 CHECK: PCL
 DATE: August 2015
 SCALE: NTS

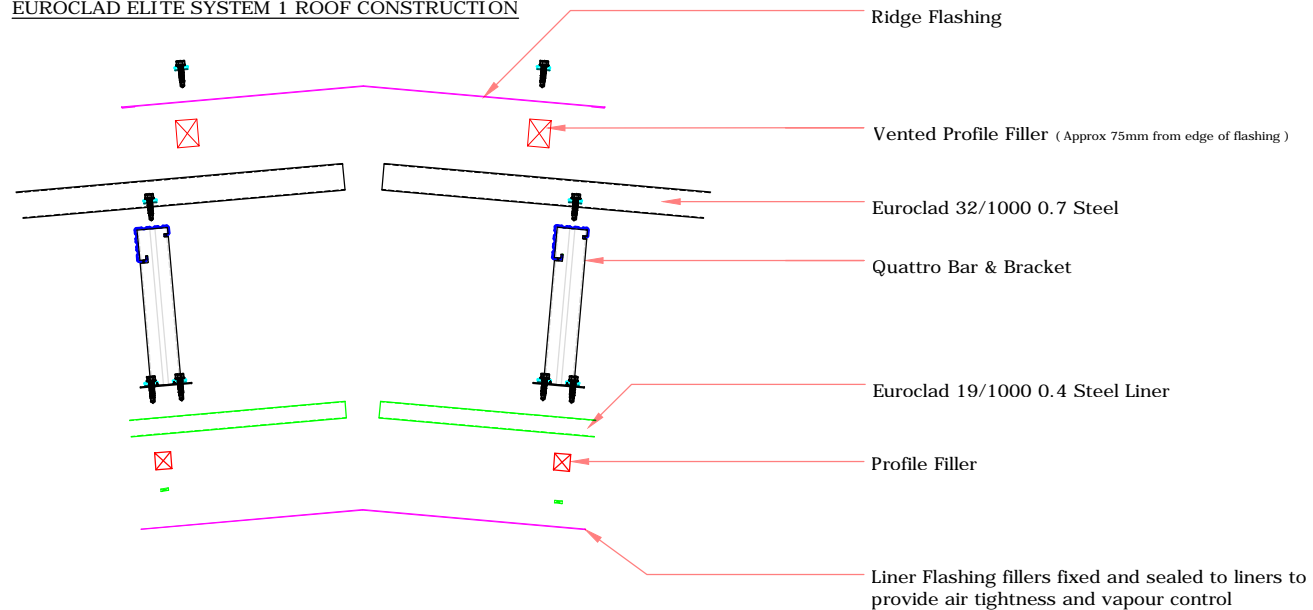
This draft drawing has been supplied by Euro Clad Ltd for the purpose of guidance free of charge. It is a suggested typical detail and as such should not be assumed suitable for any specific project or application. No responsibility is assumed for errors or misinterpretations resulting from the information contained in the drawing. Details are for illustration only and no liability is accepted. We reserve the right to change the details without notice. The drawing is copyright, it remains our property.

See drawing numbers FR4 and FR15 for non-fragile fixing requirements

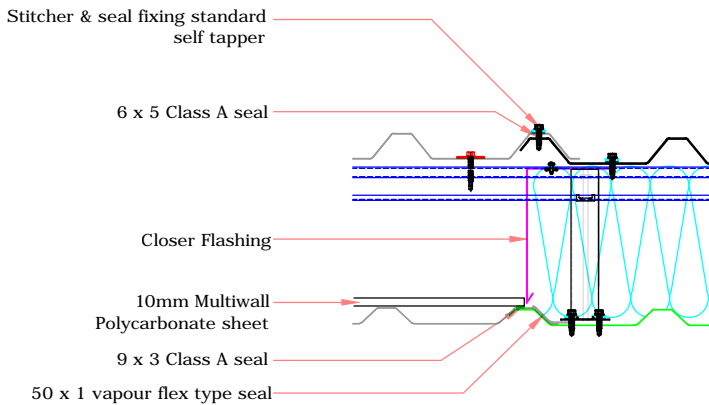
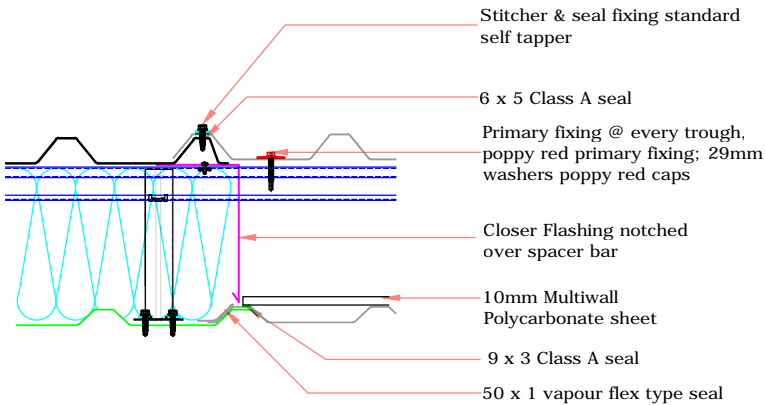
To be read in conjunction with Elite System specification documents



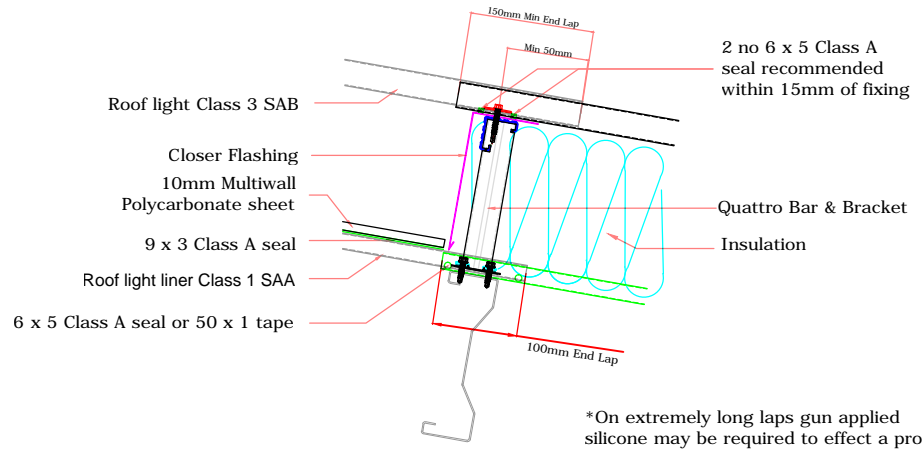
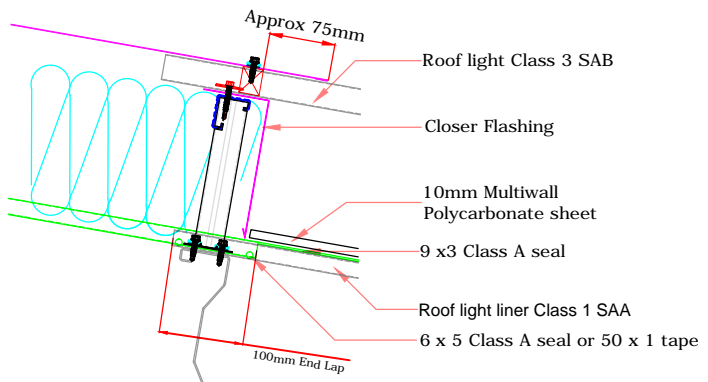
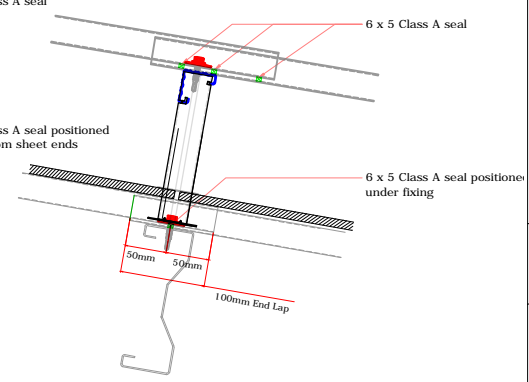
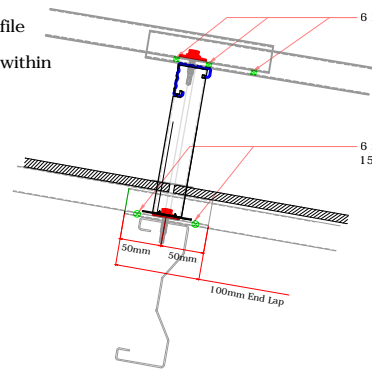
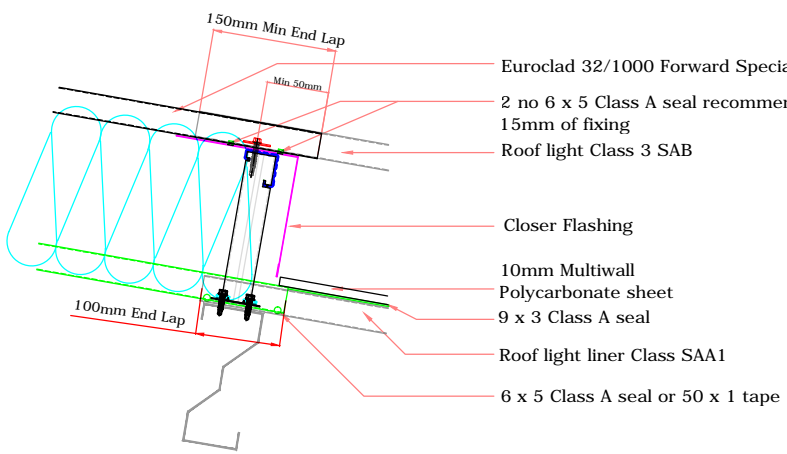
EUROCLAD ELITE SYSTEM 1 ROOF CONSTRUCTION



Insulation excluded for clarity
 A range of mineral & glass wool insulations are available for different requirements



Alternative lapping detail available please consult Euroclad Technical



*On extremely long laps gun applied silicone may be required to effect a proper seal. Sealant to ISO 11600-F-25LM should be used.

ELITE SYSTEMS



www.euroclad.com
Tel: +44 (0)2922 010 101
Fax: +44 (0)2922 010 122

TITLE: Elite System 1
DWG NO: E1
DRAWN: MP
CHECK: PCL
DATE: August 2015
SCALE: NTS

This draft drawing has been supplied by Euro Clad Ltd for the purpose of guidance free of charge. It is a suggested typical detail and as such should not be assumed suitable for any specific project or application. No responsibility is assumed for errors or misinterpretations resulting from the information contained in the drawing. Details are for illustration only and no liability is accepted. We reserve the right to change the details without notice. The drawing is copyright, it remains our property.

See drawing numbers FR4 and FR15 for non-fragile fixing requirements

To be read in conjunction with Elite System specification documents

ELITE SYSTEMS

EUROCLAD

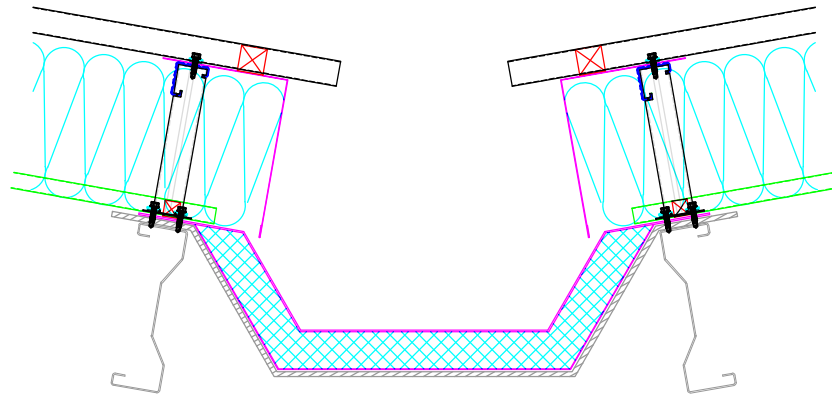
www.euroclad.com
Tel: +44 (0)2922 010 101
Fax: +44 (0)2922 010 122

TITLE: Elite System 1
DWG NO: E1
DRAWN: MP
CHECK: PCL
DATE: August 2015
SCALE: NTS

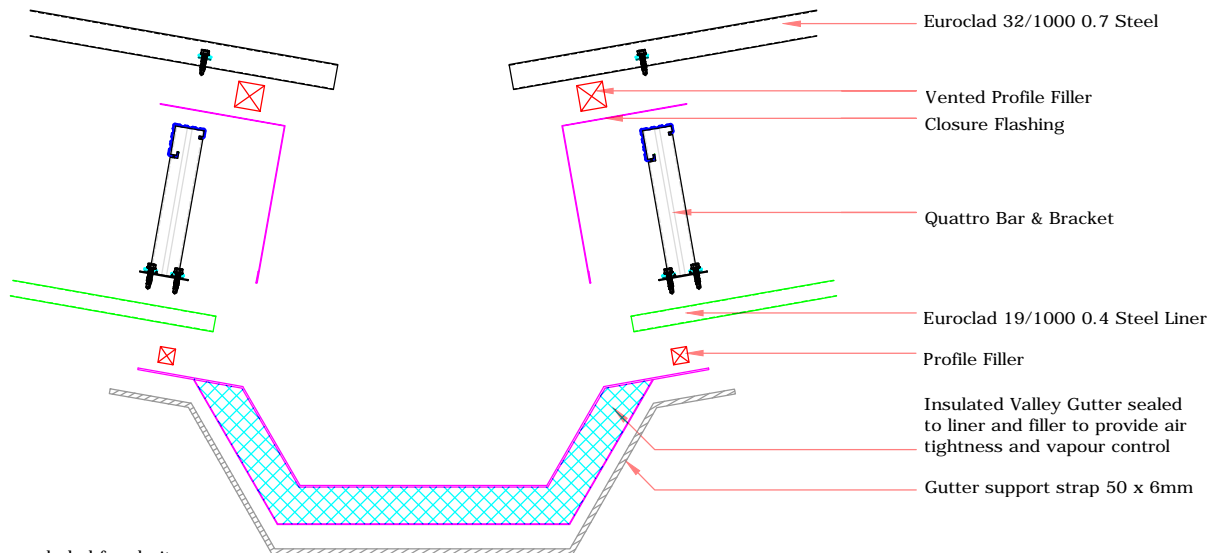
This draft drawing has been supplied by Euro Clad Ltd for the purpose of guidance free of charge. It is a suggested typical detail and as such should not be assumed suitable for any specific project or application. No responsibility is assumed for errors or misinterpretations resulting from the information contained in the drawing. Details are for illustration only and no liability is accepted. We reserve the right to change the details without notice. The drawing is copyright, it remains our property.

See drawing numbers FR4 and FR15 for non-fragile fixing requirements

To be read in conjunction with Elite System specification documents



EUROCLAD ELITE SYSTEM 1 ROOF CONSTRUCTION



Insulation excluded for clarity
A range of mineral & glass wool insulations are available for different requirements

ELITE SYSTEMS

EUROCLAD

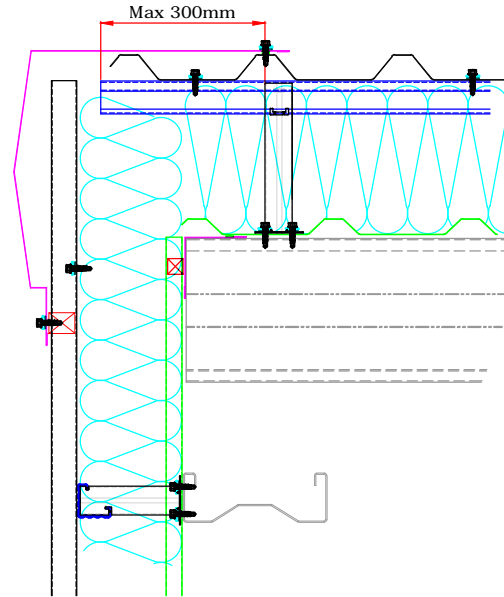
www.euroclad.com
 Tel: +44 (0)2922 010 101
 Fax: +44 (0)2922 010 122

TITLE: Elite System 1
 DWG NO: E1
 DRAWN: MP
 CHECK: PCL
 DATE: August 2015
 SCALE: NTS

This draft drawing has been supplied by Euro Clad Ltd for the purpose of guidance free of charge. It is a suggested typical detail and as such should not be assumed suitable for any specific project or application. No responsibility is assumed for errors or misinterpretations resulting from the information contained in the drawing. Details are for illustration only and no liability is accepted. We reserve the right to change the details without notice. The drawing is copyright, it remains our property.

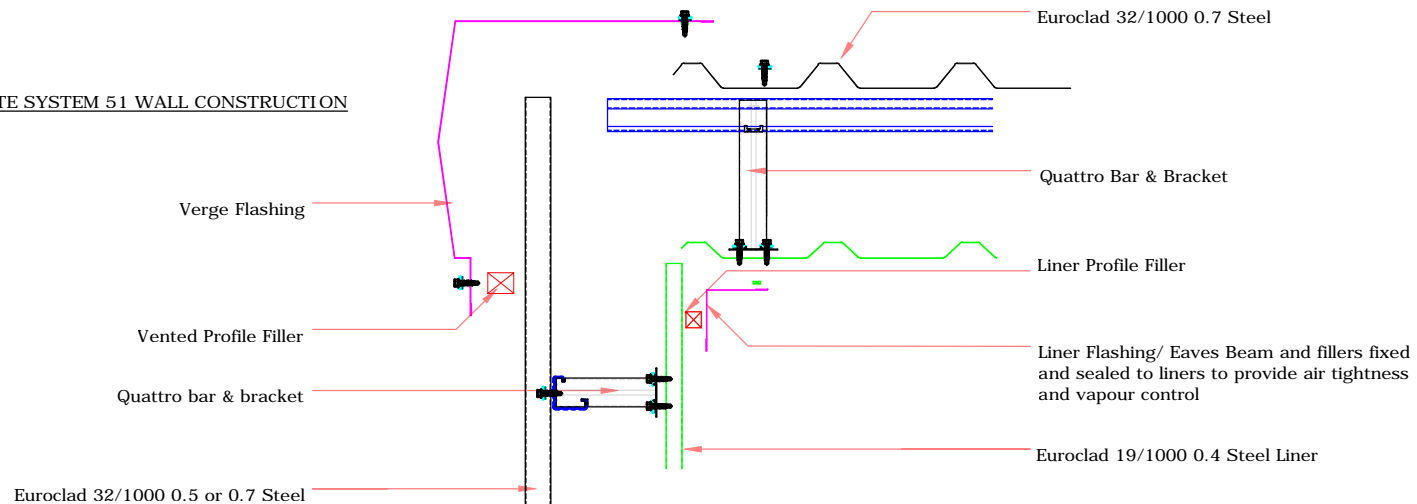
See drawing numbers FR4 and FR15 for non-fragile fixing requirements

To be read in conjunction with Elite System specification documents



EUROCLAD ELITE SYSTEM 1 ROOF CONSTRUCTION

EUROCLAD ELITE SYSTEM 51 WALL CONSTRUCTION



Insulation excluded for clarity
 A range of mineral & glass wool insulations are available for different requirements