

TITLE: Elite System 1

DWG NO: E1

DRAWN: MP

CHECK: PCL

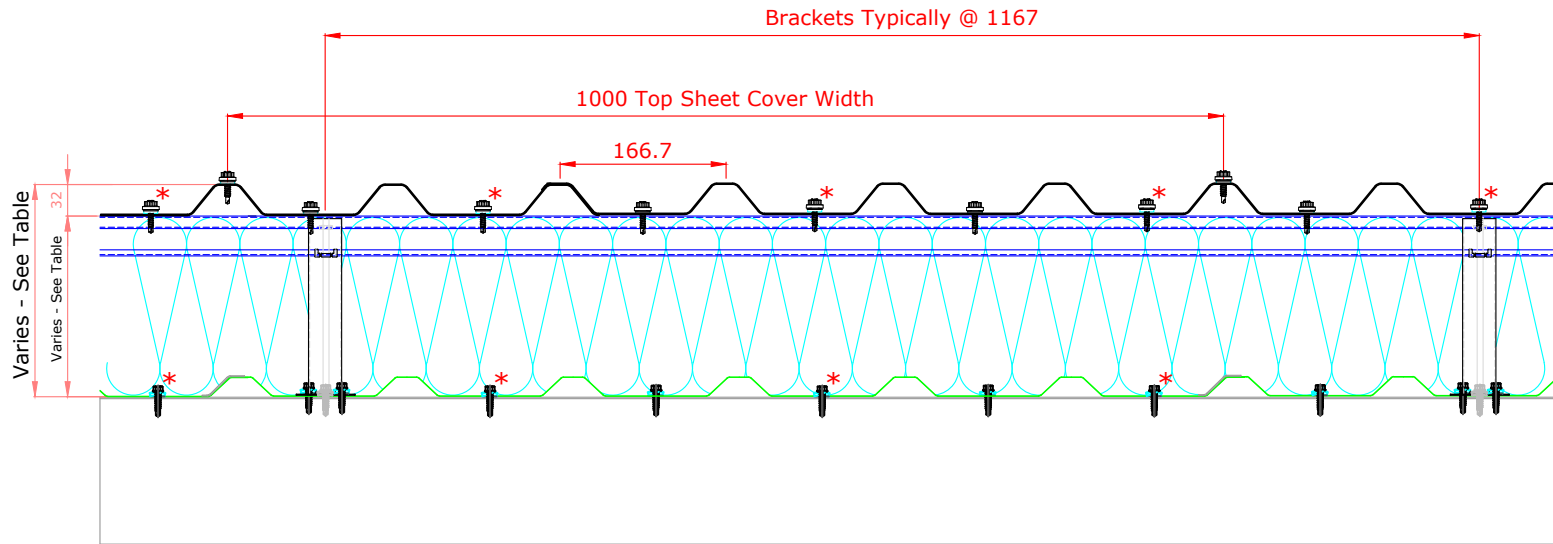
DATE: Jan 18

SCALE: NTS

This draft drawing has been supplied by Euro Clad Ltd for the purpose of guidance free of charge. It is a suggested typical detail and as such should not be assumed suitable for any specific project or application. No responsibility is assumed for errors or misinterpretations resulting from the information contained in the drawing. Details are for illustration only and no liability is accepted. We reserve the right to change the details without notice. The drawing is copyright, it remains our property.

See drawing numbers FR18 and FR15 for non-fragile fixing requirements

To be read in conjunction with Elite System specification documents



*Fixings with an asterisk are required on sheet ends and end laps only.

Elite System 1

Bracket Height	Insulation Thickness	Insulation Value	Overall System Depth	U Value at 1.5M Centres	Nominal Weight/M ²	
					Knauf	Rockwool
80mm Quattro	80mm	0.040	113mm	0.57	12.34	13.54
100mm Quattro	100mm	0.040	133mm	0.45	12.60	14.10
180mm Quattro	180mm	0.040	213mm	0.25	13.64	16.34
200mm Quattro	200mm	0.040	233mm	0.23	13.90	16.90
220mm Quattro	220mm	0.040	253mm	0.20	14.16	17.46
240mm Quattro	240mm	0.040	273mm	0.19	14.42	18.02
260mm Quattro	260mm*	0.040	293mm	0.17	14.68	18.58
280mm Quattro	280mm	0.040	313mm	0.16	14.95	19.15

* Rockwool not available in standard thickness, weights calculated to next available thickness
Other U Values available please consult Euroclad

Minimum recommended pitch 4°

ELITE SYSTEMS



www.euroclad.com
Tel: +44 (0)2922 010 101
Fax: +44 (0)2922 010 122

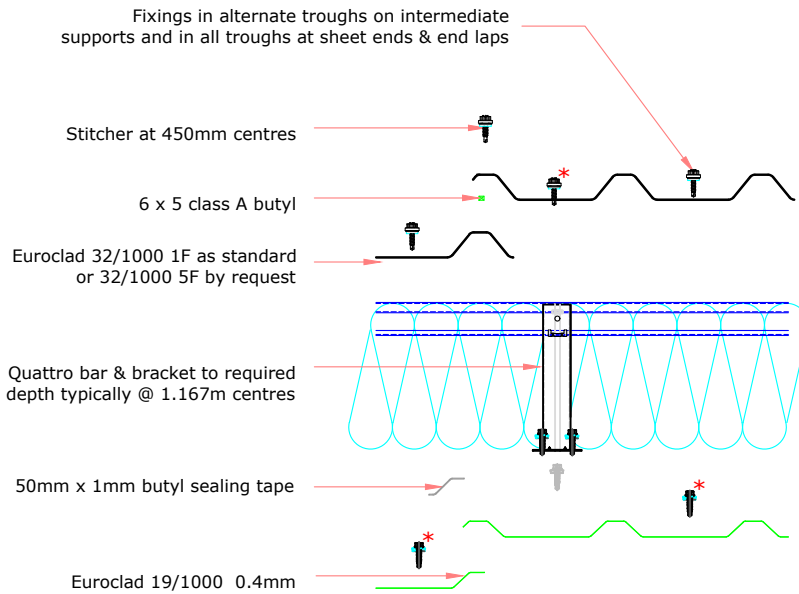
TITLE: Elite System 1
DWG NO: E1
DRAWN: MP
CHECK: PCL
DATE: Jan 18
SCALE: NTS

This draft drawing has been supplied by Euro Clad Ltd for the purpose of guidance free of charge. It is a suggested typical detail and as such should not be assumed suitable for any specific project or application. No responsibility is assumed for errors or misinterpretations resulting from the information contained in the drawing. Details are for illustration only and no liability is accepted. We reserve the right to change the details without notice. The drawing is copyright, it remains our property.

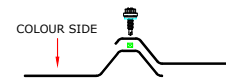
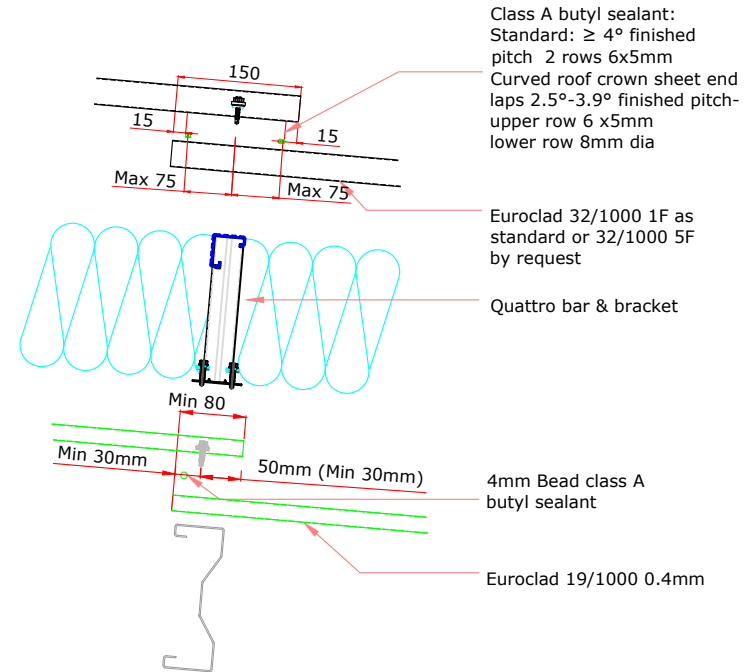
See drawing numbers FR18 and FR15 for non-fragile fixing requirements

To be read in conjunction with Elite System specification documents

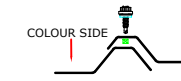
ELITE SYSTEM 1 SIDE LAP DETAIL



ELITE SYSTEM 1 END LAP DETAIL



32_1000_1F 0.7 Steel Outer Sheet side lap detail



32_1000_5F 0.7 Steel Outer Sheet side lap detail



19_1000_2L 0.4 Steel Liner side lap detail

ELITE SYSTEMS

EUROCLAD

www.euroclad.com
Tel: +44 (0)2922 010 101
Fax: +44 (0)2922 010 122

TITLE: Elite System 1
DWG NO: E1
DRAWN: MP
CHECK: PCL
DATE: Jan 18
SCALE: NTS

This draft drawing has been supplied by Euro Clad Ltd for the purpose of guidance free of charge. It is a suggested typical detail and as such should not be assumed suitable for any specific project or application. No responsibility is assumed for errors or misinterpretations resulting from the information contained in the drawing. Details are for illustration only and no liability is accepted. We reserve the right to change the details without notice. The drawing is copyright, it remains our property.

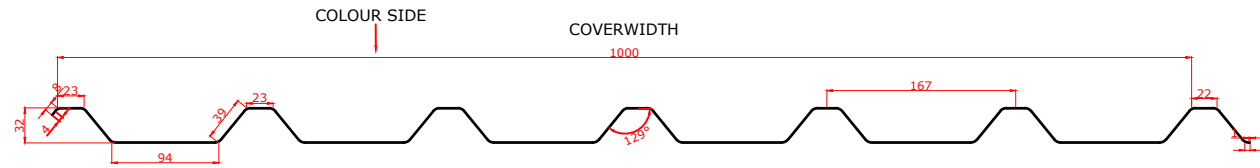
See drawing numbers FR18 and FR15 for non-fragile fixing requirements

To be read in conjunction with Elite System specification documents

COLOUR SIDE

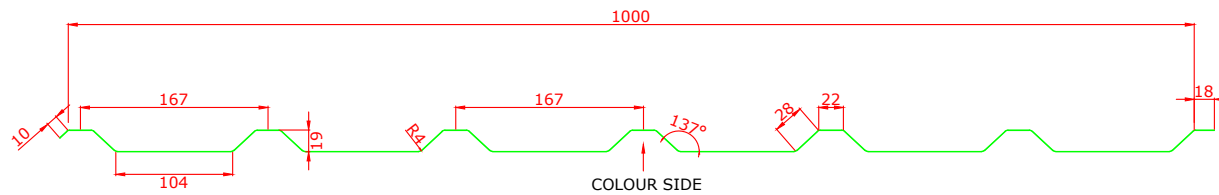


EUROCLAD 32/1000 1F 0.7mm EXTERNAL SHEET



COLOUR SIDE

EUROCLAD 19/1000 0.4mm LINER



ELITE SYSTEMS

EUROCLAD

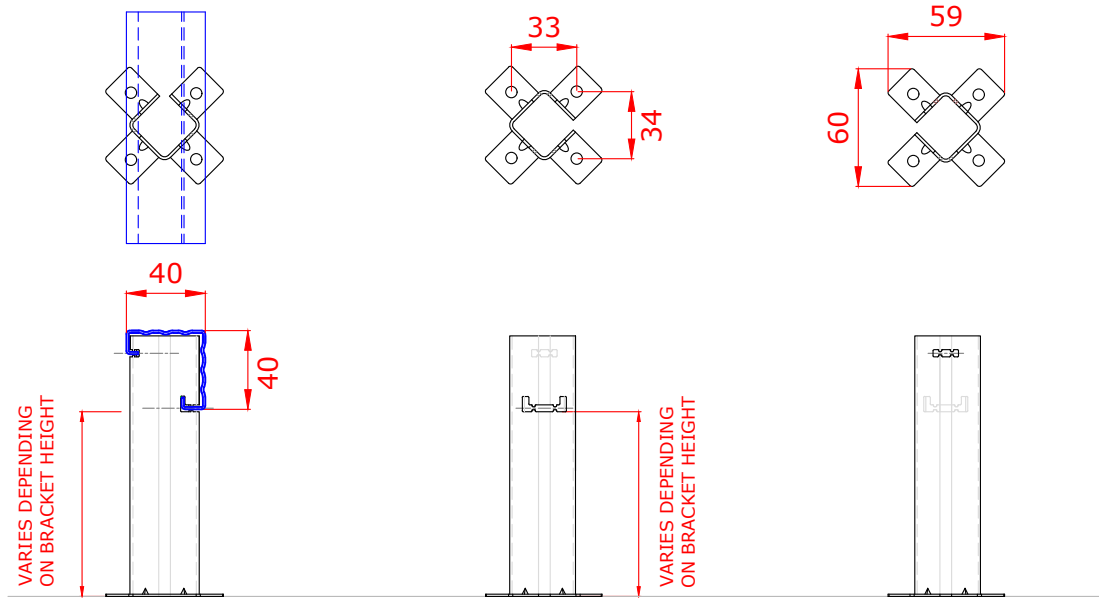
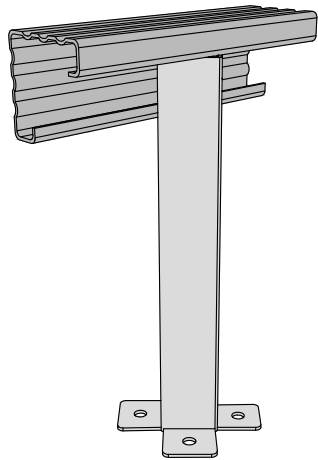
www.euroclad.com
Tel: +44 (0)2922 010 101
Fax: +44 (0)2922 010 122

TITLE: Elite System 1
DWG NO: E1
DRAWN: MP
CHECK: PCL
DATE: Jan 18
SCALE: NTS

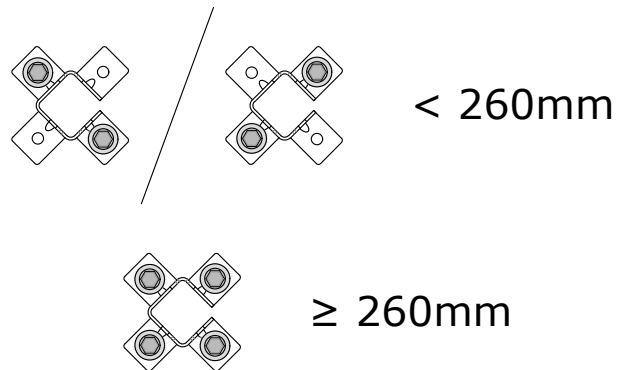
This draft drawing has been supplied by Euro Clad Ltd for the purpose of guidance free of charge. It is a suggested typical detail and as such should not be assumed suitable for any specific project or application. No responsibility is assumed for errors or misinterpretations resulting from the information contained in the drawing. Details are for illustration only and no liability is accepted. We reserve the right to change the details without notice. The drawing is copyright, it remains our property.

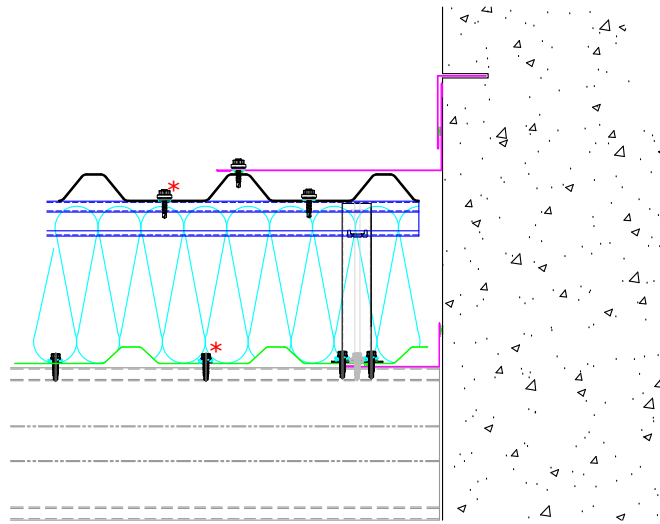
See drawing numbers FR18 and FR15 for non-fragile fixing requirements

To be read in conjunction with Elite System specification documents



Brackets less than 260mm require 2 fixings diagonally opposite.
Brackets 260mm or more require 4 fixings.





ELITE SYSTEMS

EUROCLAD

www.euroclad.com
Tel: +44 (0)2922 010 101
Fax: +44 (0)2922 010 122

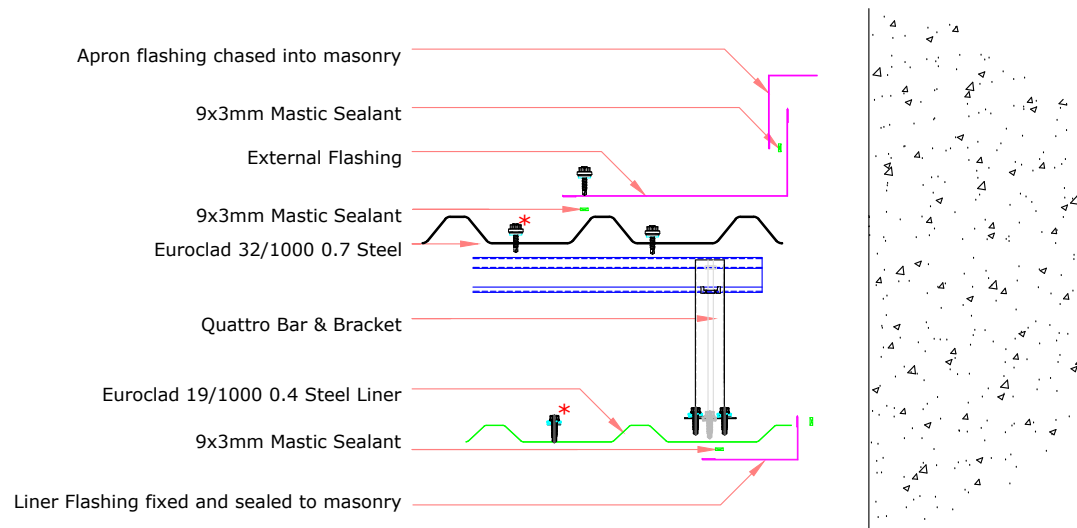
TITLE: Elite System 1
DWG NO: E1
DRAWN: MP
CHECK: PCL
DATE: Jan 18
SCALE: NTS

This draft drawing has been supplied by Euro Clad Ltd for the purpose of guidance free of charge. It is a suggested typical detail and as such should not be assumed suitable for any specific project or application. No responsibility is assumed for errors or misinterpretations resulting from the information contained in the drawing. Details are for illustration only and no liability is accepted. We reserve the right to change the details without notice. The drawing is copyright, it remains our property.

See drawing numbers FR18 and FR15 for non-fragile fixing requirements

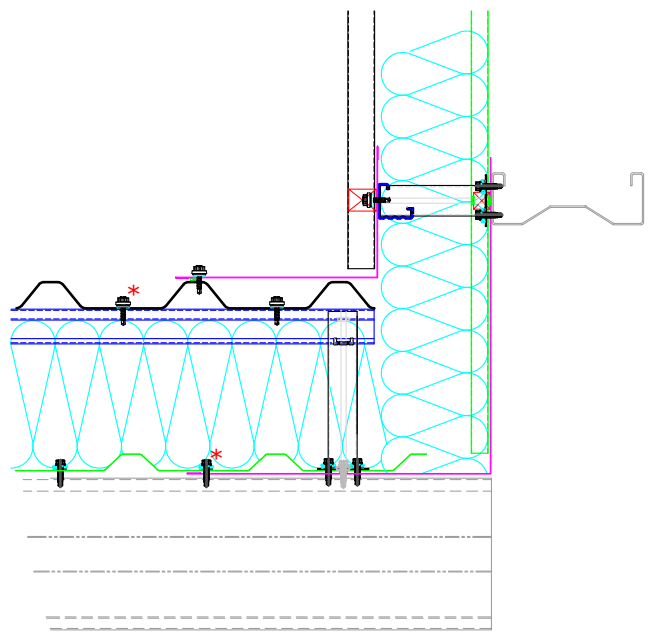
To be read in conjunction with Elite System specification documents

EUROCLAD ELITE SYSTEM 1 ROOF CONSTRUCTION

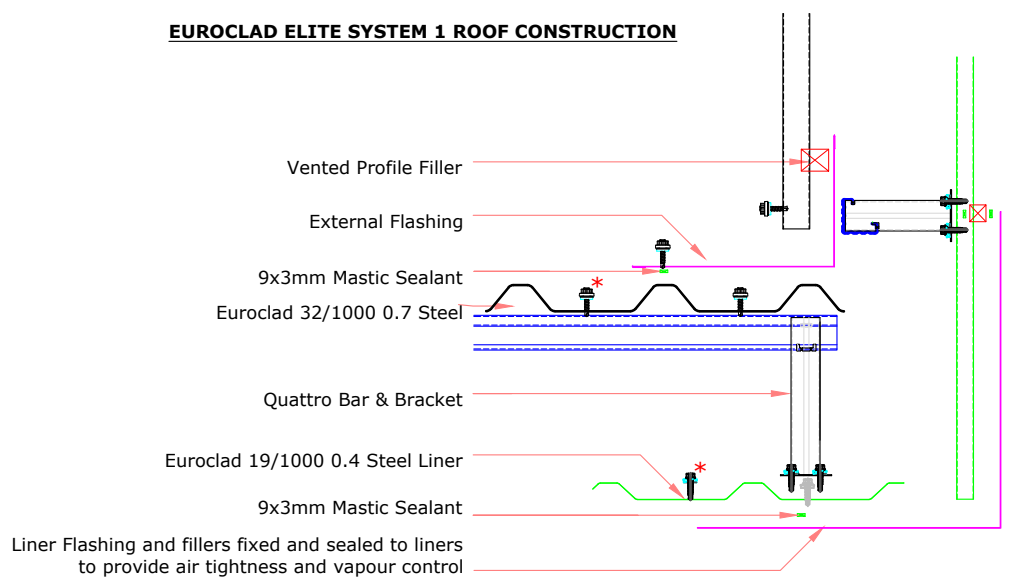


Insulation excluded for clarity
A range of mineral & glass wool insulations are available
for different requirements

*Fixings with an asterisk are required on sheet ends and end laps only.



EUROCLAD ELITE SYSTEM 1 ROOF CONSTRUCTION



Insulation excluded for clarity
 A range of mineral & glass wool insulations are available
 for different requirements

*Fixings with an asterisk are required
 on sheet ends and end laps only.

ELITE SYSTEMS



www.euroclad.com
 Tel: +44 (0)2922 010 101
 Fax: +44 (0)2922 010 122

TITLE: Elite System 1
 DWG NO: E1
 DRAWN: MP
 CHECK: PCL
 DATE: Jan 18
 SCALE: NTS

This draft drawing has been supplied by Euro Clad Ltd for the purpose of guidance free of charge. It is a suggested typical detail and as such should not be assumed suitable for any specific project or application. No responsibility is assumed for errors or misinterpretations resulting from the information contained in the drawing. Details are for illustration only and no liability is accepted. We reserve the right to change the details without notice. The drawing is copyright, it remains our property.

See drawing numbers FR18 and FR15 for non-fragile fixing requirements

To be read in conjunction with Elite System specification documents

ELITE SYSTEMS



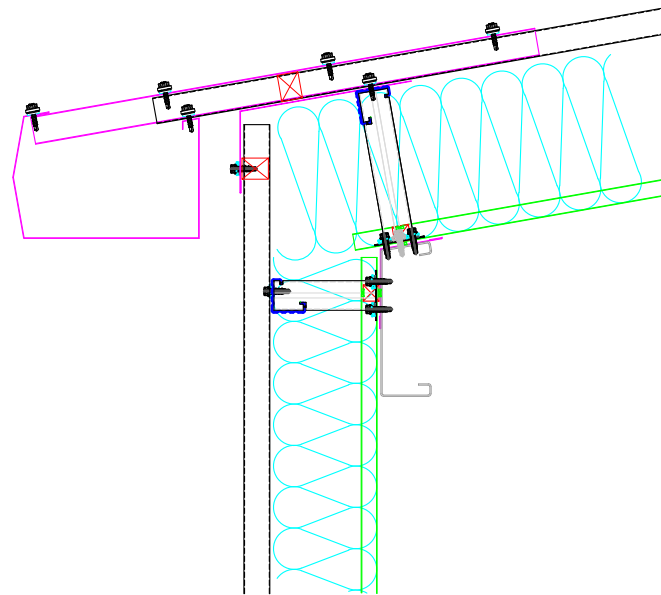
www.euroclad.com
 Tel: +44 (0)2922 010 101
 Fax: +44 (0)2922 010 122

TITLE: Elite System 1
 DWG NO: E1
 DRAWN: MP
 CHECK: PCL
 DATE: Jan 18
 SCALE: NTS

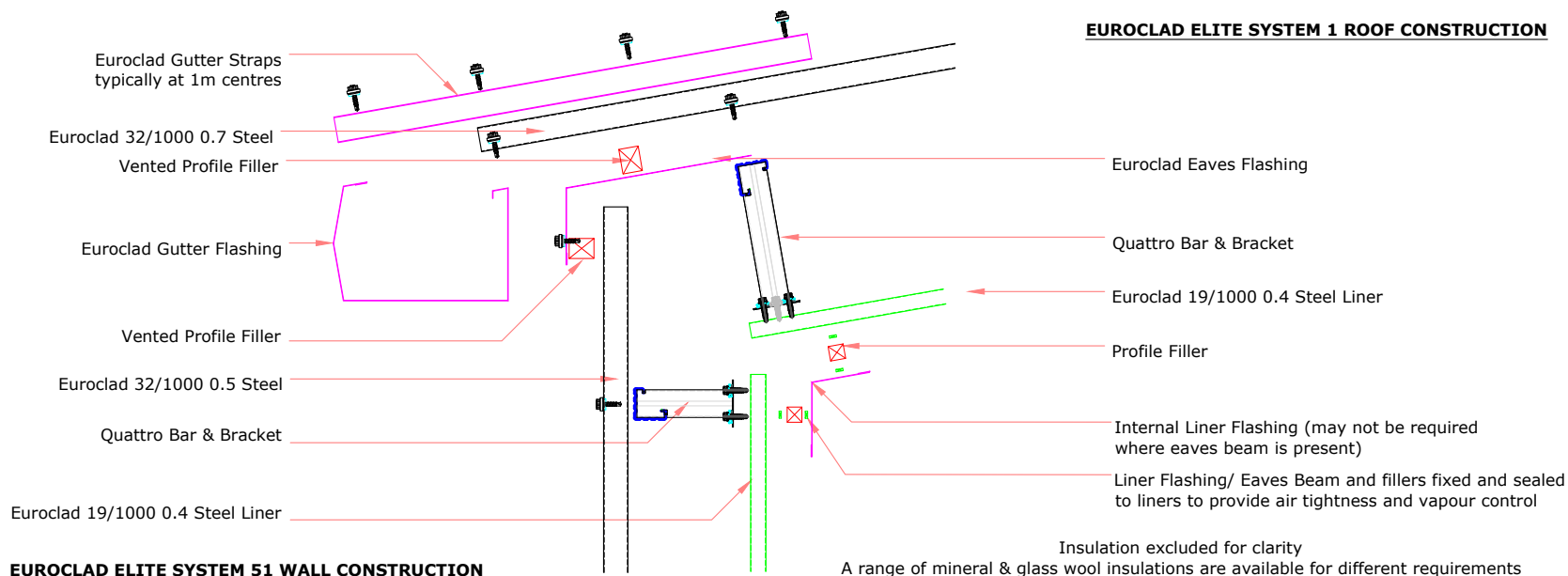
This draft drawing has been supplied by Euro Clad Ltd for the purpose of guidance free of charge. It is a suggested typical detail and as such should not be assumed suitable for any specific project or application. No responsibility is assumed for errors or misinterpretations resulting from the information contained in the drawing. Details are for illustration only and no liability is accepted. We reserve the right to change the details without notice. The drawing is copyright, it remains our property.

See drawing numbers FR18 and FR15 for non-fragile fixing requirements

To be read in conjunction with Elite System specification documents



EUROCLAD ELITE SYSTEM 1 ROOF CONSTRUCTION



EUROCLAD ELITE SYSTEM 51 WALL CONSTRUCTION

ELITE SYSTEMS

EUROCLAD

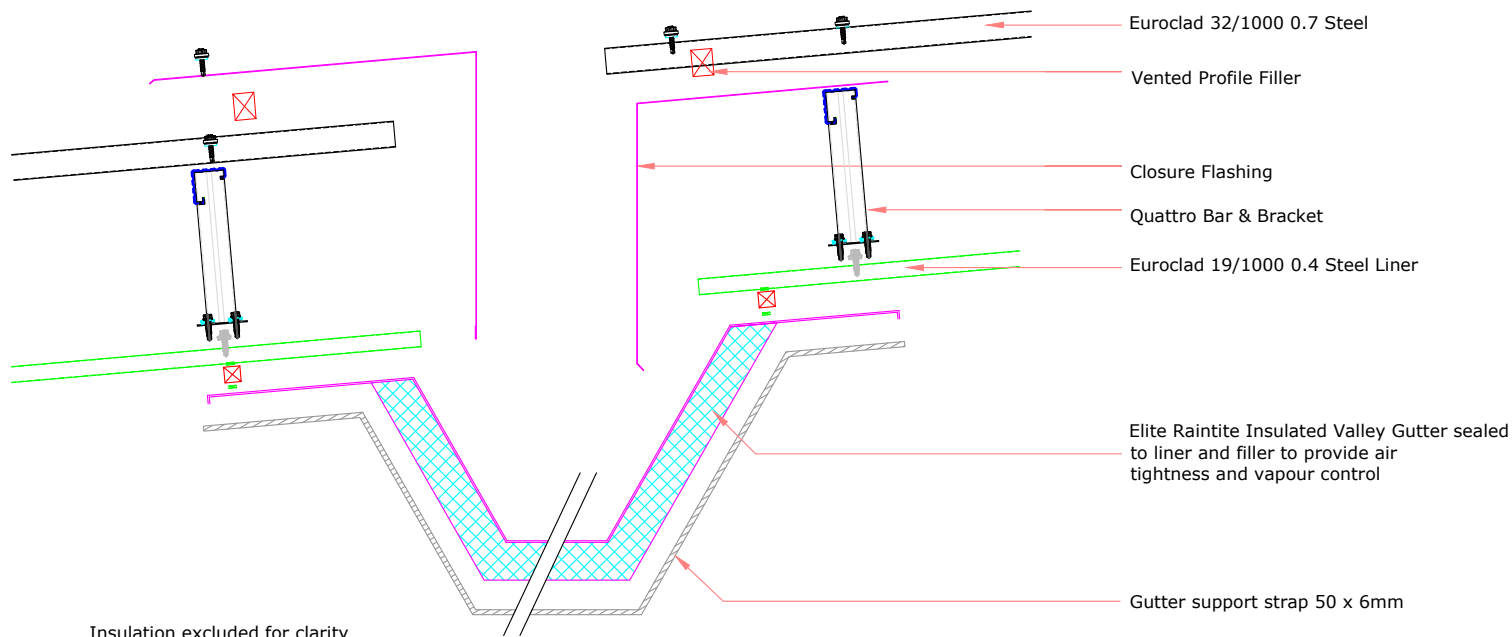
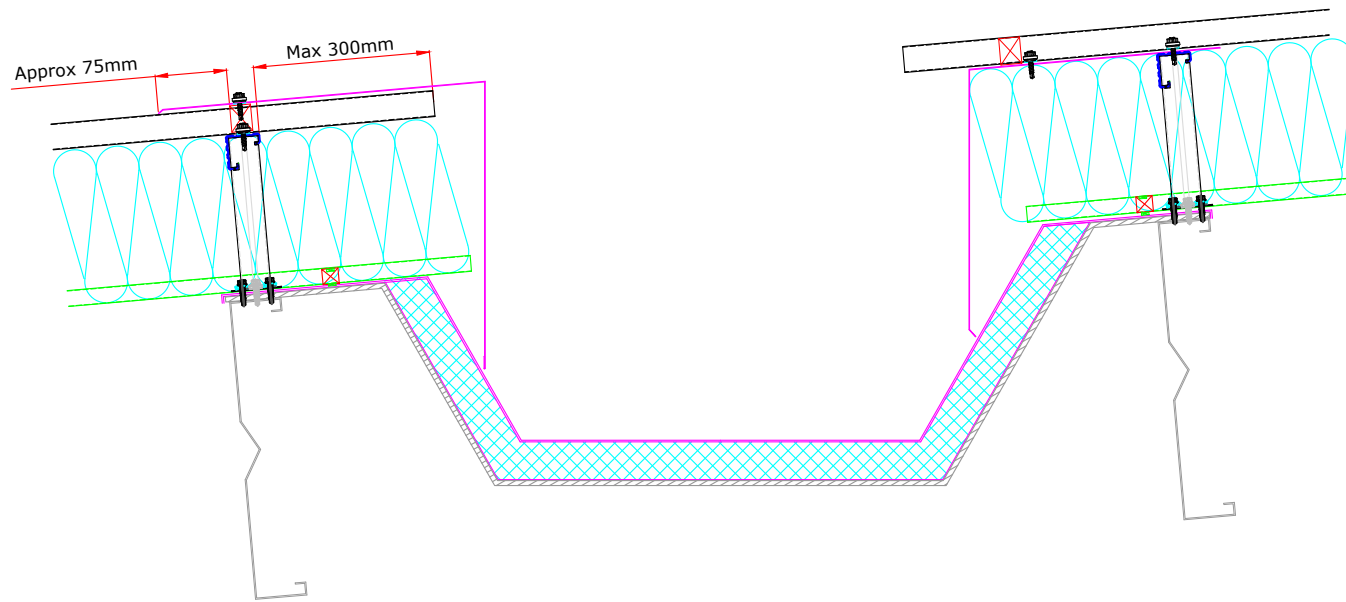
www.euroclad.com
 Tel: +44 (0)2922 010 101
 Fax: +44 (0)2922 010 122

TITLE: Elite System 1
 DWG NO: E1
 DRAWN: MP
 CHECK: PCL
 DATE: Jan 18
 SCALE: NTS

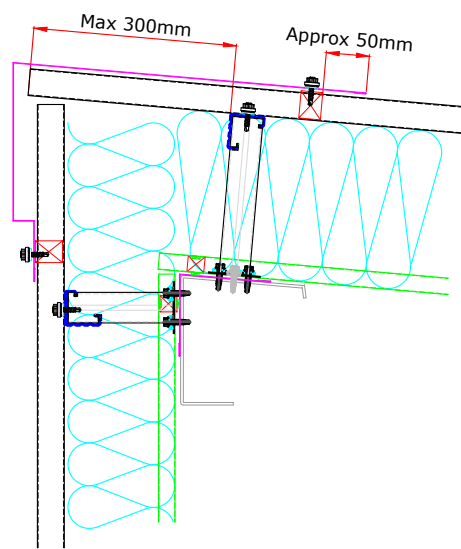
This draft drawing has been supplied by Euro Clad Ltd for the purpose of guidance free of charge. It is a suggested typical detail and as such should not be assumed suitable for any specific project or application. No responsibility is assumed for errors or misinterpretations resulting from the information contained in the drawing. Details are for illustration only and no liability is accepted. We reserve the right to change the details without notice. The drawing is copyright, it remains our property.

See drawing numbers FR18 and FR15 for non-fragile fixing requirements

To be read in conjunction with Elite System specification documents



Insulation excluded for clarity
 A range of mineral & glass wool insulations are available for different requirements



ELITE SYSTEMS



www.euroclad.com
 Tel: +44 (0)2922 010 101
 Fax: +44 (0)2922 010 122

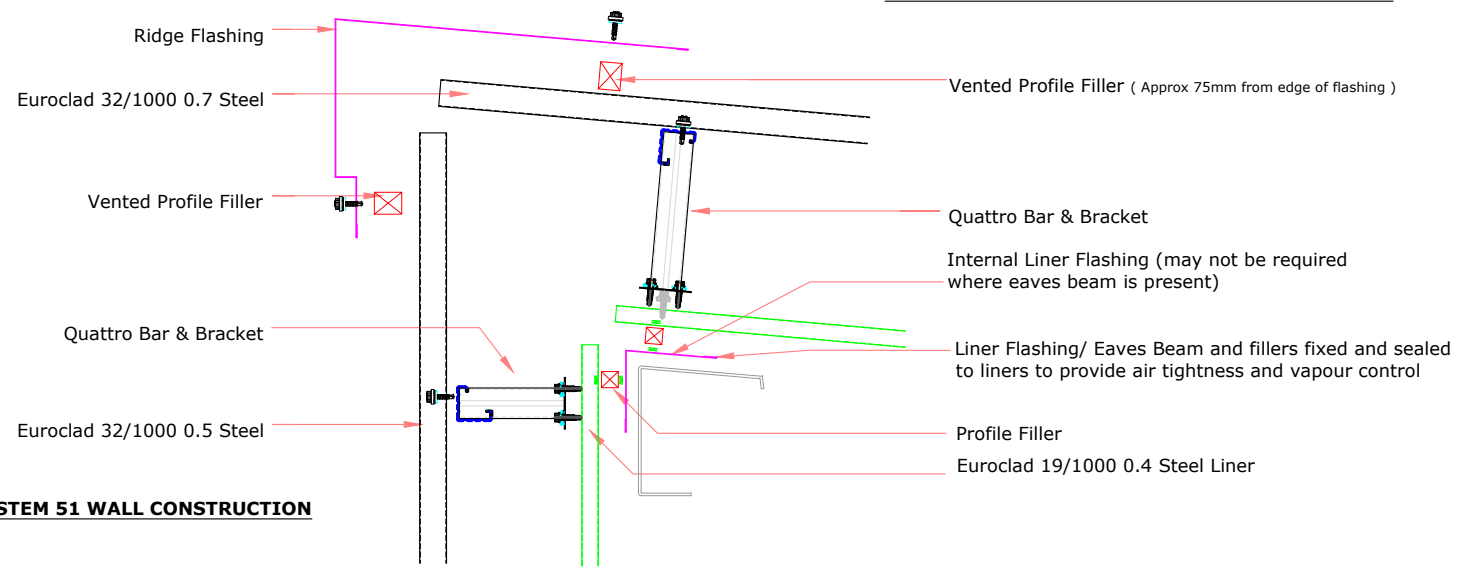
TITLE: Elite System 1
 DWG NO: E1
 DRAWN: MP
 CHECK: PCL
 DATE: Jan 18
 SCALE: NTS

This draft drawing has been supplied by Euro Clad Ltd for the purpose of guidance free of charge. It is a suggested typical detail and as such should not be assumed suitable for any specific project or application. No responsibility is assumed for errors or misinterpretations resulting from the information contained in the drawing. Details are for illustration only and no liability is accepted. We reserve the right to change the details without notice. The drawing is copyright, it remains our property.

See drawing numbers FR18 and FR15 for non-fragile fixing requirements

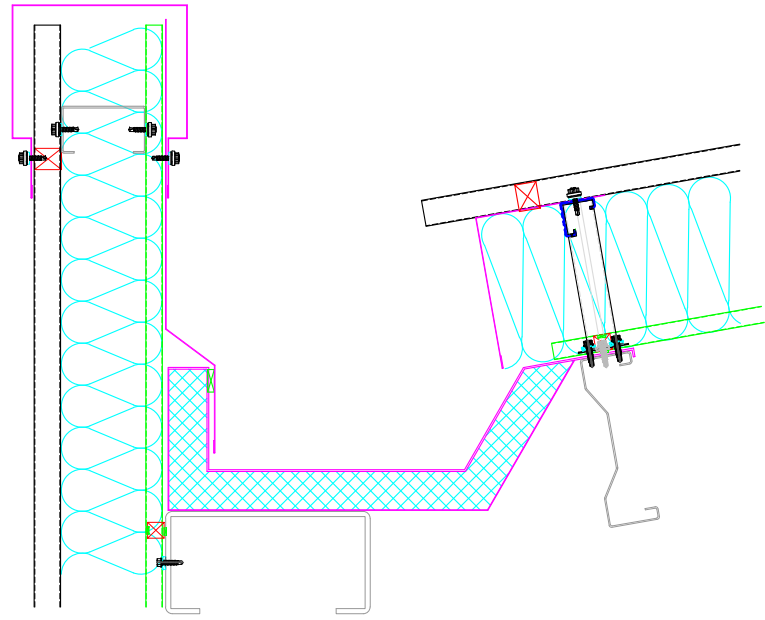
To be read in conjunction with Elite System specification documents

EUROCLAD ELITE SYSTEM 1 ROOF CONSTRUCTION



EUROCLAD ELITE SYSTEM 51 WALL CONSTRUCTION

Insulation excluded for clarity
 A range of mineral & glass wool insulations are available for different requirements



ELITE SYSTEMS



www.euroclad.com
 Tel: +44 (0)2922 010 101
 Fax: +44 (0)2922 010 122

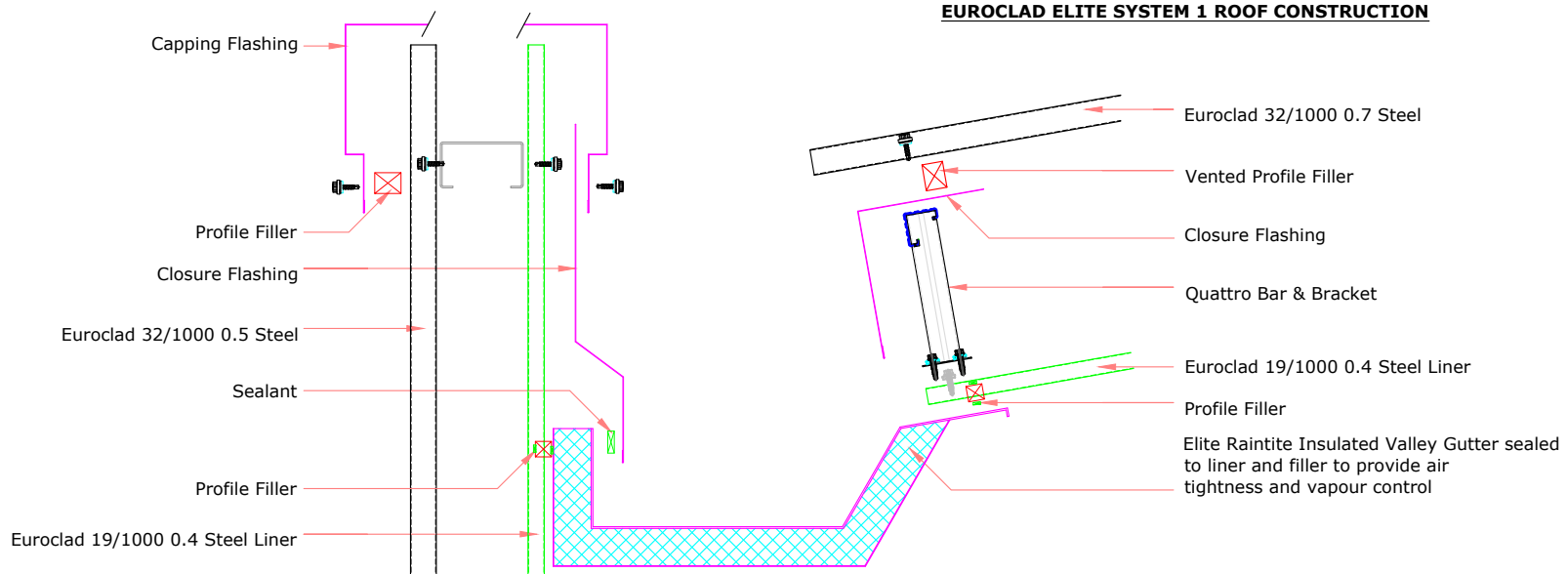
TITLE: Elite System 1
 DWG NO: E1
 DRAWN: MP
 CHECK: PCL
 DATE: Jan 18
 SCALE: NTS

This draft drawing has been supplied by Euro Clad Ltd for the purpose of guidance free of charge. It is a suggested typical detail and as such should not be assumed suitable for any specific project or application. No responsibility is assumed for errors or misinterpretations resulting from the information contained in the drawing. Details are for illustration only and no liability is accepted. We reserve the right to change the details without notice. The drawing is copyright, it remains our property.

See drawing numbers FR18 and FR15 for non-fragile fixing requirements

To be read in conjunction with Elite System specification documents

EUROCLAD ELITE SYSTEM 1 ROOF CONSTRUCTION



Insulation excluded for clarity
 A range of mineral & glass wool insulations are available for different requirements

ELITE SYSTEMS



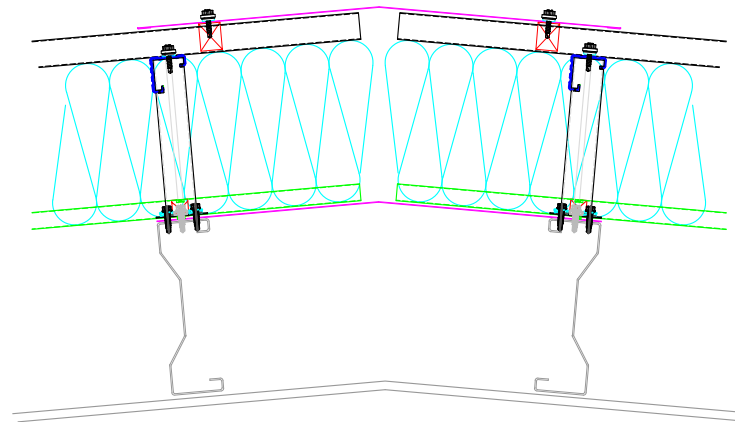
www.euroclad.com
 Tel: +44 (0)2922 010 101
 Fax: +44 (0)2922 010 122

TITLE: Elite System 1
 DWG NO: E1
 DRAWN: MP
 CHECK: PCL
 DATE: Jan 18
 SCALE: NTS

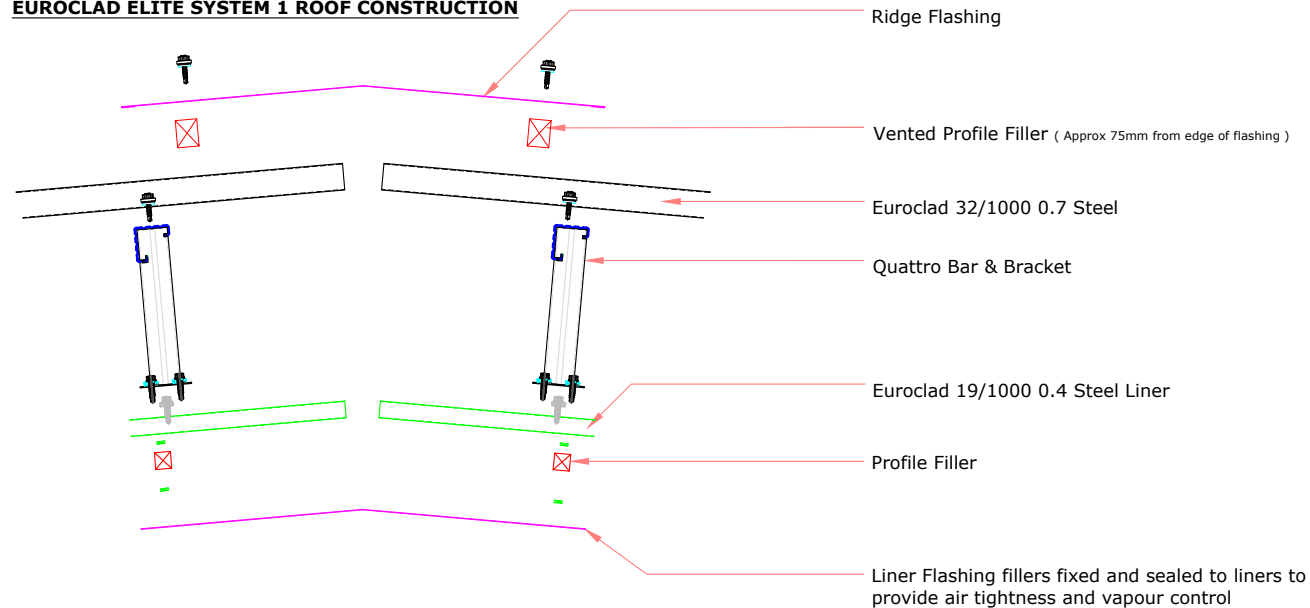
This draft drawing has been supplied by Euro Clad Ltd for the purpose of guidance free of charge. It is a suggested typical detail and as such should not be assumed suitable for any specific project or application. No responsibility is assumed for errors or misinterpretations resulting from the information contained in the drawing. Details are for illustration only and no liability is accepted. We reserve the right to change the details without notice. The drawing is copyright, it remains our property.

See drawing numbers FR18 and FR15 for non-fragile fixing requirements

To be read in conjunction with Elite System specification documents



EUROCLAD ELITE SYSTEM 1 ROOF CONSTRUCTION



Insulation excluded for clarity
 A range of mineral & glass wool insulations are available for different requirements

ELITE SYSTEMS

EUROCLAD

www.euroclad.com
Tel: +44 (0)2922 010 101
Fax: +44 (0)2922 010 122

TITLE: Elite System 1

DWG NO: E1

DRAWN: MP

CHECK: PCL

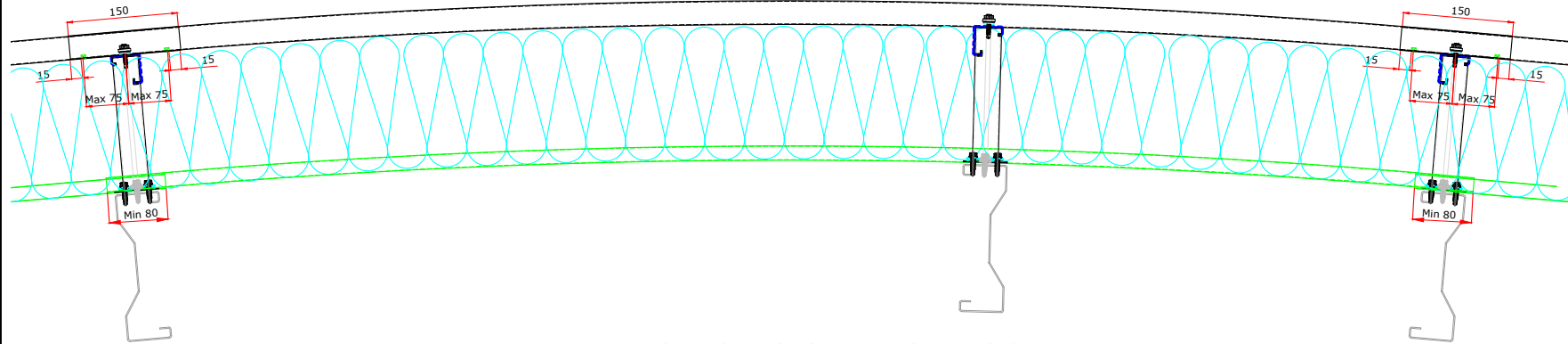
DATE: Jan 18

SCALE: NTS

This draft drawing has been supplied by Euro Clad Ltd for the purpose of guidance free of charge. It is a suggested typical detail and as such should not be assumed suitable for any specific project or application. No responsibility is assumed for errors or misinterpretations resulting from the information contained in the drawing. Details are for illustration only and no liability is accepted. We reserve the right to change the details without notice. The drawing is copyright, it remains our property.

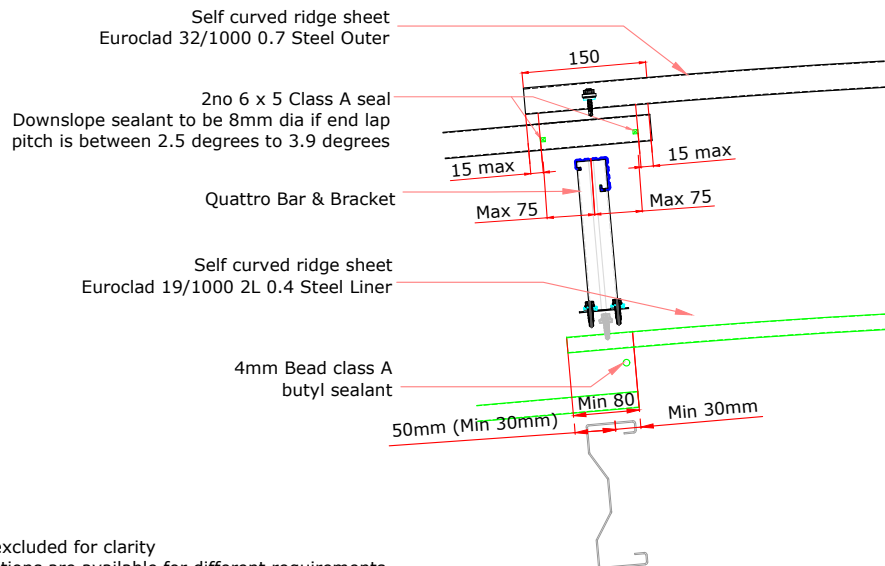
See drawing numbers FR18 and FR15 for non-fragile fixing requirements

To be read in conjunction with Elite System specification documents



NOTE: For curved roofs the steelwork must provide for finished minimum pitch after settlement and deflections of $\geq 2.5^\circ$ at purlins which are to receive external crown sheet end laps. Purlins at these locations should be considered critical and the use of a wider top flange may be considered. A purlin is recommended to be positioned at or close to the apex point of the curve to ensure drainage.

EUROCLAD ELITE SYSTEM 1 ROOF CONSTRUCTION



Insulation excluded for clarity

A range of mineral & glass wool insulations are available for different requirements

ELITE SYSTEMS



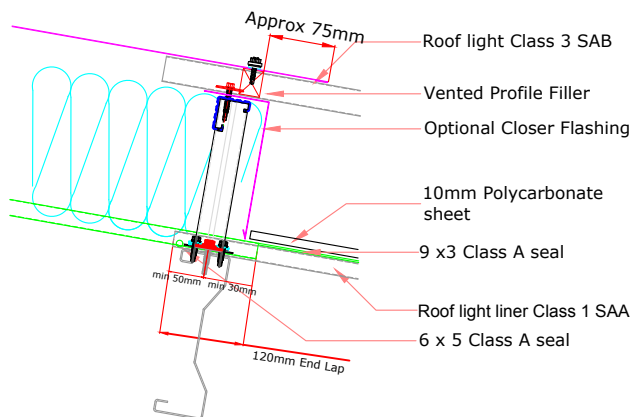
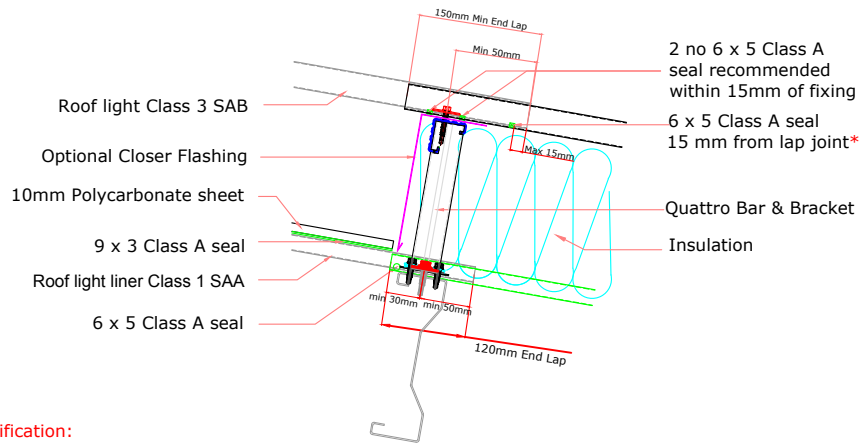
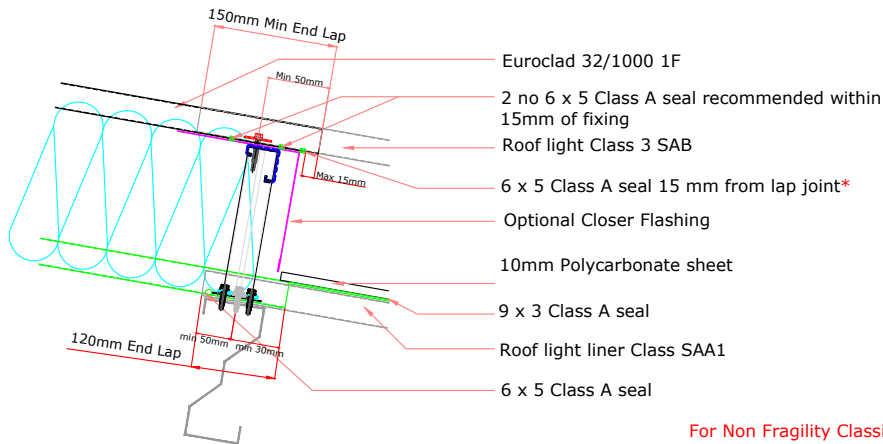
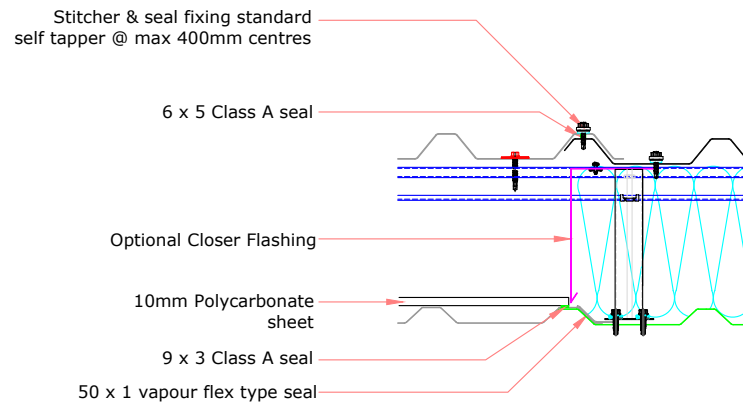
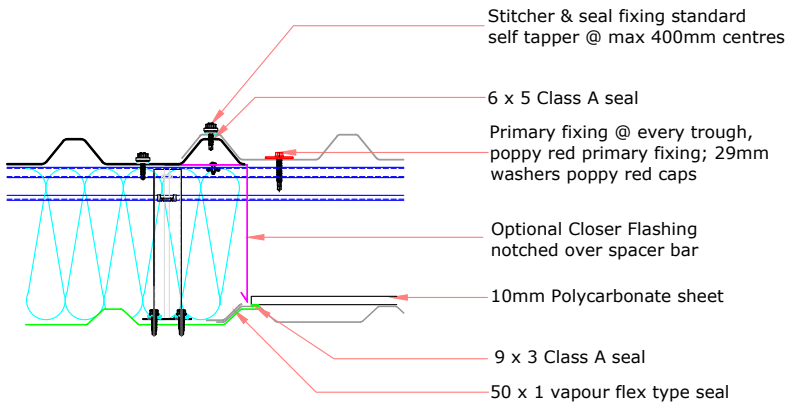
www.euroclad.com
Tel: +44 (0)2922 010 101
Fax: +44 (0)2922 010 122

TITLE: Elite System 1
DWG NO: E1
DRAWN: MP
CHECK: PCL
DATE: Jan 18
SCALE: NTS

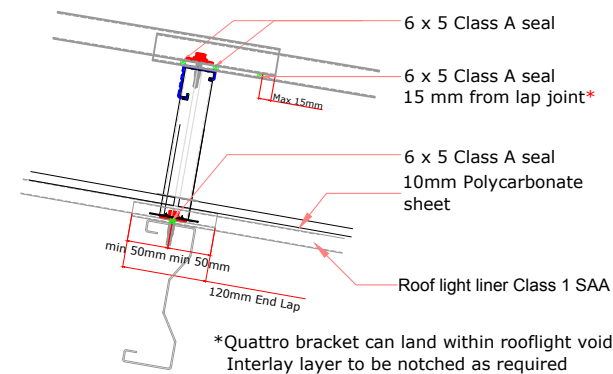
This draft drawing has been supplied by Euro Clad Ltd for the purpose of guidance free of charge. It is a suggested typical detail and as such should not be assumed suitable for any specific project or application. No responsibility is assumed for errors or misinterpretations resulting from the information contained in the drawing. Details are for illustration only and no liability is accepted. We reserve the right to change the details without notice. The drawing is copyright, it remains our property.

See drawing numbers FR18 and FR15 for non-fragile fixing requirements

To be read in conjunction with Elite System specification documents



For Non Fragility Classification:
Minimum GRP sheet edge distance to fixing is 50mm
Minimum steel sheet edge distance to fixing is 30mm
Class A butyl external sheet endlap sealant lower run:
Standard: $\geq 4^\circ$ finished pitch 6x5mm
Curved roof crown sheet end laps
2.5°-3.9° finished pitch - 8mm dia



*Quattro bracket can land within rooflight void
Interlay layer to be notched as required

ELITE SYSTEMS

EUROCLAD

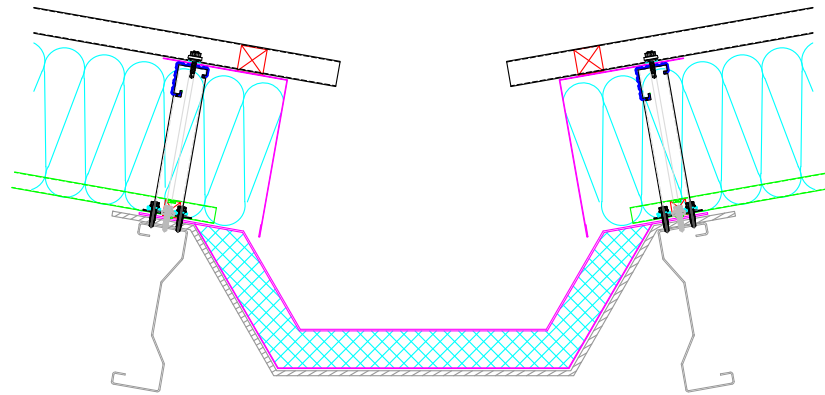
www.euroclad.com
 Tel: +44 (0)2922 010 101
 Fax: +44 (0)2922 010 122

TITLE: Elite System 1
 DWG NO: E1
 DRAWN: MP
 CHECK: PCL
 DATE: Jan 18
 SCALE: NTS

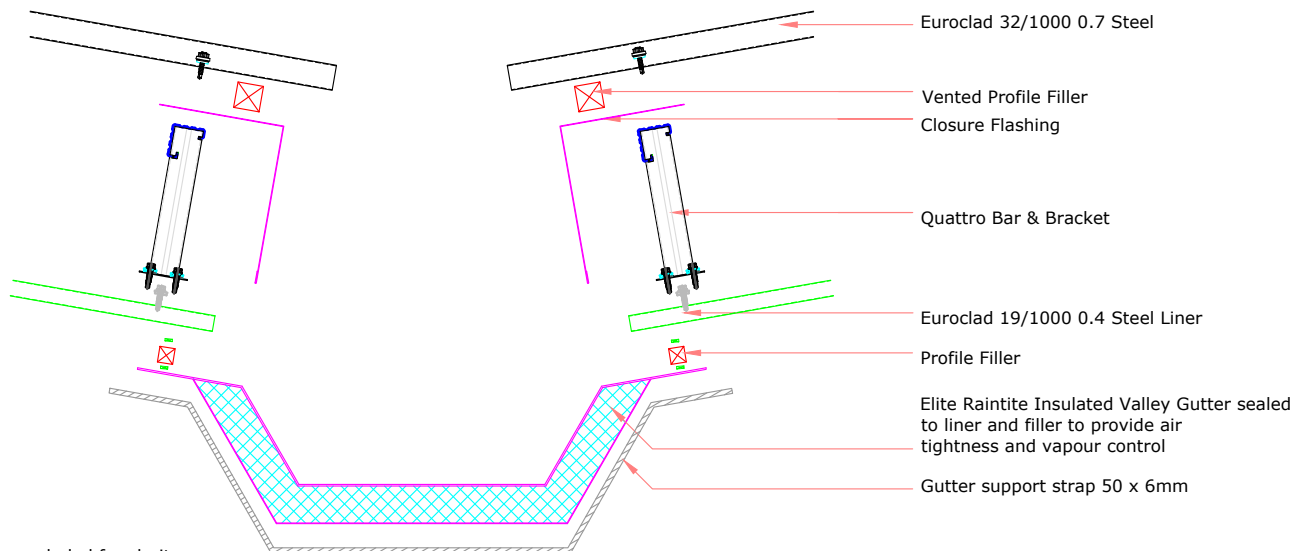
This draft drawing has been supplied by Euro Clad Ltd for the purpose of guidance free of charge. It is a suggested typical detail and as such should not be assumed suitable for any specific project or application. No responsibility is assumed for errors or misinterpretations resulting from the information contained in the drawing. Details are for illustration only and no liability is accepted. We reserve the right to change the details without notice. The drawing is copyright, it remains our property.

See drawing numbers FR18 and FR15 for non-fragile fixing requirements

To be read in conjunction with Elite System specification documents



EUROCLAD ELITE SYSTEM 1 ROOF CONSTRUCTION



Insulation excluded for clarity
 A range of mineral & glass wool insulations are available for different requirements